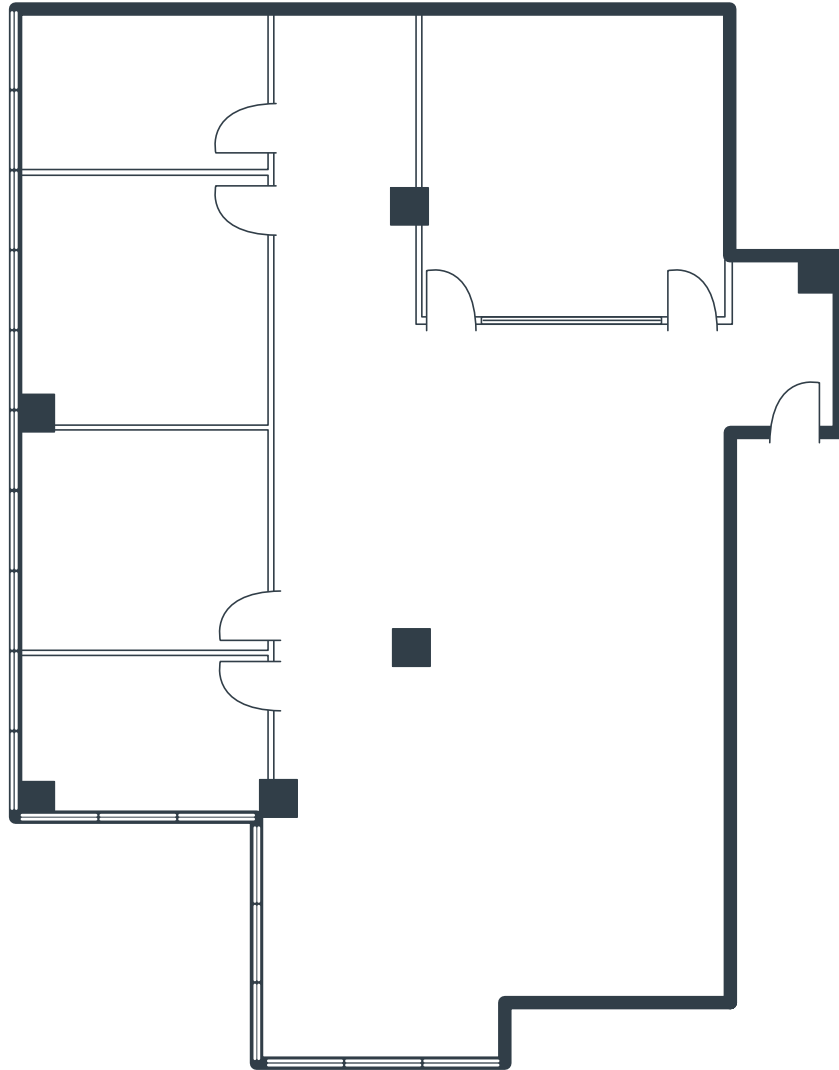


4100 NEWPORT PLACE

4100 Newport Place Drive, Suite 720
Newport Beach, CA

3,354 Square Feet

Call for Pricing
Full Service Gross



NOTES

- Reception
- 4 Window Offices
- Conference Room
- Kitchen
- Large Open Work Area
- Part of a Professionally Managed Business Park

Created by Olen Commercial Realty Corp., 2022.
Information is not to be published or copied without
written approval. Square footage and floor plans are
estimates and should be separately verified. All rates,
terms, floor plans, and building facts are subject to
change without notice.

ea 07.17.2024

LAURA PRESTON-FAYERMAN

Senior Leasing Director

949.719.7205

lfayerman@olen.com



Seven Corporate Plaza

Newport Beach, CA

949.644.6536

www.olen.com