

Arena District Office Space 425 West Nationwide Blvd.

Leasing Opportunity

ARENA
·DISTRICT·
DOWNTOWN COLUMBUS



The Arena District is one of the country's premier office, sports, dining and entertainment destinations, with 2.1 million square feet of commercial space, 300,000 square feet of retail, restaurant and entertainment venues, and more than 1,200 residences.

Nationwide Arena, Huntington Park, Lower.com Field, KEMBA Live!, the Greater Columbus Convention Center, multiple hotels, an athletic club, bars and restaurants, community events and festivals attract 6.3 million visitors annually. Home to many of Columbus' most prominent businesses, the vast amenities of the Arena District continue to attract the city's top talent.



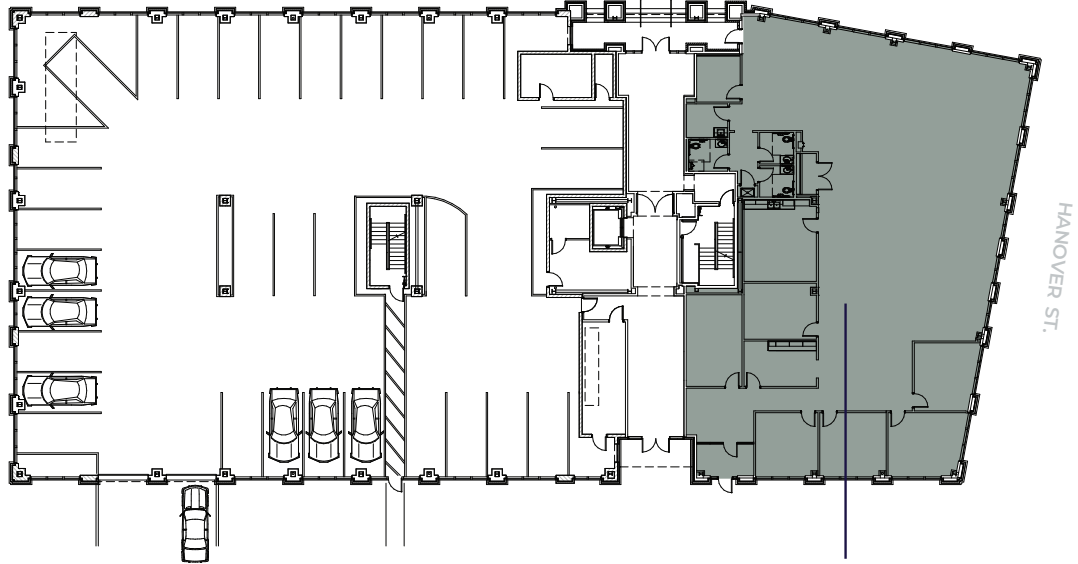
Space Highlights:

- +/-6,600 RSF
- Turn-key opportunity
- Ample parking in the adjacent surface lot
- Direct access to the suite from the exterior of the building
- Steps to Lower.com, Huntington Park, Nationwide Arena, and KEMBA Live!

www.arenadistrict.com



W. NATIONWIDE BLVD.



AVAILABLE
SUITE 100
±6,600 RSF



Owned and Developed by
Nationwide Realty Investors

375 North Front Street, Suite 200
Columbus, Ohio 43215
nationwiderealtyinvestors.com

Chris Thompson:
thompscj@nationwide.com
(614) 857-2330

FOR LEASING OPPORTUNITIES, CONTACT:

NEWMARK

150 East Broad Street | Columbus, OH 43215
(614) 883-1200 | nmrk.com

OFFICE LEASING:

Wayne Harer: wayne.harer@nmrk.com
Ken Isenbarger: kenneth.isenbarger@nmrk.com