

284-286 Meridian Dr.

GENERAL NOTES

1. ALL WORK SHALL BE IN ACCORDANCE WITH THE LATEST EDITIONS OF THE IBC AND ALL APPLICABLE LOCAL, STATE AND FEDERAL CODES.
2. ALL WORK SHALL BE IN ACCORDANCE WITH THE LATEST EDITIONS OF THE IBC AND ALL APPLICABLE LOCAL, STATE AND FEDERAL CODES.
3. ALL WORK SHALL BE IN ACCORDANCE WITH THE LATEST EDITIONS OF THE IBC AND ALL APPLICABLE LOCAL, STATE AND FEDERAL CODES.



RESIDENTIAL DESIGN SOLUTIONS
SERVING THE COMMUNITY

REVISIONS

NO.	DATE	DESCRIPTION
1	10/20/2023	CONTRACT DOCUMENTS
2		
3		
4		

GENERAL NOTES

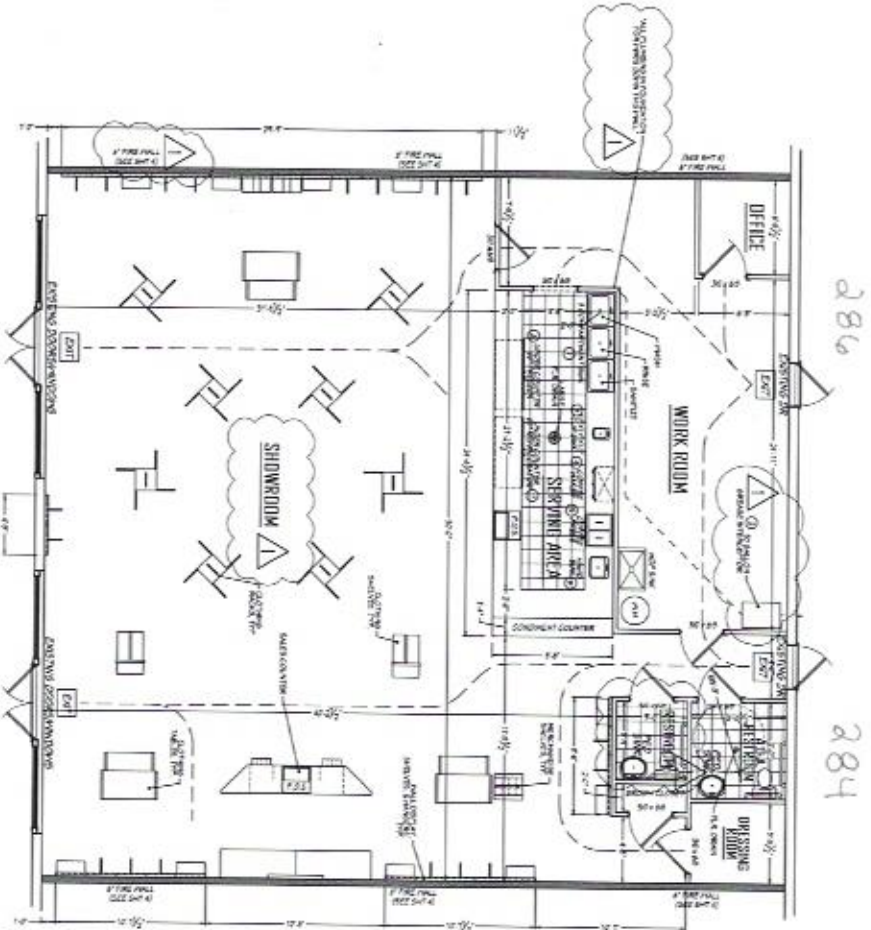
1. ALL WORK SHALL BE IN ACCORDANCE WITH THE LATEST EDITIONS OF THE IBC AND ALL APPLICABLE LOCAL, STATE AND FEDERAL CODES.

2. ALL WORK SHALL BE IN ACCORDANCE WITH THE LATEST EDITIONS OF THE IBC AND ALL APPLICABLE LOCAL, STATE AND FEDERAL CODES.

3. ALL WORK SHALL BE IN ACCORDANCE WITH THE LATEST EDITIONS OF THE IBC AND ALL APPLICABLE LOCAL, STATE AND FEDERAL CODES.

NINELINE APPAREL INTERIOR BUILD-OUT

CLIENT NAME: NINE LINE APPAREL
PROJECT LOCATION: 284-286 MERIDIAN DRIVE, BIRMINGHAM, AL 35203
DATE: 10/20/2023



FLOOR PLAN

EXTERIOR WALLS TO BE CONSTRUCTED PER LOCAL CODES AND REGULATIONS.

GREASE TRAP DETAIL



DATA ON DIMENSIONS & SPECIFICATIONS

Product Number	QTY	UNIT	QTY	UNIT	QTY	UNIT	QTY	UNIT	QTY	UNIT
Grease Trap (30 Gal)	1	EA	1	EA	1	EA	1	EA	1	EA
Approximate Dimensions (inches)	18	IN	24	IN	24	IN	24	IN	24	IN
Approximate Weight (lbs)	15	LB	15	LB	15	LB	15	LB	15	LB
Material of Construction	304	SS	304	SS	304	SS	304	SS	304	SS
Finish	Brushed	SS	Brushed	SS	Brushed	SS	Brushed	SS	Brushed	SS
Notes	1. Grease trap to be installed in accordance with local codes and regulations.									

EQUIPMENT SCHEDULE

NO.	DESCRIPTION	MANUFACTURER	MODEL NO.	QTY	UNIT	REMARKS
1	Grease Trap (30 Gal)	Grease Trap	GT-30	1	EA	See Detail
2
3
4
5
6
7
8
9
10

CONTRACTOR'S CLAUSE

BY SIGNING THIS CONTRACT, THE CONTRACTOR AGREES TO HOLD THE ARCHITECT HARMLESS FROM ALL LIABILITY, INCLUDING REASONABLE ATTORNEY'S FEES, IN CONNECTION WITH THIS PROJECT.