


1, FIRST FLOOR PLAN
1/8" = 1'-0"

COPY RIGHT © 2011 BY MODE ARCHITECTS, P.C. THIS DRAWING, AS AN INSTRUMENT OF PROFESSIONAL SERVICE, IS AND SHALL REMAIN THE PROPERTY OF MODE ARCHITECTS, P.C. NO PART OF THIS DRAWING MAY BE PRODUCED, STORED IN A RETRIEVAL SYSTEM OR TRANSMITTED IN ANY FORM WITHOUT THE PRIOR WRITTEN APPROVAL OF MODE ARCHITECTS, P.C.

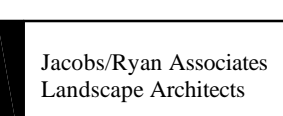
ARCHITECT OF RECORD
MoDE architects, p.c.
 363 W. Erie St.
 Suite 400 West
 CHICAGO, IL 60610
 T.312.475.9918 F.847.655.2741
 Design Firm Registration No.: 184.004451

MEP ENGINEER

 MECHANICAL • ELECTRICAL
 PLUMBING • FIRE PROTECTION
 COMMUNICATION TECHNOLOGY
 831 W. JACKSON BLVD. SUITE 400
 CHICAGO, ILLINOIS 60607-3015
 TELEPHONE (312) 594-5125
 FACSIMILE (312) 594-5127
 WWW.D&EARCHITECTS.COM

STRUCTURAL ENGINEER
MATRIX
 33 W. Jackson Blvd. 4th floor
 Chicago Illinois 60604-3901
 v 312.427.1200
 f 312.427.4220
 Matrix Engineering Corporation
 Structural Engineers

CIVIL ENGINEER

 230 W. Monroe Street Suite 370
 Chicago, IL 60606
 Phone: 312.397.2220 Fax: 312.397.2225

LANDSCAPE ARCHITECT

 Landscape Architects
 1527 N. Sandburg Terrace Chicago, IL 60610 (312) 664-3217

PROJECT INFORMATION

ASPIRA
 OF ILLINOIS
 ASPIRA BUSINESS
 AND FINANCE
 HIGH SCHOOL
 NEW CONSTRUCTION
 2989 NORTH
 MILWAUKEE AVENUE
 CHICAGO, IL 60618

REVISION		
NO.	DATE	ISSUE

ISSUED DATE: 01/09/12
 ISSUED FOR: PERMIT
 DRAWN BY:
 CHECK BY:
 PROJECT #:


SHEET TITLE
**FIRST FLOOR
 PLAN**

SHEET NUMBER

A1.1

COPY RIGHT © 2011 BY MODE ARCHITECTS, P.C. THIS DRAWING, AS AN INSTRUMENT OF PROFESSIONAL SERVICE, IS AND SHALL REMAIN THE PROPERTY OF MODE ARCHITECTS, P.C. NO PART OF THIS DRAWING MAY BE PRODUCED, STORED IN A RETRIEVAL SYSTEM OR TRANSMITTED IN ANY FORM WITHOUT THE PRIOR WRITTEN APPROVAL OF MODE ARCHITECTS, P.C.


ARCHITECT OF RECORD
MoDE architects, p.c.
 363 W. Erie St.
 Suite 400 West
 CHICAGO, IL 60610
 T. 312.475.9918 F. 847.655.2741
 Design Firm Registration No.:
 184.004451

MEP ENGINEER

 MECHANICAL & ELECTRICAL
 PLUMBING & FIRE PROTECTION
 COMMUNICATION TECHNOLOGY
 813 W. JACKSON BLVD. SUITE 400
 CHICAGO, ILLINOIS 60607-3015
 TELEPHONE (312) 596-5323
 FACSIMILE (312) 594-5327
 WWW.D&DENGINEERING.COM

STRUCTURAL ENGINEER
MATRIX
 Matrix Engineering Corporation
 Structural Engineers
 333 W. Jackson Blvd. 4th Floor
 Chicago Illinois 60604-3901
 v 312.427.1200
 f 312.427.4229

CIVIL ENGINEER

 230 W. Monroe Street Suite 370
 Chicago, IL 60606
 Phone: 312.397.2220 Fax: 312.397.2225

LANDSCAPE ENGINEER

 1527 N. Sandburg Terrace Chicago, IL 60610 (312) 664-3217

PROJECT INFORMATION

ASPIRA
 OF ILLINOIS

ASPIRA BUSINESS
 AND FINANCE
 HIGH SCHOOL

NEW CONSTRUCTION

2989 NORTH
 MILWAUKEE AVENUE
 CHICAGO, IL 60618

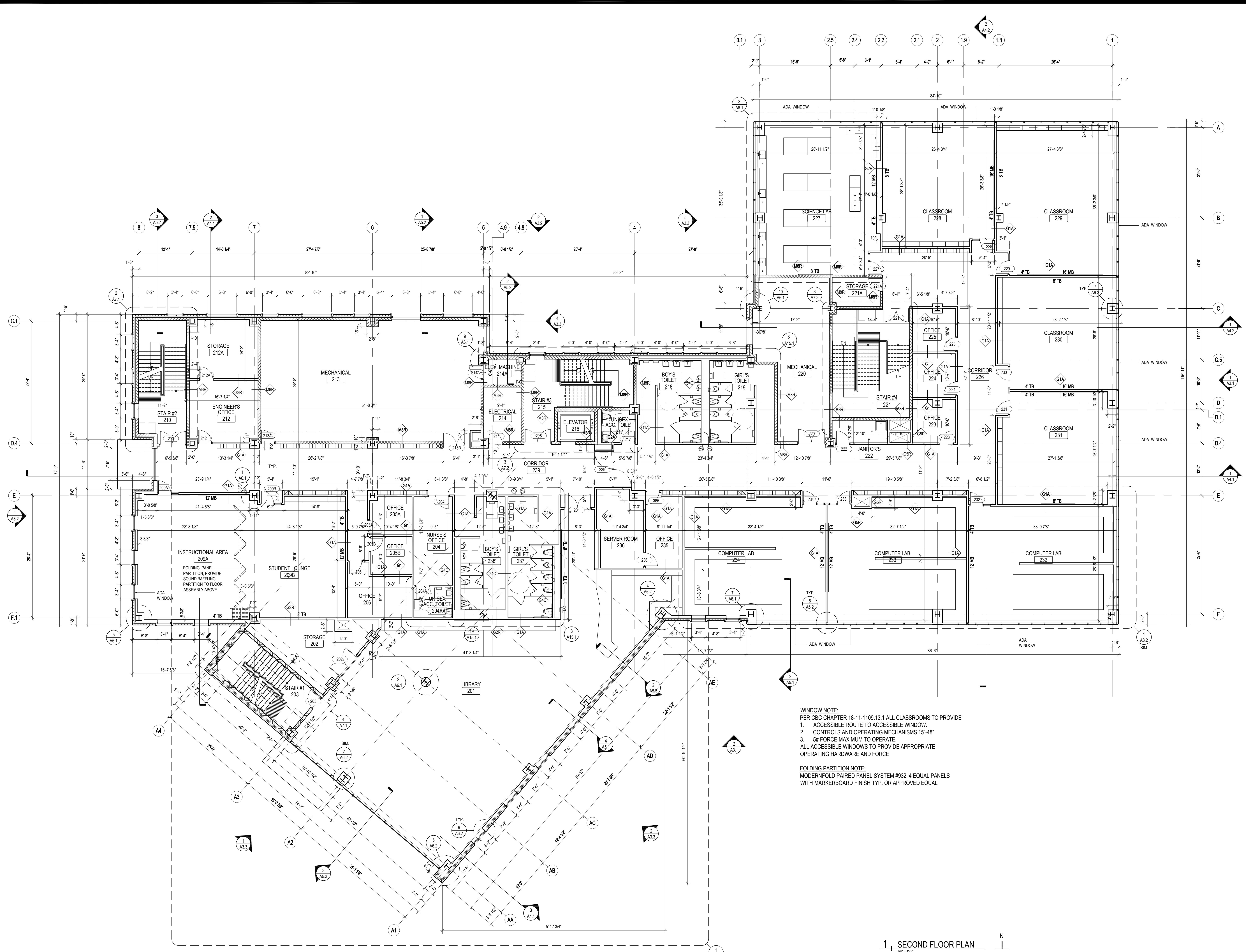
REVISION	NO.	DATE	ISSUE

ISSUED DATE: 01/09/12
 ISSUED FOR: PERMIT
 DRAWN BY:
 CHECK BY:
 PROJECT #:
 SHEET TITLE

**SECOND
 FLOOR PLAN**

SHEET NUMBER

A1.2



WINDOW NOTE:
 PER CBC CHAPTER 18-11-1109 13.1 ALL CLASSROOMS TO PROVIDE
 1. ACCESSIBLE ROUTE TO ACCESSIBLE WINDOW.
 2. CONTROLS AND OPERATING MECHANISMS 15"-48".
 3. 5# FORCE MAXIMUM TO OPERATE.
 ALL ACCESSIBLE WINDOWS TO PROVIDE APPROPRIATE
 OPERATING HARDWARE AND FORCE

FOLDING PARTITION NOTE:
 MODERNFOLD PAIRED PANEL SYSTEM #932, 4 EQUAL PANELS
 WITH MARKERBOARD FINISH TYP. OR APPROVED EQUAL

1 SECOND FLOOR PLAN
 1/8" = 1'-0"

COPY RIGHT © 2011 BY MODE ARCHITECTS, P.C. THIS DRAWING, AS AN INSTRUMENT OF PROFESSIONAL SERVICE, IS AND SHALL REMAIN THE PROPERTY OF MODE ARCHITECTS, P.C. NO PART OF THIS DRAWING MAY BE PRODUCED, STORED IN A RETRIEVAL SYSTEM OR TRANSMITTED IN ANY FORM WITHOUT THE PRIOR WRITTEN APPROVAL OF MODE ARCHITECTS, P.C.

ARCHITECT OF RECORD
MoDE architects, p.c.

363 W. Erie St.
 Suite 400 West
 CHICAGO, IL 60610
 T. 312.475.9918 F. 847.655.2741

Design Firm Registration No.:
 184.004451

MEP ENGINEER

d&dengineering
 MECHANICAL & ELECTRICAL
 PLUMBING & FIRE PROTECTION
 COMMUNICATION TECHNOLOGY
 833 W. JACKSON BLVD., SUITE 400
 CHICAGO, ILLINOIS 60607-3015
 TELEPHONE (312) 594-5123
 FACSIMILE (312) 594-5127
 WWW.D&DENGINEERING.COM

STRUCTURAL ENGINEER

MATRIX
 33 W. Jackson Blvd. 4th floor
 Chicago Illinois 60604-9801
 v 312.427.1200
 f 312.427.4220

CIVIL ENGINEER

CivCon
 Services, Inc.
 230 W. Monroe Street Suite 370
 Chicago, IL 60606
 Phone: 312.397.2220 Fax: 312.397.2225

LANDSCAPE ENGINEER

Jacobs/Ryan Associates
 Landscape Architects
 1527 N. Sandburg Terrace Chicago, IL 60610 (312) 664-3217

PROJECT INFORMATION

ASPIRA
 OF ILLINOIS

ASPIRA BUSINESS
 AND FINANCE
 HIGH SCHOOL

NEW CONSTRUCTION

2989 NORTH
 MILWAUKEE AVENUE
 CHICAGO, IL 60618

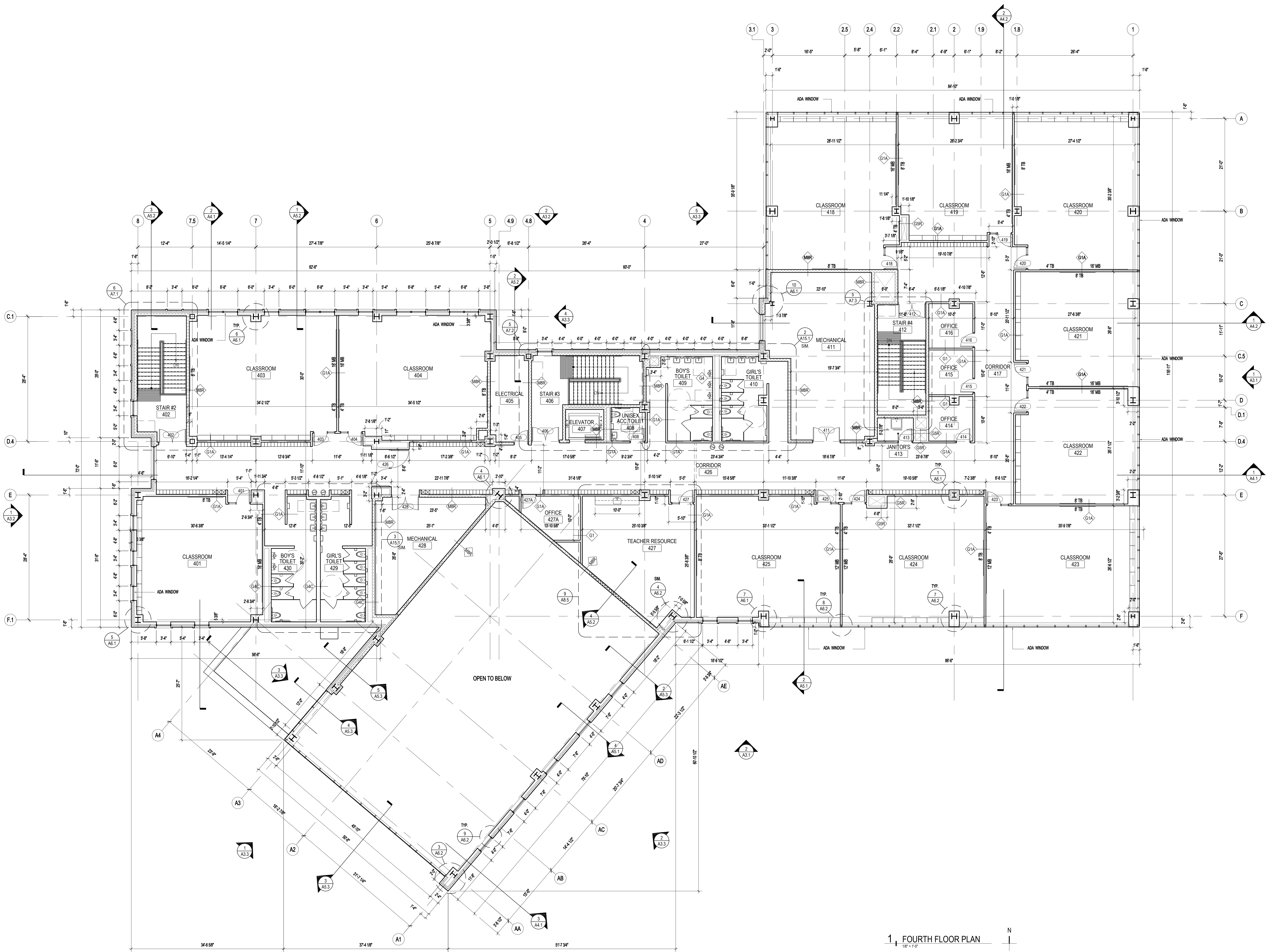
REVISION	NO.	DATE	ISSUE

ISSUED DATE: 01/09/12
 ISSUED FOR: PERMIT
 DRAWN BY:
 CHECK BY:
 PROJECT #:
 SHEET TITLE

FOURTH FLOOR PLAN

SHEET NUMBER

A1.4



1 FOURTH FLOOR PLAN
 1/8" = 1'-0"