

Industrial
Land

1.91-Acre Industrial Land in Alachua

NW 129th Way & Nano Court | Alachua, FL 32615

FOR SALE OR FOR LEASE

Total Available: 1.91 Acres
Asking Price: \$595,000.00, All offers considered
Lease Rate & Type: \$5,500.00 per month, Gross

For More Information

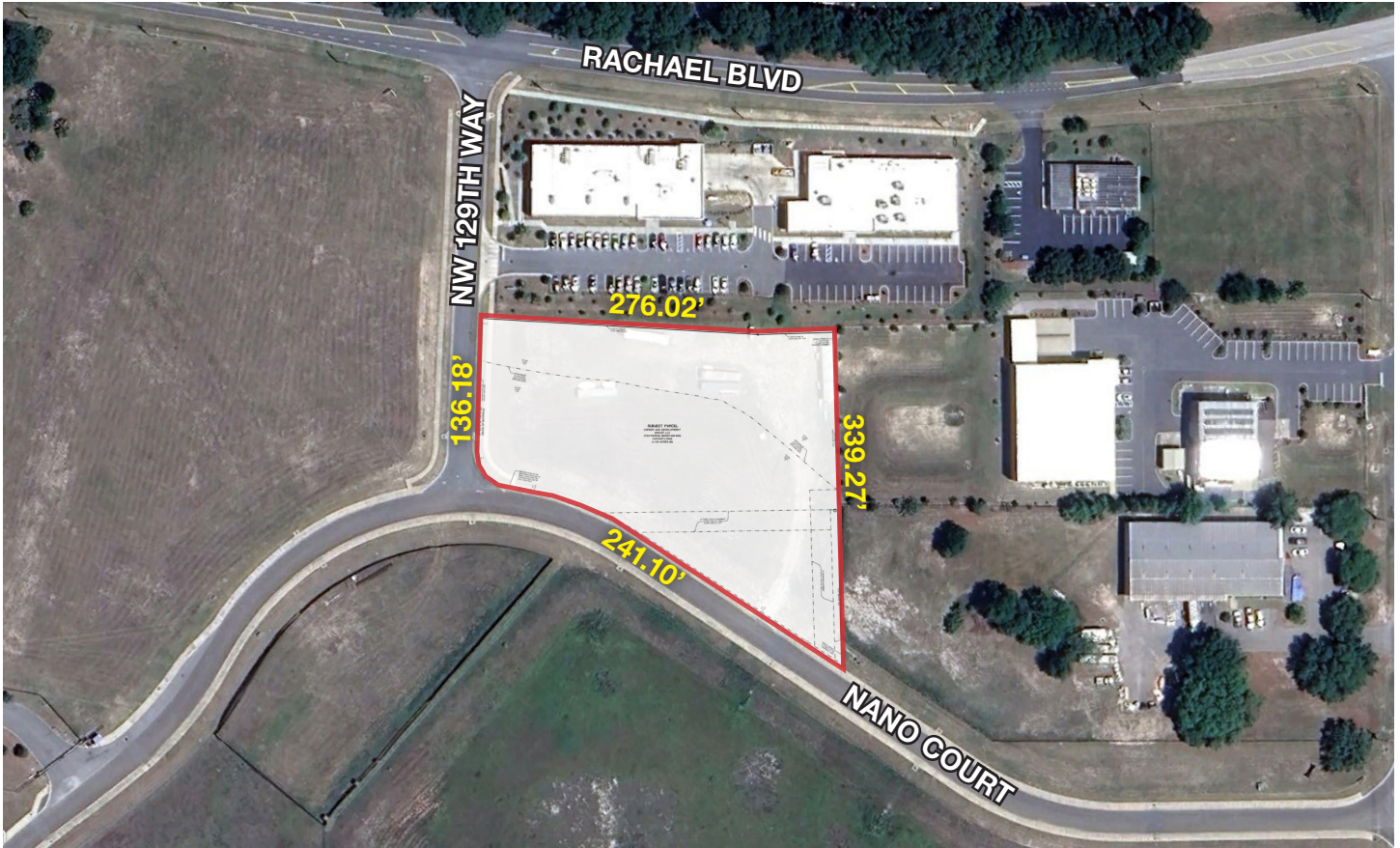
Richard Sincore
+1 954 826 3636
rsincore@naimiami.com

For more listings visit: naimia-ftl.com/properties

NAI Miami
Fort Lauderdale

1.91-Acre Industrial Land in Alachua

NW 129th Way & Nano Court | Alachua, FL 32615



Property Features

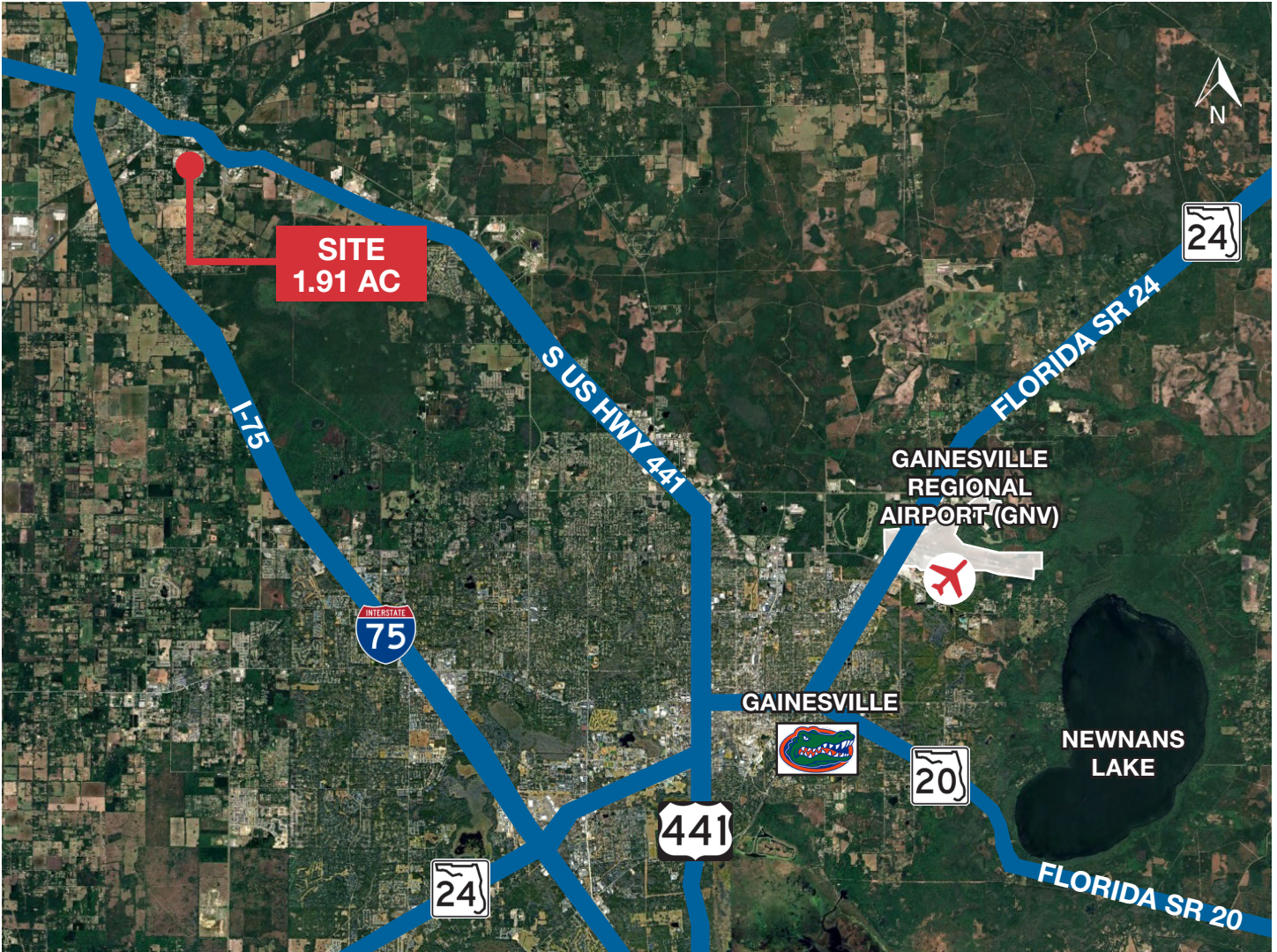
- Folio number: 03927-000-000
- Total Available: 1.91 Acres
- Asking Price: \$595,000.00
- Lease Rate & Type: \$5,500.00 per month, Gross
- Excellent location for warehouses and/or outside storage
- Located in a rapidly growing industrial market
- Zoning 1000 ILW
- Close proximity to I-75 and easy access to S US Highway 441
- Located on a corner allowing for two Entry/Exit points
- Property situated on highest ground in Copeland Park
- Property is free of any easements and free of any environmental issues

Permitted Uses

- Building, heating, plumbing, or electrical contractors
- Heavy equipment sales, rental, or repair
- Truck or freight terminal
- Storage warehouse
- Manufacturing, light
- [Full list of permitted uses](#)

1.91-Acre Industrial Land in Alachua

NW 129th Way & Nano Court | Alachua, FL 32615



Demographic Summary



RADIUS

	1 Mile	3 Miles	5 Miles
Population	2,258	14,605	91,828
Households	867	5,889	37,982
Average Household Income	\$82,527	\$105,612	\$125,083
Employees	2,011	7,091	40,573



GAINESVILLE REGIONAL AIRPORT (GNV)
± 16.5 Miles



GAINESVILLE
± 15 Miles

