

# FOR SALE

7 E Main Street  
Mount Kisco, NY 10549



HOULIHAN LAWRENCE  
COMMERCIAL



KARATE  
2nd Floor

7  
E MAIN STREET

## EXECUTIVE SUMMARY



HOULIHAN LAWRENCE  
COMMERCIAL

**ASKING: \$2,400,000**

**TOTAL SF: 7,486**

Rare chance to own a three-story, 7,486 SF retail building in the heart of Mount Kisco's bustling shopping district. Longtime retail location with a strong customer base – directly across from the Metro-North Harlem Line station with excellent visibility and traffic (over 15,000 cars daily). This is an exceptional opportunity for investors or owner-users looking for a prime retail/commercial asset in one of Westchester's most active shopping hubs.

Zoned CB-1 allows for a diverse range of businesses such as retail, restaurants, offices, banks, fitness centers, personal services, and even residential units above stores. This zoning designation promotes mixed-use development and vibrant commercial areas.

This location offers convenience with direct access to Metro-North train station, high visibility with 15,247 cars passing by daily, and a prime spot surrounded by national and local retailers. Property is next to the largest commuter lot in town and parking is free for the weekend.

Owner willing to consider financing.  
Residential concept plans available.



HOULIHAN LAWRENCE  
COMMERCIAL

**7 E Main Street**

Mount Kisco, NY 10549



**Prime Retail / Commercial  
Opportunity**

7

E MAIN STREET



## PROPERTY FEATURES

<b>Location</b>	<b>7 East Main Street, Mount Kisco, NY</b>
<b>Sale Price</b>	\$2,400,000
<b>Taxes</b>	\$44,747
<b>Zoning</b>	CB-1
<b>Building Type</b>	Retail
<b>Building Height</b>	3 Stories
<b>Gross Building Area</b>	7,486 SF
<b>2 Levels of Shop / Storage</b>	3,582 SF
<b>2 Levels of Retail</b>	3,904 SF
<b>Upgrades &amp; Features:</b>	
	Solar Panels (installed 2018, 16,000 kWh)
	Updated storefront with automatic door
	New windows, siding, insulation (2015)
	Central fire alarm system
	2 bathrooms: 1 w/ shower, 1 w/ 1/2 bath
<b>Freight Elevator</b>	1
<b>Utilities</b>	Municipal water/sewer, gas, 200AMP electric, forced hot air + 3 A/C units



HOULIHAN LAWRENCE  
COMMERCIAL

7

E MAIN STREET

7 E Main St.

## LOCATION FEATURES

7 E Main Street, Mount Kisco, NY 10549

**In downtown Mount Kisco**

**Brief ride to Grand Central in Manhattan**

1 hr ride

**Walking distance to commuter rail**

**Convenient to Airports**

Westchester County

12.7mi/19 min drive

New York Stewart International

41.1mi/70 min drive

**Easy Access to Parkways & Interstate Highways**

**Walk Score®**

Very Walkable (81)

**Traffic Count**

15,000 cars daily

**Next to largest commuter lot on North Moger**



HOULIHAN LAWRENCE  
COMMERCIAL

7

E MAIN STREET

## EXTERIOR



HOULIHAN LAWRENCE  
COMMERCIAL



7

E MAIN STREET

INTERIOR



HOULIHAN LAWRENCE  
COMMERCIAL



7  
E MAIN STREET

INTERIOR



HOULIHAN LAWRENCE  
COMMERCIAL



7

E MAIN STREET

## ADDITIONAL PHOTOS



HOULIHAN LAWRENCE  
COMMERCIAL



7

E MAIN STREET

## ADDITIONAL PHOTOS



HOULIHAN LAWRENCE  
COMMERCIAL



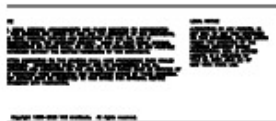
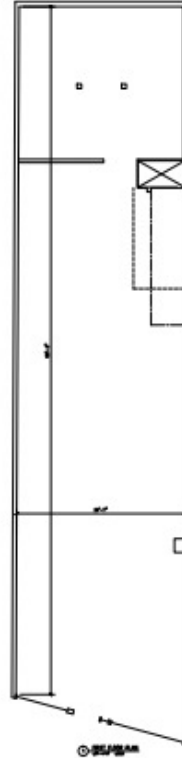
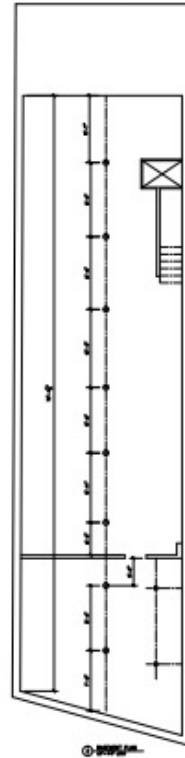
# 7

## E MAIN STREET

# FLOOR PLANS



HOULIHAN LAWRENCE  
COMMERCIAL



**vks**  
Architects  
Post Office 904 698  
Katonah, NY 10520  
914-232-9828  
Fax: 914-232-9829  
vks@vks.com

7 EAST MAIN STREET  
MOUNT KISCO NY 10549  
  
EXISTING FLOOR PLANS

JOB NO.	2025-000	<b>E1</b>
DATE	8/14/2025	
SCALE	1/8"=1'-0"	
DRAWN / CHECKED BY	WSA	

OF

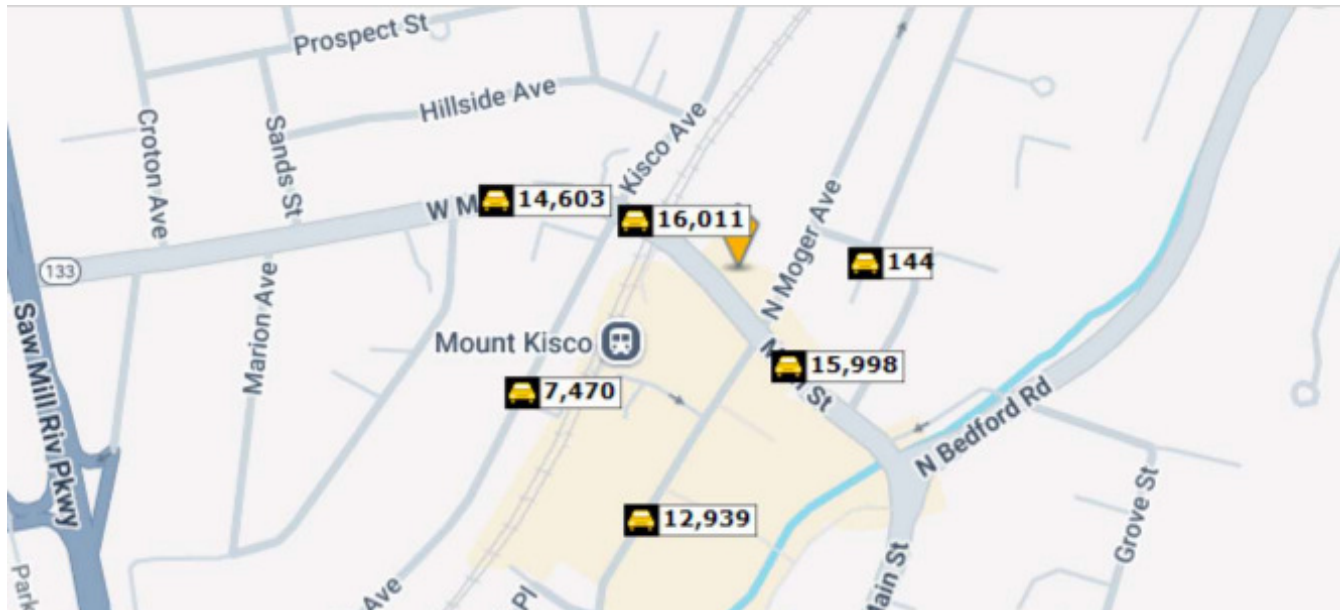
# 7

## E MAIN STREET

# LOCAL TRAFFIC INFORMATION



HOULIHAN LAWRENCE  
COMMERCIAL



Street	Cross Street	Cross Str Dist	Count Year	Avg Daily Volume	Volume Type	Miles from Subject Prop
<b>1</b> E Main St	N Moger Ave	0.02 NW	2018	15,043	MPSI	.06
<b>2</b> E Main St	N Moger Ave	0.02 NW	2024	15,998	MPSI	.06
<b>3</b> East Main Street	N Moger Ave	0.02 NW	2025	15,890	MPSI	.06
<b>4</b> E Main St	N Moger Ave	0.02 NW	2023	16,011	MPSI	.06
<b>5</b> QUAKER PL from CARPENTER AVE to		0.00	2023	144	AADT	.07
<b>6</b> Maple Avenue	Gatto Dr	0.12 SW	2025	7,470	MPSI	.14
<b>7</b> West Main Street	S Croton Ave	0.02 W	2021	14,626	AADT	.14
<b>8</b> W Main St	S Croton Ave	0.02 W	2023	14,989	MPSI	.14
<b>9</b> NY 133	Manchester Dr	0.02 W	2024	14,603	MPSI	.14
<b>10</b> Lexington Avenue	Sarles Ave	0.02 N	2025	12,939	MPSI	.15

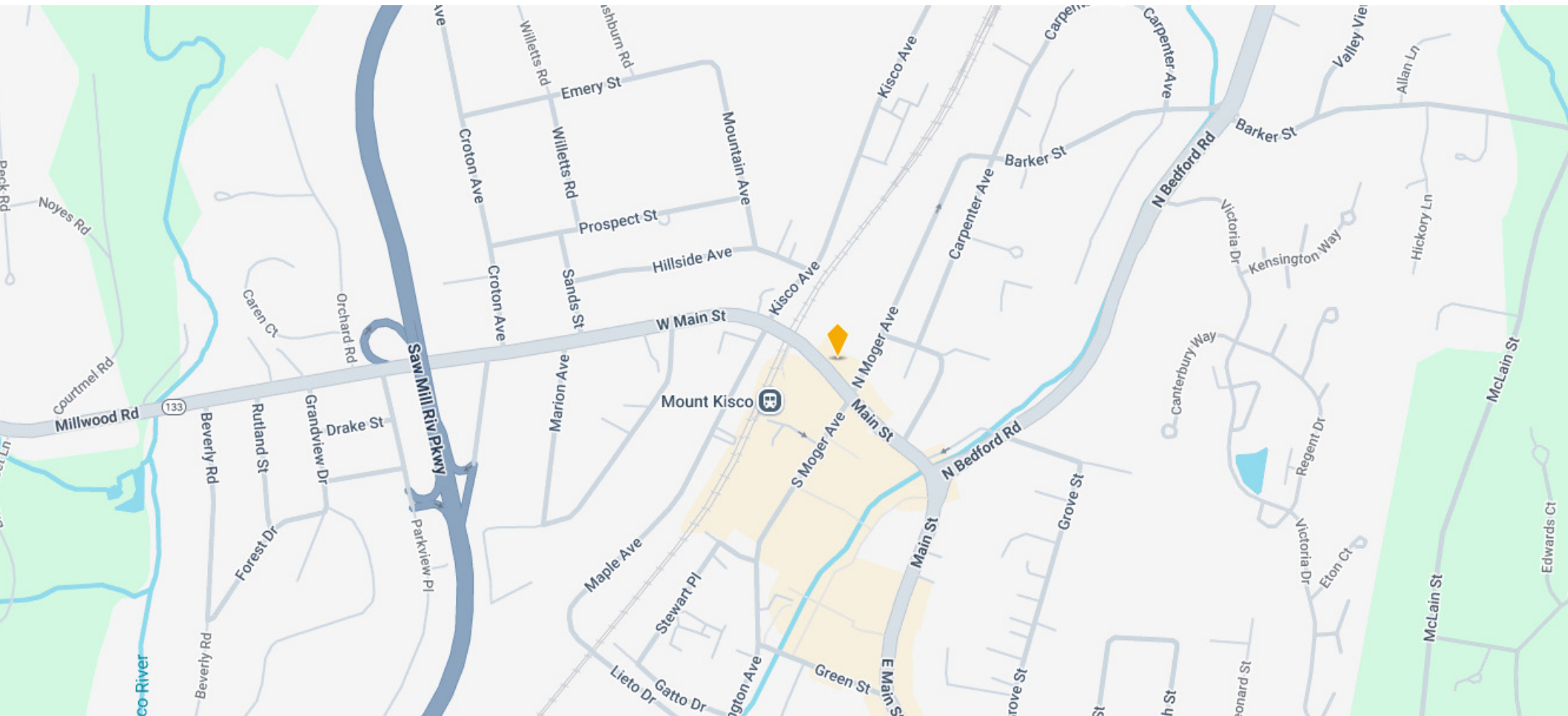
7

E MAIN STREET

# AERIAL MAP



HOULIHAN LAWRENCE  
COMMERCIAL



## LOCAL MARKET KNOWLEDGE. WORLD CLASS CONNECTIONS.

CONTACT FOR MORE INFORMATION



**Richard Aponte**  
*Associate Real Estate Broker*

M (914)-960-9148 O (914) 798-4900  
raponte@houlihanlawrence.com



HOULIHAN LAWRENCE  
COMMERCIAL

800 Westchester Avenue  
Suite N-517  
Rye Brook, NY 10573  
[www.houlihanlawrence.com/commercial](http://www.houlihanlawrence.com/commercial)

