

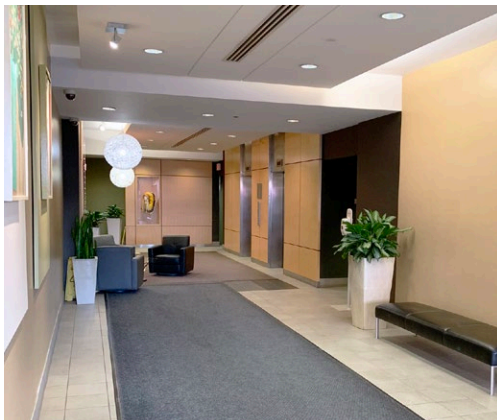
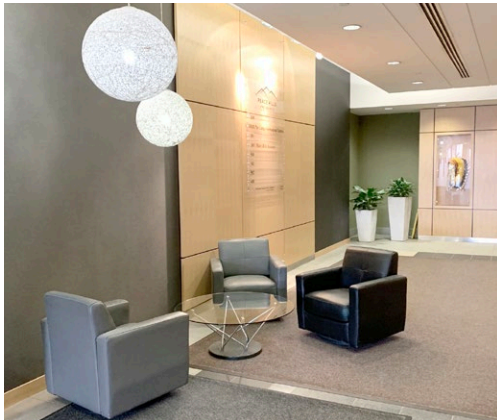
Peace Hills Insurance Building

10709 Jasper Avenue
Edmonton, Alberta



Flexible Size Options Available

Peace Hills Insurance Building offers a unique opportunity for main floor office space with exceptional street exposure. Located on the corner of Jasper Ave and 107 Street, clients and staff have direct access to numerous bus routes and easy entry to the Corona LRT station right across the street.



Leasing Details



Asking Rate

Main Floor: Market
Tower: \$14.00 Per Sq. Ft.



Operating Costs (2025)

Main Floor: \$12.20 Per Sq. Ft.
+ Utilities & Janitorial
Tower: \$15.37 Per Sq. Ft.



Parking Details

1:1,000 Sq. Ft. Underground
Nearby Street & Surface Lots

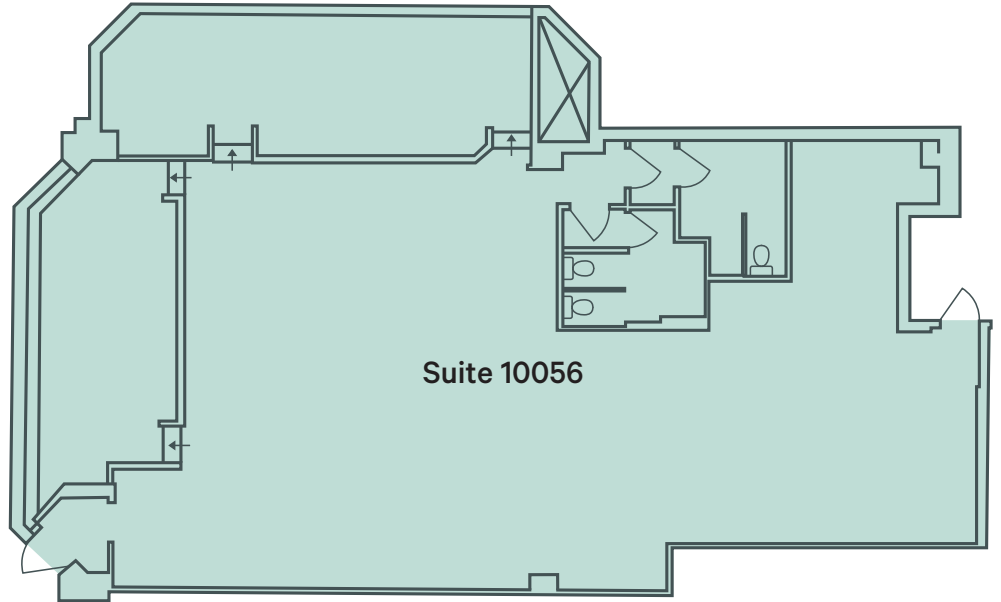


Parking Rate

Underground
\$250.00 / Stall

Main Floor

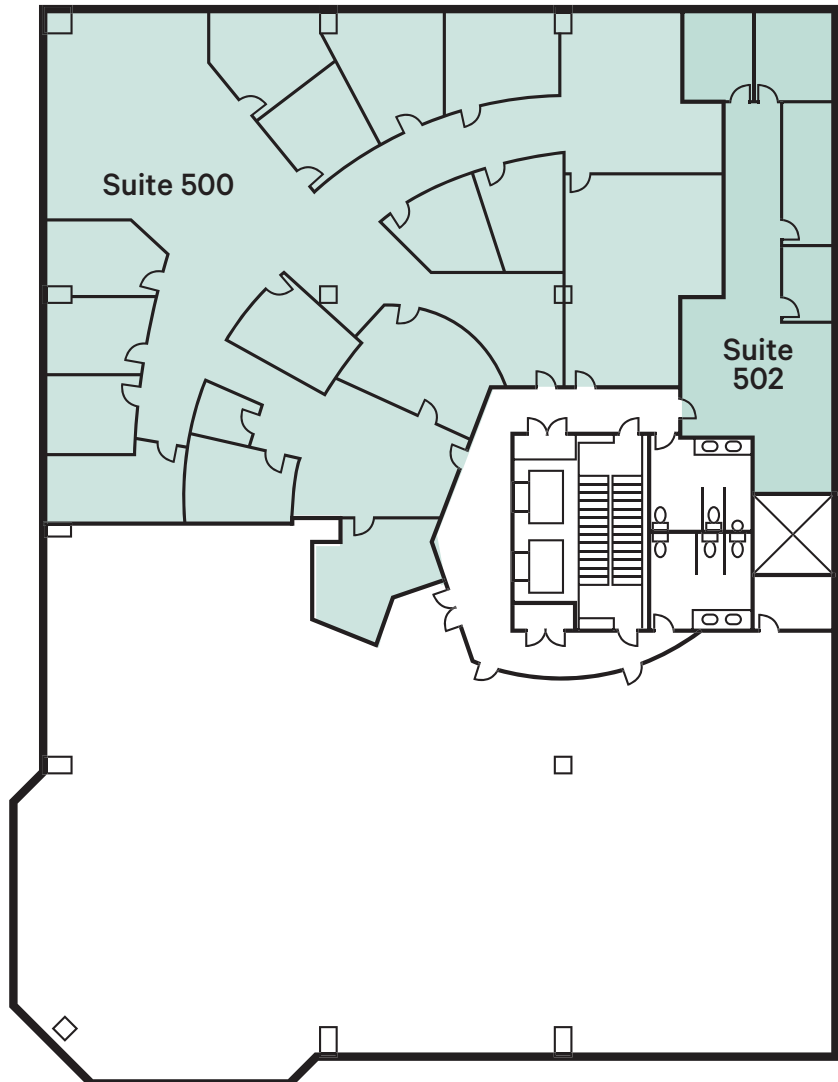
Suite 10056 : 2,585 Sq. Ft.

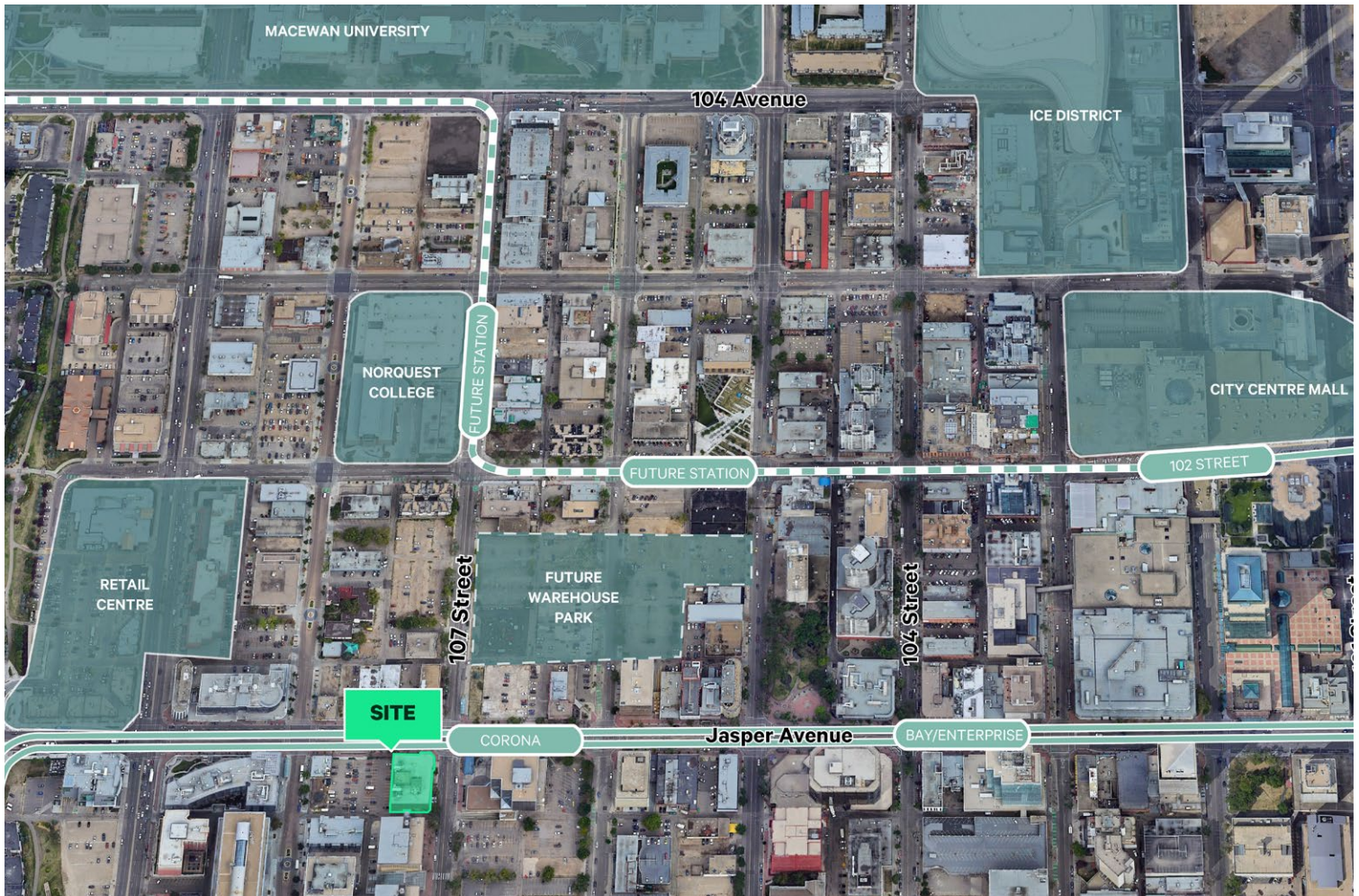


5th Floor

Suite 500 : 6,604 Sq. Ft.

Suite 502 : 1,270 Sq. Ft.





Find Out More

Jeff Simkin

Senior Vice President
+1 780 917 4633
jeff.simkin@cbre.com

© This disclaimer shall apply to CBRE Limited, and to all divisions of the Corporation (“CBRE”). The information set out herein (the “Information”) has not been verified by CBRE, and CBRE does not represent, warrant or guarantee the accuracy, correctness and completeness of the Information. CBRE does not accept or assume any responsibility or liability, direct or consequential, for the Information or the recipient’s reliance upon the Information. The recipient of the Information should take such steps as the recipient may deem necessary to verify the Information prior to placing any reliance upon the Information. The Information may change and any property described in the Information may be withdrawn from the market at any time without notice or obligation to the recipient from CBRE.