

Fulton Industrial Blvd.



Shirley Drive



SHIRLEY DRIVE

ATLANTA, GA 30336

Industrial Land For Sale
1.79± Acres

RANDALL BRYAN, SIOR

Senior Vice President
404.942.2015
rbryan@kingindustrial.com

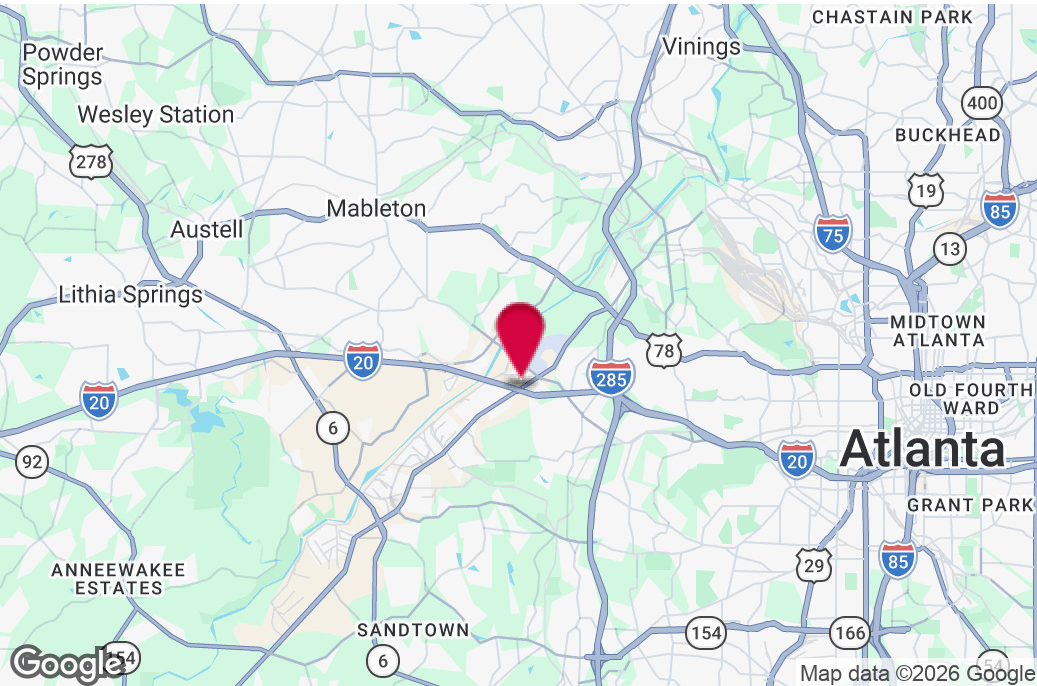
IAN HICKS

Associate
678.348.6319
ihicks@kingindustrial.com

King Industrial
Realty, Inc.

Industrial • Commercial • Investment
404.942.2000 | kingindustrial.com

FOR SALE
1.79± ACRES



PROPERTY HIGHLIGHTS

- Frontage and Exposure on I-20
- Traffic Count: 24,800± Cars Per Day
- Immediate Access to Interstate Ramps and Interchange
- Adjacent to Current GDOT I-285 / I-20 Interchange Improvement Project
- M2 Zoning (Heavy Industrial, Fulton County)

RANDALL BRYAN, SIOR

Senior Vice President

404.942.2015

rbryan@kingindustrial.com

IAN HICKS

Associate

678.348.6319

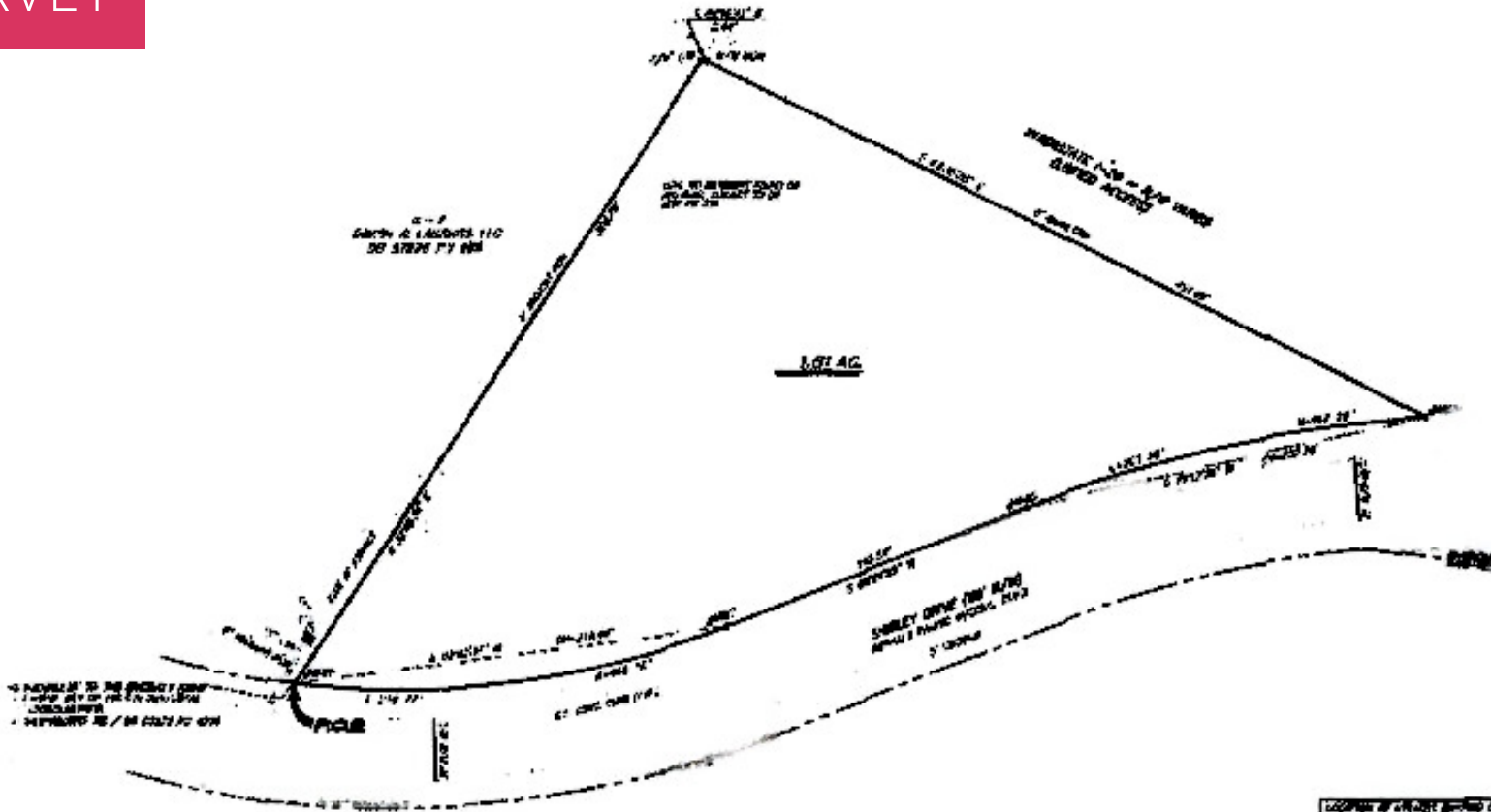
ihicks@kingindustrial.com

Every effort has been made to provide accurate information, but no liability is assumed for errors or omissions.

King Industrial Realty, Inc. **CORFAC** INTERNATIONAL

Industrial • Commercial • Investment
404.942.2000 | kingindustrial.com

SURVEY



I, the undersigned, being a duly qualified and licensed Professional Engineer in the State of Georgia, do hereby certify that the foregoing is a true and correct copy of the original survey as shown to me by the owner thereof, and that the same has been carefully examined and found to be correct and true.

2008
 State of Georgia
 Professional Engineer
 Alan C. Olson
 03-11-2020

METERS PER CHAIN IS ONE AND SIXTEENTH PART OF A CHAIN.
 EQUAL TO ONE HUNDRED AND SEVENTY-TWO METERS PER CHAIN.

BOUNDARY ADJUSTMENT
 OF 0.2 ACRES TO 0.2
 EXHIBIT NUMBER
 IN THE REGISTRY AT 17

AGENCY	
ADDRESS	
CITY	
STATE	
ZIP	
PHONE	
FAX	
E-MAIL	
DATE	
BY	
FOR	

Gaskins
 REALTY & INVESTMENT SERVICES
 1000 Peachtree Street, N.E.
 Atlanta, GA 30309
 Phone: 404.525.1234
 Fax: 404.525.1235
 Email: info@gaskins.com
 Website: www.gaskins.com

BOUNDARY ADJUSTMENT SURVEY FOR
OPS PROPERTY MANAGEMENT
 HANSEL BUSINESS PARK, LLC
 14380 WOODBURN ROAD
 ALPHARETTA, GA 30201

RANDALL BRYAN, SIOR **IAN HICKS**
 Senior Vice President Associate
 404.942.2015 678.348.6319
 rbryan@kingindustrial.com ihicks@kingindustrial.com

King Industrial Realty, Inc. **CORFAC** INTERNATIONAL
 Industrial • Commercial • Investment
 404.942.2000 | kingindustrial.com

Every effort has been made to provide accurate information, but no liability is assumed for errors or omissions.



Shirley Drive

EXCLUSIVELY LISTED BY:

RANDALL BRYAN, SIOR

Senior Vice President
rbryan@kingindustrial.com
404.942.2015

IAN HICKS

Associate
ihicks@kingindustrial.com
678.348.6319

KING Industrial
Realty, Inc.

Industrial • Commercial • Investment
404.942.2000 | kingindustrial.com