



2nd Generation Restaurant For Sale

1912 N. Broadway Street, Pittsburg, Kansas



SALE PRICE: \$599,000 | 6,697 SF BUILDING

DEMOGRAPHICS

	1 mile	3 miles	5 miles
Estimated Population	5,329	23,317	27,194
Avg. Household Income	\$61,189	\$65,184	\$69,296

- Turn-key restaurant opportunity - move in ready
- Prime freestanding location on .5 acres - high visibility off Broadway
- Clean, updated kitchen with hood and grease trap
- Minutes from Pittsburg State University
- Potential pad site
- Ample parking

 [CLICK HERE TO VIEW MORE LISTING INFORMATION](#)

For More Information Contact:

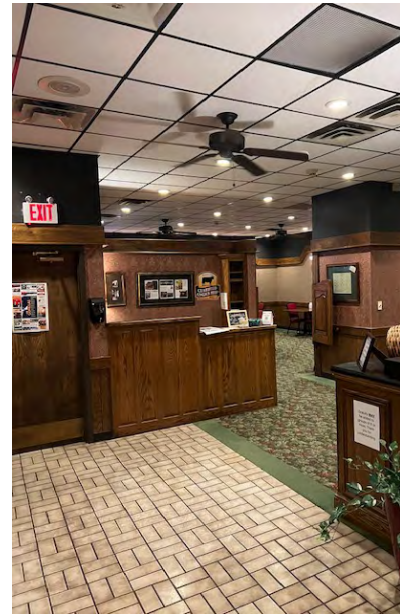
BILL MAAS, CCIM | 816.412.7392 | bmaas@blockandco.com

RYAN CLINE | 816.412.7330 | rcline@blockandco.com

Exclusive Agents



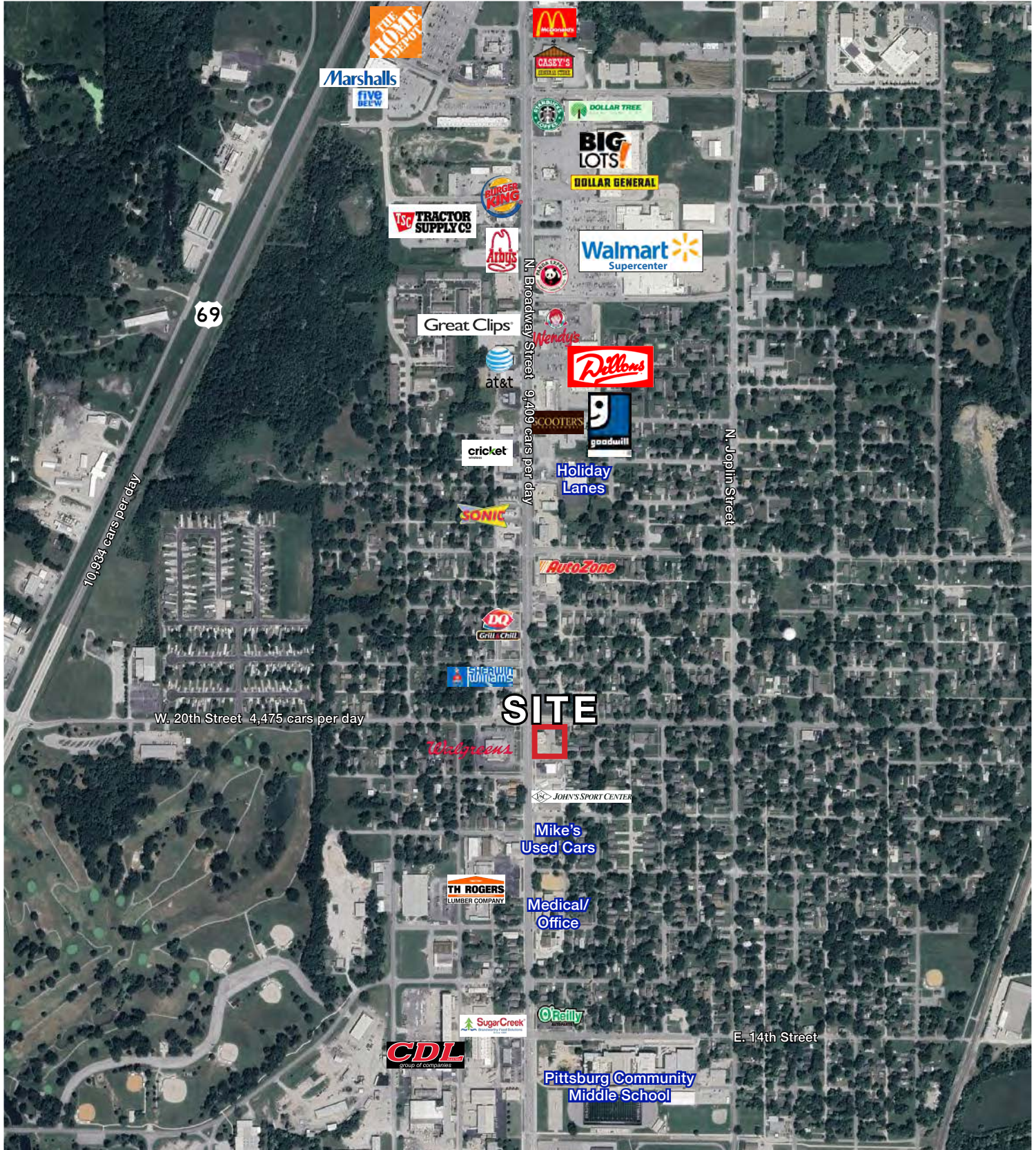
PHOTOS



2nd Generation Restaurant For Sale

1912 N. Broadway Street, Pittsburg, Kansas

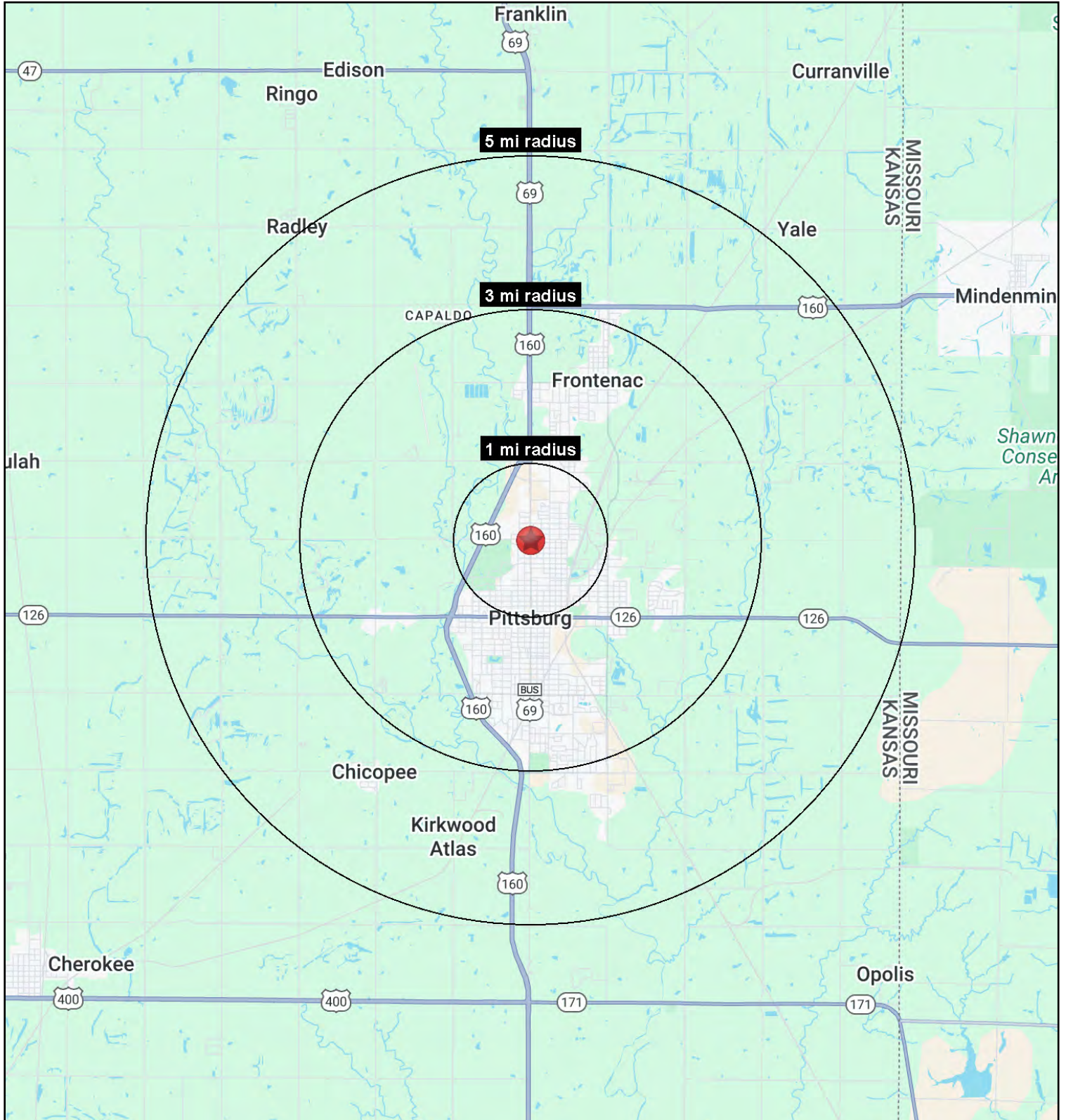
AERIAL





2nd Generation Restaurant For Sale

1912 N. Broadway Street, Pittsburg, Kansas





2nd Generation Restaurant For Sale

1912 N. Broadway Street, Pittsburg, Kansas

1912 N Broadway St Pittsburg, KS 66762	1 mi radius	3 mi radius	5 mi radius
Population			
2025 Estimated Population	5,329	23,317	27,194
2030 Projected Population	5,092	22,286	26,026
2020 Census Population	5,393	23,329	27,264
2010 Census Population	5,382	23,096	26,862
Projected Annual Growth 2025 to 2030	-0.9%	-0.9%	-0.9%
Historical Annual Growth 2010 to 2025	-	-	-
2025 Median Age	31.3	30.2	31.2
Households			
2025 Estimated Households	2,223	9,353	10,880
2030 Projected Households	2,171	9,181	10,697
2020 Census Households	2,229	9,334	10,882
2010 Census Households	2,265	9,307	10,785
Projected Annual Growth 2025 to 2030	-0.5%	-0.4%	-0.3%
Historical Annual Growth 2010 to 2025	-0.1%	-	-
Race and Ethnicity			
2025 Estimated White	77.7%	82.6%	83.5%
2025 Estimated Black or African American	3.9%	3.3%	3.0%
2025 Estimated Asian or Pacific Islander	1.6%	2.5%	2.4%
2025 Estimated American Indian or Native Alaskan	0.8%	0.7%	0.7%
2025 Estimated Other Races	16.0%	10.9%	10.3%
2025 Estimated Hispanic	14.4%	9.7%	9.0%
Income			
2025 Estimated Average Household Income	\$61,189	\$65,184	\$69,296
2025 Estimated Median Household Income	\$38,953	\$48,489	\$52,589
2025 Estimated Per Capita Income	\$25,638	\$26,546	\$28,122
Education (Age 25+)			
2025 Estimated Elementary (Grade Level 0 to 8)	6.3%	2.9%	2.7%
2025 Estimated Some High School (Grade Level 9 to 11)	5.2%	3.4%	3.2%
2025 Estimated High School Graduate	34.1%	27.8%	26.5%
2025 Estimated Some College	22.0%	23.6%	23.5%
2025 Estimated Associates Degree Only	9.3%	9.0%	9.0%
2025 Estimated Bachelors Degree Only	17.2%	21.7%	22.3%
2025 Estimated Graduate Degree	5.9%	11.7%	12.9%
Business			
2025 Estimated Total Businesses	313	834	1,005
2025 Estimated Total Employees	3,084	9,750	12,088
2025 Estimated Employee Population per Business	9.9	11.7	12.0
2025 Estimated Residential Population per Business	17.0	28.0	27.0

©2025. Sites USA. Chandler, Arizona. 480-491-1112 Demographic Source: Applied Geographic Solutions 5/2025. TIGER Geographv - RS1

