

## OAKLAND INDUSTRIAL PARK AKA AFFORDABLE WAREHOUSES

1900-2261 NW 29TH STREET, OAKLAND PARK, FL 33311

1907-1911 NW 29TH STREET



## SPACE HIGHLIGHTS

- 5,000 SF
- 970 SF of air-conditioned offices
- Can modify office to suit
- 4,030 SF of warehouse
- 3 Phase 200amp power
- 2 front 10' x 12' grade level overhead doors
- 2 rear 10' x 12' grade level overhead doors
- Kitchenette
- LED lighting
- 2 private restrooms



## ANGIE WEAVER

Lauderdale Lakes and Lauderdale Manager  
Direct: 954.485.9200 | Cell: 917.645.2339  
angie@levyrai.com

## HALEY PRESSER

Property Manager / Sales Associate  
Direct: 954.485.9200 | Cell: 954.254.5396  
Haley@levyrai.com

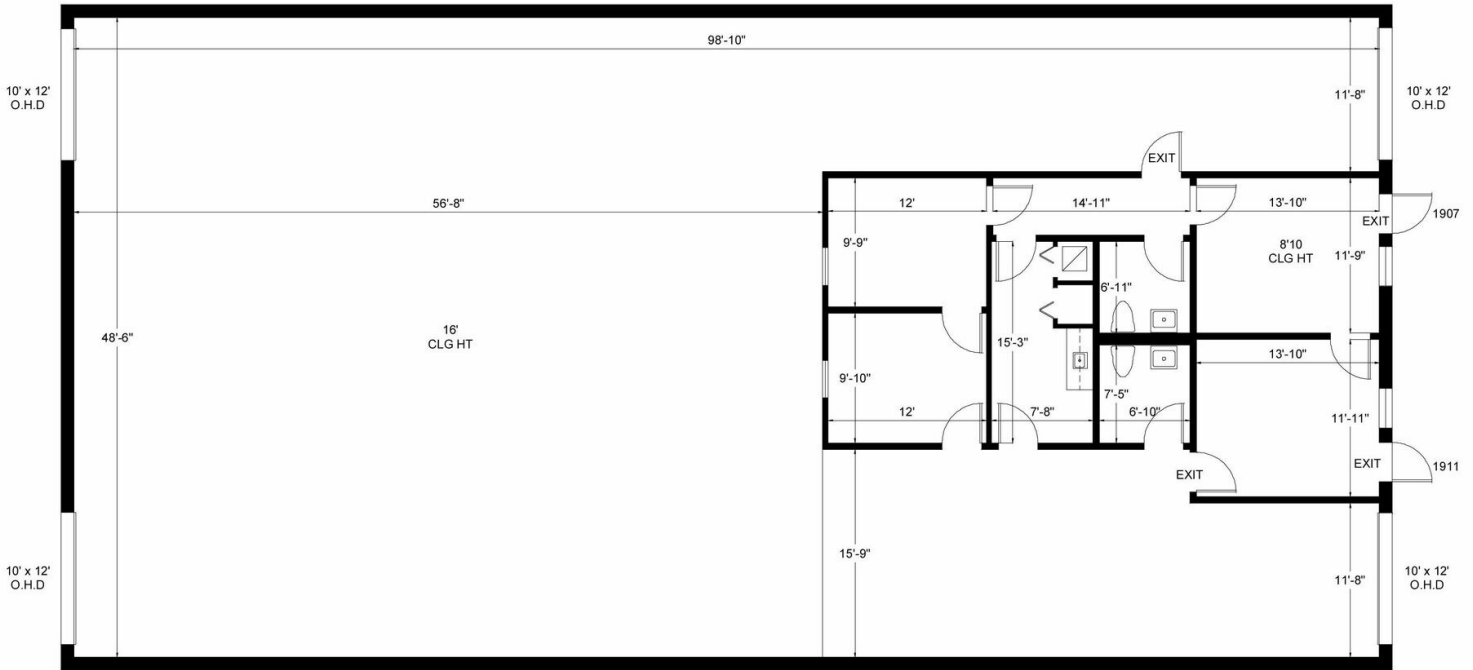


# OAKLAND INDUSTRIAL PARK AKA AFFORDABLE WAREHOUSES

1900-2261 NW 29TH STREET, OAKLAND PARK, FL 33311

## 1907-1911 NW 29TH STREET FLOOR PLAN

1907-1911 NW 29TH ST | OAKLAND PARK, FL 33311



Office - 970 sq.ft.  
Warehouse - 4,030 sq.ft.

5,000 Rentable Sq. Ft.  
[www.LevyRealtyAdvisors.com](http://www.LevyRealtyAdvisors.com)

**ANGIE WEAVER**

Lauderdale Lakes and Lauderdale Manager  
Direct: 954.485.9200 | Cell: 917.645.2339  
angie@levyrai.com

**HALEY PRESSER**

Property Manager / Sales Associate  
Direct: 954.485.9200 | Cell: 954.254.5396  
Haley@levyrai.com

