

Oxford Companies
734.665.6500
oxfordcompanies.com



Integrated
Real Estate
Services



Retail Property For Lease

Liberty Square

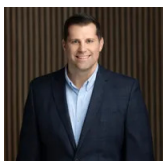
255 E. Liberty Street, Suite 231

Ann Arbor, MI 48104

435 SF

\$30.00 SF/yr (MG)

Available



Contact Brad Fenkell for
more information or to
schedule a tour.

Office: 734.665.6500
Cell: 734.395.7135
bfenkell@oxfordcompanies.com

Liberty Square
255 E. Liberty Street, Suite 231
Ann Arbor, MI 48104



Integrated
Real Estate
Services



OFFERING SUMMARY

Lease Rate:	\$30.00 SF/yr (MG)
Available SF:	435 SF
Ceiling Height:	8'
Building Size:	24,319 SF
Lot Size:	0.35 Acres
Zoning:	D1

PROPERTY OVERVIEW

Located in the heart of downtown Ann Arbor, 255 East Liberty Street offers a rare opportunity along one of the city's most active pedestrian corridors. Positioned on Liberty Street between Main Street and South State Street, the property benefits from exceptional visibility and consistent foot traffic generated by students, residents, office workers, and visitors. Surrounded by a dynamic mix of restaurants, retailers, entertainment venues, and University of Michigan activity, the location provides direct access to Ann Arbor's vibrant downtown energy. The available space is ideal for boutique retail, service-oriented users, or specialty concepts seeking a highly walkable and centrally located address.

PROPERTY HIGHLIGHTS

- Located in downtown Ann Arbor, steps from the University of Michigan campus
- Highly trafficked street and sidewalk offers great exposure
- Lower level retail space with high visibility signage and accessibility
- Neighbored by popular restaurants and retail shops
- Underground and above-ground parking structures one block away
- Streamlined leasing experience for convenience and ease
- Professionally managed with 24/7 on-call emergency maintenance



Contact Brad Fenkell for more information or to schedule a tour.

Office: 734.665.6500
Cell: 734.395.7135
bfenkell@oxfordcompanies.com

Liberty Square
255 E. Liberty Street, Suite 231
Ann Arbor, MI 48104



Integrated
Real Estate
Services



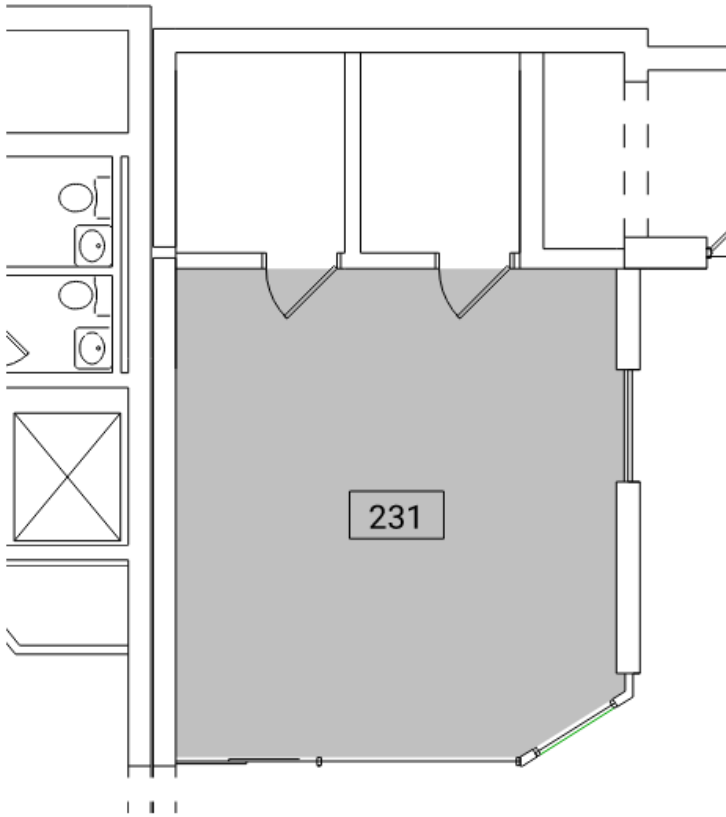
Contact Brad Fenkell for
more information or to
schedule a tour.

Office: 734.665.6500
Cell: 734.395.7135
bfenkell@oxfordcompanies.com

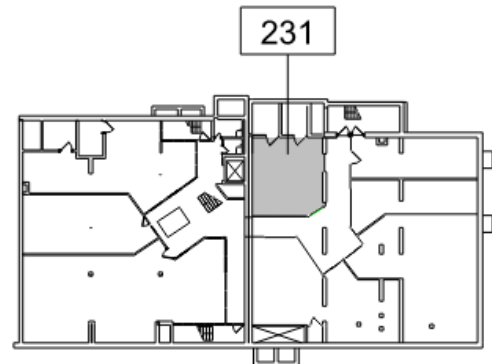
Liberty Square
255 E. Liberty Street, Suite 231
Ann Arbor, MI 48104



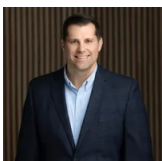
Integrated
Real Estate
Services



N
2 Partial Existing Lower Level Floor Plan
EX-A 4' 8' 16' 1/8" = 1'-0"



N
1 Key Plan - Lower Level
EX-A 50' 100' 1" = 50'-0"



Contact Brad Fenkell for
more information or to
schedule a tour.

Office: 734.665.6500
Cell: 734.395.7135
bfenkell@oxfordcompanies.com

Liberty Square
251 E. Liberty Street, Suite 231
Ann Arbor, MI 48104



Integrated
Real Estate
Services



Google



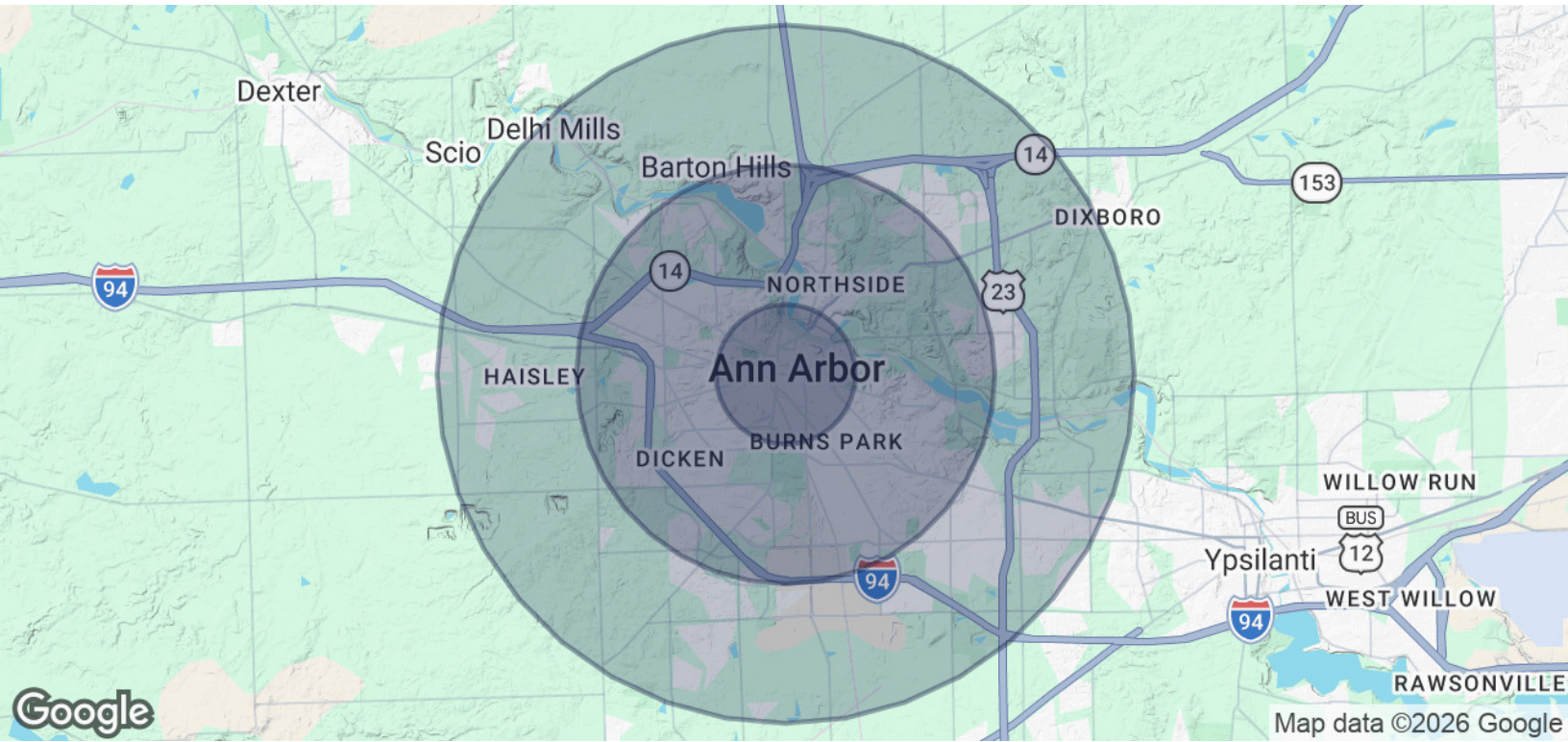
Contact Brad Fenkell for more information or to schedule a tour.

Office: 734.665.6500
Cell: 734.395.7135
bfenkell@oxfordcompanies.com

Liberty Square
 255 E. Liberty Street, Suite 231
 Ann Arbor, MI 48104

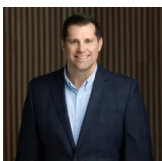


Integrated
 Real Estate
 Services



POPULATION	1 MILE	3 MILES	5 MILES
Total Population	35,860	106,197	156,485
Average age	29	35	37
Average age (Male)	29	35	36
Average age (Female)	29	36	38
HOUSEHOLDS & INCOME	1 MILE	3 MILES	5 MILES
Total households	13,124	42,953	65,142
# of persons per HH	2.7	2.5	2.4
Average HH income	\$77,506	\$120,812	\$125,739
Average house value	\$525,399	\$541,087	\$505,497

* Demographic data derived from 2020 ACS - US Census



Contact Brad Fenkell for more information or to schedule a tour.

Office: 734.665.6500
 Cell: 734.395.7135
 bfenkell@oxfordcompanies.com