



# FOR LEASE

700 S. Van Buren Street, Unit B  
Placentia, CA

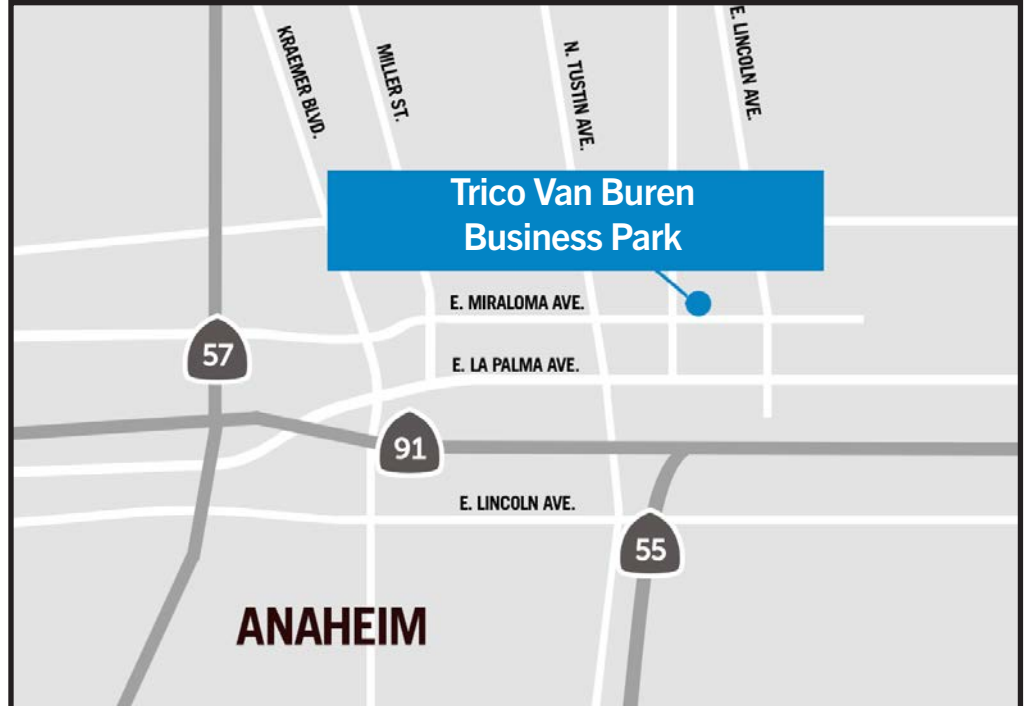
**2,025 SF Industrial Unit**

## SITE HIGHLIGHTS:

- Exterior Security Lights
- Nicely Landscaped
- 14 Ft Clear Rollup Door
- 18 Ft Clear Ceiling

## UNIT FEATURES:

- LVP Flooring
- LED Lighting
- 200 Amps, 3 Phase Power



## FOR FURTHER DETAILS:

**JOHN PAK**

john@tricoREALTY.com  
License #01483069

This information has been furnished from sources which we deem reliable; however, we do not guarantee its accuracy and assume no liability. Do not rely on any of the information contained herein without verifying it yourself directly with the listing broker or owner.


**Trico Realty, Inc.**  
License #00342120

3100-A Pullman Street  
Costa Mesa, CA 92626

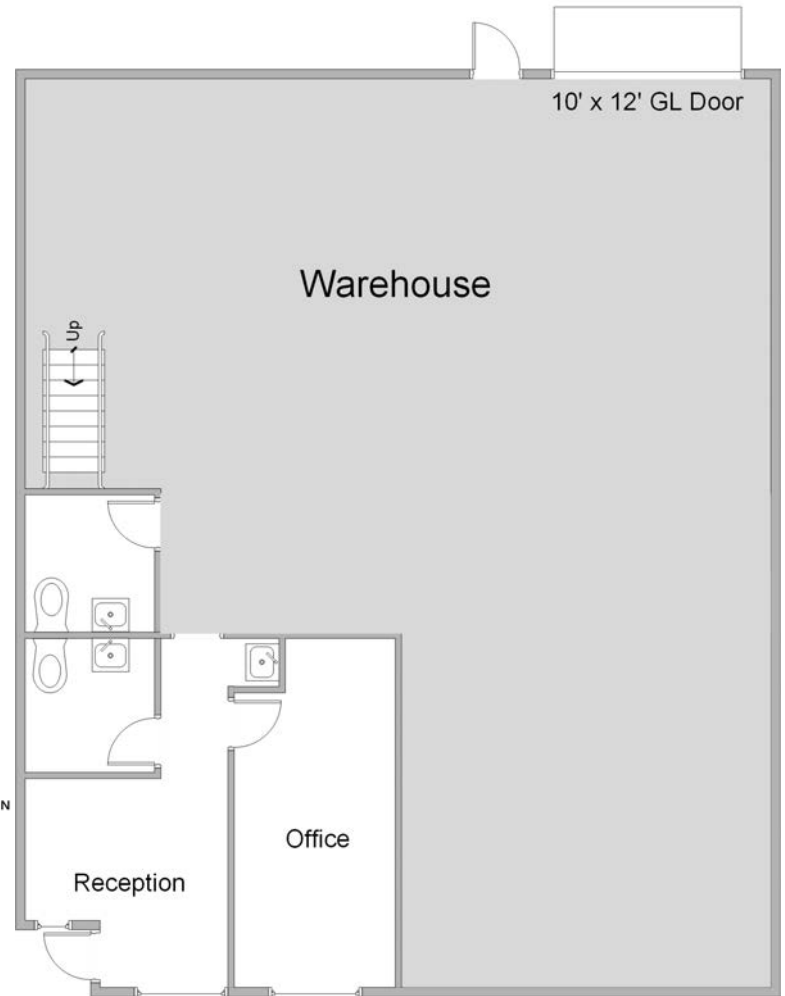
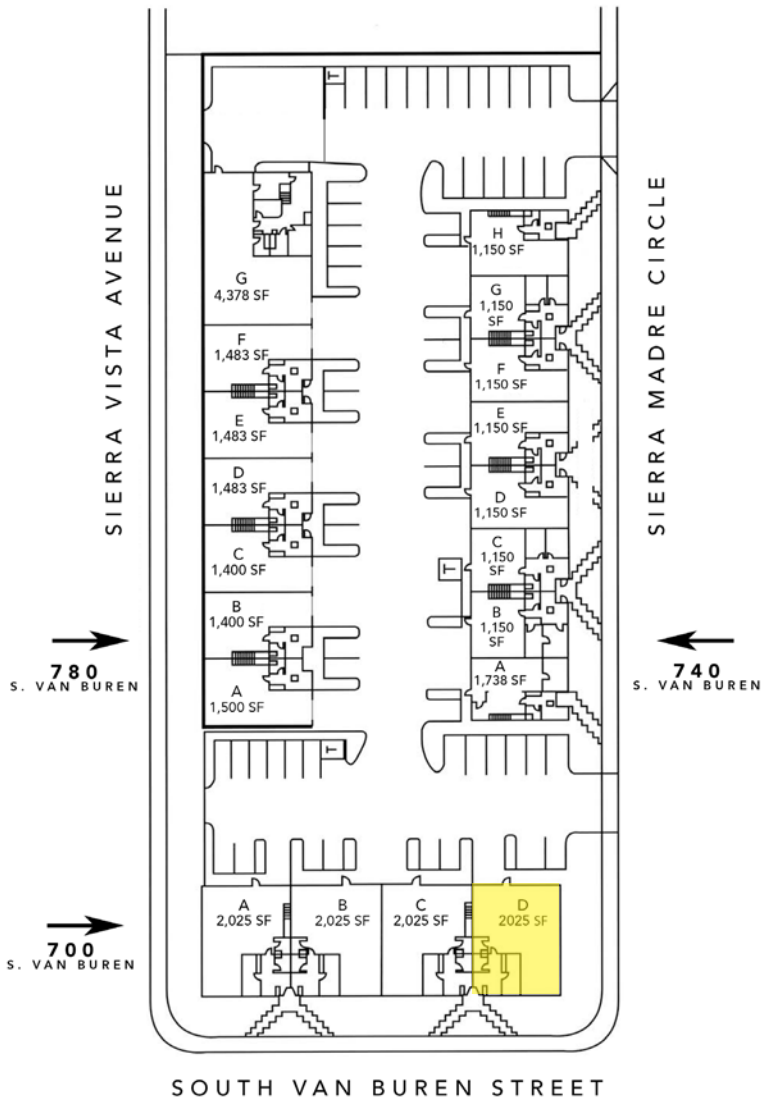
**714-751-4420**  
TricoRealty.com

## Unit Features

 Power: 200A | 120/208

 Clearance Height: 18'

 Ground Level Doors: One 10'x12'



\*Floorplans Not to Scale