

INDUSTRIAL AVAILABILITY

savills

FOR LEASE

112 Pike Street, Pontiac, MI 48341



SPACE PROFILE

29,000 SF
Total SF

\$6.95 NNN
Asking Rate

50 Car / 12 Truck
Parking

12' - 14'
Clear Height

8
Loading Docks

Light Industrial
Zoning



SPACE PROFILE

29,000 SF

Total SF

\$6.95 NNN

Asking Rate

12' - 14'

Clear Height

8

Loading Docks

50 Car / 12 Truck

Parking

Light Industrial

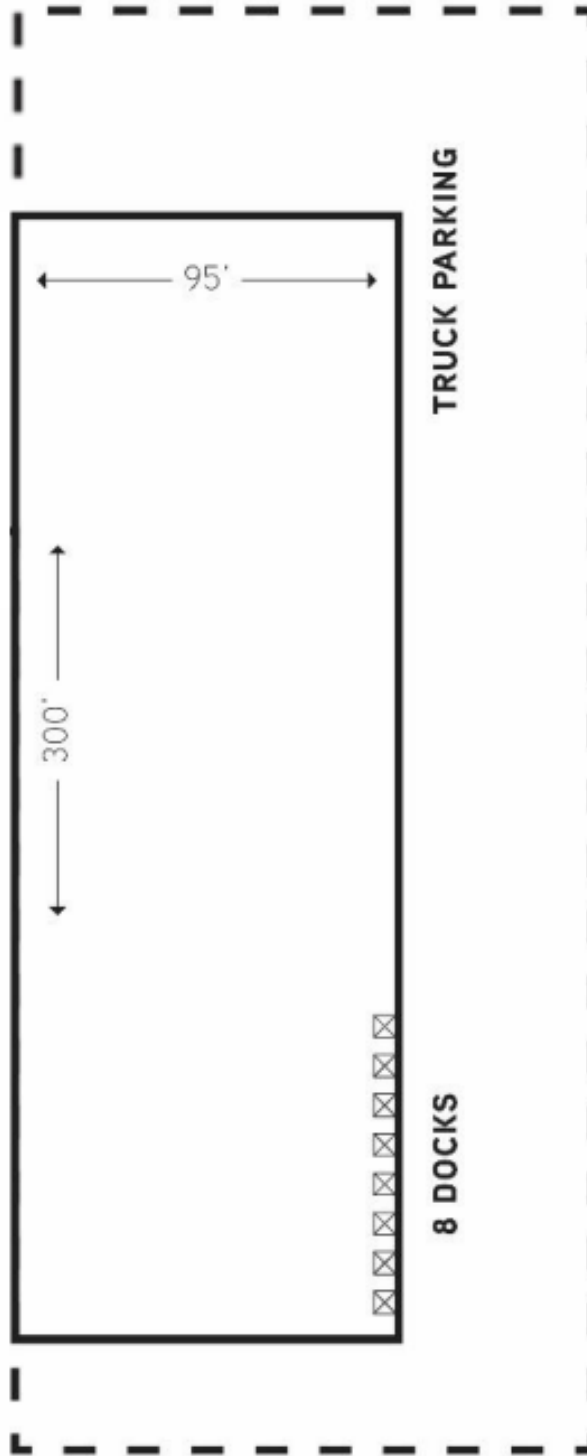
Zoning

KEY HIGHLIGHTS

- Freestanding warehouse in Oakland County
- 95' clear span configuration
- Eight (8) dock doors
- Fenced and secured parking area
- Fire suppression + ventilation system
- Strong truck circulation / functionality
- Immediate access to Woodward Avenue

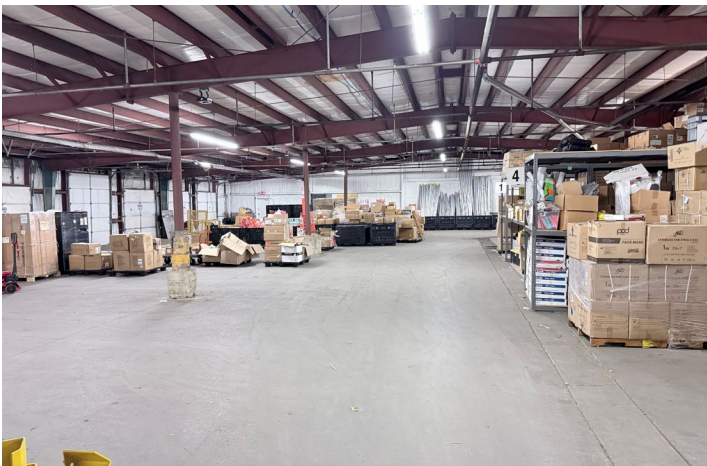
FLOOR PLAN

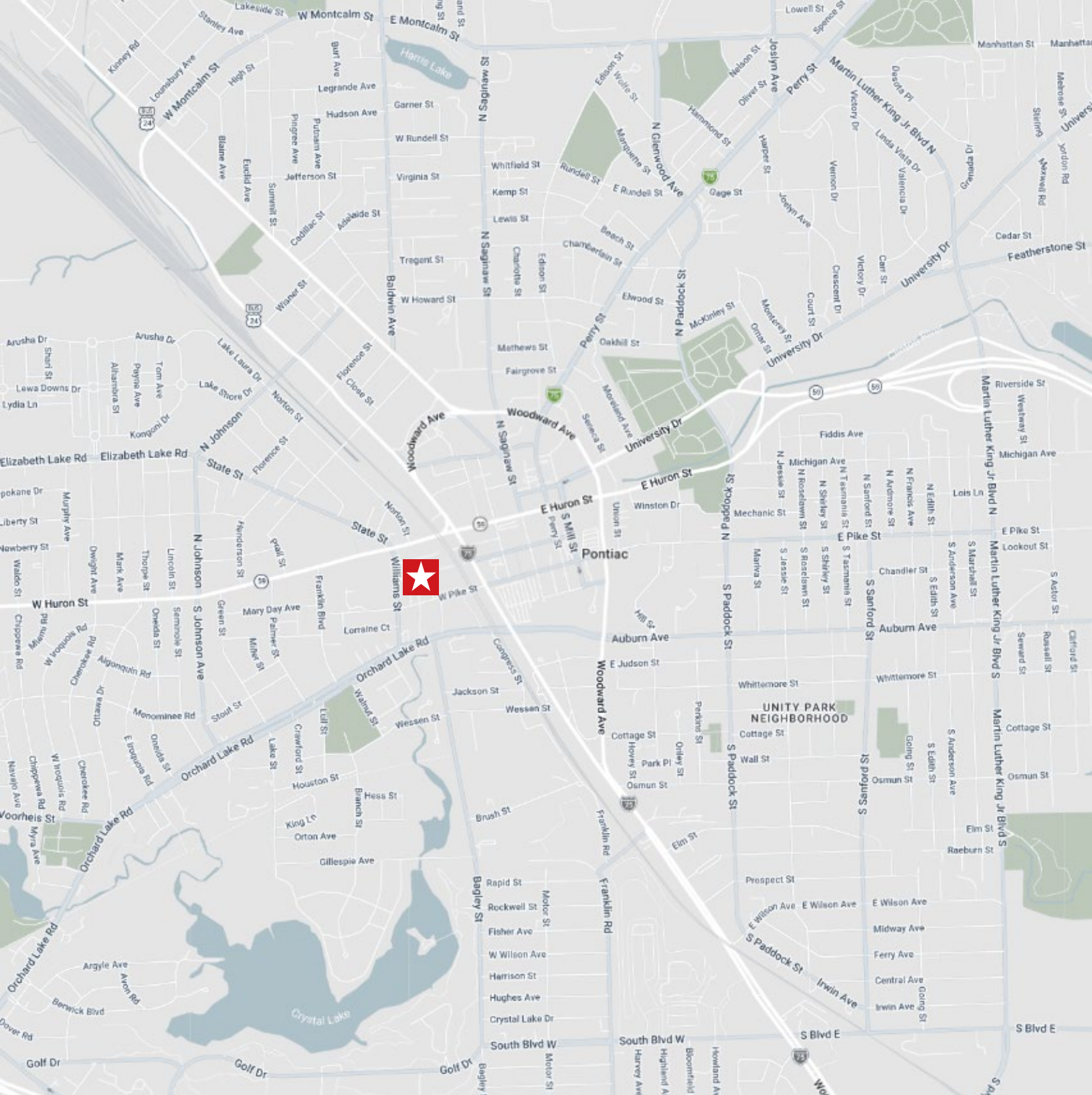
29,000 SF



W PIKE STREET

RAIL LINE
WOODWARD AVENUE





Daniel T. Jacob

+1 248 892 9000
djacob@savills.us

© 2024 Savills. All rights reserved. The information contained in this communication has been obtained from a variety of sources believed to be reliable but has not been verified. NO WARRANTY OR REPRESENTATION, EXPRESS OR IMPLIED, IS MADE AS TO THE CONDITION OF THE PROPERTY OR ACCURACY OR COMPLETENESS OF THE INFORMATION CONTAINED HEREIN AND SAME IS SUBMITTED SUBJECT TO ERRORS, OMISSIONS, CHANGE OF PRICE, RENTAL OR OTHER CONDITIONS, WITHDRAWAL WITHOUT NOTICE AND TO ANY SPECIFIC CONDITIONS IMPOSED BY THE PROPERTY OWNER OR LESSOR.