

# For Sale

1740 Howard Way  
Woodland, WA 98674


## Prime Industrial Site

3.4 Acres With Previously Approved  
Plans for 49,614 SF Building

1740 Howard Way

1.93 Acres Additional Land Available

Garret Harper, CCIM, SIOR

 360.597.0572

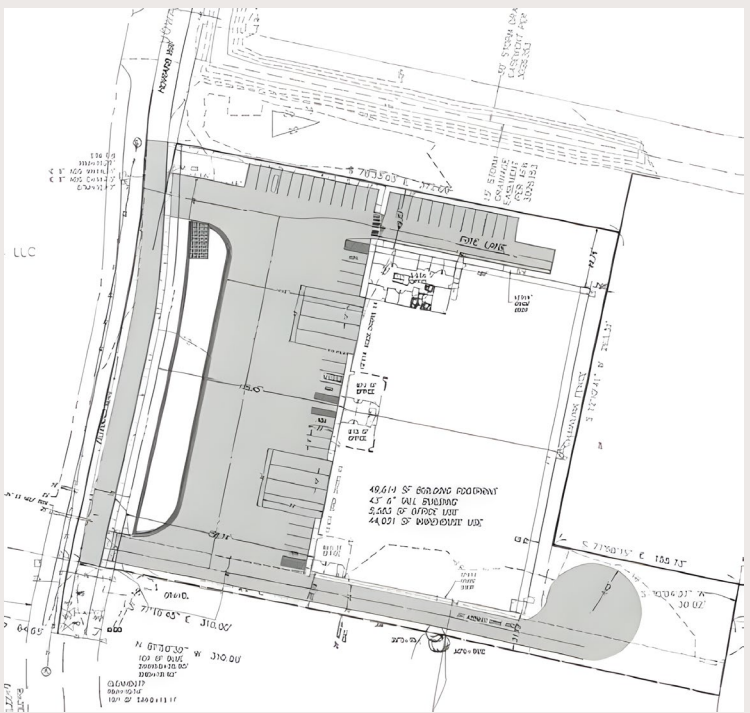
 gharper@fg-cre.com



900 Washington St., Suite 850  
Vancouver, WA 98660

# For Sale

1740 Howard Way, Woodland, WA 98674



## Property Description

Light Industrial site with previously approved plans for 49,614 SF industrial building on 3.04 acres, with an additional 1.93 acres available for storage yard or future building.

## Location

Two minutes from 1-5 exit 22 in Woodland, Washington.

## Property Highlights

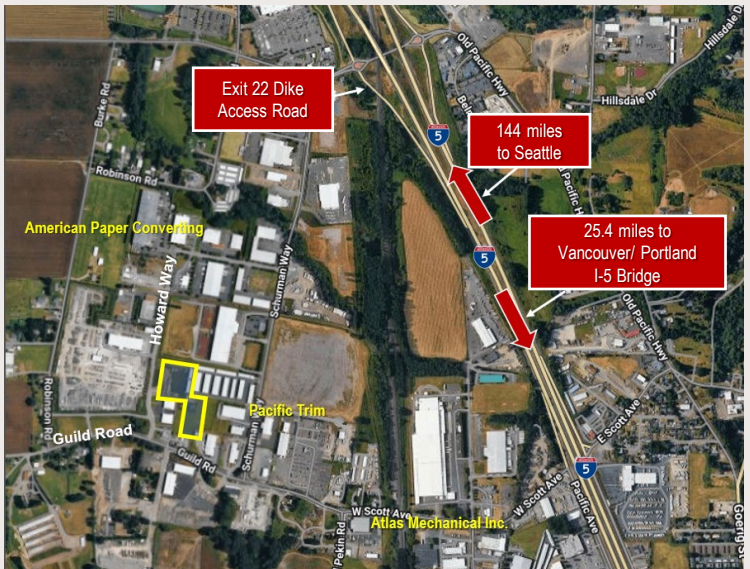
- Great Freeway Access
- Level Site
- Light Industrial Zoning
- Includes previously approved building plans

## Sale Price

3.04 acres, includes previously approved building plans	\$1,595,000
---	-------------

1.93 acres additional land	\$495,000
----------------------------	-----------

\*1.93-acre site is available as a package with 3.04-acre site or separately after the sale of the 3.04-acre site.



This statement with the information it contains is given with the understanding that all the negotiations relating to the purchase, rental or leasing of the property described above shall be conducted through this office. The above information, while not guaranteed, has been secured from sources we believe to be reliable.