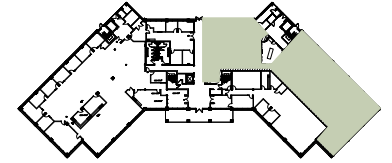


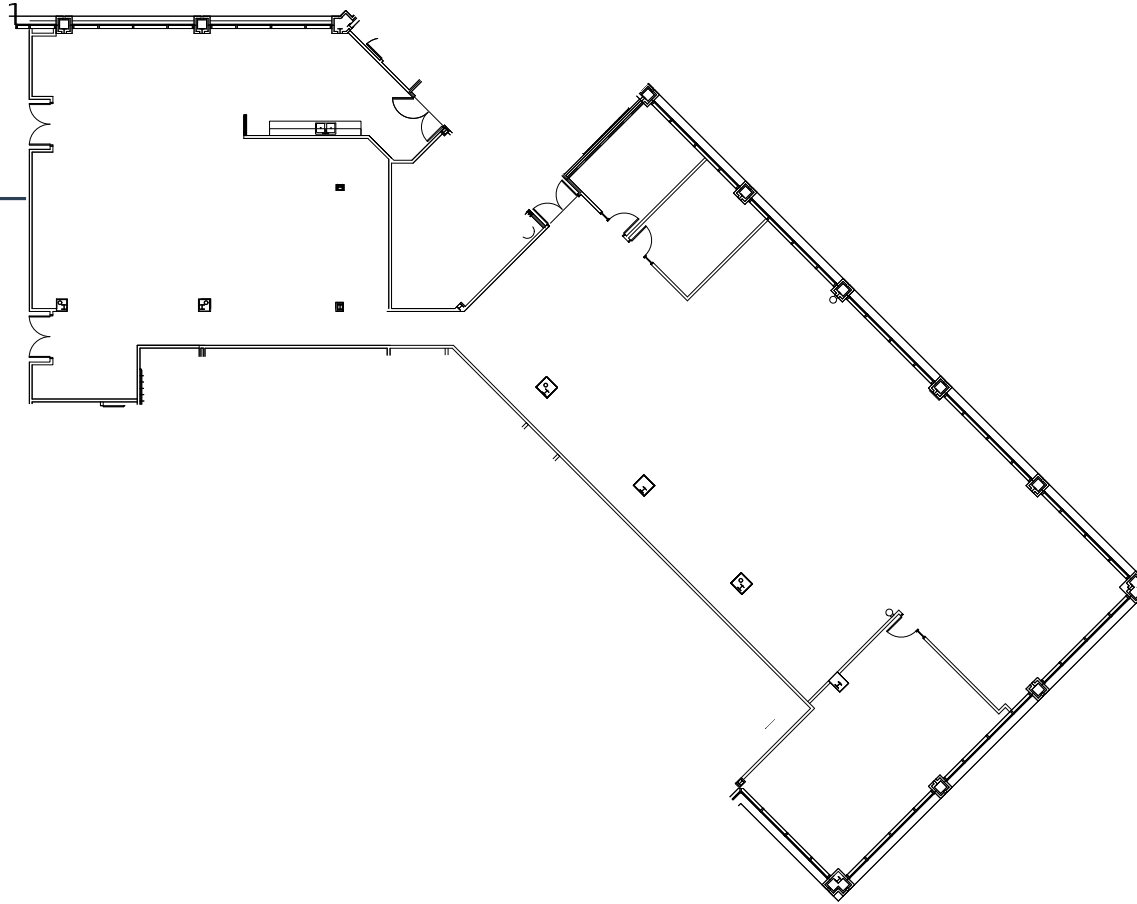
SUITE 100

1800 PERIMETER PARK DRIVE | MORRISVILLE, NC

1800 PERIMETER



SUITE 100
9,104 RSF



LEASING CONTACTS

William Allen

Managing Partner

919.415.4390 | wallen@trinity-partners.com

Alex Dunn

Director, Office Leasing

919.415.4405 | adunn@trinity-partners.com