

# West Town Plaza

Suite 109 Sublease

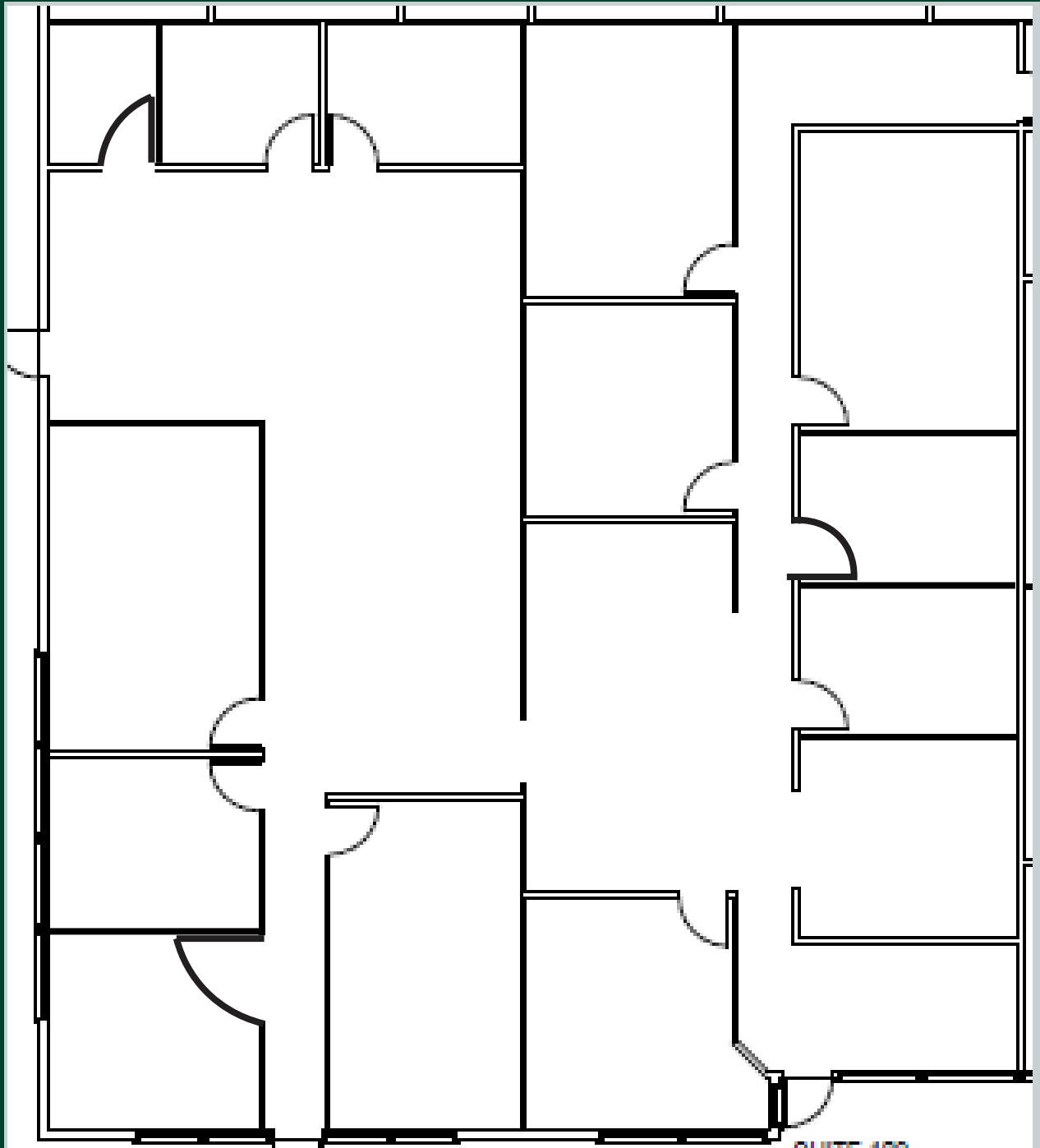
2964 West 4700 South  
Salt Lake City, UT  
[www.cbre.com/saltlakecity](http://www.cbre.com/saltlakecity)



West Town Plaza

2964 West 4700 South | Salt Lake City, UT

# Floorplan



# Property Features

- + Suite 109
- + 4,517 RSF
- + \$18.35/RSF
- + Sublease Term Through November 30, 2028
- + 4/1,000 Parking
- + Great Central Valley Location



# Map

|   |  |  |
|---|--|--|
| <p><b>Restaurant - Fast Casual</b></p> <ul style="list-style-type: none"> <li>1 Cafe Rio</li> <li>2 Panda Express</li> <li>3 Cupbop</li> <li>4 Café Zupas</li> <li>5 Blaze Pizza</li> <li>6 Chipotle Mexican Grill</li> </ul> <p><b>Restaurant - Bakery/Desserts</b></p> <ul style="list-style-type: none"> <li>1 Handel's Home Made Ice Cream</li> <li>2 Baskin Robbins</li> <li>3 Crumbl Cookies</li> <li>4 Pretzelmaker</li> <li>5 Dirty Dough</li> <li>6 Nothing Bundt Cakes</li> <li>7 Sweet Action</li> </ul> <p><b>Car Wash</b></p> <ul style="list-style-type: none"> <li>1 Mister Car Wash</li> <li>2 Shiny Shell Car Wash</li> </ul> <p><b>Grocery</b></p> <ul style="list-style-type: none"> <li>1 Costco Wholesale</li> <li>2 Harmons</li> <li>3 Macey's</li> <li>4 Smith's Food &amp; Drug Stores</li> <li>5 Rancho Markets</li> </ul> <p><b>Restaurant - Casual</b></p> <ul style="list-style-type: none"> <li>1 Applebee's</li> <li>2 Mr. &amp; Mrs. Crab</li> <li>3 Cracker Barrel</li> </ul> | <ul style="list-style-type: none"> <li>4 Red Robin Gourmet Burgers</li> <li>5 Applebee's</li> <li>6 Olive Garden</li> <li>7 Hook &amp; Reel Cajun Seafood &amp; Bar</li> <li>8 IHOP</li> <li>9 Texas Roadhouse</li> <li>10 Sizzler</li> <li>11 KPOT Korean BBQ &amp; Hot Pot</li> </ul> <p><b>Reference Points</b></p> <ul style="list-style-type: none"> <li>★ West Town Plaza</li> </ul> |  |
|---|--|--|

## Contact Us

**Eric Smith**  
 Senior Vice President  
 +1 801 869 8008  
 eric.smith@cbre.com

**Kreg Peterson**  
 First Vice President  
 +1 801 869 8092  
 kreg.peterson@cbre.com

© 2021 CBRE, Inc. All rights reserved. This information has been obtained from sources believed reliable, but has not been verified for accuracy or completeness. You should conduct a careful, independent investigation of the property and verify all information. Any reliance on this information is solely at your own risk. CBRE and the CBRE logo are service marks of CBRE, Inc. All other marks displayed on this document are the property of their respective owners, and the use of such logos does not imply any affiliation with or endorsement of CBRE. Photos herein are the property of their respective owners. Use of these images without the express written consent of the owner is prohibited.