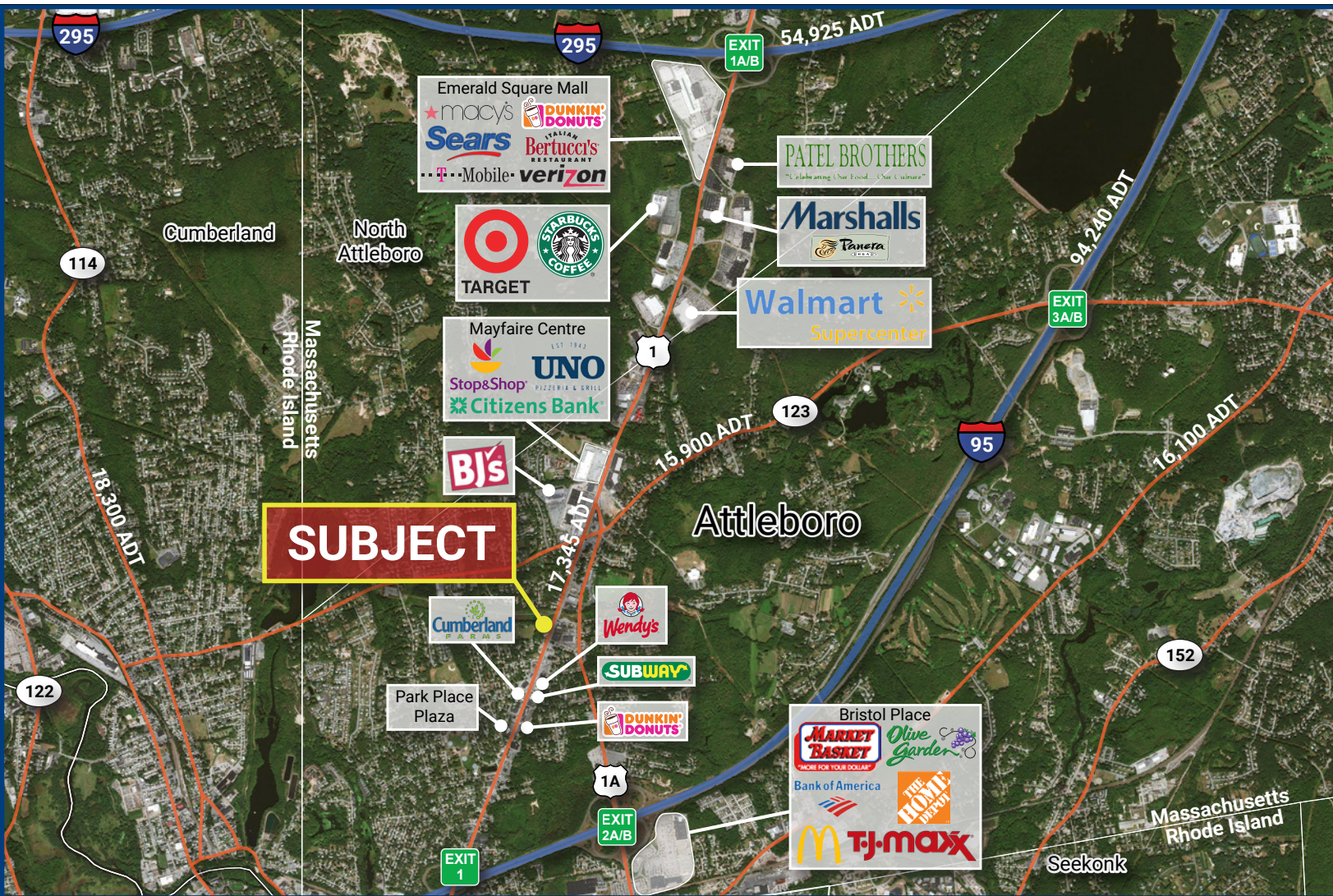


# ATTLEBORO MA 37,798 SF COMMERCIAL PAD FOR LEASE

581 Washington Street • Attleboro, MA 02703



## Highlights:

- Many new retailers developing near this site
- Landlord will also consider a build to suite or sale
- Large flat commercial/ retail lot
- Easy access to and from Routes 95, 1, 1A and other local roads
- Excellent Visibility and High Traffic area
- Great Restaurant, Retail, QSR, Auto Parts, office and other daily needs Uses

# ATTLEBORO MA 37,798 SF COMMERCIAL PAD FOR LEASE

581 Washington Street • Attleboro, MA 02703



## Trade Area:

	1 - Mile	3 - Mile	5 - Mile
<b>Total Population</b>	6,688	94,115	202,401
<b>Total Households</b>	2,455	36,573	79,727
<b>Med. HH Income</b>	\$81,393	\$50,439	\$56,037
<b>Owner Occ. Housing</b>	1,976	18,582	43,337
<b>Renter Occ. Housing</b>	470	18,017	36,448
<b>Total Businesses</b>	232	2,741	6,246
<b>Total Employees</b>	2,566	34,767	83,545

## Property Profile:

<b>Total Land Area:</b>	37,798 SF
<b>Available:</b>	Immediately
<b>Frontage:</b>	200+ FT
<b>Zone:</b>	General Business
<b>Services:</b>	Municipal Water and Sewer
<b>Utilities:</b>	Gas, Electricity, Telephone, Cable

## For More Information Contact:

**Walter Steinkrauss**  
617-845-5002

wsteinkrauss@paramountpartners.com

The information contained herein is from sources deemed reliable, however no representation or warranty is made to its accuracy, and is submitted subject to errors, omissions, change of price, rental or other conditions, prior sale or lease, or withdrawal without notice.