



FOR LEASE

Plaza at Andover

524-640 N Andover Rd
Andover, KS 67002



PROPERTY INFO



LEASE RATE
Contact Broker



LEASE TYPE
NNN



SPACE AVAILABLE
+/-4,850 - +/-13,785

HIGHLIGHTS

- Located at the busy intersection of Andover Rd. (14,711 VPD) and Central Ave. (6,357 VPD).
- Great visibility and easy accessibility.
- Tenants include Dollar Tree, Gambino's, Music Scene, Advanced Physical Therapy, K Westphal Jewelers, and others.



CONTACT

Kurt Yowell
316.734.1139
kurt@streetcommercial.com

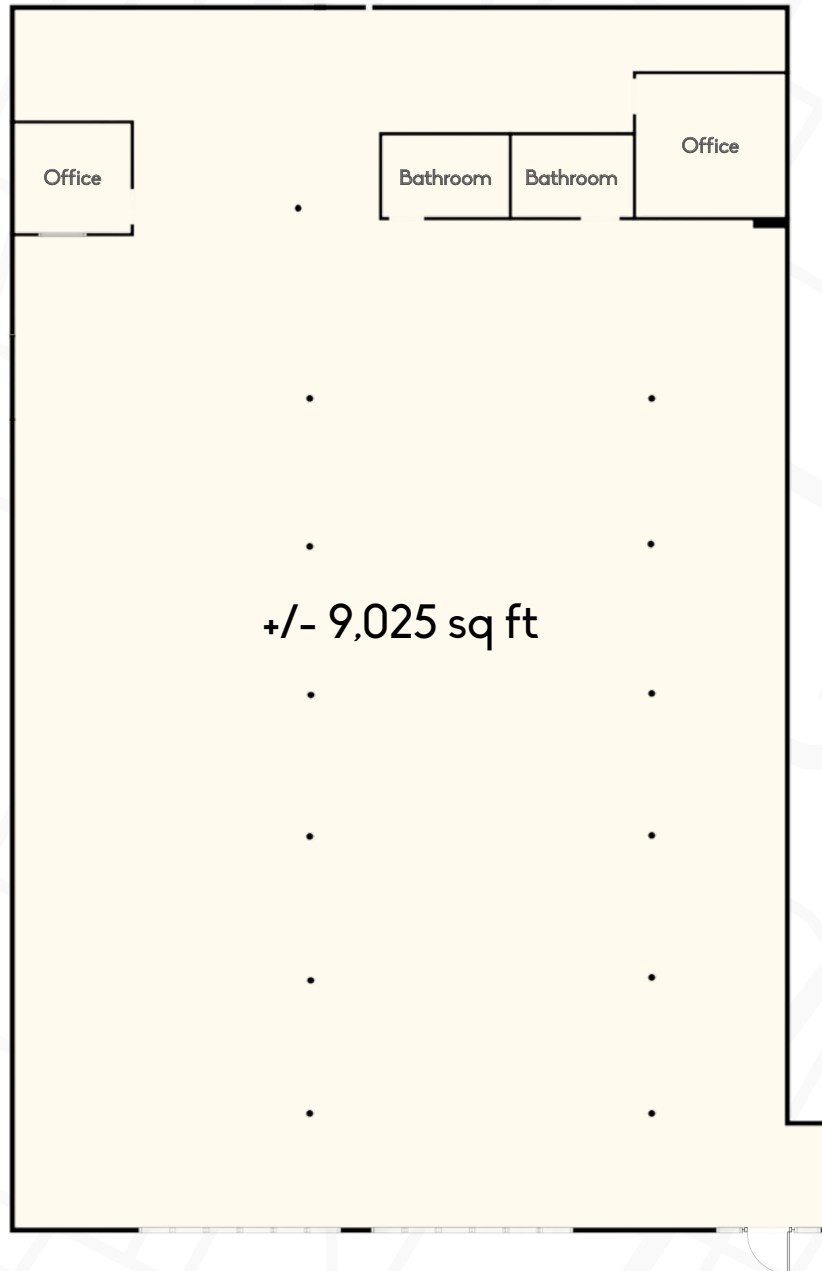
Suite #	Available Sq Feet
Suite 536	+/- 9,025 sq ft
Suite 540	+/- 4,850 sq ft

FOR LEASE: PLAZA AT ANDOVER

524-640 N Andover Rd, Andover, KS 67002



Plaza at Andover Suite 536



PARKING LOT

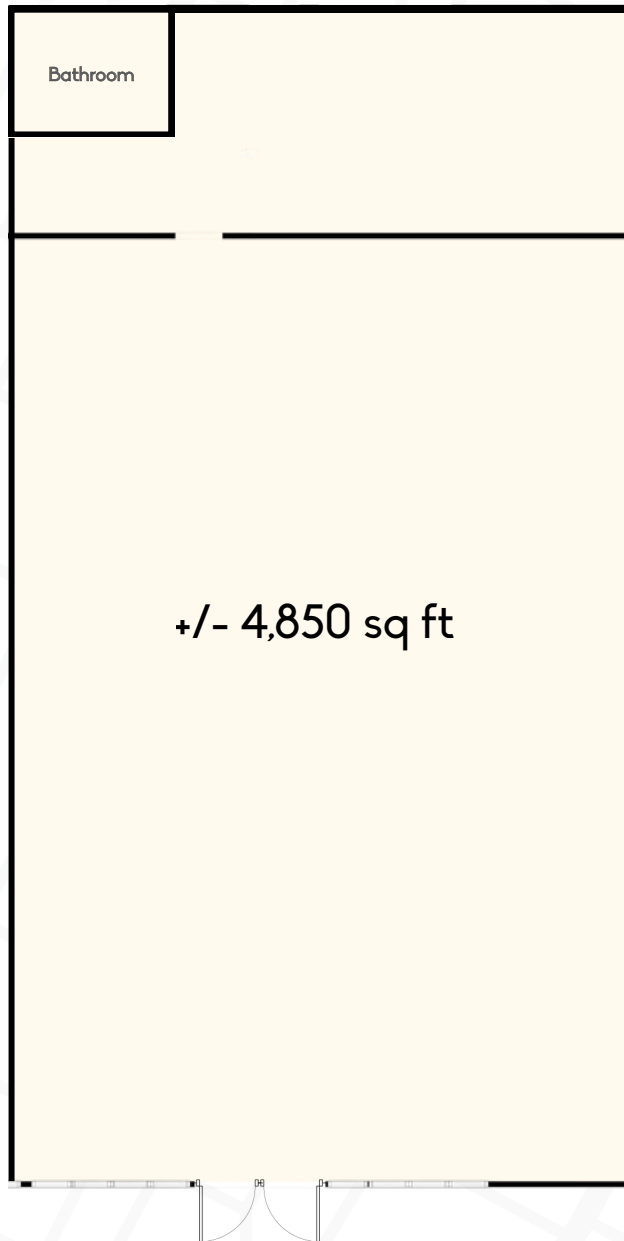


FOR LEASE: PLAZA AT ANDOVER

524-640 N Andover Rd, Andover, KS 67002



Plaza at Andover Suite 540



PARKING LOT



FOR LEASE: PLAZA AT ANDOVER

524-640 N Andover Rd, Andover, KS 67002



AREA DETAILS



INTERSECTION
TRAFFIC COUNT

21,068



POPULATION
(5 MILES)

50,236



TOTAL EMPLOYED
(5 MILES)

26,880



MEDIAN AGE
(5 MILES)

38.6



AVERAGE HH
INCOME (5 MILES)

\$152,152