



### Land & Development in NE8

Askew Road West, Gateshead, Tyne and Wear, NE8 2PB

**£90,000** Starting Bid

Tenure

**Freehold**

Allocated parking

### Property features

- ✓ Land Site For Sale
- ✓ Approx 0.201 acres (813sqm)
- ✓ Freehold Title

## Arrange a viewing

Commercial North East

---

0191 737 1154  
commercial@pattinson.co.uk

---

- ✓ Flexible viewing slots
- ✓ Accompanied viewings

## Description

\*For sale via secure sale online bidding: terms and conditions apply.\*

We are pleased to offer to auction this piece of land measuring 0.201 acres on the popular Askew Road, well located for all local transport links to the north and south of the region.

Please note we have not inspected this site.

Price: Starting Bid £90,000

Property Type: Land & Development

Business Type: B & B's

Internal Size: 8756 Square Feet

External Size: 8756 Square Feet

Parking: Allocated

## **Location**

The subject site is located along Askew Road, Gateshead. Well located for all local transport links to the north and south of the region. It is a short drive away from local amenities and the Metrocentre.

---

## **Site Details**

The subject site measures approximately 0.201 acres (813.41814sqm) with a perimeter of roughly 121.9m.

Measurements via Promap.

---

## **Tenure**

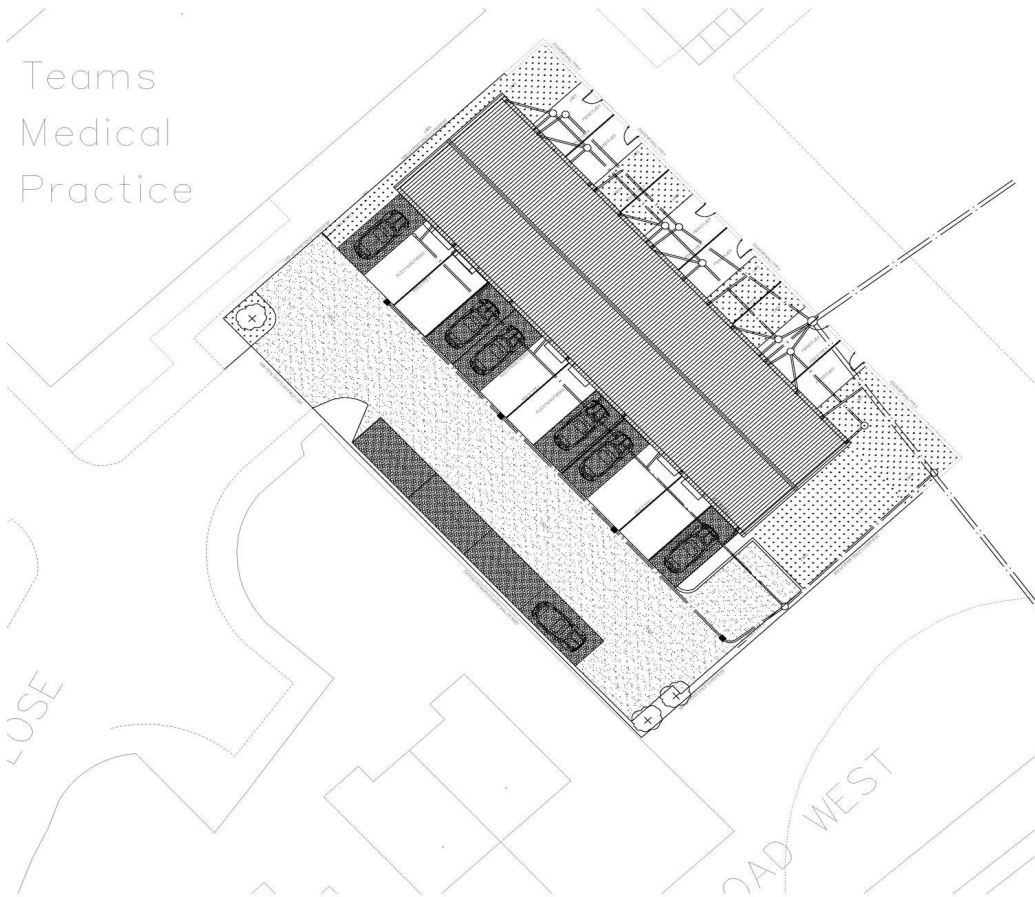
Freehold: Title number TY287300.

---

## **Additional Information**

For further information please contact our office direct on 0191 737 1154, or alternatively via e-mail on [commercial@pattinson.co.uk](mailto:commercial@pattinson.co.uk). With regards to viewing the subject property, this is to be done strictly by appointment through Keith Pattinson Commercial department. Please contact us to arrange an internal inspection, or to register your interest.

Teams  
Medical  
Practice



**Landscape Proposal**

Hedge row to the site boundary along the north west and south east boundary.  
 Species: Hawthorn, Field Maple Dog Rose and Yew Taxus Baccata  
 Two plants per metre will be installed along the boundary to form an unbroken feature once grown.  
 Initially shrub guards will be fitted to prevent damage from mowers along with support for each specimen.  
 The 3yr new trees proposed to replace the 1 existing will enhance the site in terms of biodiversity.  
 Species will include a mixture of: Bird Cherry Prunus Padus, Wild service Sorbus Tormentalis and Wild Cherry Prunus Avium.  
 Lighting incorporated within the proposed development will be sensitively designed to minimise disturbance to foraging.  
 Six bat boxes will be installed to the west facade of the terrace at a minimum height of 4 metres.  
 The bat boxes will be Swchelegier IFR Bat Tubes.  
 Six bird boxes will be fitted to the east facade of the terrace with differing sizes at various heights.  
 Bird boxes will be a mixture of 3yr Schwegler No17 swift boxes and 3yr Vivara Sparrow Nest boxes.  
 Lawn areas to rear of properties with gated access and proposed wall to encapsulate the garden.  
 Block paved drives for each dwelling to the front elevation will provide adequate parking for the development.  
 Tarmac or equivalent access road to the development to be built to adoptable standards with sufficient lux levels as set out by Gateshead Council Highway Authority and turning circle to the south east corner of the site as required for movement.  
 Refuse storage to rear of properties in garden area.

Plant	Quantity

Askew Road West, Gateshead, Tyne and Wear, NE8 2PB

Contact your local branch today for more information on this property:

**Mercantile House Kingfisher Way, Silverlink Business Park, Wallsend, Wallsend, NE28 9NY,  
 commercial@pattinson.co.uk , www.pattinson.co.uk**

These particulars, whilst believed to be accurate are set out as a general outline only for guidance and do not constitute any part of an offer or contract. Intending purchasers should not rely on them as statements of representation of fact, but must satisfy themselves by inspection or otherwise as to their accuracy. No person in this firms employment has the authority to make or give any representation or warranty in respect of the property.

