



FOR LEASE

## FREESTANDING SINGLE LEVEL BUILDING 649 OLD CLAIRTON ROAD

Pittsburgh, PA 15236

- 11,372 sq. ft. former grocery store available for lease
- Located along Old Clairton Road which and is in the middle of a high density area with excellent demographics
- Pitched ceiling height 11' to 16'4" clear
- 11,650 cars pass per day on Old Clairton Road
- Two loading docks (one ground level, one elevated), three walk in refrigerators, one walk in freezer
- 43 parking spaces



### 2025 Demographics

	1 mile	3 miles	5 miles
population	9,894	50,987	160,842
average hh income	\$141,666	4123,177	\$106,967
households	3,943	20,459	69,367
daytime population	8,655	49,939	132,450
average home value	\$365,379	\$322,035	\$285,888

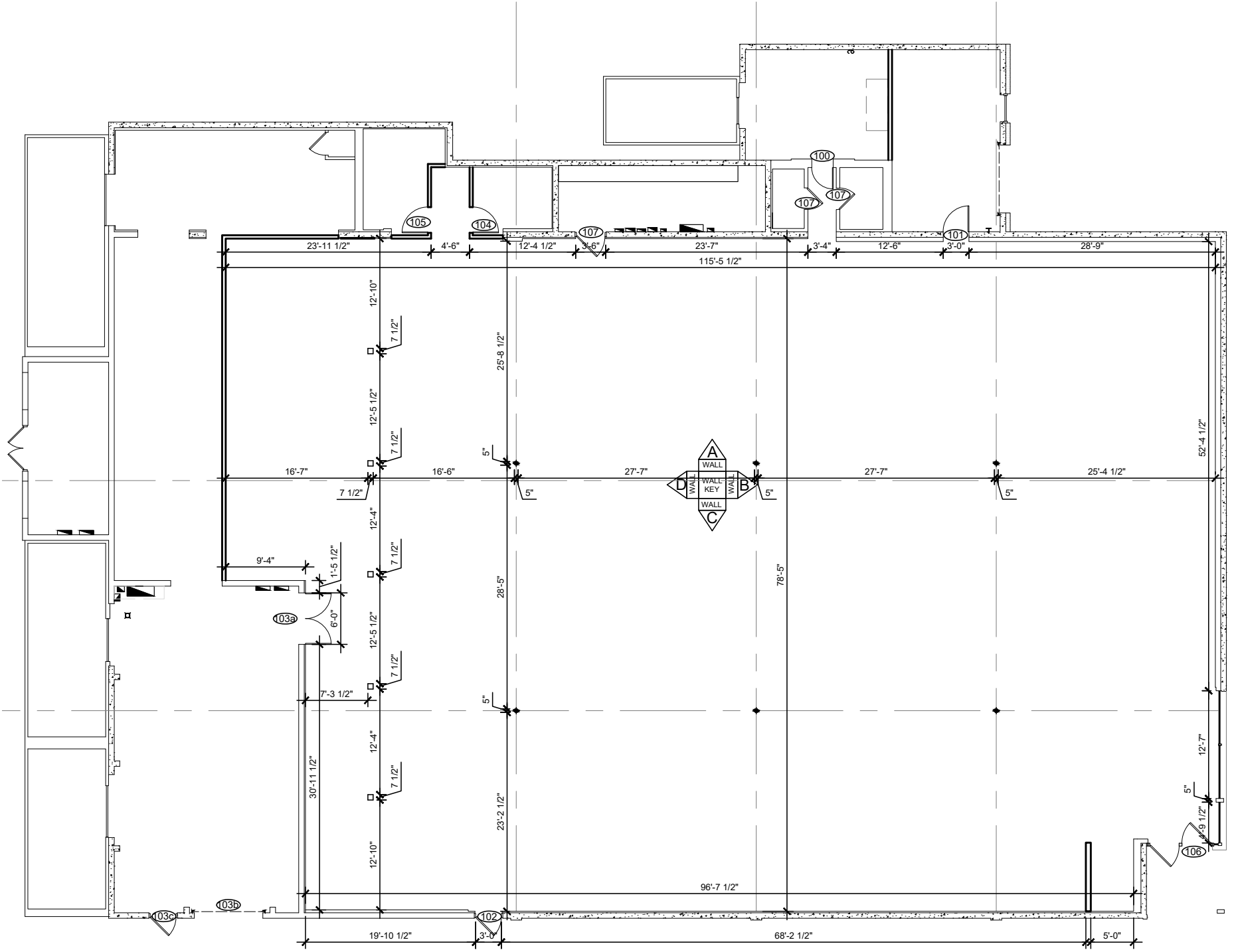
**TOMMY MCCAFFERTY**  
tommy@legacyrealtypgh.com

412.866.LGCY (5429) LEGACYREALTYPGH.COM

**MIKAYLA MUCCI**  
mikayla@legacyrealtypgh.com

**LEGACY**  
REALTY PARTNERS

# FLOOR PLAN





© 2025 Legacy Realty Partners. All rights reserved. The information provided has been obtained from sources deemed reliable but has not been verified for accuracy or completeness. It is recommended that you conduct a thorough, independent investigation of the property and verify all details. Any reliance on this information is at your own risk. Legacy Realty Partners and the Legacy Realty Partners logo are trademarks of Legacy Realty Partners, Inc. All other trademarks displayed in this document belong to their respective owners, and the use of these logos does not imply any affiliation with or endorsement by Legacy Realty Partners. The photos contained herein are the property of their respective owners. Unauthorized use of these images is prohibited without the explicit written consent of the owner.

# LEGACY

REALTY PARTNERS