



FOR SUBLEASE

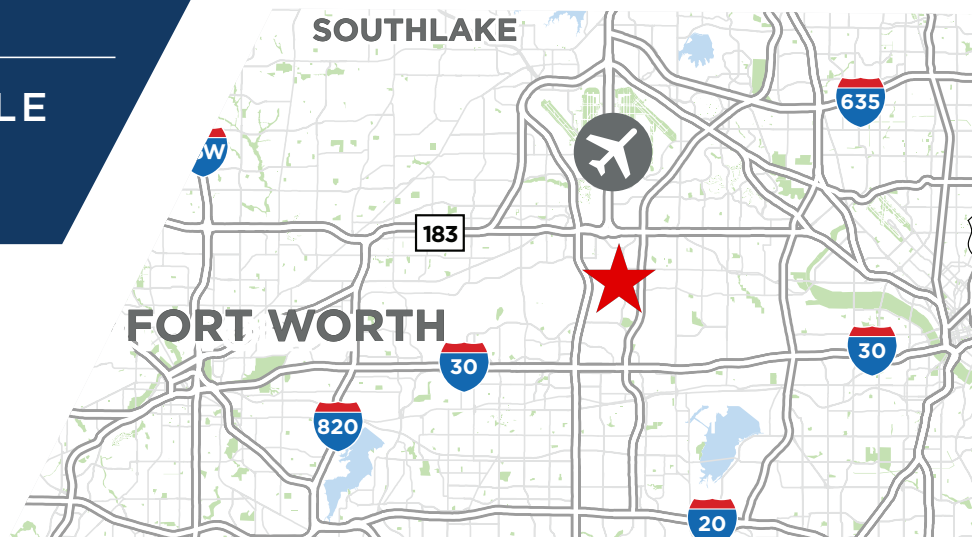
3405 ROY ORR BLVD

Grand Prairie, TX 75050

28,200 SF AVAILABLE

Property Highlights

- 28,200 SF
- Offices and Restrooms
- Five (5) Dock High doors with pit levelers
- One (1) Dock Platform with Oversized Door (14' x 14')
- ESFR Sprinkler System
 - 24' Clear Height
- Ideal for Short-Term and/or Dead Storage Uses



David Eseke, SIOR

Vice Chairman
+1 972 663 9852
david.eseke@cushwake.com

Clay Balch, SIOR

Executive Director
+1 972 663 9853
clay.balch@cushwake.com

2021 McKinney, Suite 900
Dallas, TX 75201
main +1 972 663 9600
cushmanwakefield.com

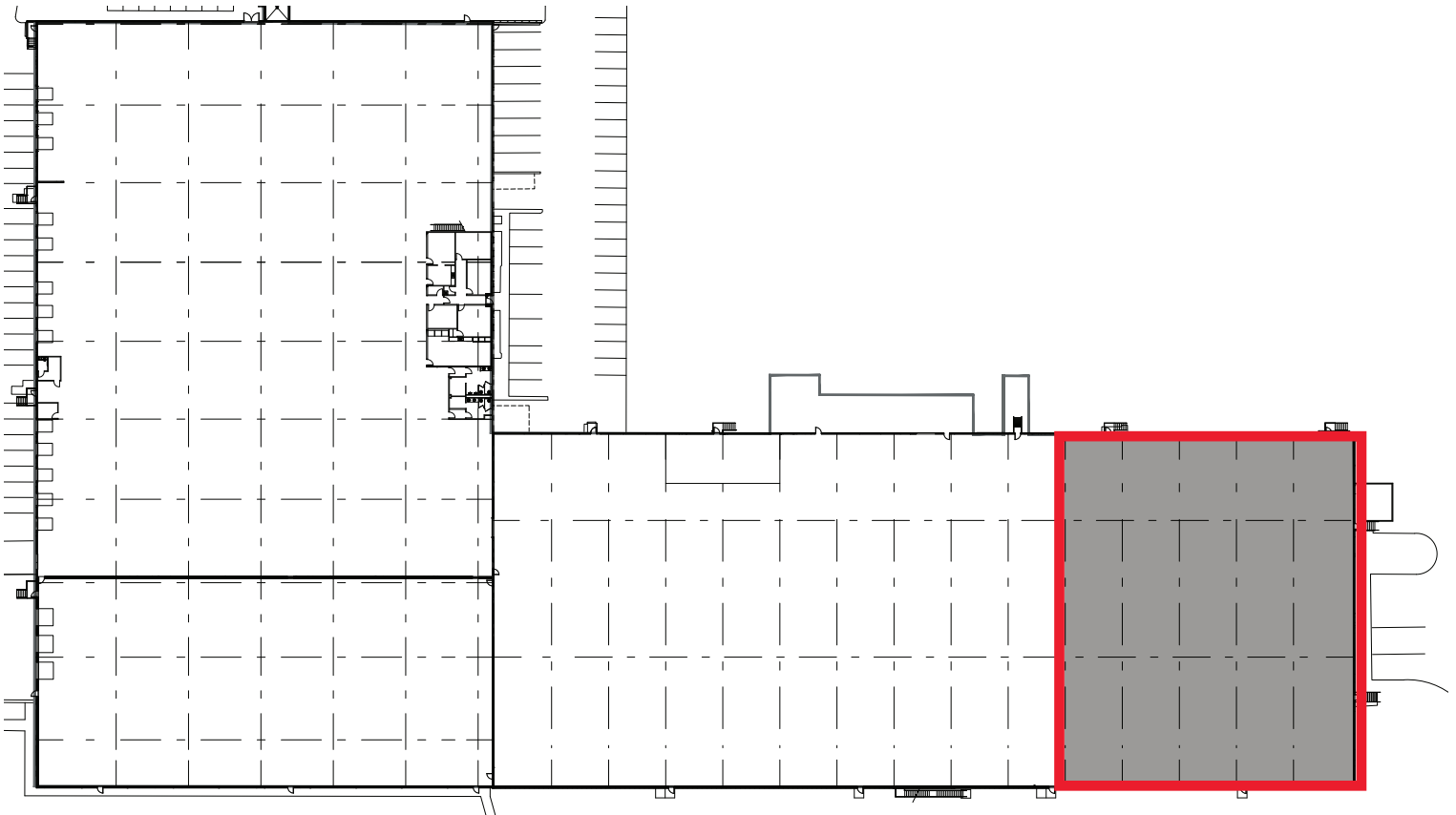
FOR SUBLEASE



3405 ROY ORR BLVD
Grand Prairie, Texas

28,200 SF AVAILABLE

SITE PLAN



SUBLEASE PREMISES

28,200 SF

David Eseke, SIOR
Vice Chairman
+1 972 663 9852
david.eseke@cushwake.com

Clay Balch, SIOR
Executive Director
+1 972 663 9853
clay.balch@cushwake.com

2021 McKinney, Suite 900
Dallas, TX 75201
main +1 972 663 9600
cushmanwakefield.com

©2025 Cushman & Wakefield. All rights reserved. The information contained in this communication is strictly confidential. This information has been obtained from sources believed to be reliable but has not been verified. NO WARRANTY OR REPRESENTATION, EXPRESS OR IMPLIED, IS MADE AS TO THE CONDITION OF THE PROPERTY (OR PROPERTIES) REFERENCED HEREIN OR AS TO THE ACCURACY OR COMPLETENESS OF THE INFORMATION CONTAINED HEREIN, AND SAME IS SUBMITTED SUBJECT TO ERRORS, OMISSIONS, CHANGE OF PRICE, RENTAL OR OTHER CONDITIONS, WITHDRAWAL WITHOUT NOTICE, AND TO ANY SPECIAL LISTING CONDITIONS IMPOSED BY THE PROPERTY OWNER(S). ANY PROJECTIONS, OPINIONS OR ESTIMATES ARE SUBJECT TO UN-CERTAINTY AND DO NOT SIGNIFY CURRENT OR FUTURE PROPERTY PERFORMANCE

FOR SUBLEASE

3405 ROY ORR BLVD
Grand Prairie, Texas

28,200 SF AVAILABLE



PROPERTY PHOTOS



David Eseke, SIOR
Vice Chairman
+1 972 663 9852
david.eseke@cushwake.com

Clay Balch, SIOR
Executive Director
+1 972 663 9853
clay.balch@cushwake.com

2021 McKinney, Suite 900
Dallas, TX 75201
main +1 972 663 9600
cushmanwakefield.com