

WESTPARK PLAZA - 13800 BUILDING 13800 24TH AVE N, PLYMOUTH, MN 55441



PROPERTY DESCRIPTION

- * 8,170 SF of industrial / showroom space
- * 3 dock doors
- * Approximately 1,900 SF office - \$14.00 PSF
- * Approximately 6,270 SF warehouse - \$7.00 PSF
- * 16' clear height
- * Prime location at the southeast corner of 494 and Highway 55
- * Available upon 30 days notice
- * Locally owned and managed

OFFERING SUMMARY

Lease Rate:	\$7 - 14 SF/yr (NNN)
Available SF:	8,170 SF
2026 Est Tax & CAM:	\$6.51 PSF
Building Size:	21,782 SF

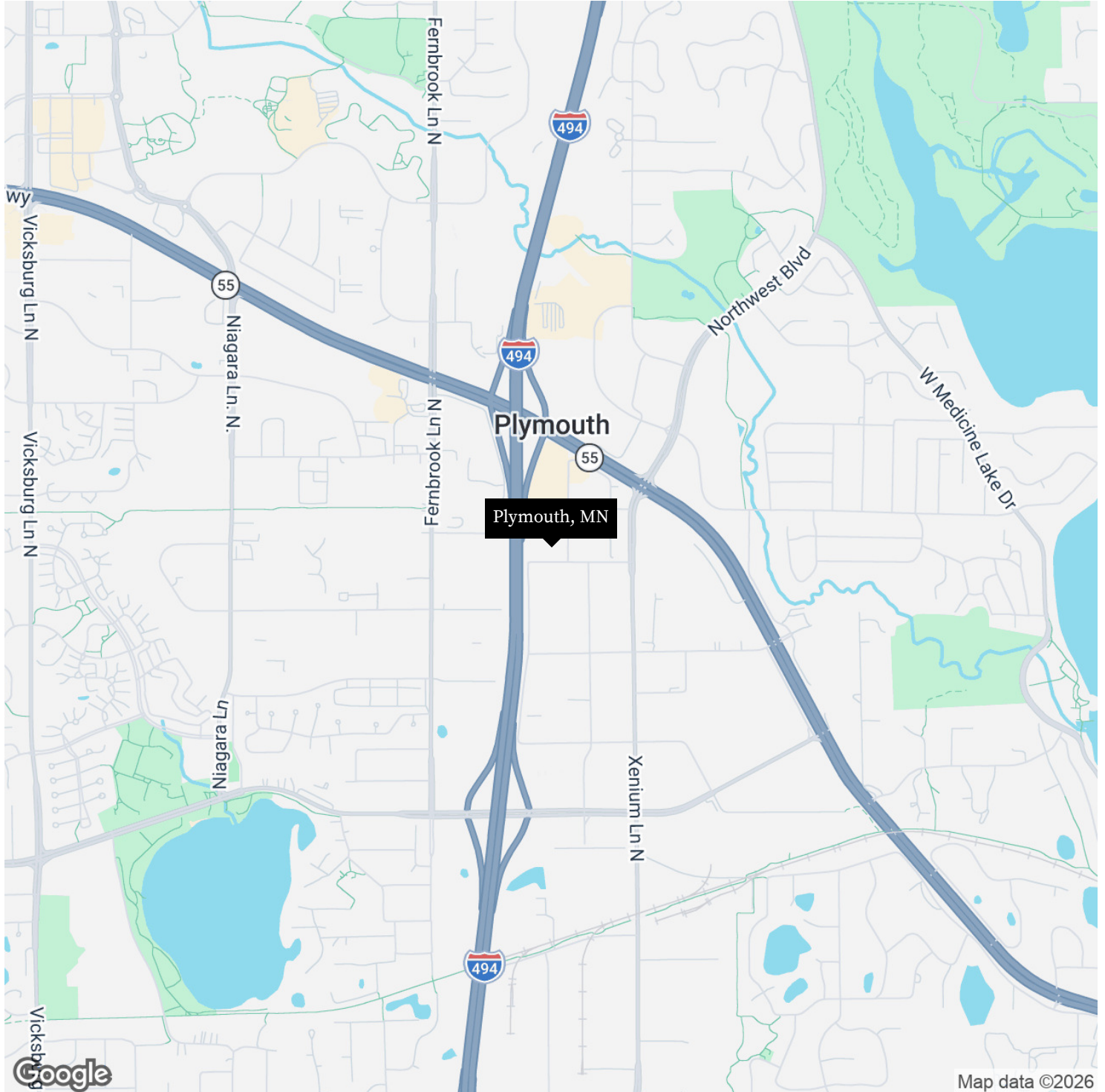
BARRY BIRNBERG

952.820.1673

barry.birnberg@northcocommercial.com

The information above has been obtained from services we believe to be reliable, however, we accept no responsibility for its correctness.

WESTPARK PLAZA - 13800 BUILDING
13800 24TH AVE N, PLYMOUTH, MN 55441



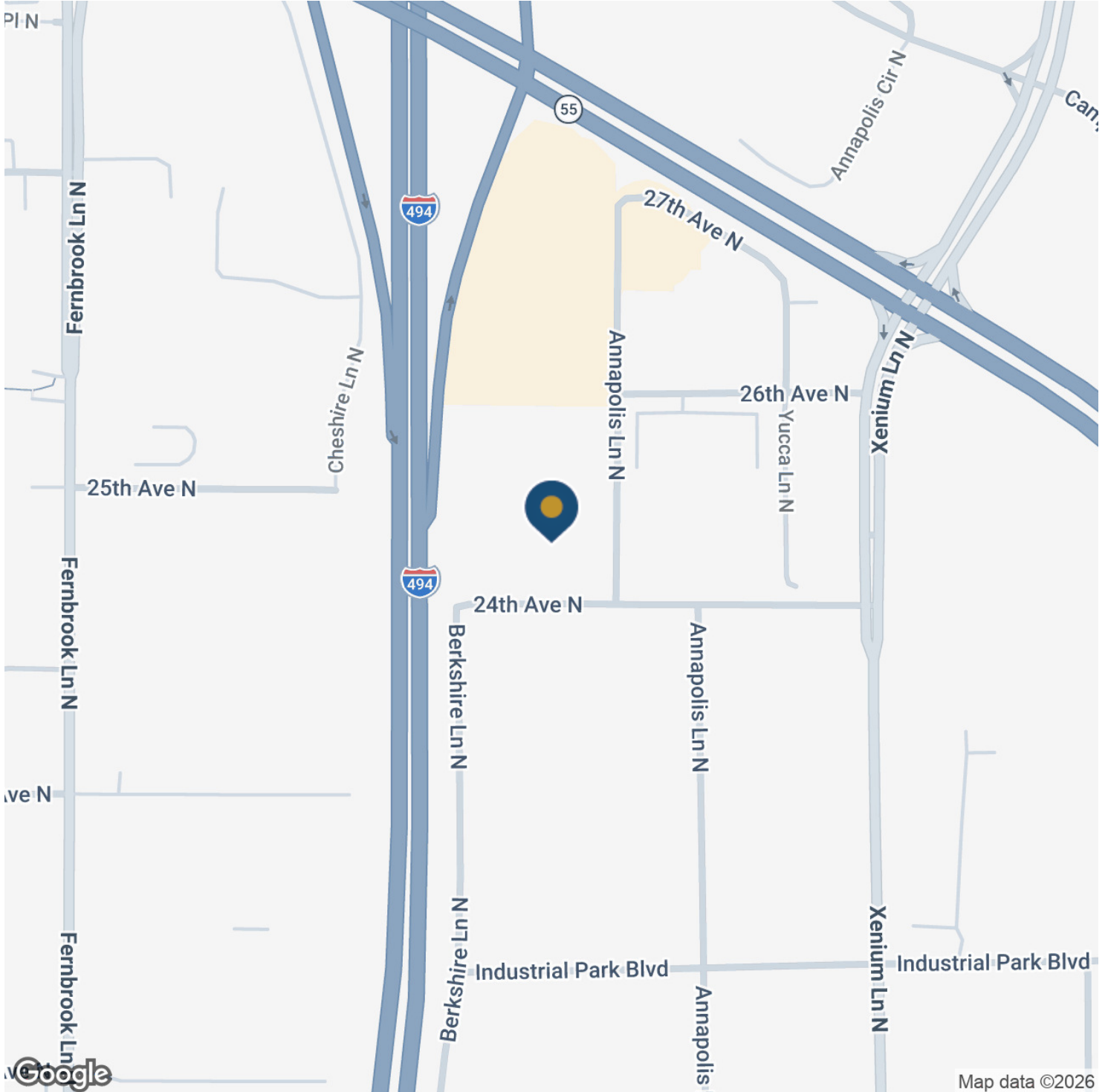
BARRY BIRNBERG

952.820.1673

barry.birnberg@northcocommercial.com

The information above has been obtained from services we believe to be reliable, however, we accept no responsibility for its correctness.

WESTPARK PLAZA - 13800 BUILDING
13800 24TH AVE N, PLYMOUTH, MN 55441



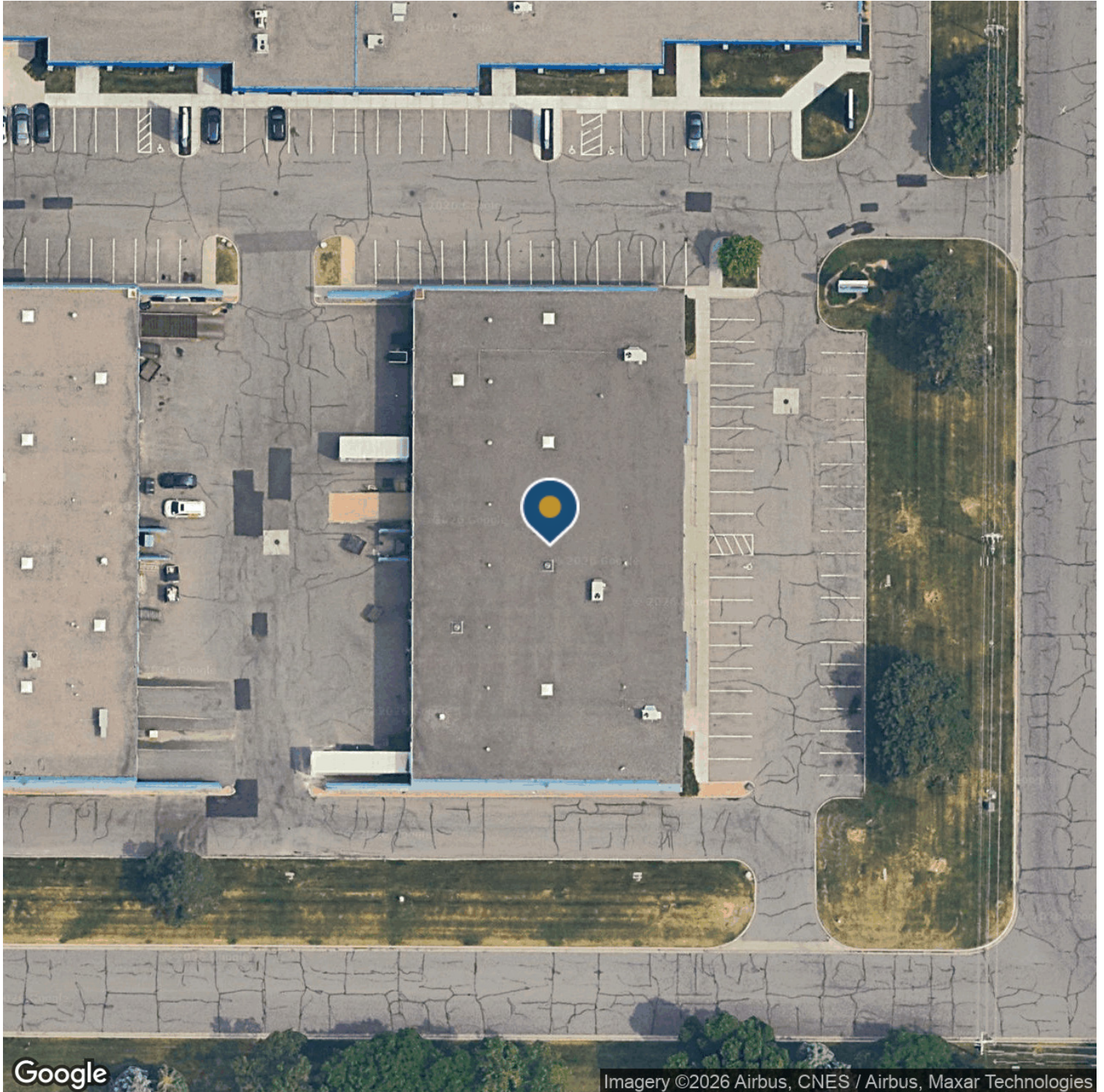
BARRY BIRNBERG

952.820.1673

barry.birnberg@northcocommercial.com

The information above has been obtained from services we believe to be reliable, however, we accept no responsibility for its correctness.

WESTPARK PLAZA - 13800 BUILDING
13800 24TH AVE N, PLYMOUTH, MN 55441



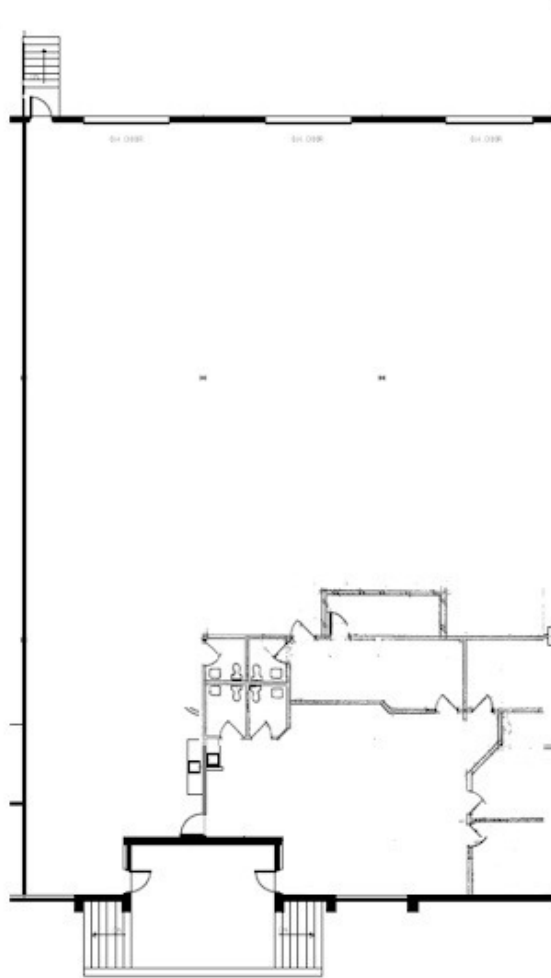
BARRY BIRNBERG

952.820.1673

barry.birnberg@northcocommercial.com

The information above has been obtained from services we believe to be reliable, however, we accept no responsibility for its correctness.

WESTPARK PLAZA - 13800 BUILDING
13800 24TH AVE N, PLYMOUTH, MN 55441



Suite 350
8,170 RSF

360° VIRTUAL TOUR

(NOT TO SCALE)

BARRY BIRNBERG

952.820.1673

barry.birnberg@northcocommercial.com

SUITE 350 - 8,170 SF

The information above has been obtained from services we believe to be reliable, however, we accept no responsibility for its correctness.