



WYNDHAM PARK

WYNDHAM PARK AT NUCKOLS RD | GLEN ALLEN, VA

FEATURES

- **17.41 Acres of Prime Land For Sale.**
- Located across from the entrance to *Wyndham* with access to signal at Wyndham Park and Nuckols Rd.
- Just over 1 mile away from *Nuckols Place Shopping Center*.
- Conveniently located near Short Pump Mall, I-295 and I-64.
- Development opportunity for Condos, Townhomes, Single Family homes and Assisted Living.
- Average median income over \$192,000 in a 1-mile radius.
- Zoned: A-1.

SPACE TYPE	Land for Sale
AVAILABLE SPACE	17.41 Acres
ASKING PRICE	\$5,000,000

DEMOGRAPHICS	1 Mile	3 Mile	5 Mile
2022 Population	10,000	36,716	99,532
Avg HH Income	\$192,804	\$176,222	\$139,535
Daytime Employment	1,284	24,336	49,763
Traffic Count	24,568 VPD Nuckols Road 8,581 VPD Nuckols & Wyndham Park		

* Detailed demographics upon request



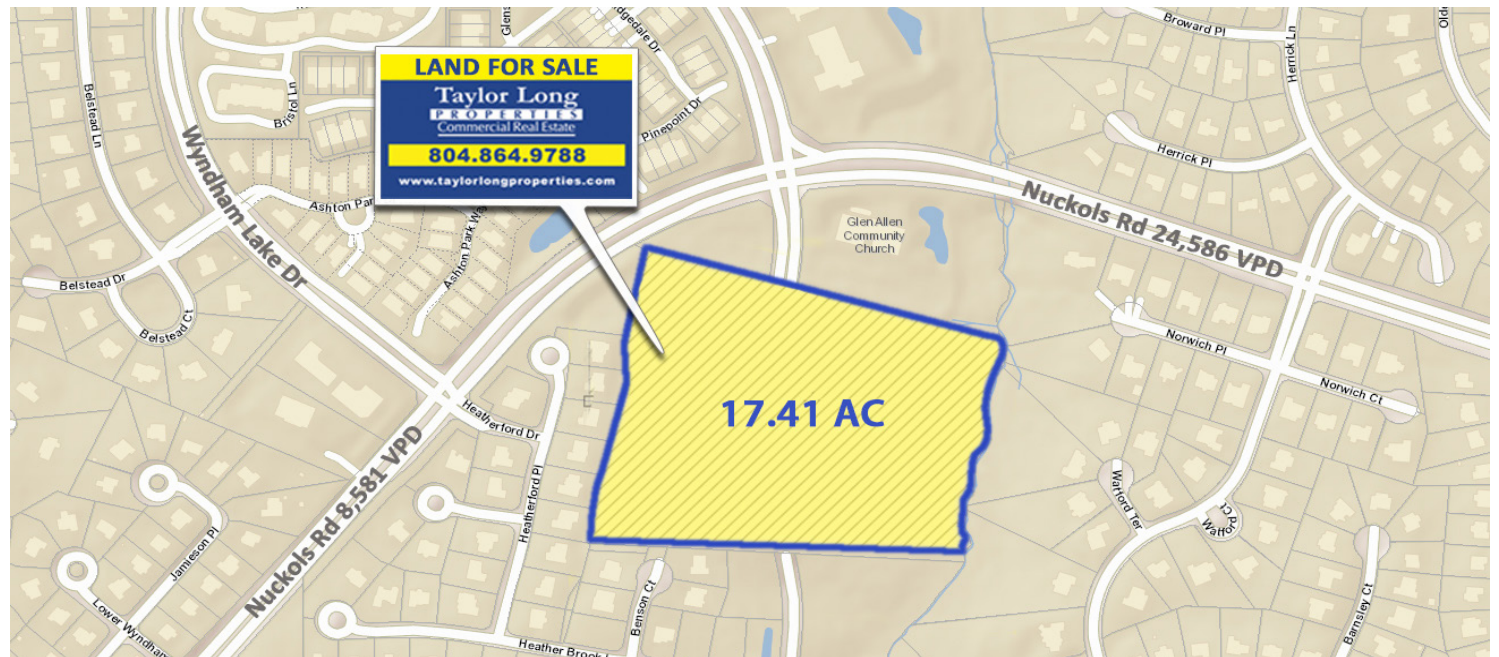
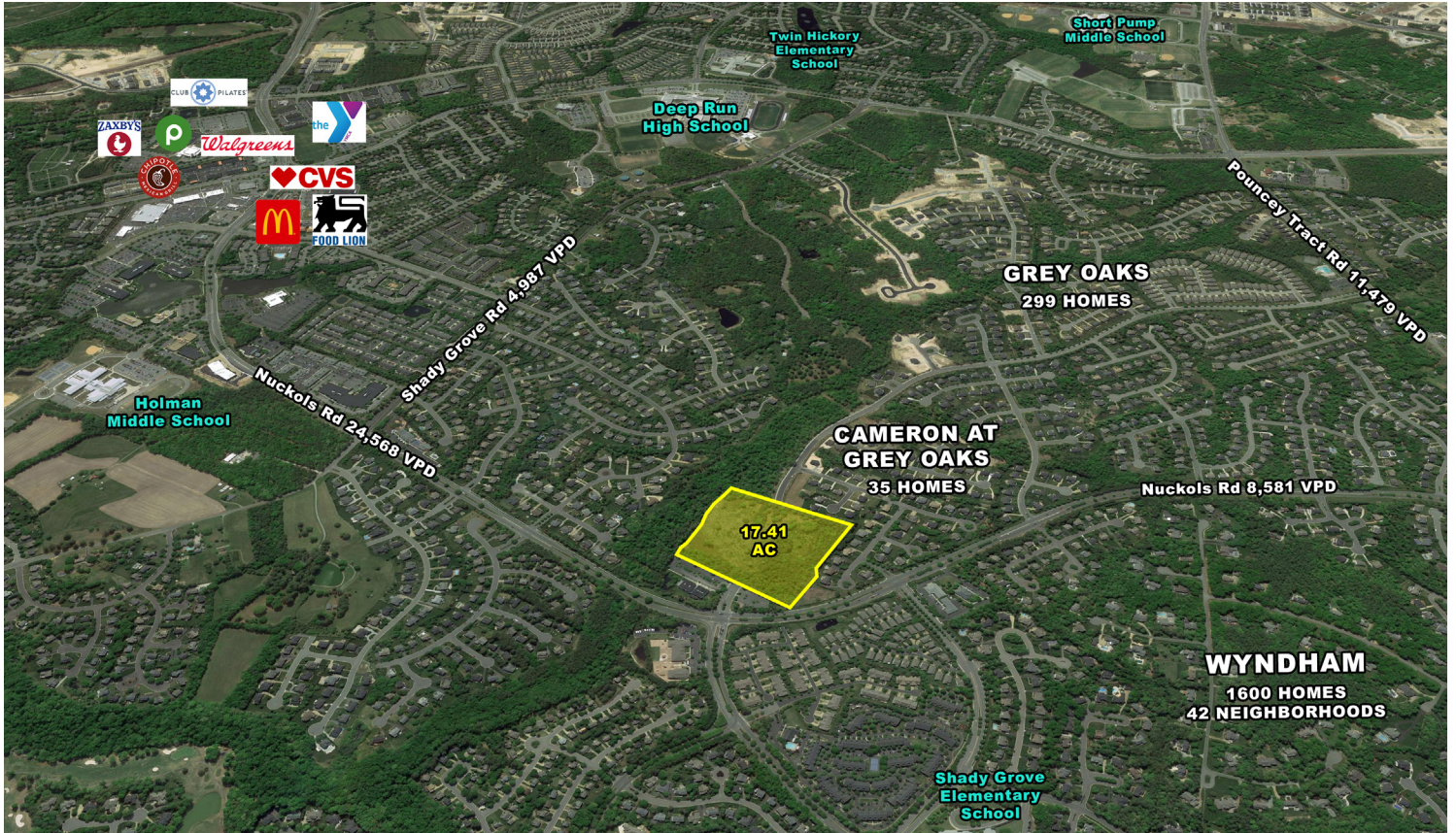
Ellen Long: 804.864.9788 ext. 101 | 804.539.7793 (m)
 ellenlong@taylorlongproperties.com

Robert Marshall: 804.864.9788 ext. 102 | 804-437-4323 (m)
 robertmarshall@taylorlongproperties.com

CoStar
POWERBROKER **Taylor Long**
 Top Broker Award **PROPERTIES**
RETAIL BROKERS NETWORK Commercial Real Estate



AERIAL





AERIAL

