



**FOR LEASE**  
**OFFICE SPACE**

**401 CHURCH STREET & 159 4TH AVE FLOOR PLANS**

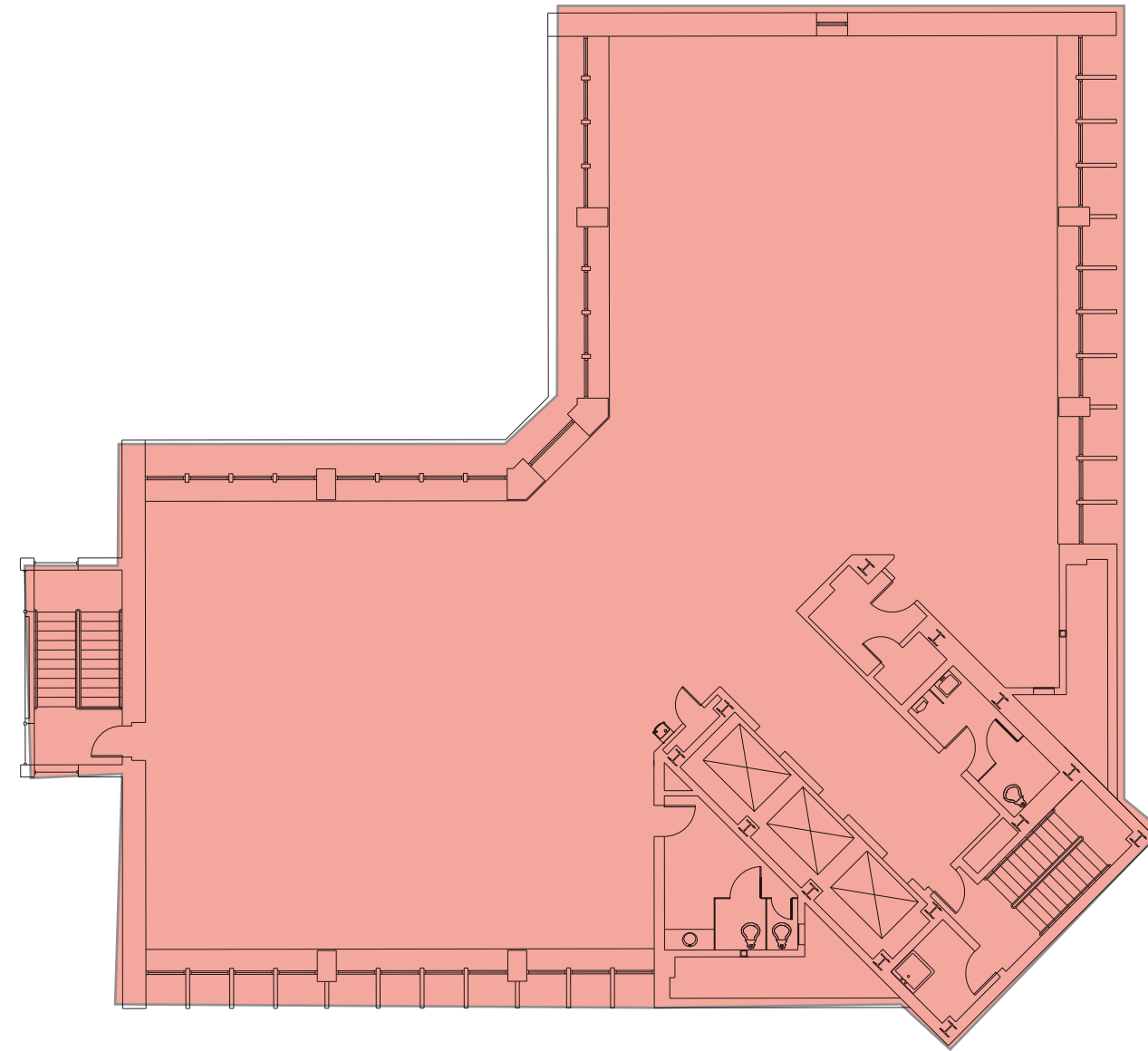


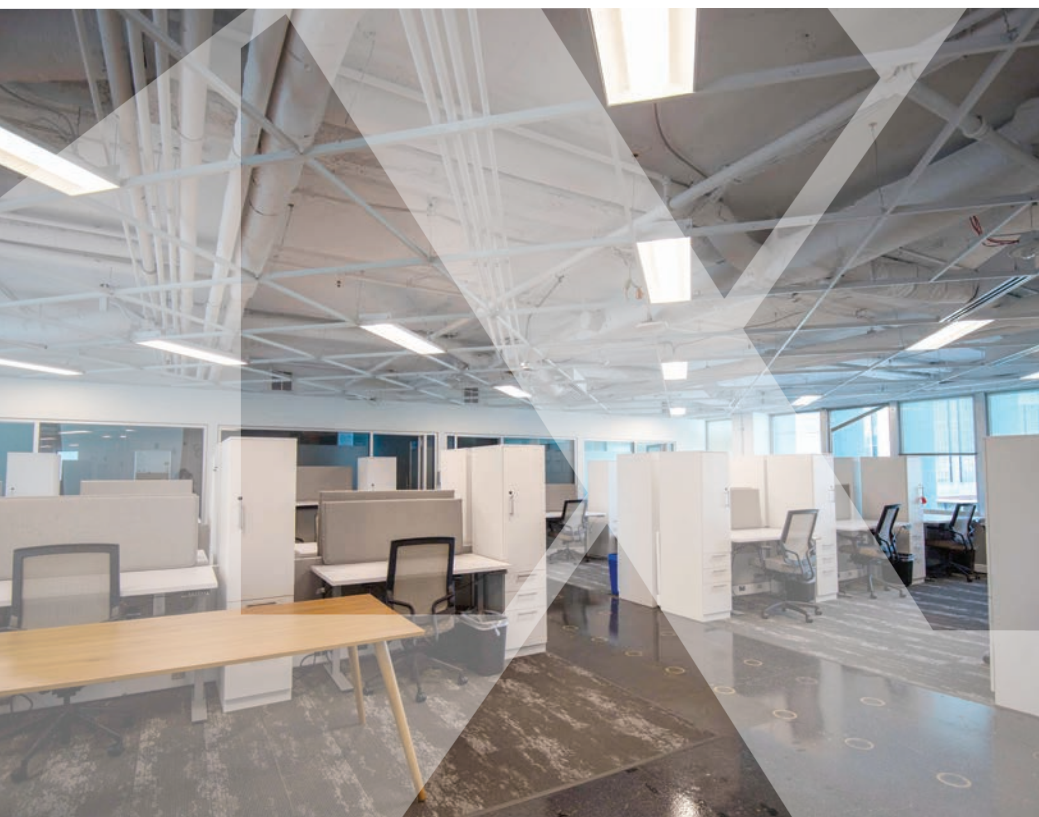


**SUITE 2900**

**6,014 SF**

**AVAILABLE NOW**

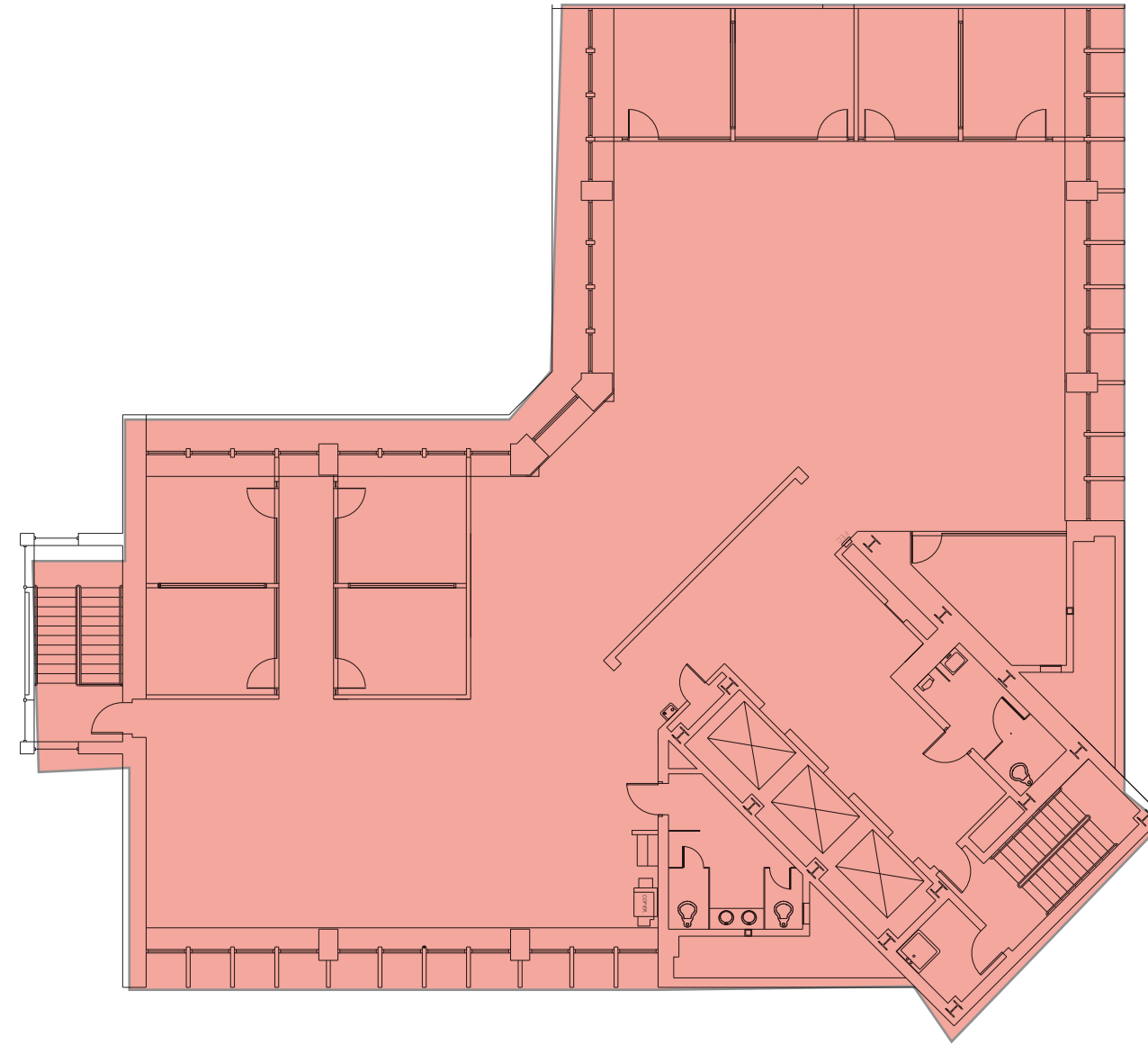


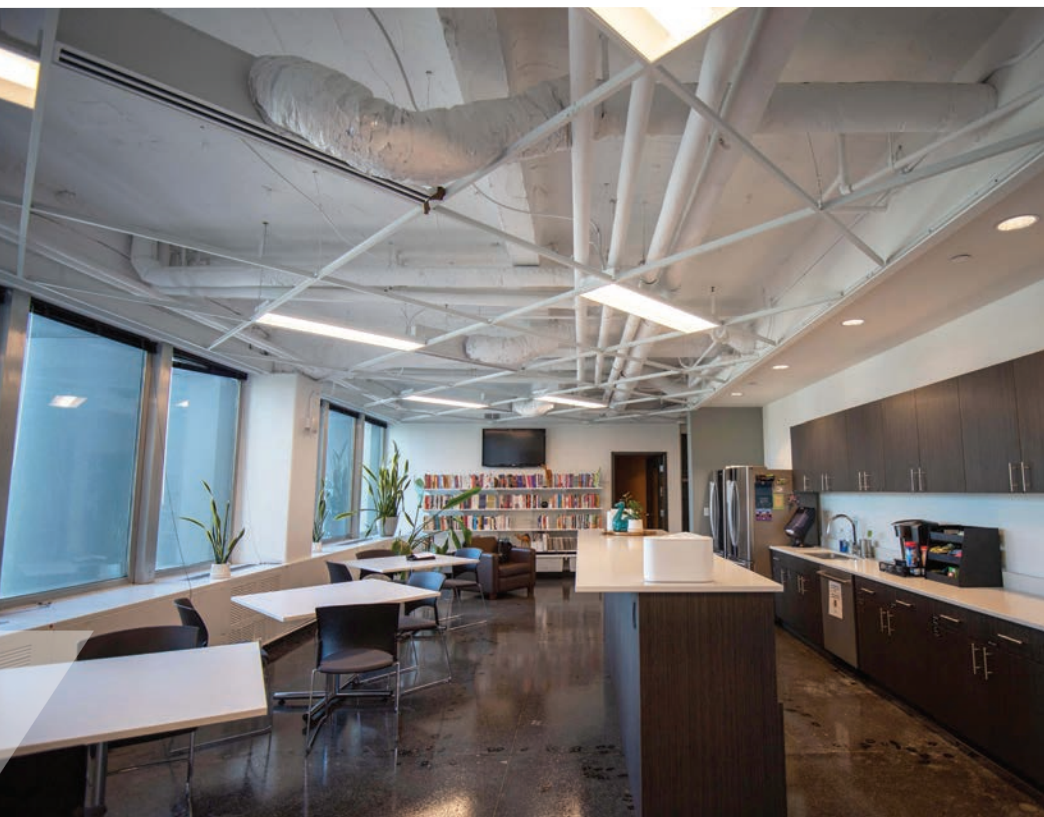
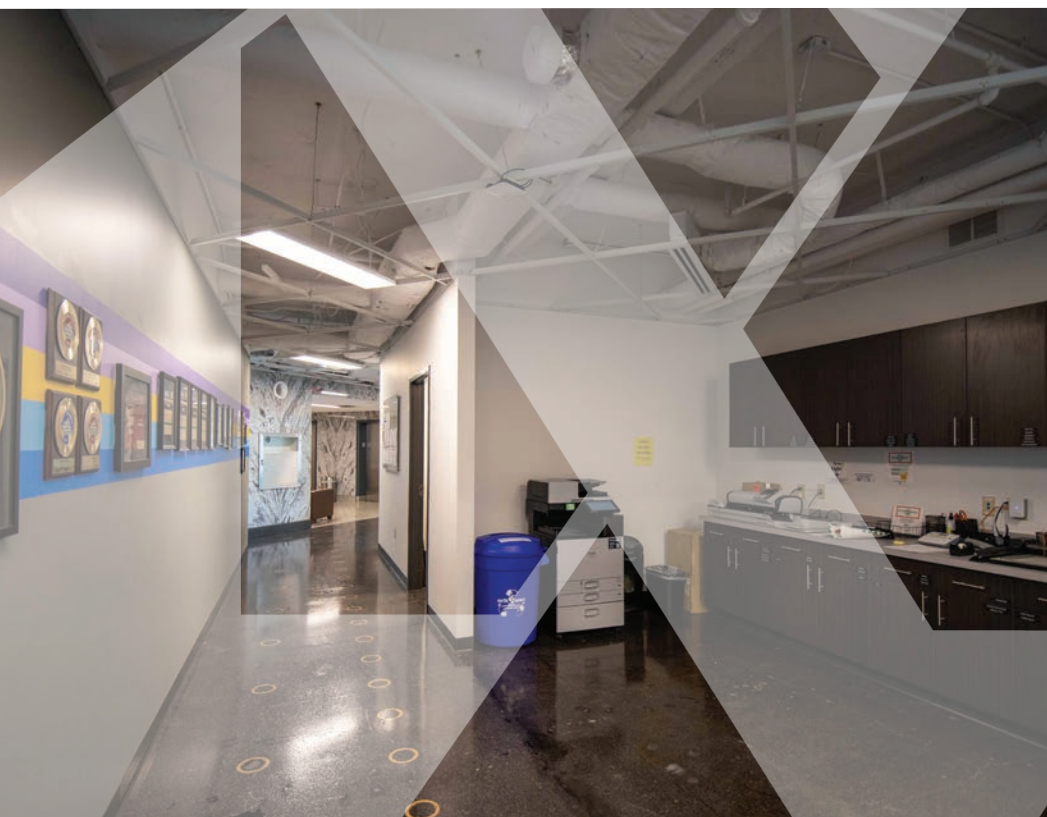


**SUITE 2500**

**6,014 SF**

**AVAILABLE NOW**

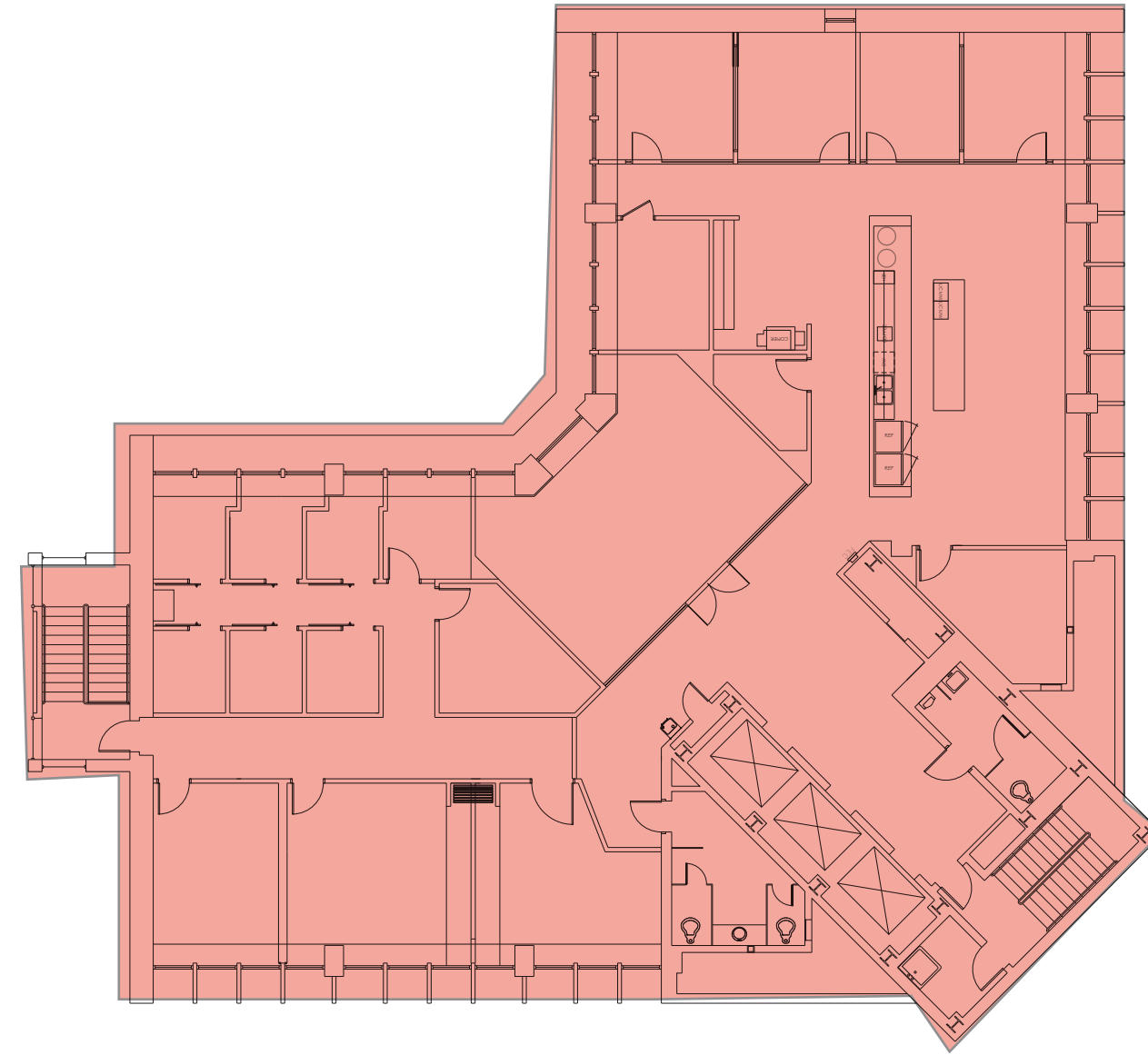




**SUITE 2400**

**6,014 SF**

**AVAILABLE NOW**

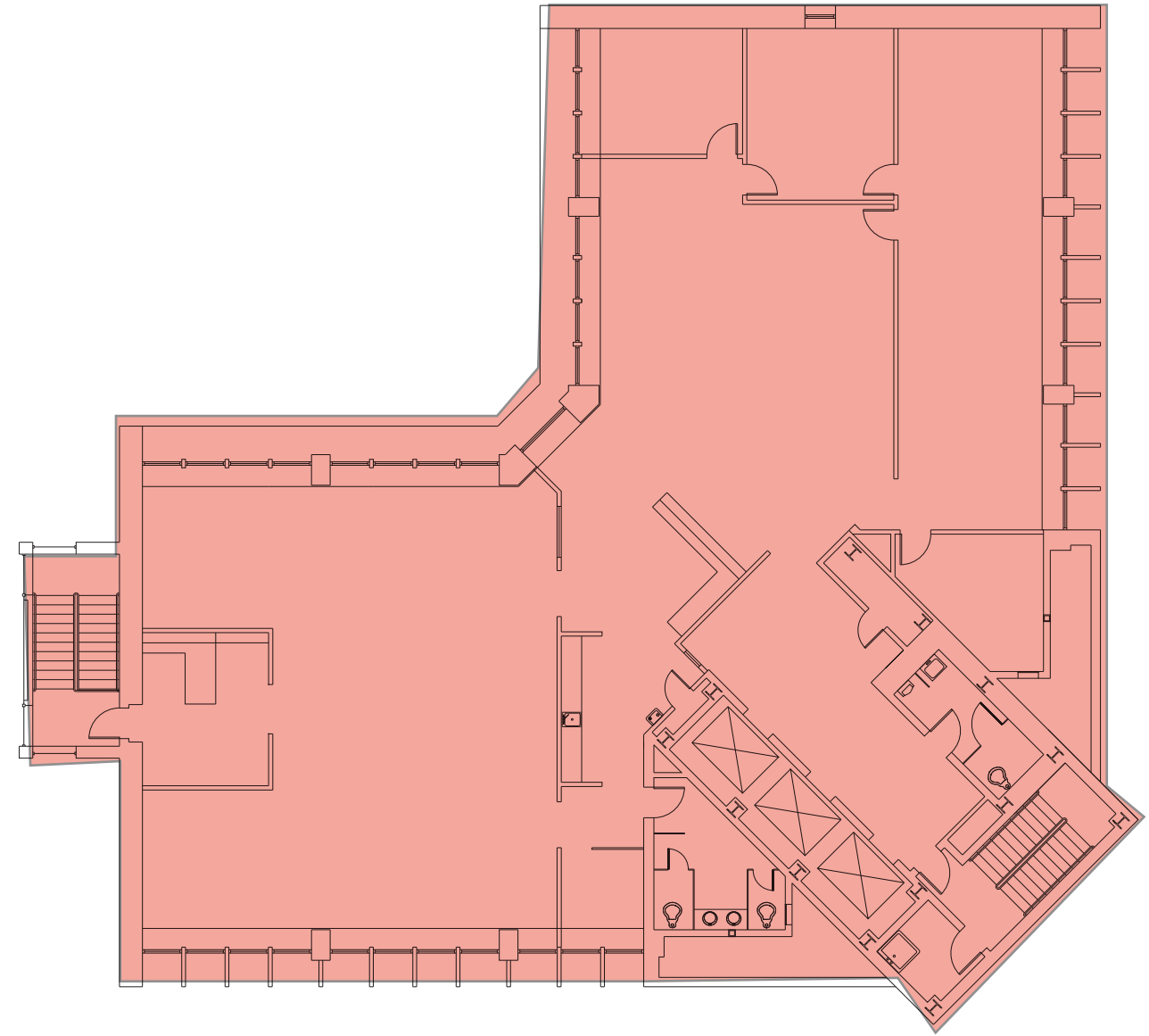




**SUITE 2100**

**6,014 SF**

**AVAILABLE NOW**

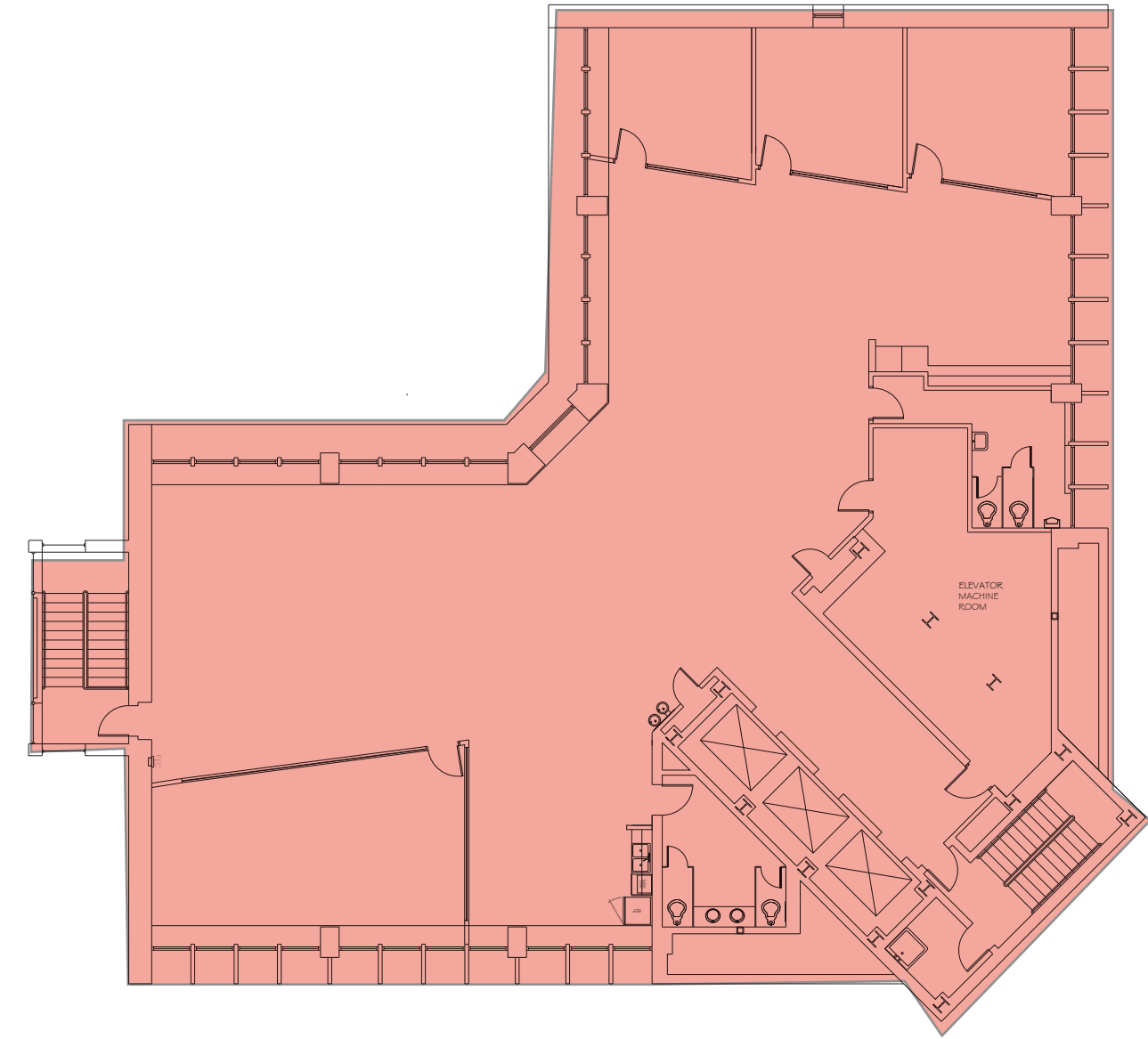




**SUITE 1900**

**6,014 SF**

**AVAILABLE NOW**

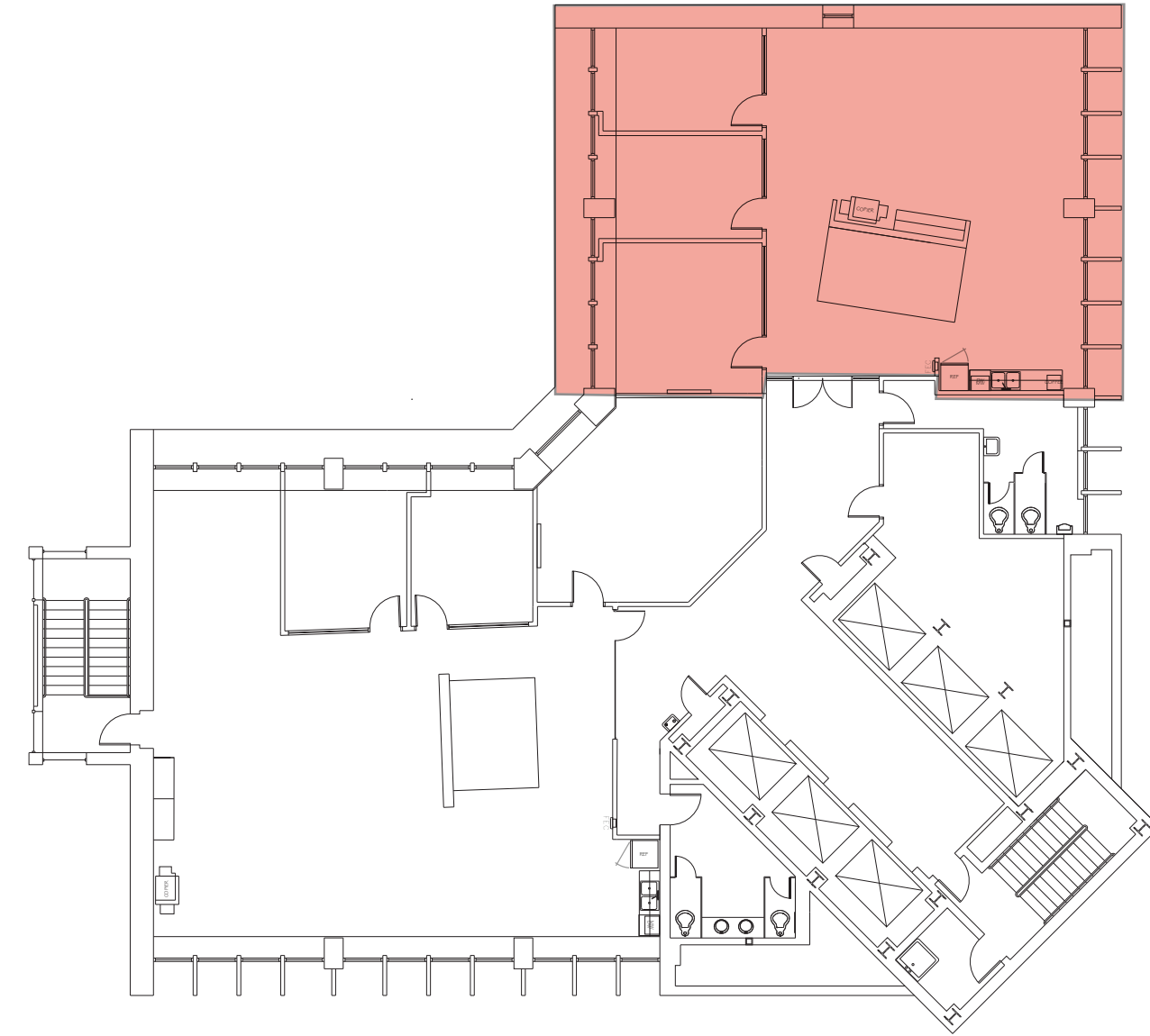




**SUITE 1801**

**2,303 SF**

**AVAILABLE NOW**

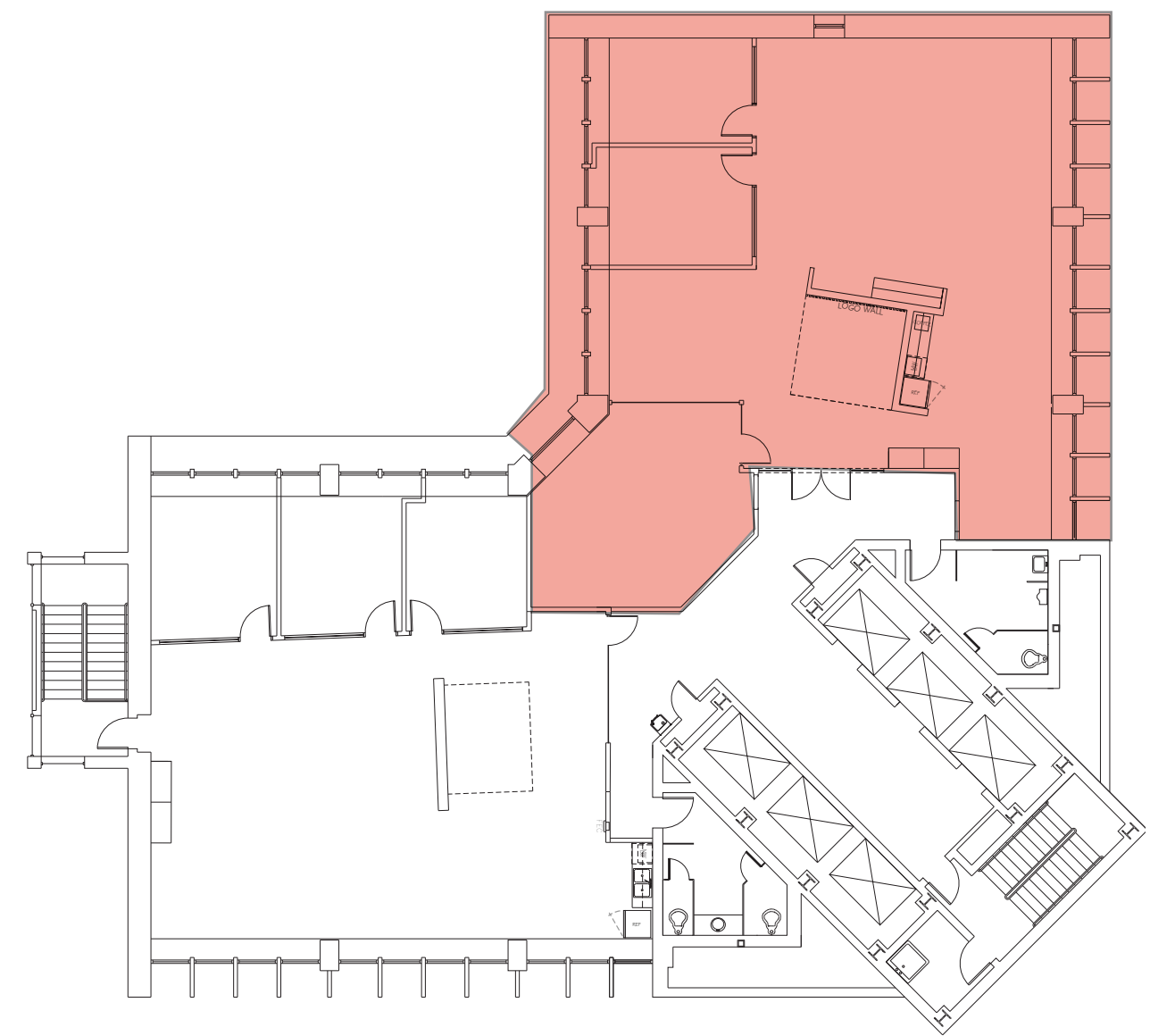




**SUITE 1700**

**2,749 SF**

**AVAILABLE NOW**

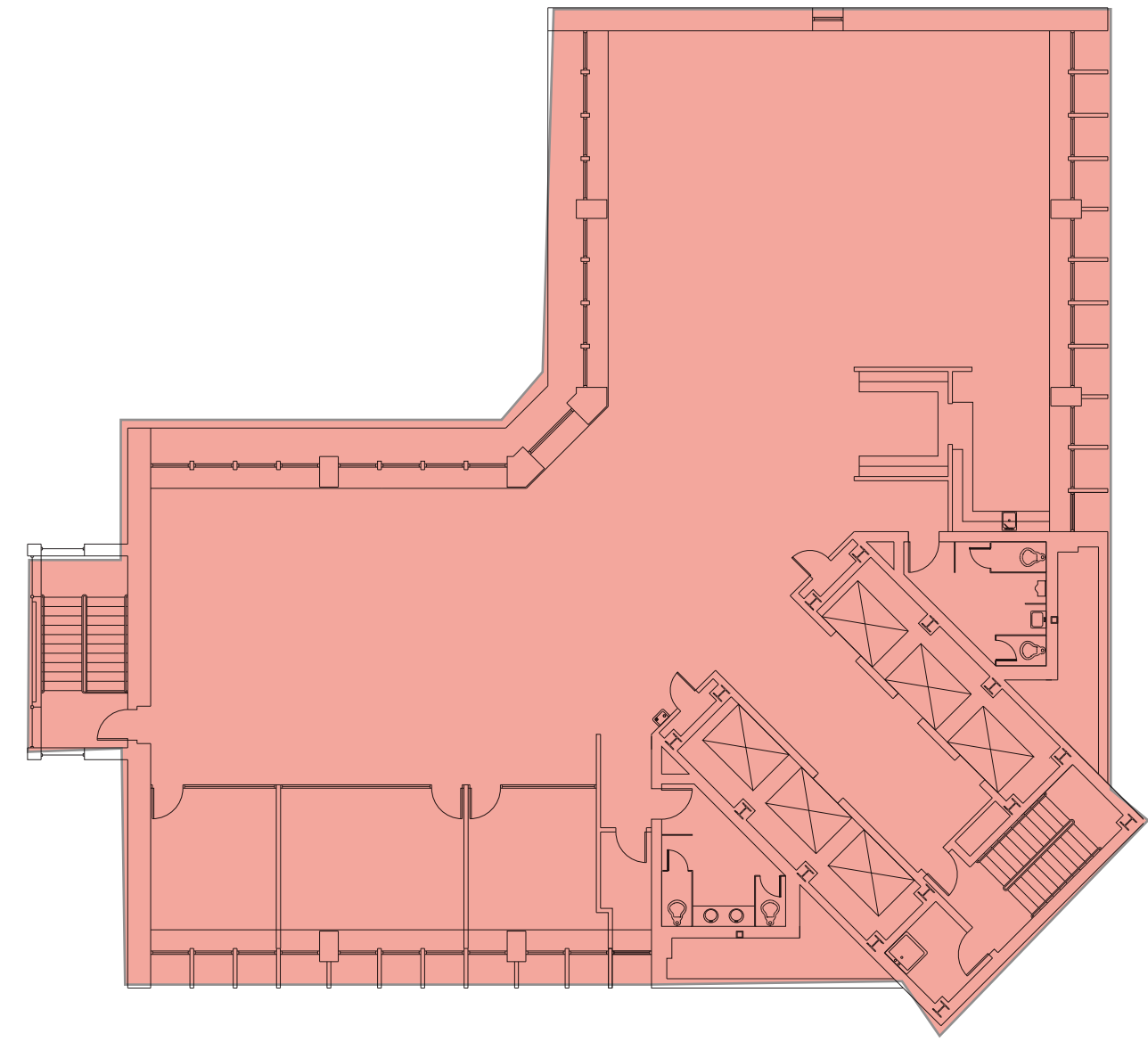




**SUITE 1500**

**5,960 SF**

**AVAILABLE NOW**

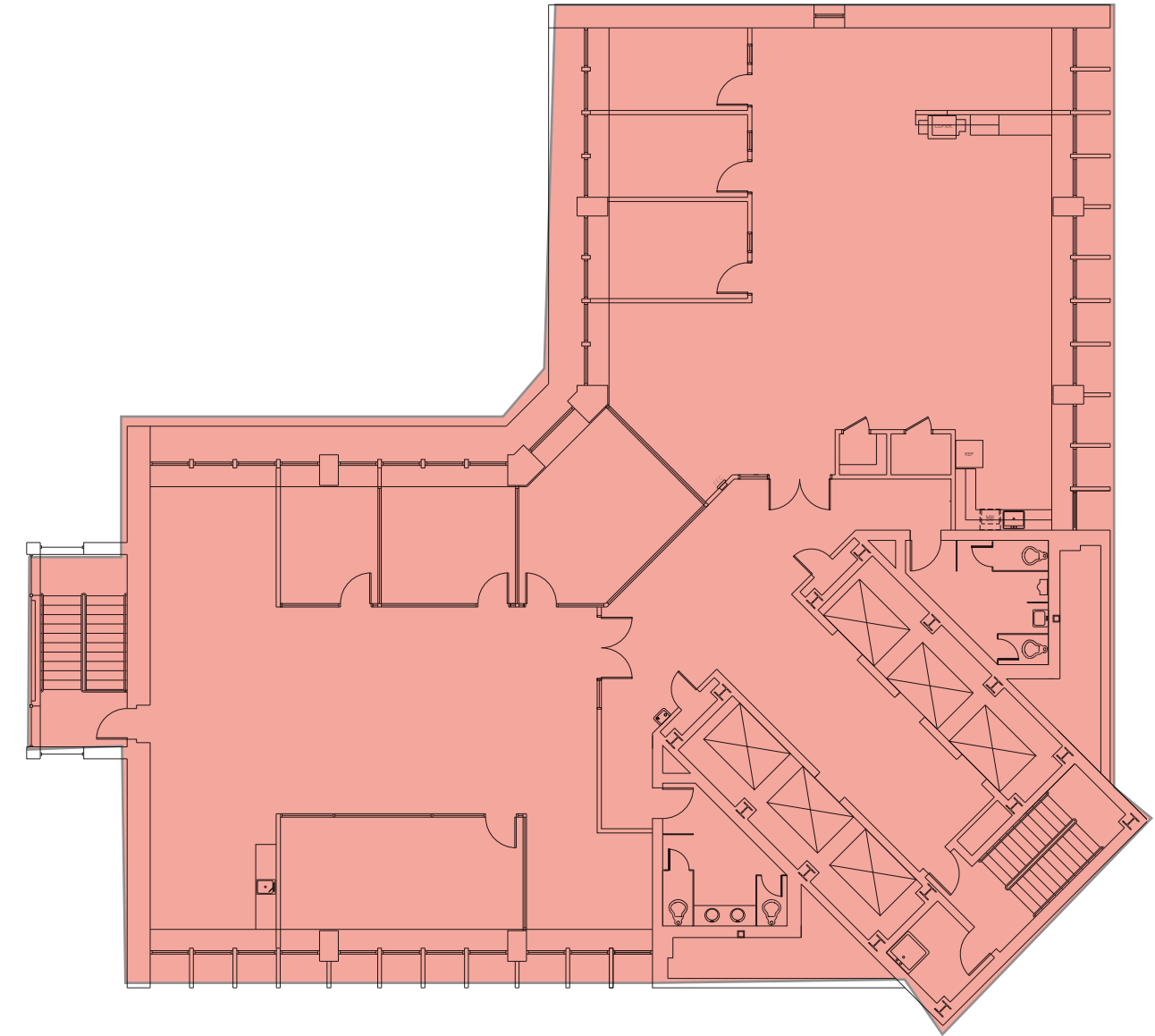




**SUITE 1400 & 1410**

**2,881 - 5,907 SF**

**AVAILABLE NOW**

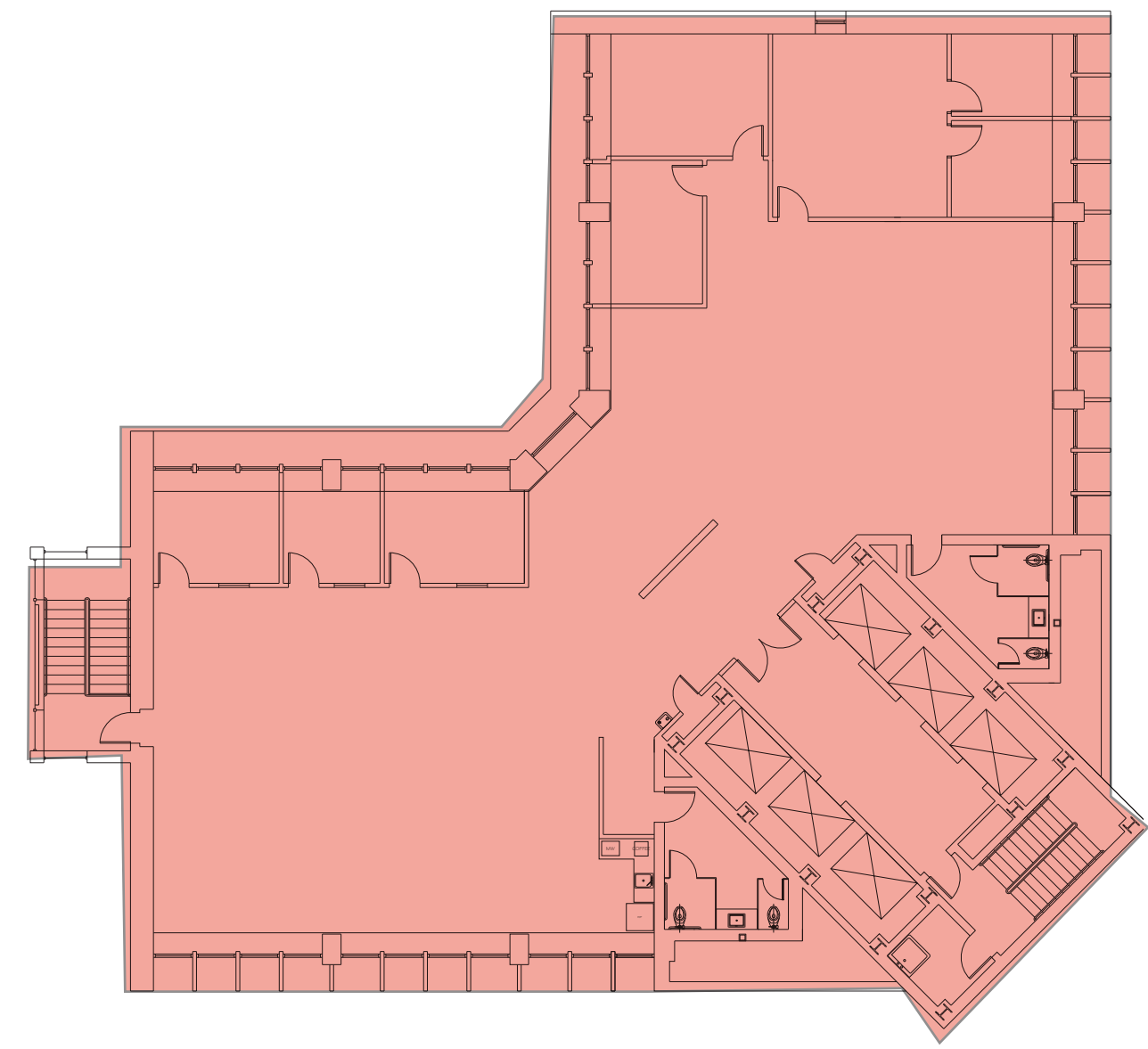




**SUITE 1200**

**5,790 SF**

**AVAILABLE NOW**

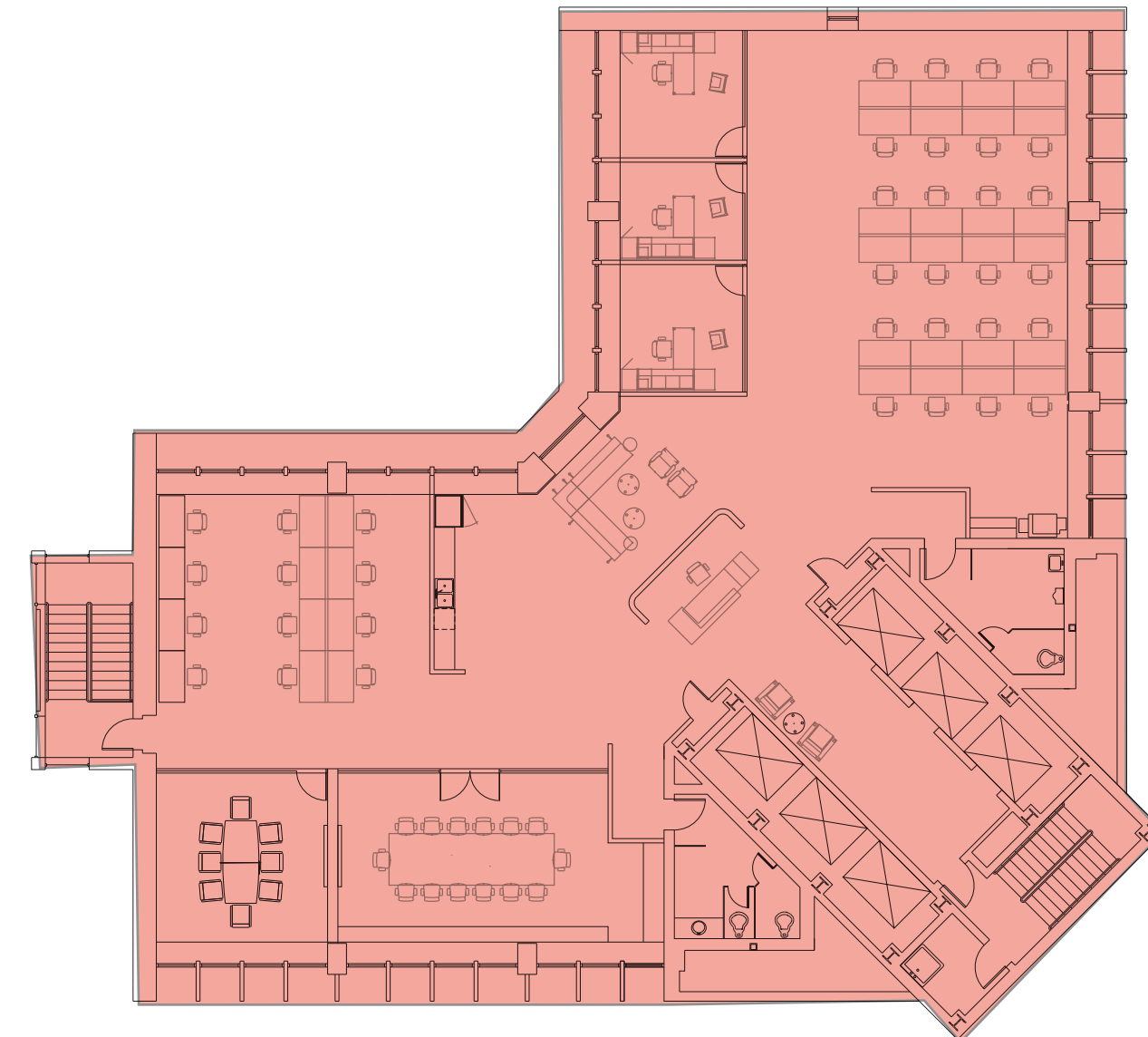


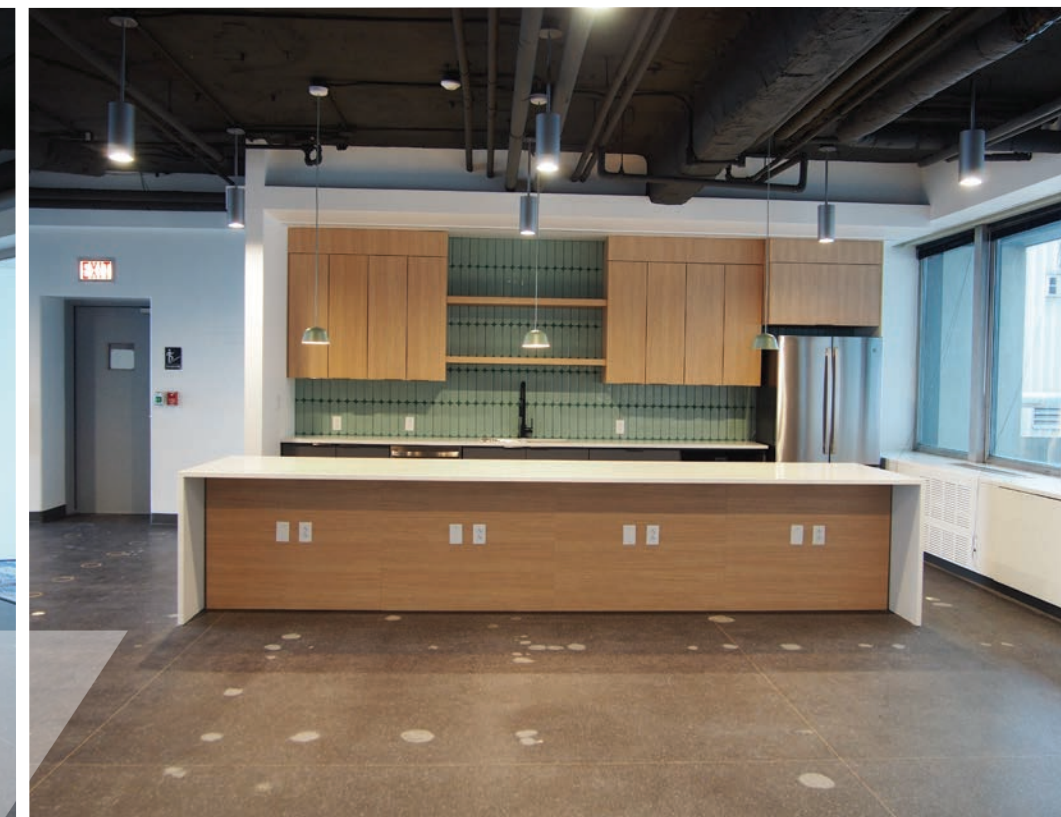


**SUITE 1100**

**5,790 SF**

**AVAILABLE NOW**

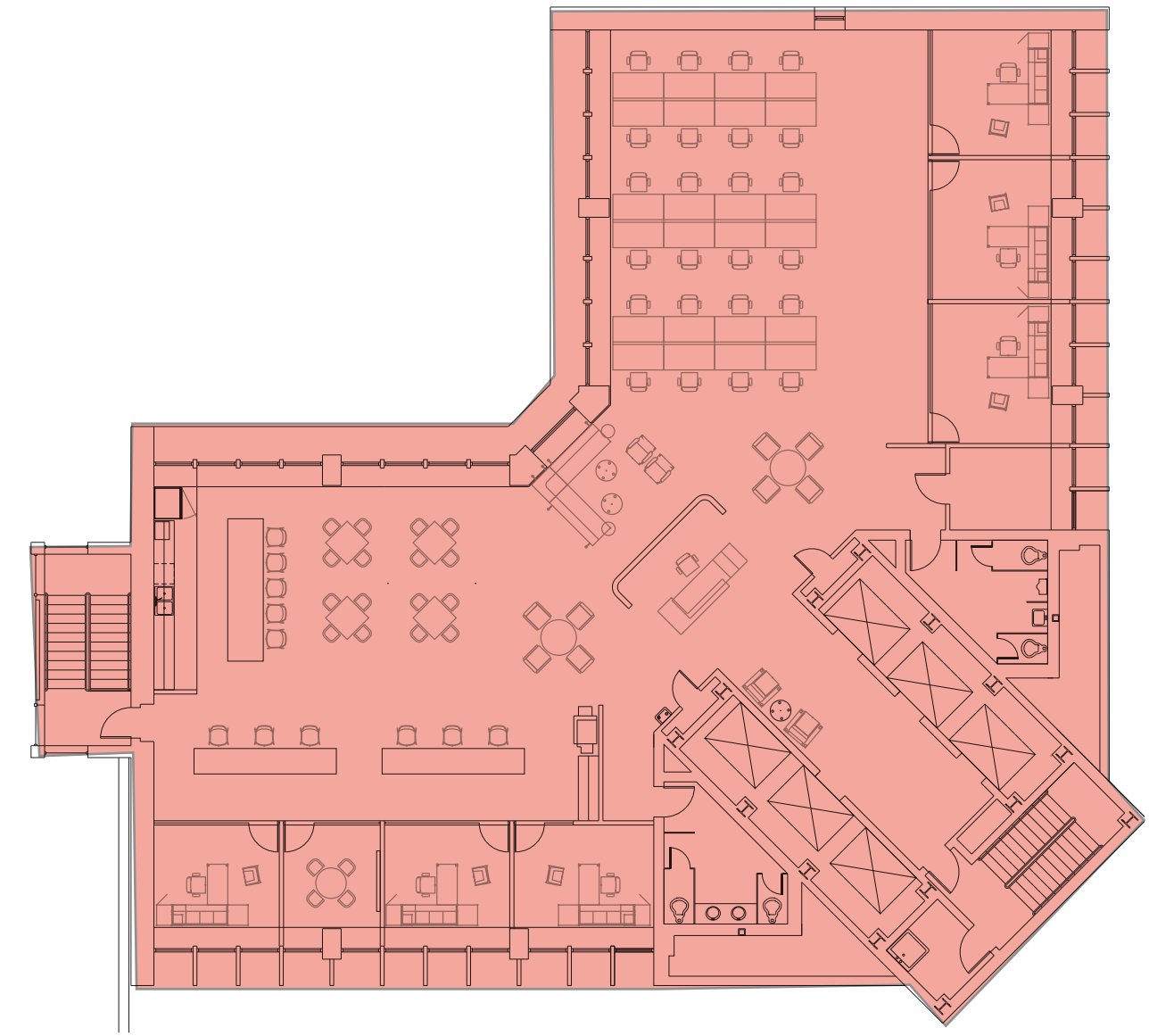




**SUITE 1000**

**5,790 SF**

**AVAILABLE NOW**

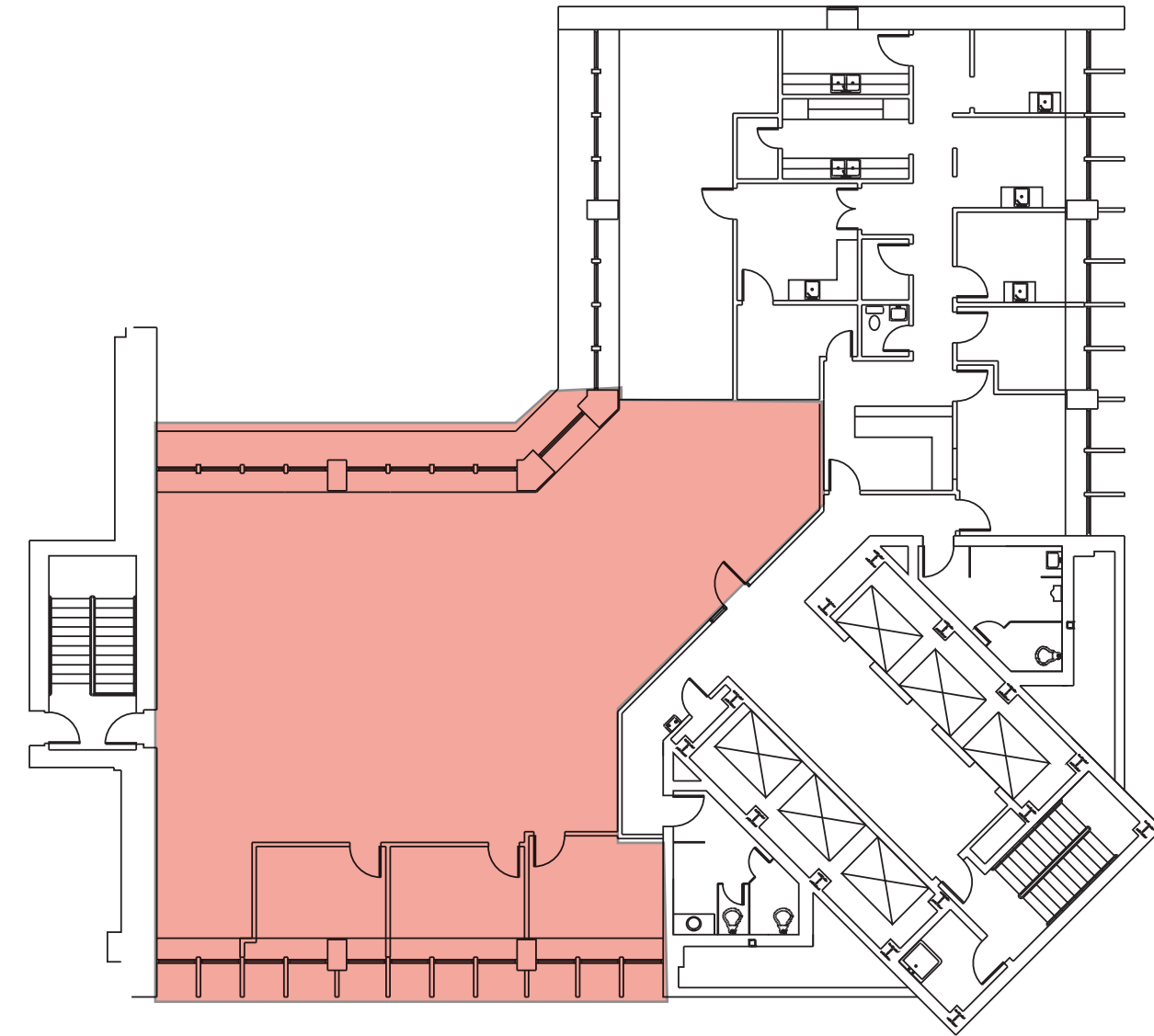


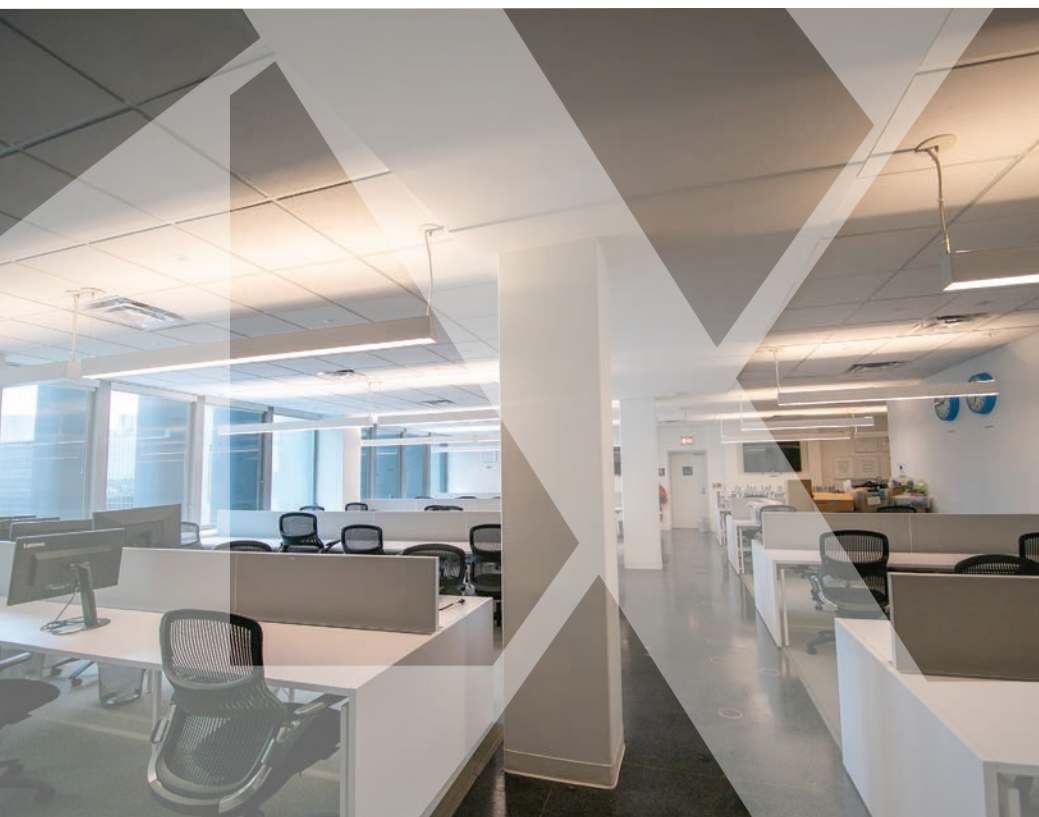


**SUITE 900**

**3,068 SF**

**AVAILABLE NOW**





**SUITE 800**  
*\*INTERIOR STAIRWELL*

7,190 SF- 21,867 SF

AVAILABLE NOW





**SUITE 700**  
**\*INTERIOR STAIRWELL**

7,190 - 21,867 SF

AVAILABLE NOW

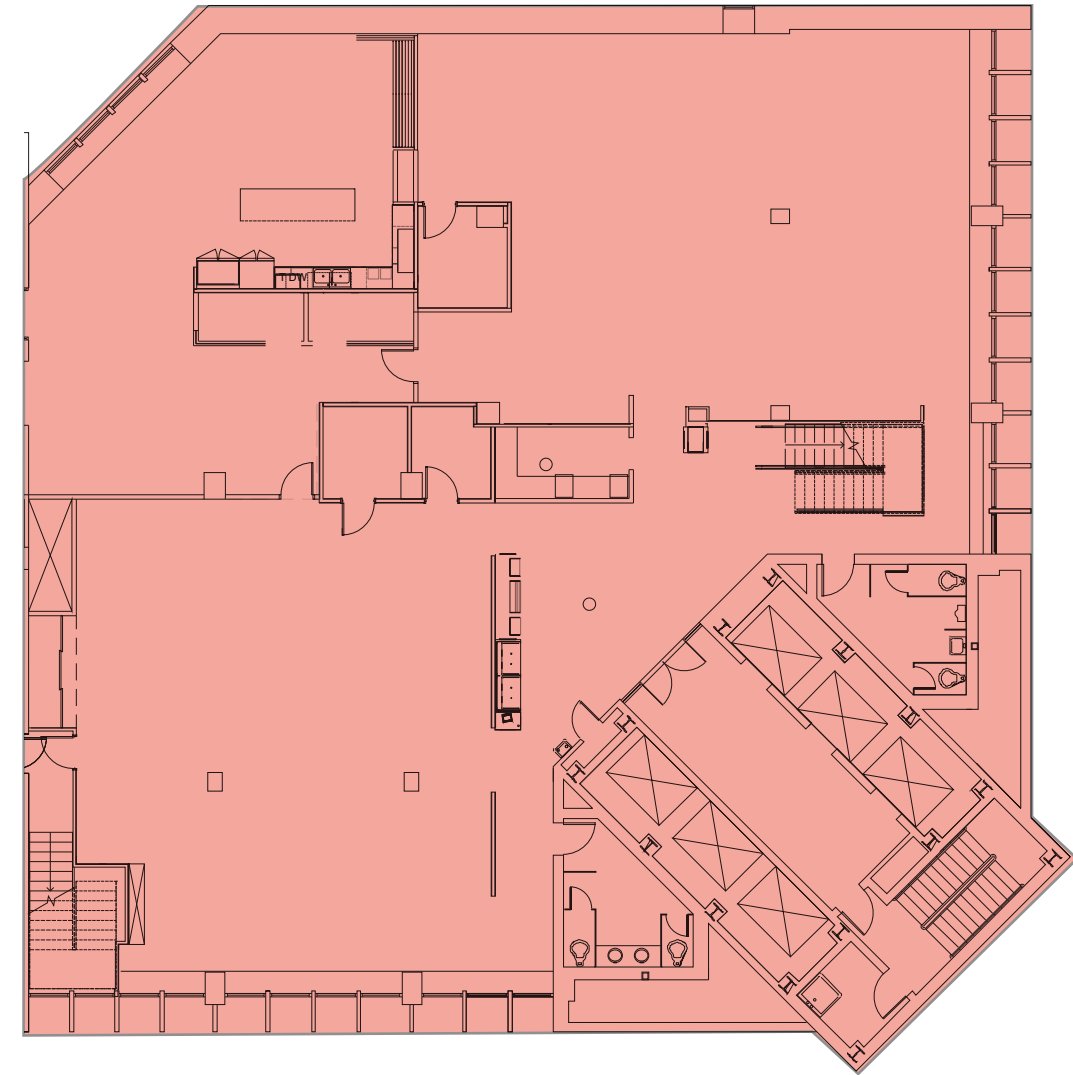




**SUITE 600**  
*\*INTERIOR STAIRWELL*

7,487 SF - 21,867 SF

AVAILABLE NOW

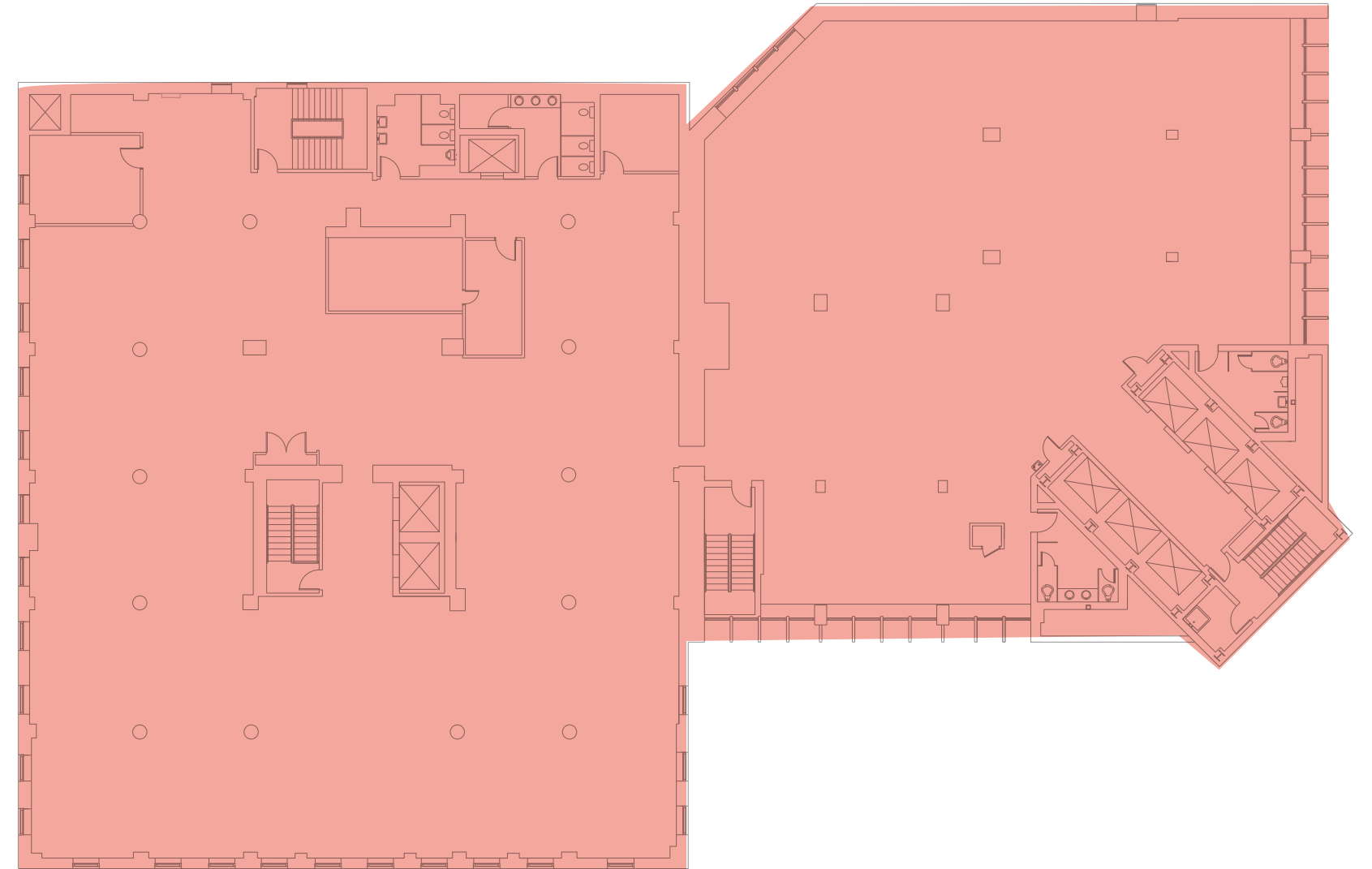




**SUITE 500 & 500A**

**7,502 - 18,304 SF**

**AVAILABLE NOW**

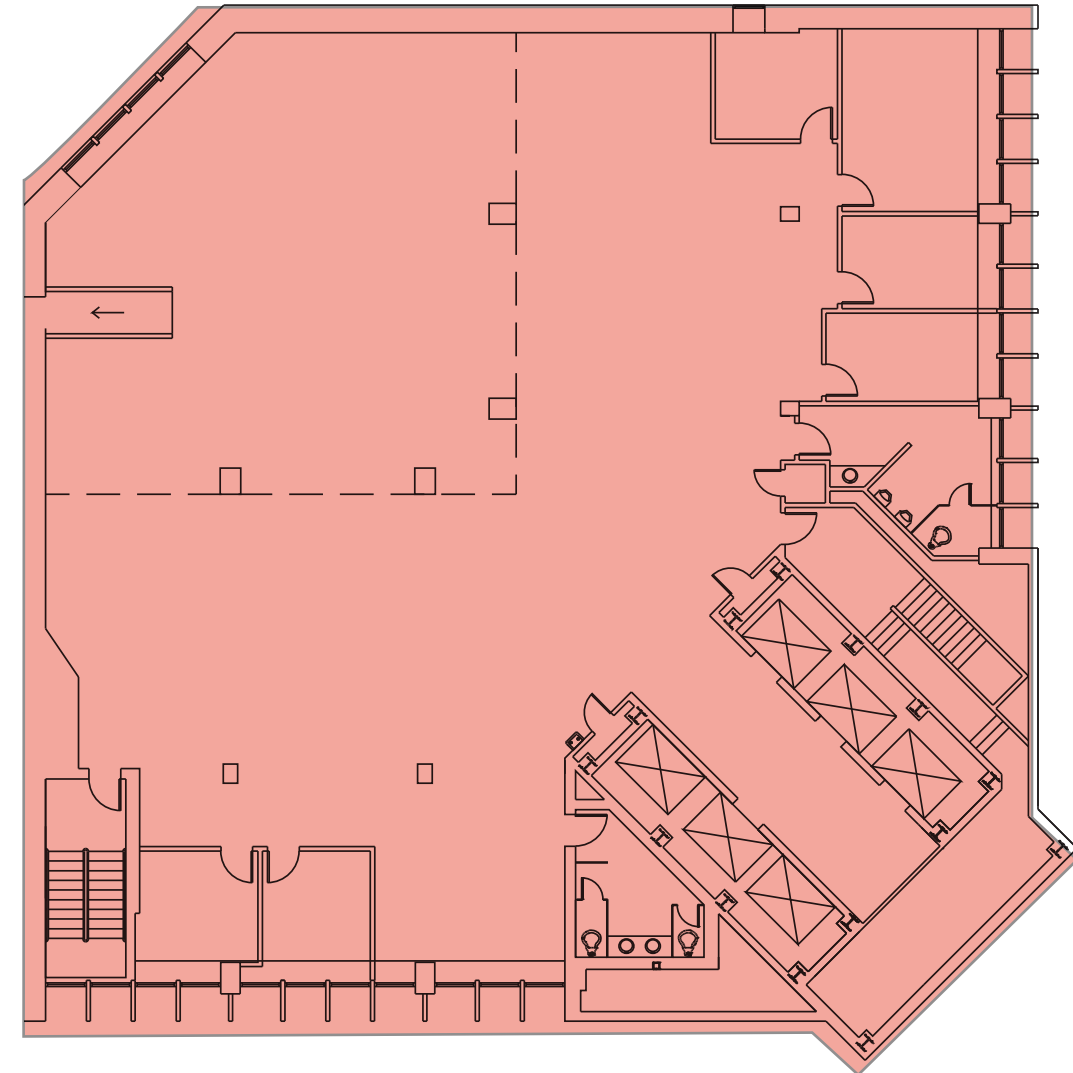




**SUITE 400**

**7,170 SF**

**AVAILABLE NOW**

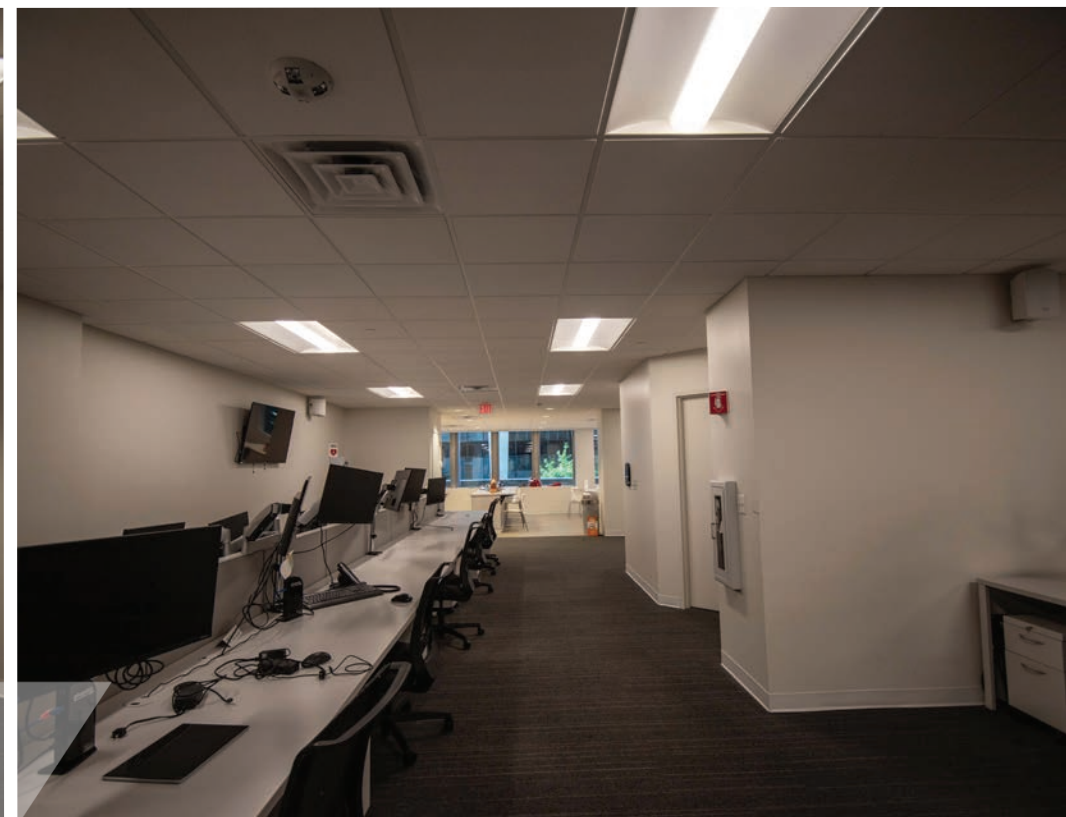
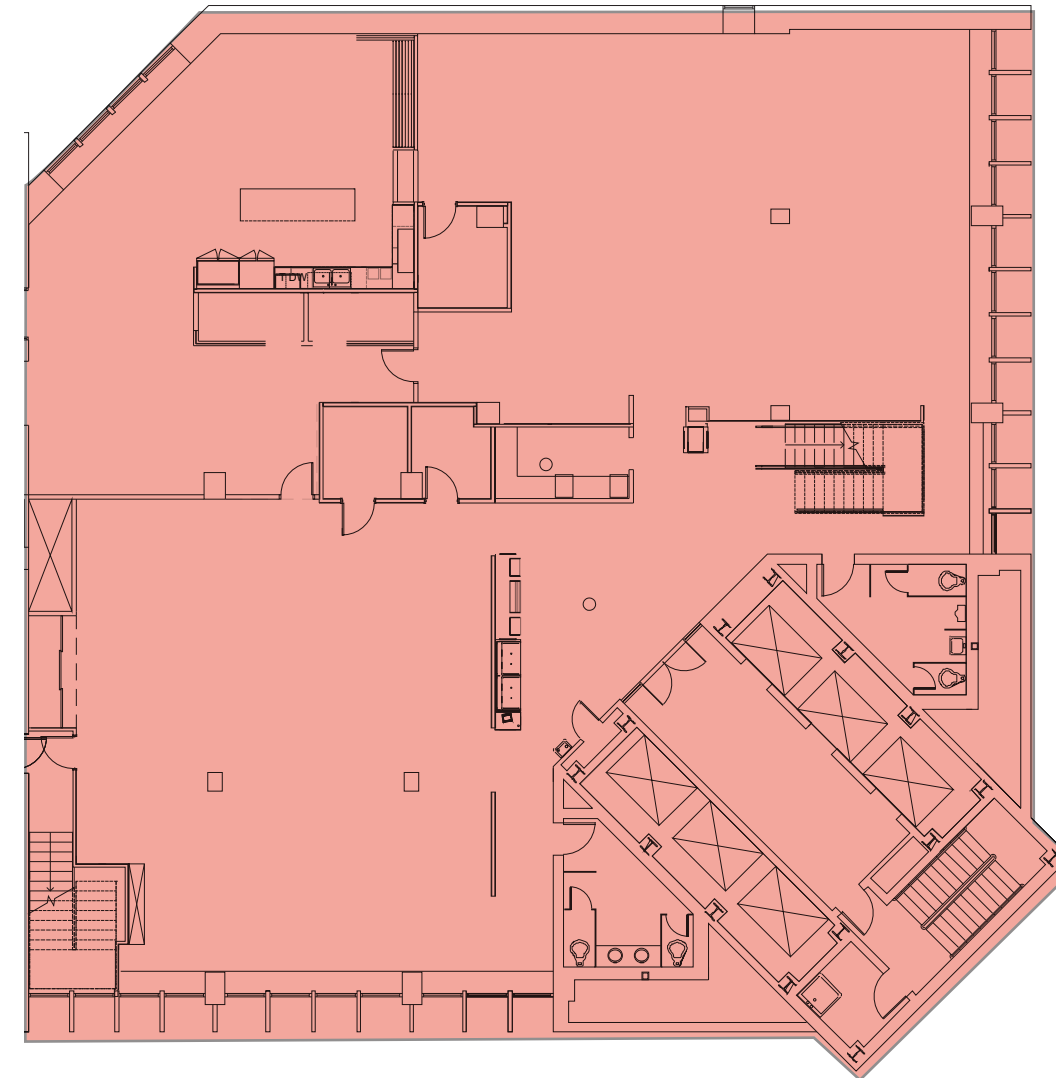




**SUITE 300**

**7,142 SF**

**AVAILABLE NOW**





**DAN BAUCHIERO**

Dan.Bauchiero@foundrycommercial.com

615.423.6851

**SHELBY HALL**

Shelby.Hall@foundrycommercial.com

615.771.0770