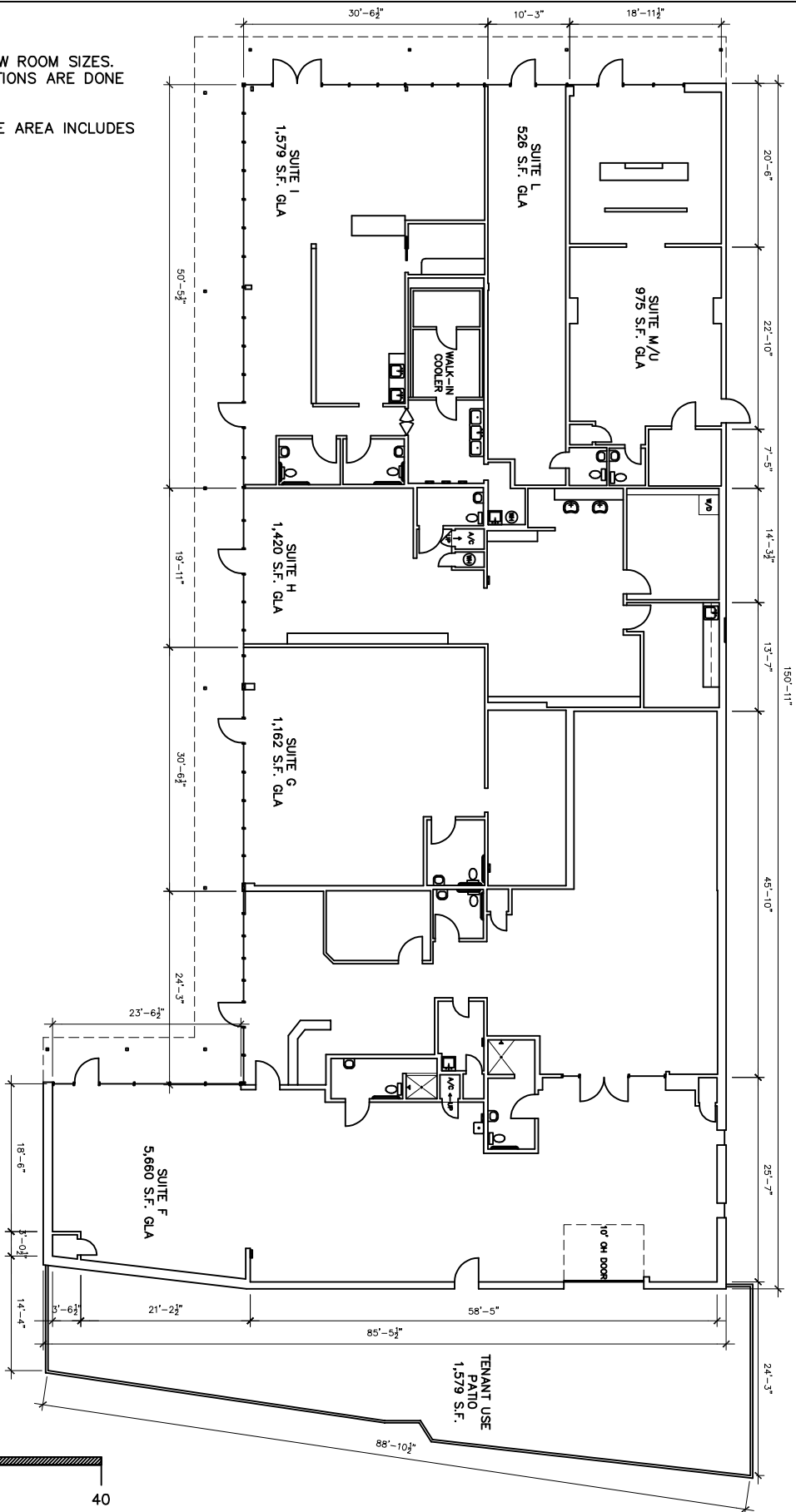
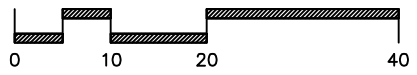


NOTE:

1. DIMENSIONS ARE TO SHOW ROOM SIZES. SQUARE FOOTAGE CALCULATIONS ARE DONE TO BOMA STANDARDS.
2. SUITE F GROSS LEASABLE AREA INCLUDES PATIO SQUARE FOOTAGE.



SCALE: 1/20" = 1'-0"



Drawing for:
 Avison Young
 515 Congress Ave.
 Ste. 1175
 Austin, TX 78701

2210 S. 1ST ST.
 AUSTIN, TEXAS
 GROSS LEASABLE AREA: 11,322 S.F.

THE MEASUREMENTS, FLOOR PLANS,
 AND CALCULATIONS ARE ACCURATE
 USING BOMA MEASUREMENT
 STANDARDS FOR RETAIL BUILDINGS.
 ANSI/BOMA Z65.5 - 2020
 Project No.: 2434.01
 Date: May 23, 2024
 ©2024

DIMENSIONS
 FLOOR PLANS
 Austin, Texas
 dimensionsfloorplans.com
 Phone: (512)342-0114