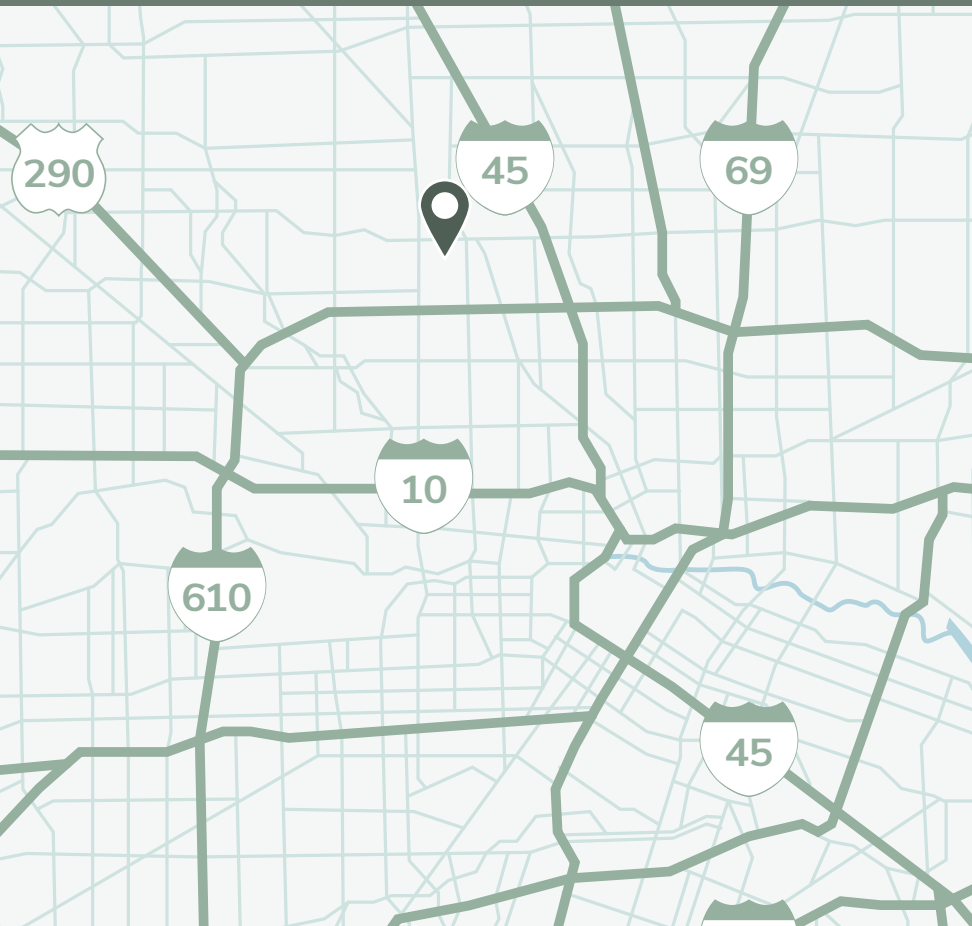




PINE FOREST BUSINESS PARK
417-421 W. CROSSTIMBERS ST.
HOUSTON, TX 77018



FOR LEASE

- 42,488 SF available
- 38,854 SF warehouse
- 3,574 SF office
- Cross-dock configuration
- 15 dock-high doors, 2 ramps
- 22' clear height
- Fully sprinklered
- End-cap suite fronting Blueberry Street
- Strategic infill Northwest location
- Immediate access to Loop 610, Hwy 290, I-45

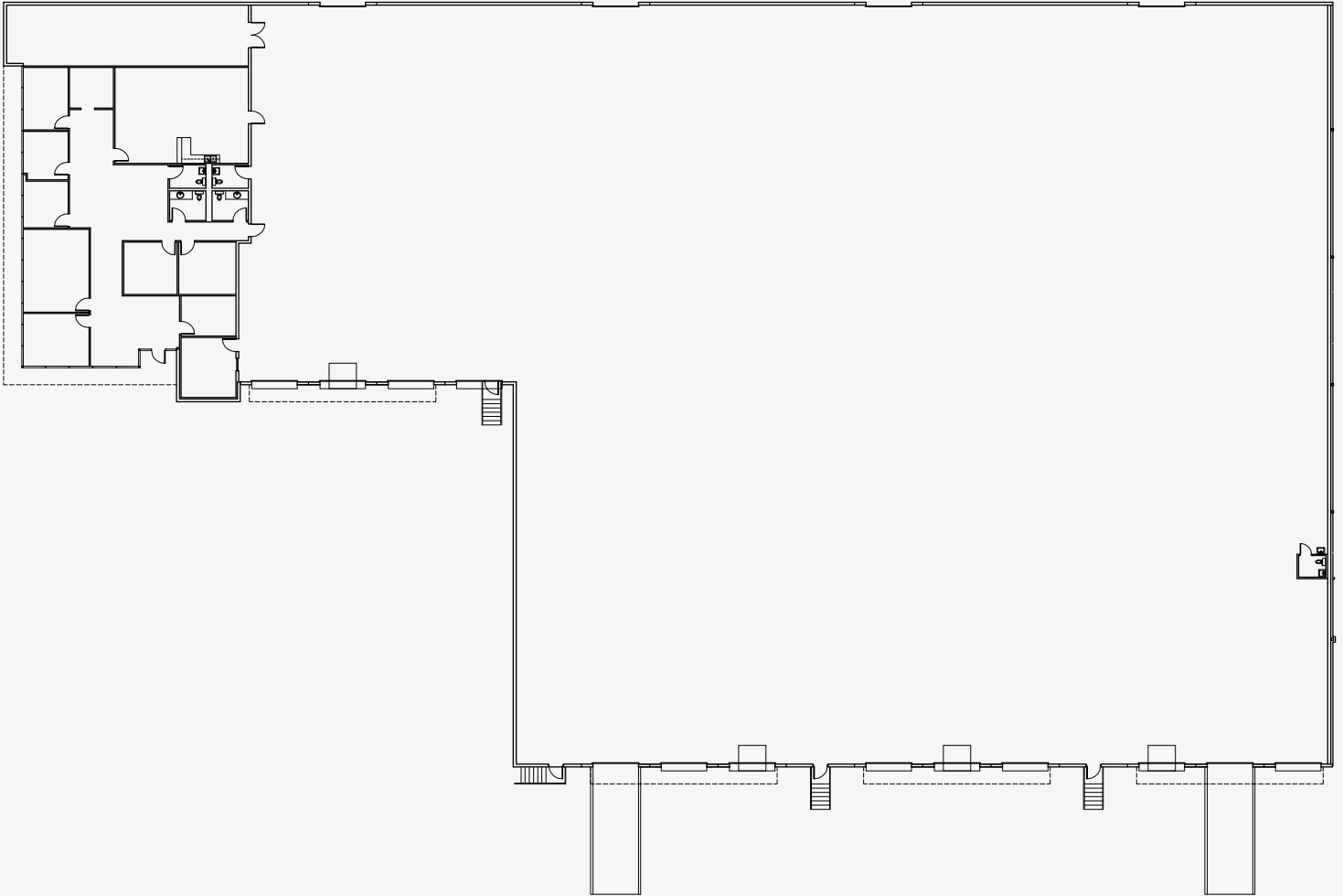
FOR LEASING INFORMATION, CONTACT:

BOONE SMITH | 713.300.0267 | boone.smith@streamrealty.com
GARRET GEACONE | 713.300.0232 | garret.geacone@streamrealty.com
NATALIE GILBERT | 713.332.3413 | natalie.gilbert@streamrealty.com



FOR LEASE 42,488 SF

PINE FOREST BUSINESS PARK
417-421 W. CROSTIMBERS ST.
HOUSTON, TX 77018



FOR LEASING INFORMATION, CONTACT:

BOONE SMITH | 713.300.0267 | boone.smith@streamrealty.com
GARRET GEACONE | 713.300.0232 | garret.geaccone@streamrealty.com
NATALIE GILBERT | 713.332.3413 | natalie.gilbert@streamrealty.com

STREAM



MOXIEBRIDGE