

FOR LEASE

THE DJC BUILDING

*±6,914 SF Office Space
Available for Lease in Seattle*

83 COLUMBIA ST
SEATTLE, WA 98104

KIDDER.COM

 Kidder
Mathews

83 COLUMBIA ST

THE IDEAL OFFICE LOCATION

Convenient downtown location with easy access to Seattle waterfront and ferry terminal. Excellent option for employers looking to be at the heart of it all.

AVAILABLE FOR LEASE

SUITE 300,301,305

TOTAL SF	5,001 SF
SPACE	Lightly built-out space
USE	Perfect for tech groups, law firms, or any general office use
LOCATION	Property has water views

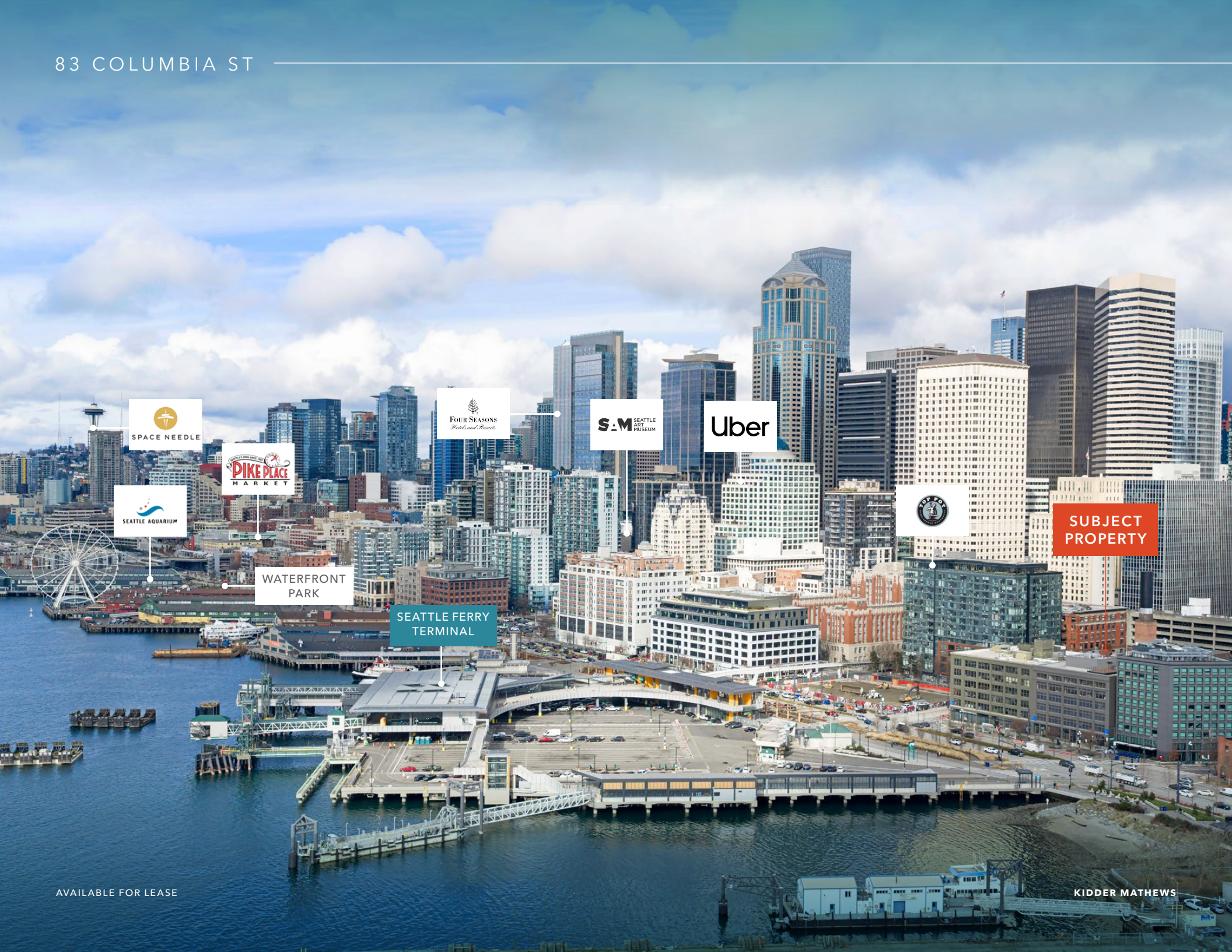
SUITE 303

TOTAL SF	1,913 SF (Can be leased in addition to 5,001 SF)
AMENITIES	Elevator
ACCESS	Secure access
LOCATION	Right next to the waterfront and ferry terminal within close walking distance

6,914 SF
TOTAL AVAILABLE

\$19.50
GROSS

KIDDER MATHEWS



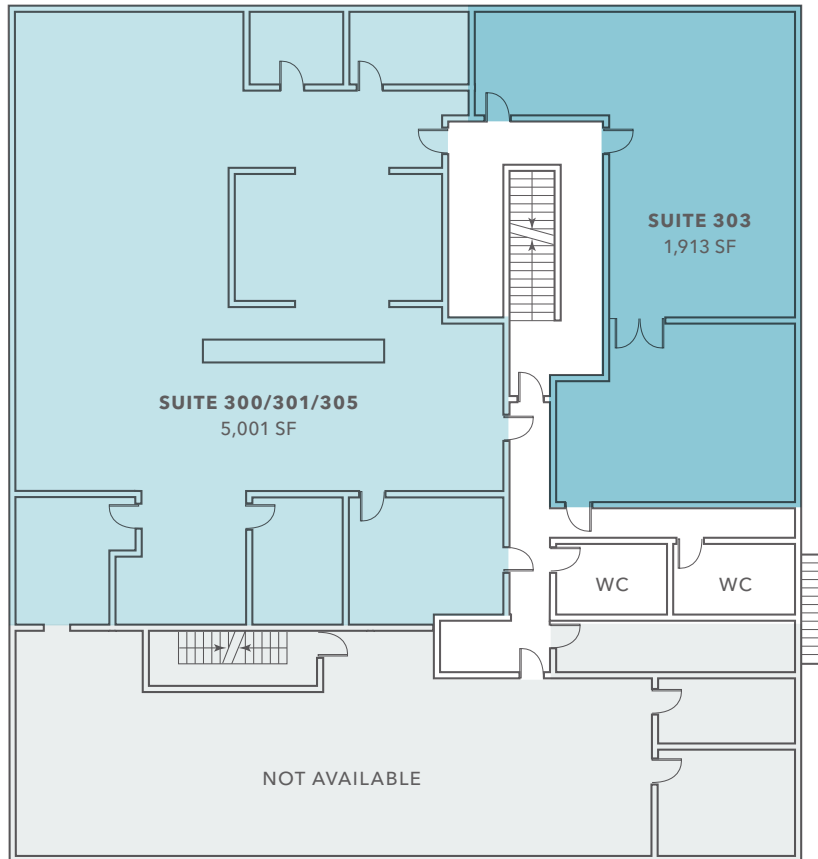
WATERFRONT
PARK

SEATTLE FERRY
TERMINAL



SUBJECT
PROPERTY

FLOOR PLAN



6,914 SF

TOTAL AVAILABLE

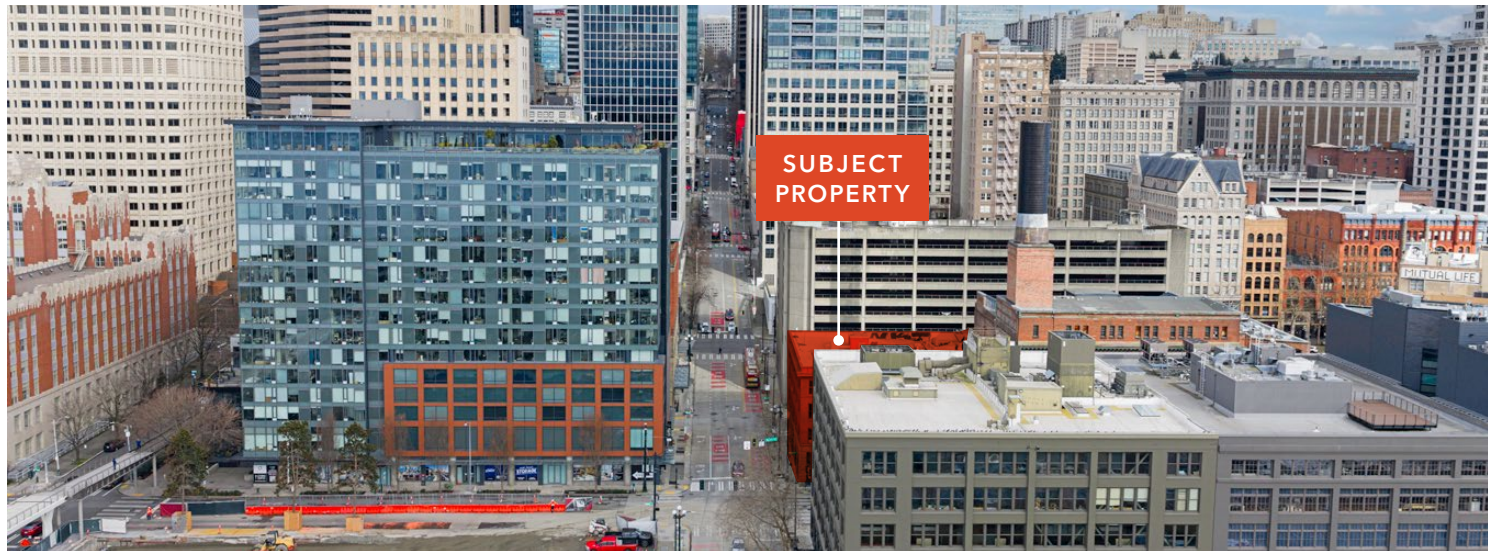
\$19.50

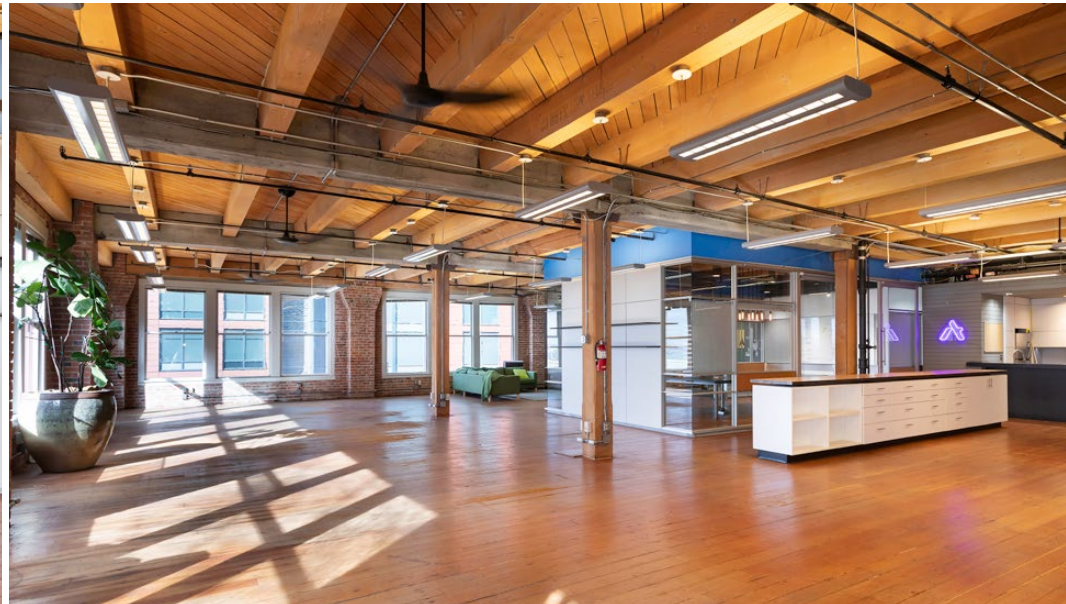
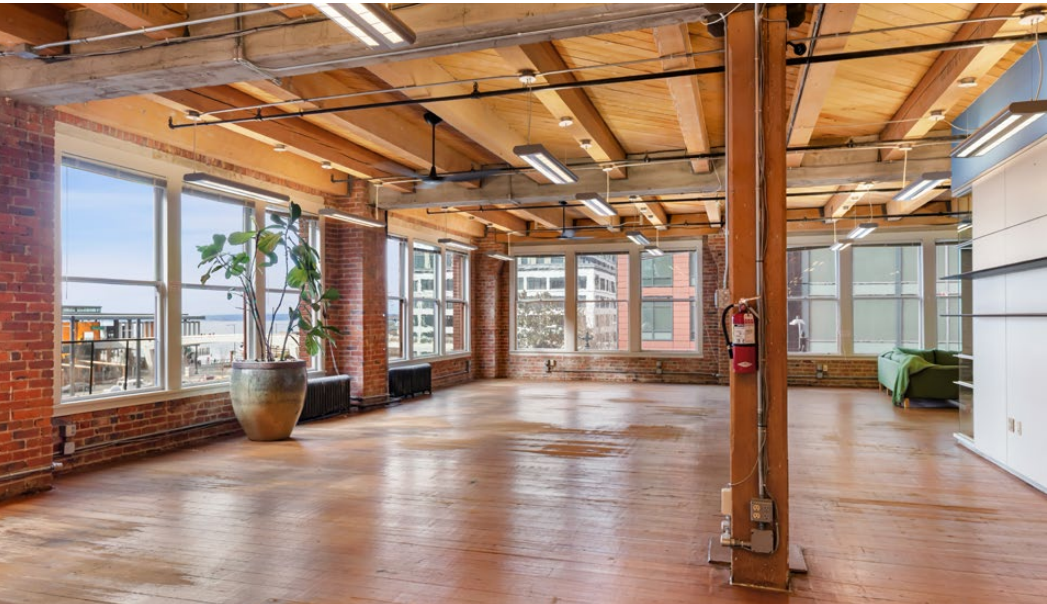
GROSS

NOW

AVAILABLE









Exclusively listed by

STEVE PELLUER

Senior Vice President | Shareholder
206.914.3382
steve.pelluer@kidder.com

ZEKE PELLUER

Associate Vice President
425.614.0082
zeke.pelluer@kidder.com

KIDDER.COM