

Mid Pinellas
Industrial/Flex Spaces
100% climate controlled

FOR LEASE



8565 (A) & 8575 (B)
SOMERSET DRIVE
LARGO, FL 33773

8,700-SF Each

• **\$12.50 PSF NNN**



VECTOR
COMMERCIAL REAL ESTATE

www.VectorRealty.com
125 5th Street South Suite 201
Saint Petersburg, Florida 33704
727-823-1230



Ned Willis
NWillis@VectorRealty.com
(727) 481-3356



Ashley Willis
AWillis@VectorRealty.com
(727) 776-0290

EXECUTIVE SUMMARY

**Mid Pinellas 100%
climate-controlled spaces
conveniently located between
Bryan Dairy Rd. and Ulmerton Rd.
just East of Starkey Rd. Ideally
suited for warehousing and
distribution.**

**These spaces are in excellent
condition and both feature a
small 500-SF office area, and
8,200 SF of open warehouse
space.**

**The warehouse clear height in
each space is 26' at the peak and
17' at the eaves with 1 truck well,
1 grade-level door, and LED
lighting.**

**8565 Somerset Dr. Suite A is
available for lease Oct. 1st 2026.**



LEASE RATE
\$12.50 PSF NNN



LOCATION
8575 (B) & 8565 (A)
Somerset Drive
Largo, FL 33773



SIZE
8,700-SF TOTAL
• 500-SF OFFICE



FFEATURES
1 Truck Well
1 Grade Level Door
LED Lighting
100% Climate Controlled



BUILDING
26' Clear Height
at Peak



PARKING
20 Parking Spaces



USE
Industrial/
Warehouse
Flex



8575 Somerset Drive
Largo, FL 33773

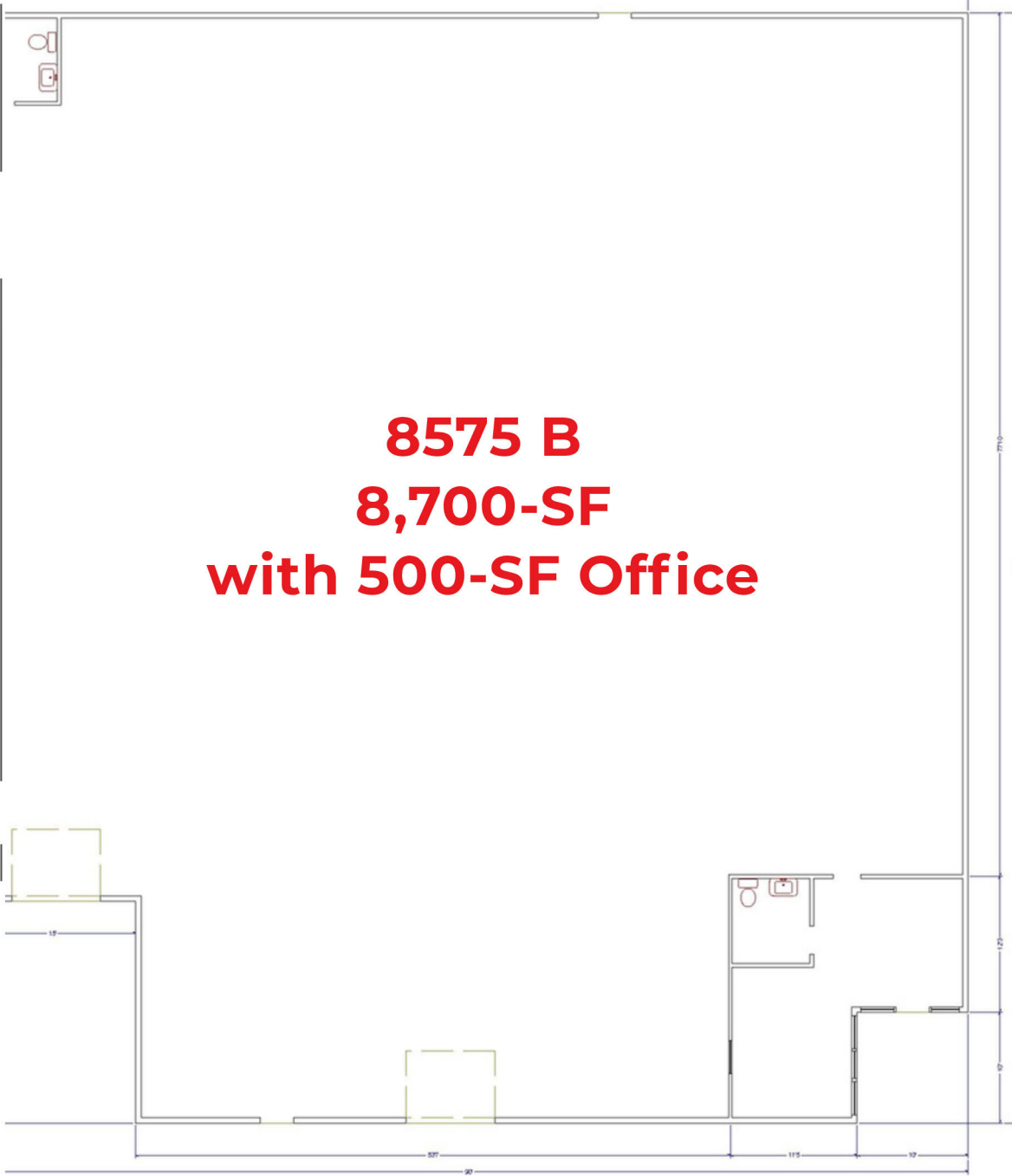


VECTOR
COMMERCIAL REAL ESTATE

8575 Somerset Drive
Largo, FL 33773

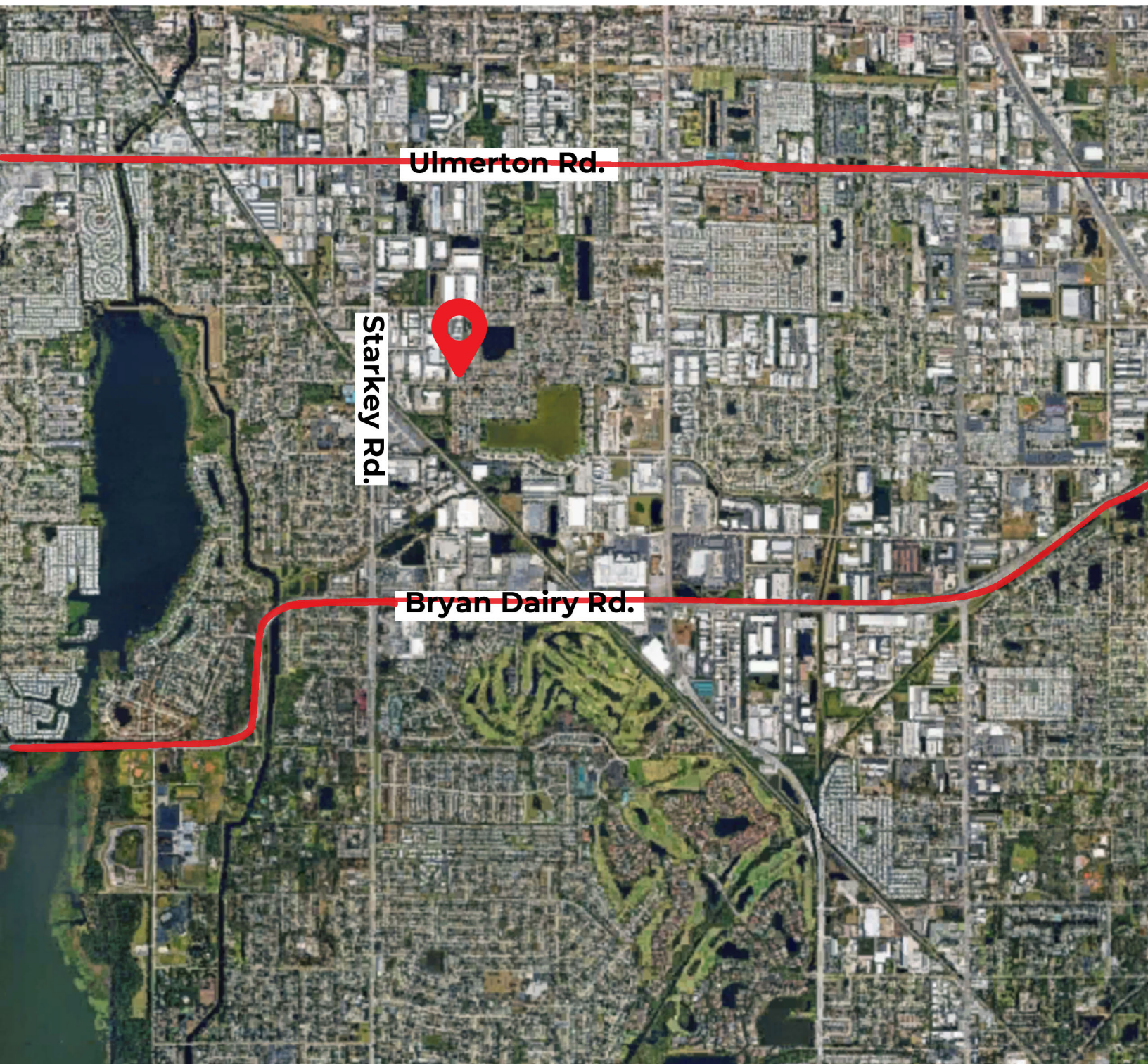
Floor Plan

8575 B
8,700-SF
with 500-SF Office



**8575 & 8565 Somerset Drive
Largo, FL 33773**

Market Map



Ulmerton Rd.

Starkey Rd.

Bryan Dairy Rd.



VECTOR
COMMERCIAL REAL ESTATE

Vector Commercial Real Estate Services, LLC is a licensed Real Estate Brokerage. No warranties or representations, express or implied, are made as to the accuracy of the information contained herein, and same is submitted subject to omissions, changes of price, rental or other conditions, withdrawal without notice, and to any other limitations imposed by our principals.