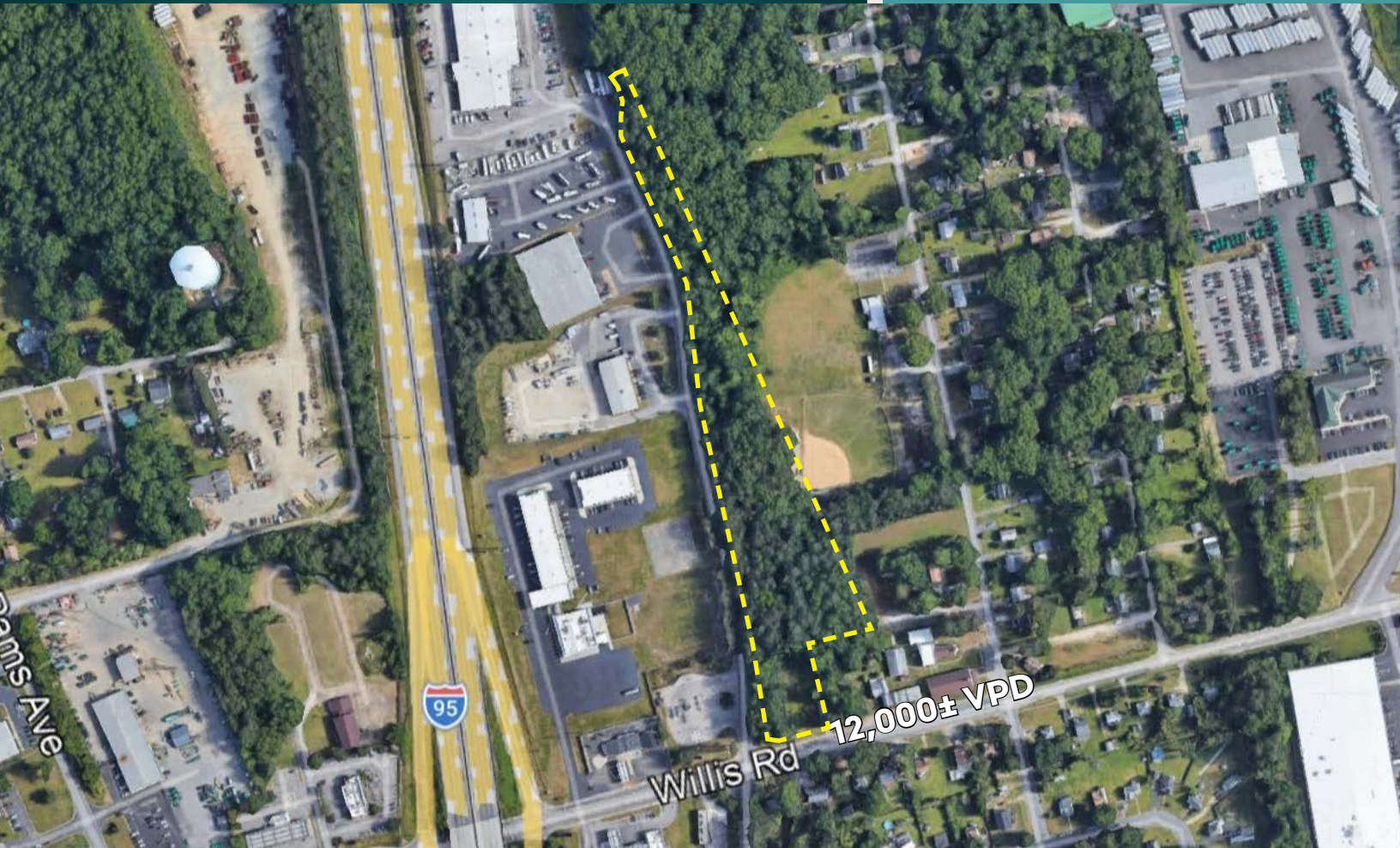


FOR SALE

**2032 Willis Road
Richmond, VA 23237**



COMMONWEALTH
COMMERCIAL REAL ESTATE SOLUTIONS



Commercial Property

- 4.6± Acre Commercial Property with convenient access to I-95
- Zoned WD which includes potential uses such as Car Wash, Self Storage, Gas Station, and Hotel/Motel
- 180± feet of frontage on Willis Road
- Utilities Available
- Reduced Price: ~~\$750,000~~ **REDUCED \$700,000**

DEMOGRAPHICS	1 MILE	3 MILE	5 MILE
POPULATION	1,743	30,639	90,509
AVERAGE HH INCOME	\$71,535	\$99,128	\$103,791
DAYTIME EMPLOYEES	3,363	14,997	33,967

This document has been prepared for informational purposes only. All information contained herein has been obtained from sources believed to be reliable; however, no representation or warranty, express or implied, is made as to the accuracy or completeness of the information contained herein.

For More Information:

Michael Chapman

Land Sales Associate

o: 804-346-9014

mchapman@commonwealthcommercial.com

Ryan Fanelli

Senior Vice President, Partner

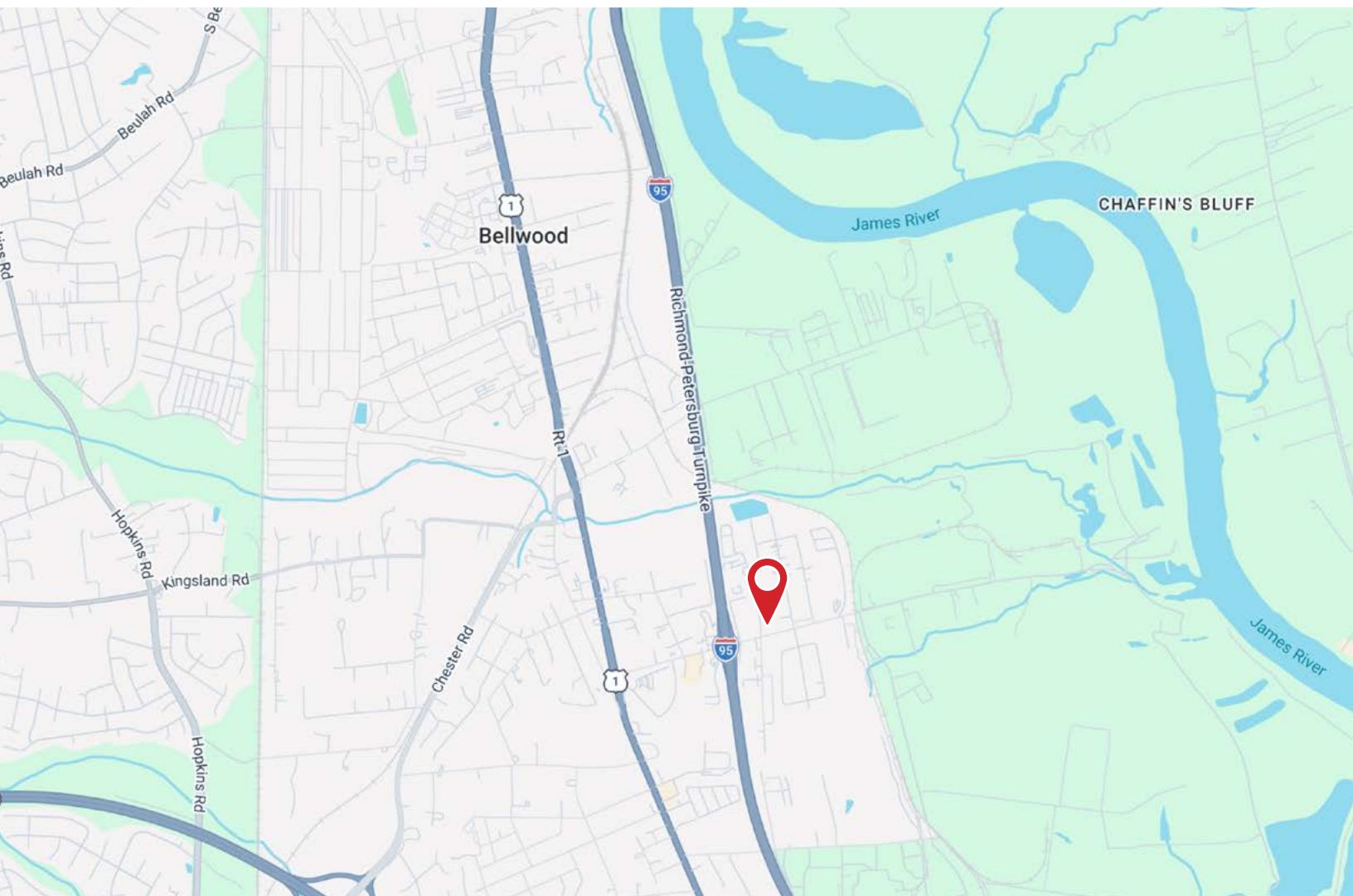
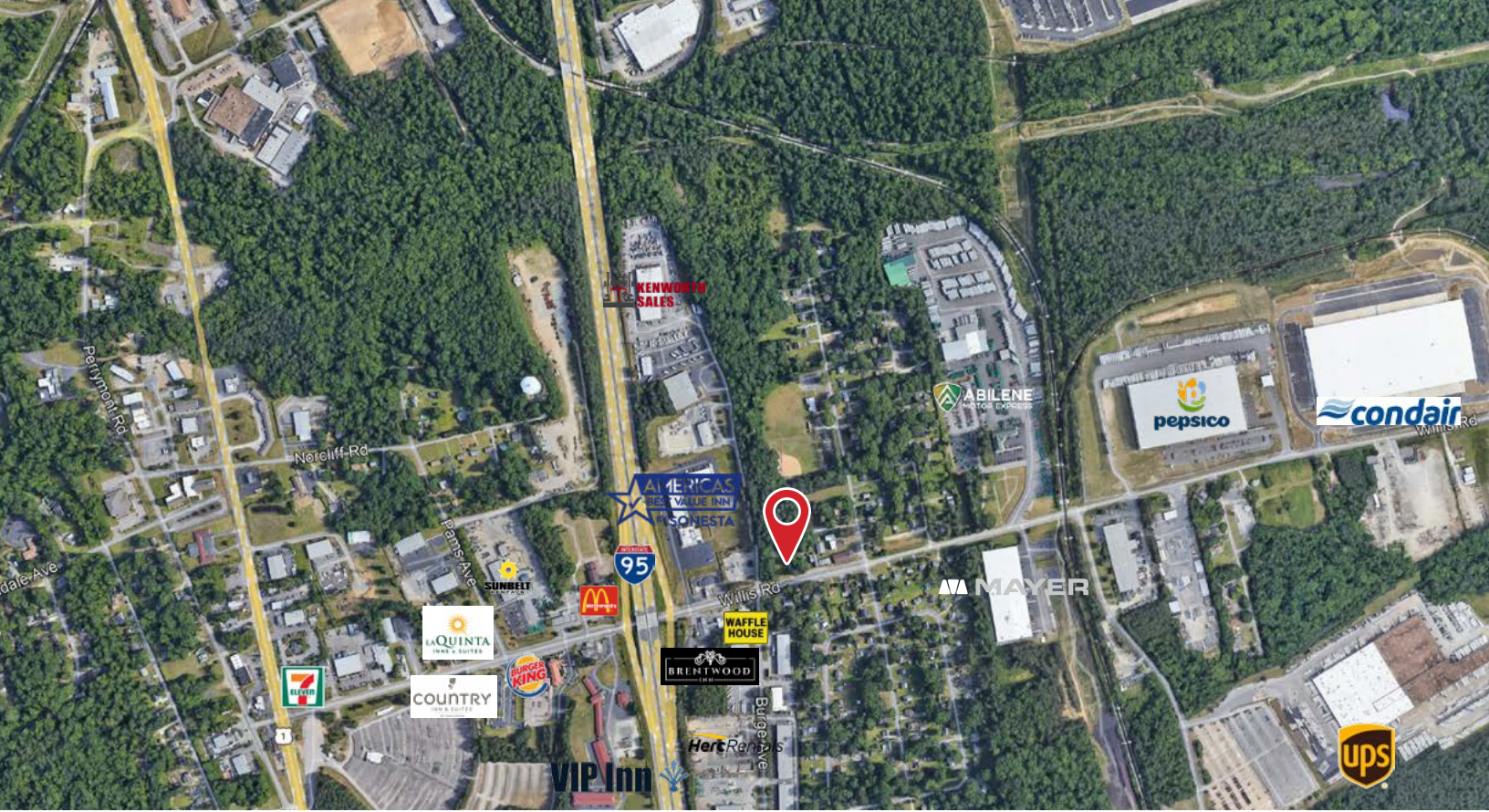
o: 804-400-6163

rfanelli@commonwealthcommercial.com

4198 Cox Road, Suite 200
Glen Allen, VA 23060

o: 804-346-4966

commonwealthcommercial.com



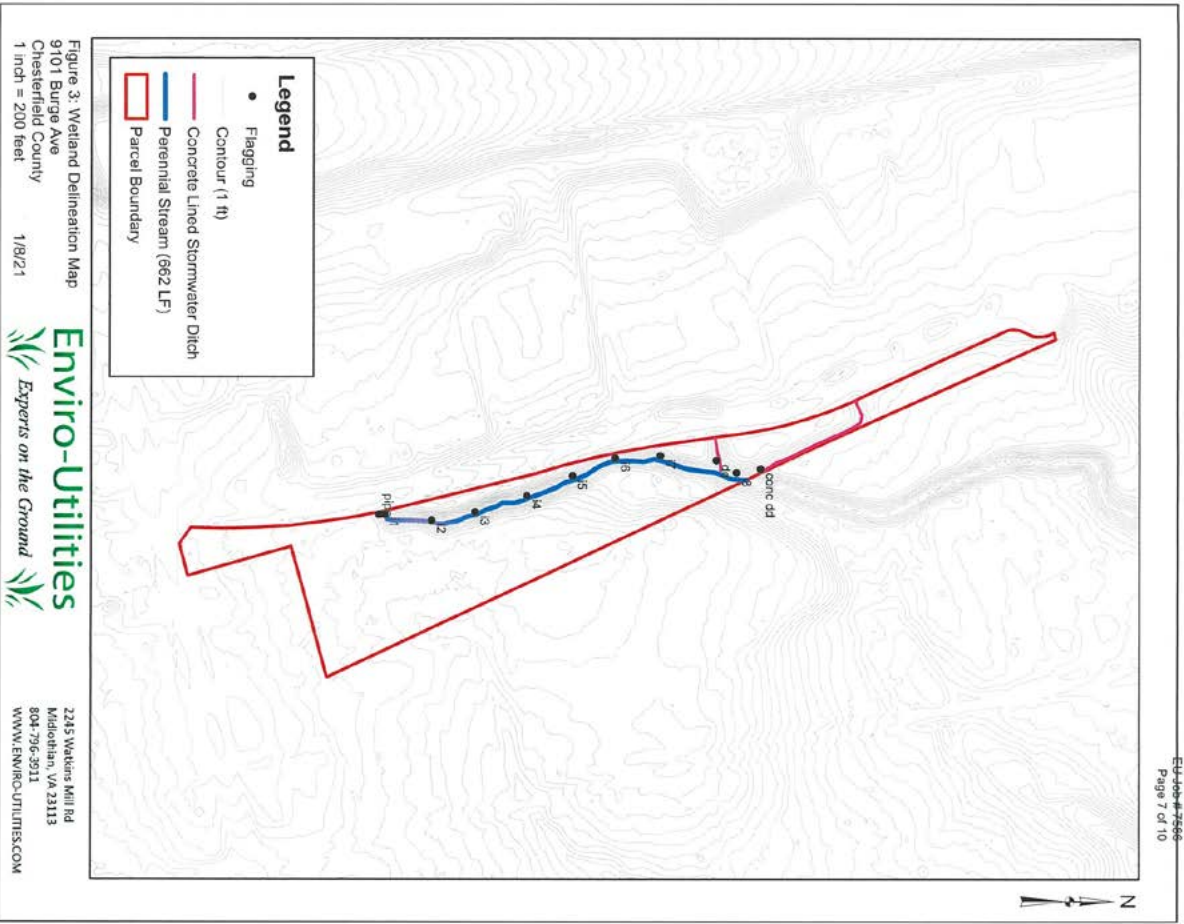
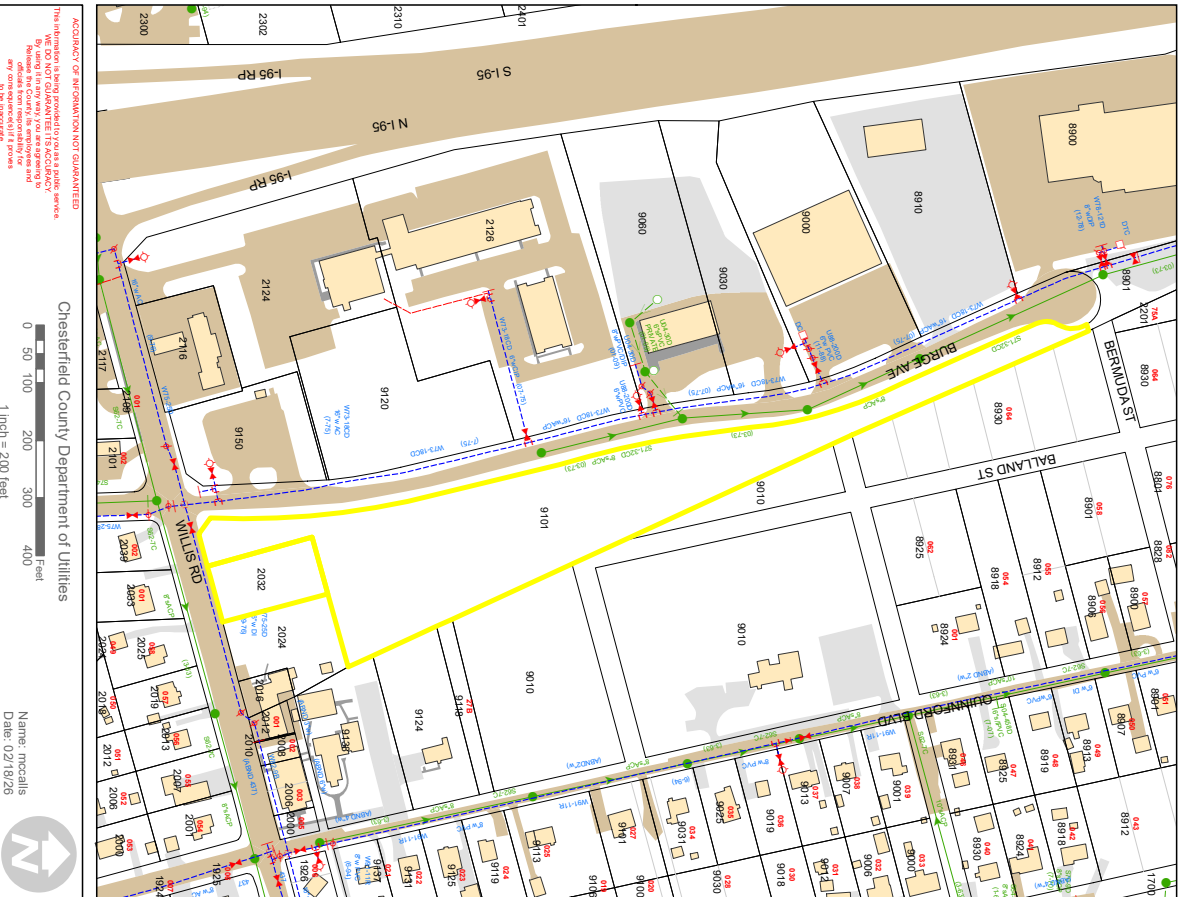


Figure 3: Wetland Delineation Map
9101 Budge Ave
Chesterfield County
1 inch = 200 feet



2245 Watkins Mill Rd
Middleton, VA 23113
804-796-3911
WWW.ENVIRO-UTILITIES.COM



ACQUAIDOR OF INFORMATION NOT GUARANTEED
This information has been provided for your information only. We do not warrant the accuracy of this information. We do not assume any liability for any errors or omissions. To the maximum extent permitted by law, we disclaim any liability for any damages, including consequential damages, arising from the use of this information.

Chesterfield County Department of Utilities
0 50 100 200 300 400 Feet
1 inch = 200 feet

Name: mrcalls
Date: 02/19/26
Project: 2026-0000

