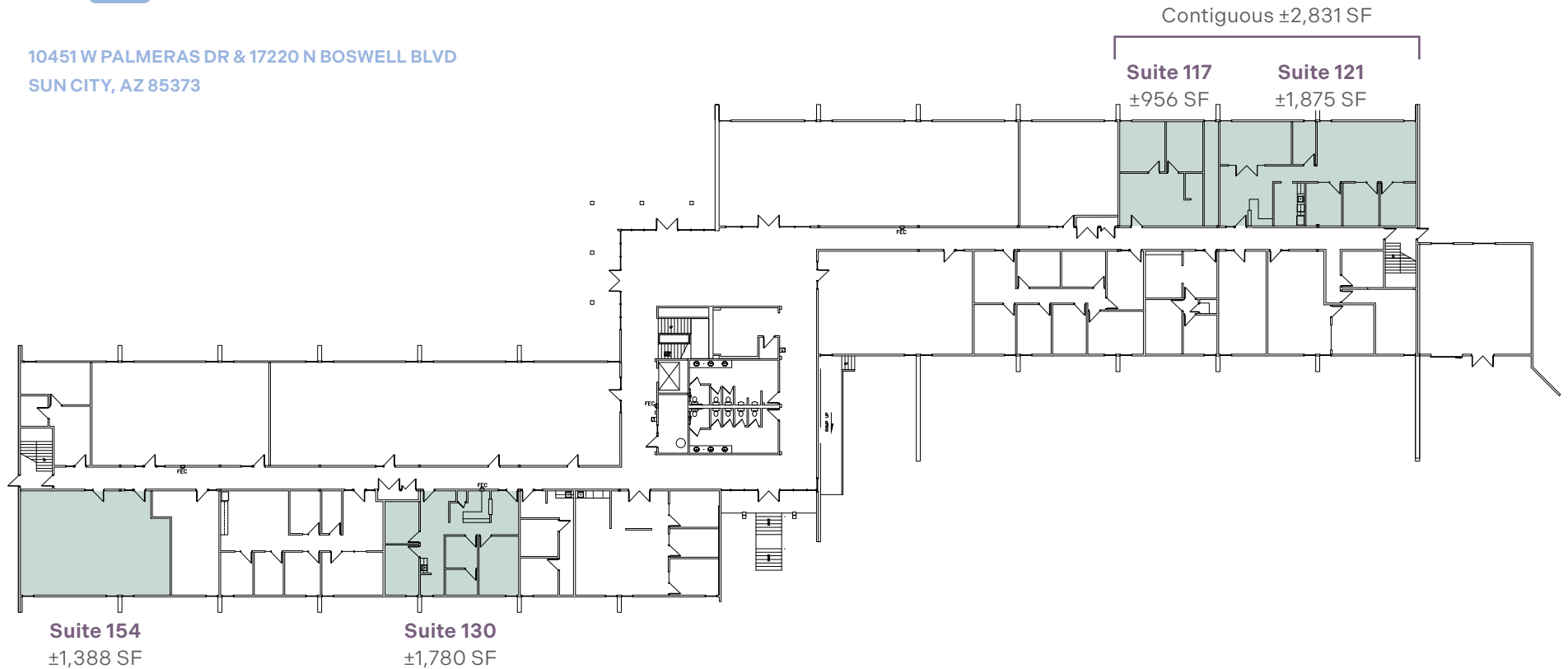




# 10451 North 1<sup>st</sup> Floor

10451 W PALMERAS DR & 17220 N BOSWELL BLVD  
SUN CITY, AZ 85373



## Medical Leasing

**PHILIP WURTH**

+1 602 369 9261

philip.wurth@cbre.com

**ETHAN DIEDRICHSEN**

+1 402 689 3895

ethan.diedrichsen@cbre.com

## Office Leasing

**ASHLEY BROOKS, JR.**

+1 602 735 1758

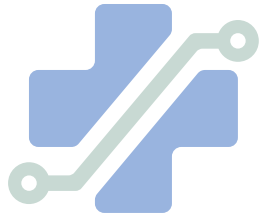
ashley.brooks@cbre.com

**JASMINA BAYS**

+1 602 735 5262

jasmina.bays@cbre.com

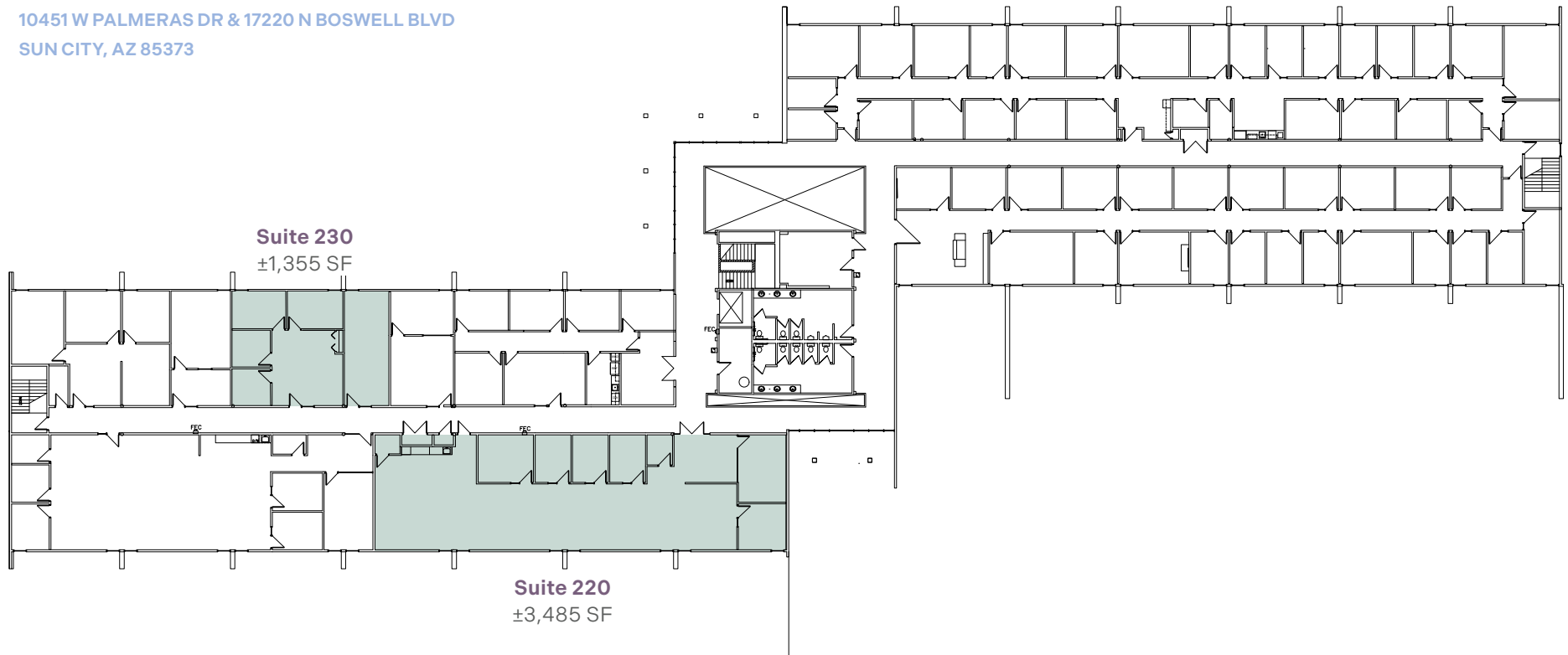




# Bell Plaza

## 10451 North 2<sup>nd</sup> Floor

10451 W PALMERAS DR & 17220 N BOSWELL BLVD  
SUN CITY, AZ 85373



### Medical Leasing

**PHILIP WURTH**

+1 602 369 9261

philip.wurth@cbre.com

**ETHAN DIEDRICHSEN**

+1 402 689 3895

ethan.diedrichsen@cbre.com

### Office Leasing

**ASHLEY BROOKS, JR.**

+1 602 735 1758

ashley.brooks@cbre.com

**JASMINA BAYS**

+1 602 735 5262

jasmina.bays@cbre.com



# Bell Plaza

## 17220 South 1<sup>st</sup> Floor

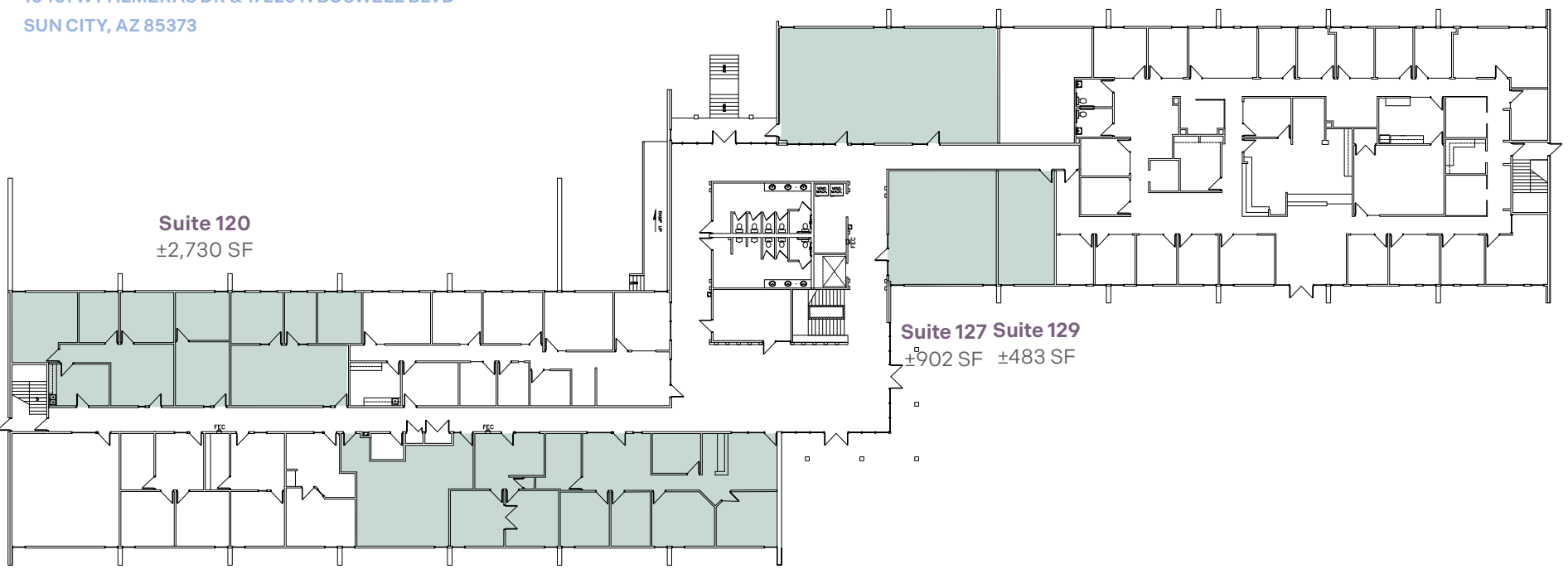
10451 W PALMERAS DR & 17220 N BOSWELL BLVD  
SUN CITY, AZ 85373

**Suite 126**  
±1,850 SF

**Suite 120**  
±2,730 SF

**Suite 127 Suite 129**  
±902 SF ±483 SF

**Suite 101**  
±3,470 SF



### Medical Leasing

**PHILIP WURTH**  
+1 602 369 9261  
philip.wurth@cbre.com

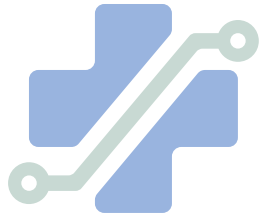
**ETHAN DIEDRICHSEN**  
+1 402 689 3895  
ethan.diedrichsen@cbre.com

### Office Leasing

**ASHLEY BROOKS, JR.**  
+1 602 735 1758  
ashley.brooks@cbre.com

**JASMINA BAYS**  
+1 602 735 5262  
jasmina.bays@cbre.com

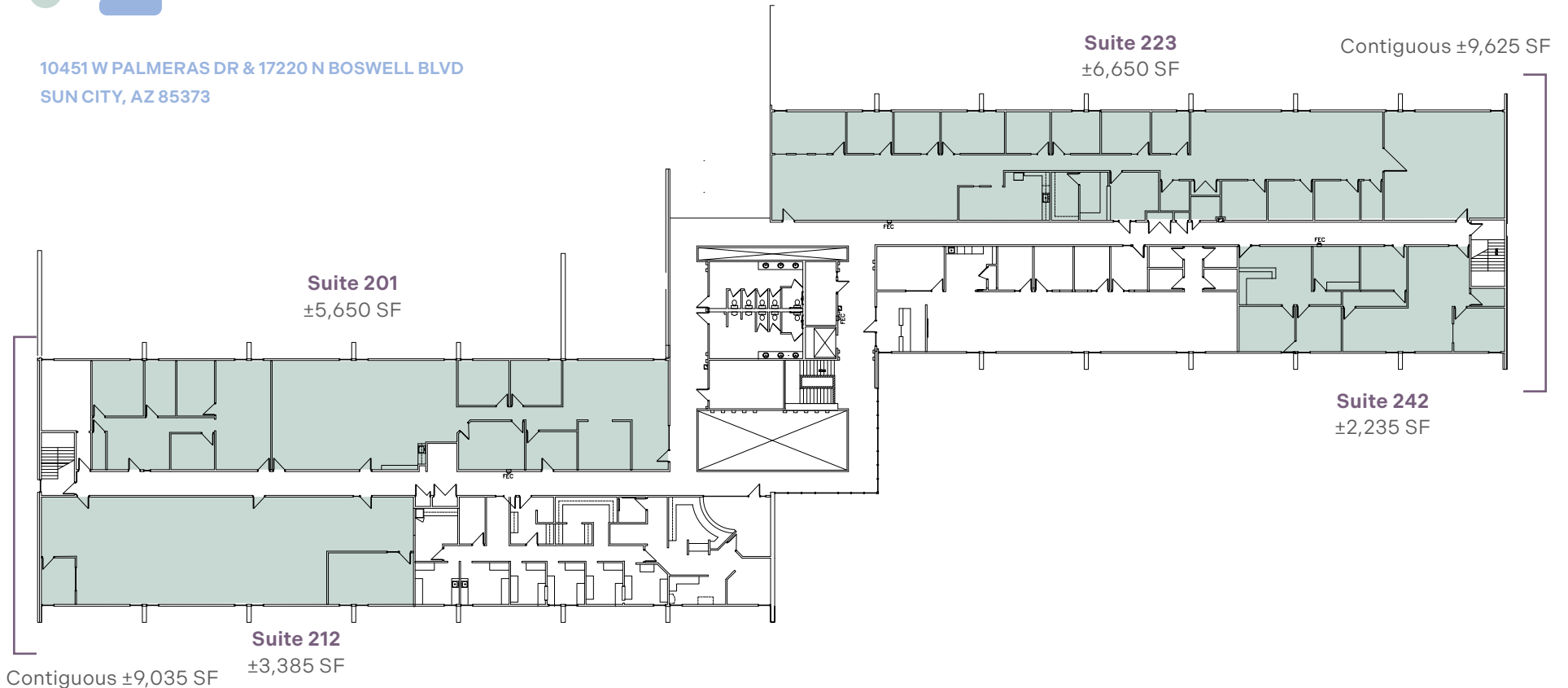




# Bell Plaza

## 17220 South 2<sup>nd</sup> Floor

10451 W PALMERAS DR & 17220 N BOSWELL BLVD  
SUN CITY, AZ 85373



### Medical Leasing

**PHILIP WURTH**  
+1 602 369 9261  
philip.wurth@cbre.com

**ETHAN DIEDRICHSEN**  
+1 402 689 3895  
ethan.diedrichsen@cbre.com

### Office Leasing

**ASHLEY BROOKS, JR.**  
+1 602 735 1758  
ashley.brooks@cbre.com

**JASMINA BAYS**  
+1 602 735 5262  
jasmina.bays@cbre.com

