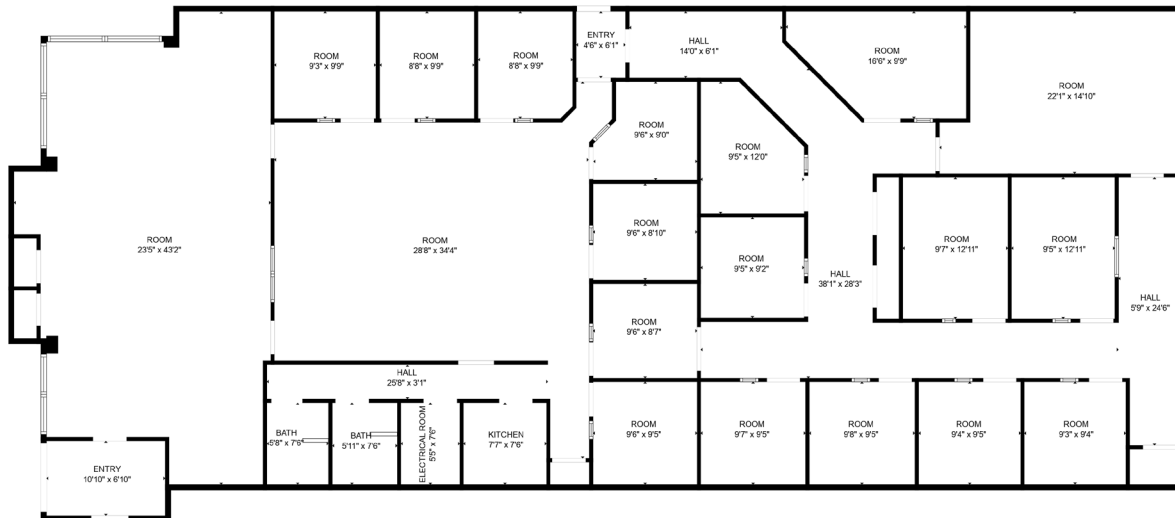


33W401 Roosevelt Rd | West Chicago, IL
5,000 SF



BUILDING/SPACE NOTES

- Flexible layouts
- Could be used for office or warehouse space
- Has pylon sign fronting Roosevelt Rd
- Fully conditioned space
- Great for industrial or office users



Ryan Moen, SIOR
630.480.6346
RMoen@VersaRES.com

Steven Rea
630.480.1780
RMoen@VersaRES.com

John Millner, CCIM
630.480.6342
RMoen@VersaRES.com

1 MID AMERICA PLAZA, 3RD FLOOR
OAKBROOK TERRACE, IL 60181
630.480.6413

EXCLUSIVELY LISTED BY
VERSA
REAL ESTATE SERVICES