

FOR SUBLEASE | 4TH FLOOR

CBRE

2 Berkeley Street

SUITE 403
6,015 SF



NICHOLAS POTKIDIS*
Vice President
T +1 647 338 9745
nicholas.potkidis@cbre.com

ELLIOTT ZOLF
Sales Representative
C +1 647 527 7025
elliott.zolf@cbre.com

*Sales Representative

2 Berkeley Street

PROPERTY OVERVIEW

Address
2 Berkeley Street

Suite
403

Size
6,015 SF

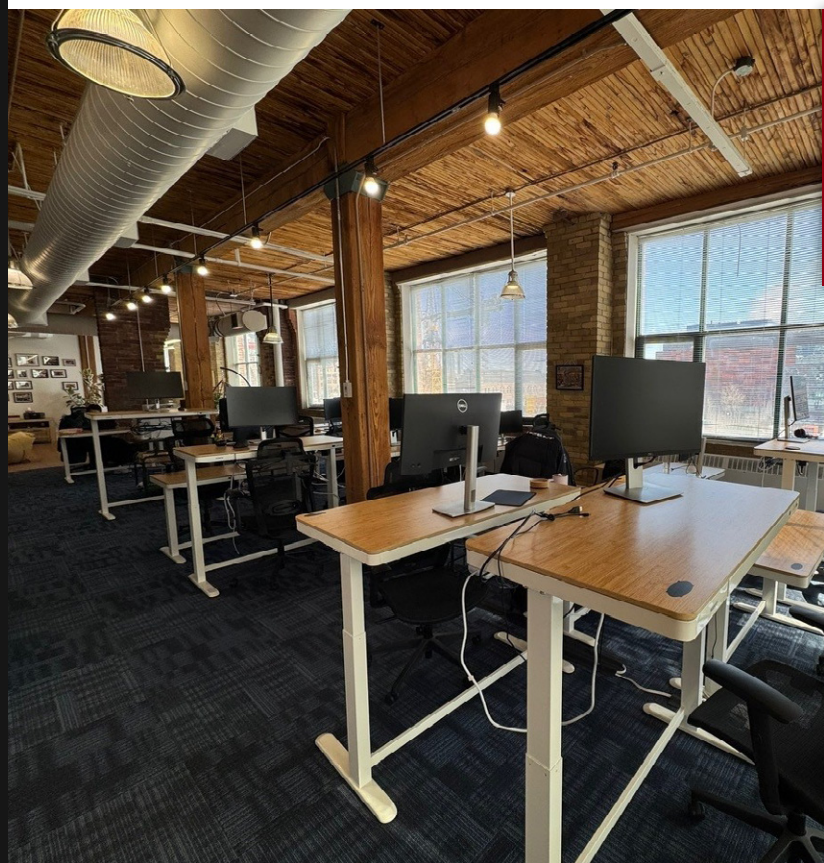
Asking Net Rent
Contact Listing Agents

Additional Rent
\$18.58 (2025 Estimate)

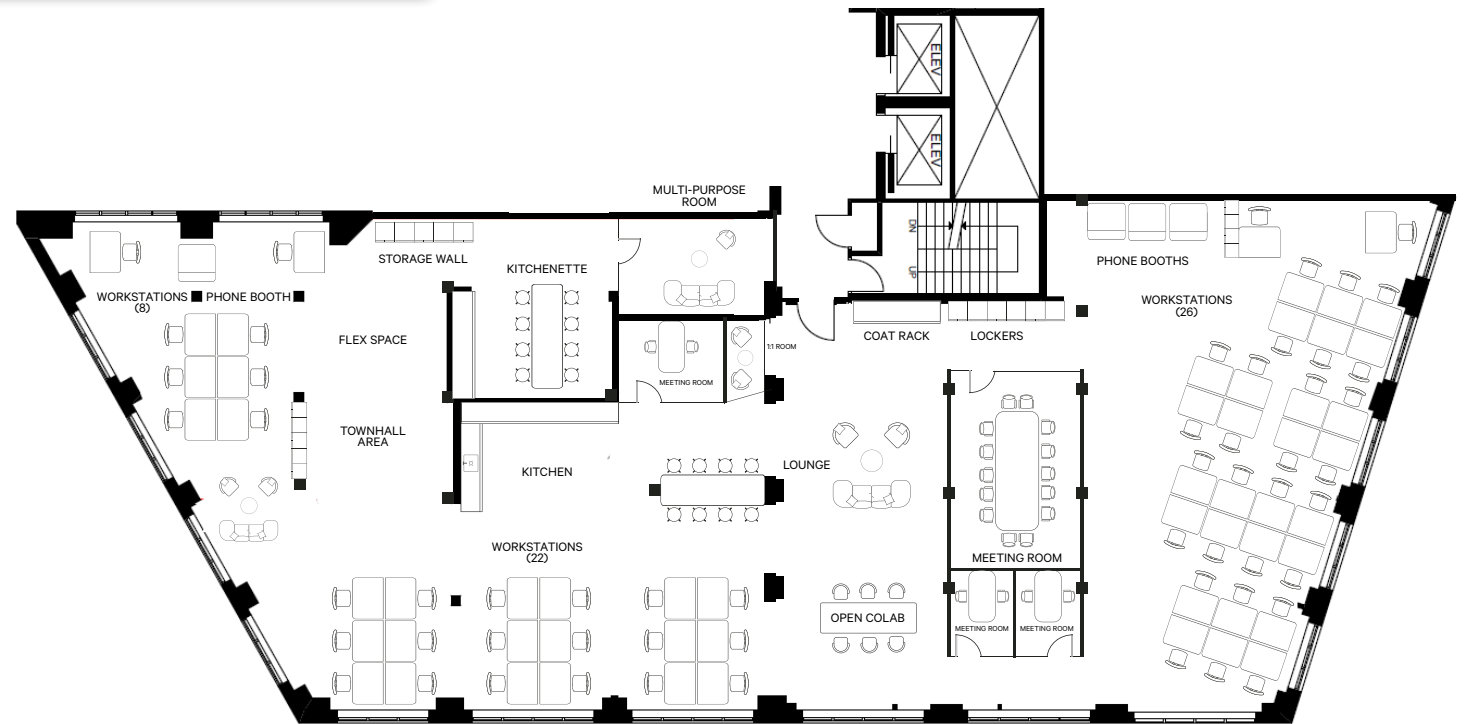
Sublease Expiry
March 30, 2028

Available
30-60 Days

Furniture
Negotiable



FLOOR PLAN



10-MINUTE STREETCAR TO TTC - KING STATION

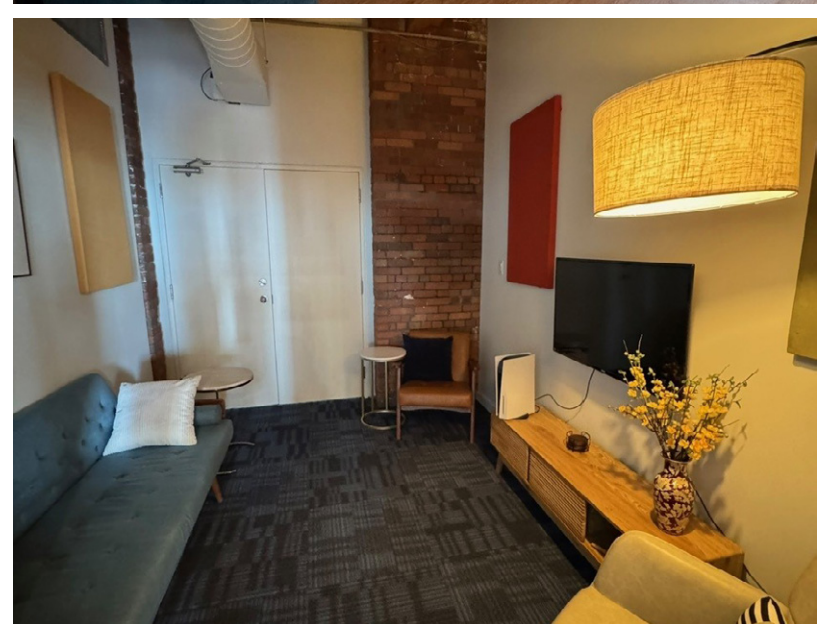
99
WALK SCORE

100
TRANSIT SCORE

99
BIKER SCORE



**SUITE
403
6,015 SF**



AMENITIES NEARBY

FOOD & DRINK

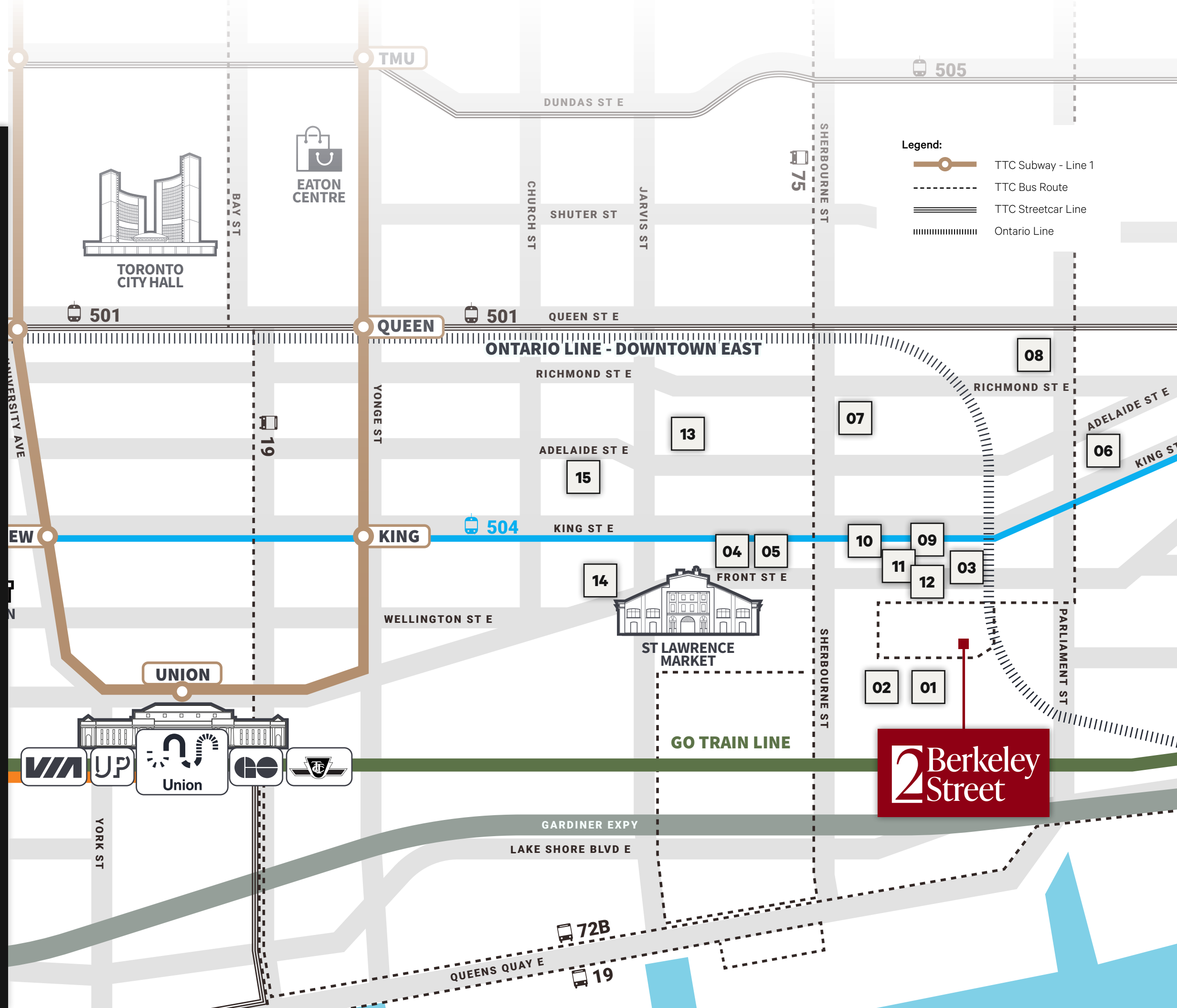
01. Berkeley Cafe
- St. Lawrence Cafe
02. Subway
- The Bhais Shawarma
- MOEGI Sushi
- Pizza Nova
- Cluck Clucks Chicken
03. Starbucks
04. Neo Coffee Bar
05. Ardo Coffee House
06. Reyna
07. Tim Hortons
08. Mengra Thai
09. Kinton Ramen
10. Firehouse Subs

SHOPPING

11. No Frills
- Dollarama
- LCBO

FITNESS

12. Body + Soul Fitness
13. Impact Fitness
14. F45 Training
15. 6S Fitness+



Legend:

- TTC Subway - Line 1
- TTC Bus Route
- TTC Streetcar Line
- Ontario Line

FOR SUBLEASE | 4TH FLOOR

Berkeley Street

NICHOLAS POTKIDIS*

Vice President
T +1 647 338 9745
nicholas.potkidis@cbre.com

ELLIOTT ZOLF

Sales Representative
C +1 647 527 7025
elliott.zolf@cbre.com

BERKELEY CASTLE

2
BERKELEY



CBRE Limited, Real Estate Brokerage, 145 King Street West, Suite 1100, Toronto, Ontario Canada, M5H 1J8 +1 416 362 2244, www.cbre.ca

*Sales Representative

This disclaimer shall apply to CBRE Limited, Real Estate Brokerage, and to all other divisions of the Corporation; to include all employees and independent contractors ("CBRE"). The information set out herein, including, without limitation, any projections, images, opinions, assumptions and estimates obtained from third parties (the "Information") has not been verified by CBRE, and CBRE does not represent, warrant or guarantee the accuracy, correctness and completeness of the Information. CBRE does not accept or assume any responsibility or liability, direct or consequential, for the Information or the recipient's reliance upon the Information. The recipient of the Information should take such steps as the recipient may deem necessary to verify the Information prior to placing any reliance upon the Information. The Information may change and any property described in the Information may be withdrawn from the market at any time without notice or obligation to the recipient from CBRE. CBRE and the CBRE logo are the service marks of CBRE Limited and/or its affiliated or related companies in other countries. All other marks displayed on this document are the property of their respective owners. All Rights Reserved.