

A-404 Available Space

CREATED ON
2025-01-30

LOCATION
800 Oak Ridge Turnpike
37830 Oak Ridge
Tennessee
US



Total area 1961.02 sq ft	Floors 1	Rooms 9	Conference room 1
------------------------------------	--------------------	-------------------	-----------------------------

Photos

13 Photos (see photos page)

Notes

Office/Medical

A-404 Available Space

800 Oak Ridge Turnpike, 37830 Oak Ridge, Tennessee, US
TOTAL AREA: 1961.02 sq ft • LIVING AREA: 1961.02 sq ft • FLOORS: 1 • ROOMS: 9



▼ Photos/A-404 Available Space



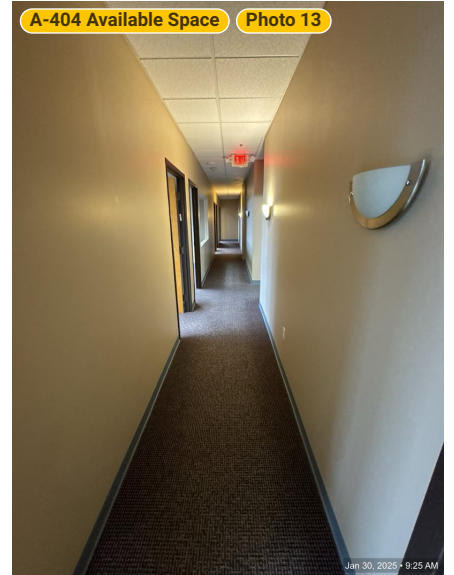
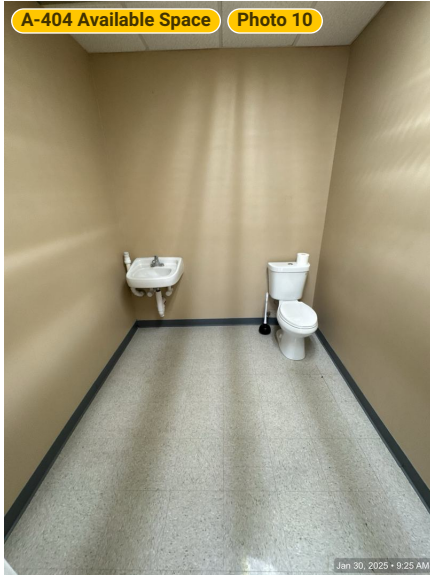
THIS FLOOR PLAN IS PROVIDED WITHOUT WARRANTY OF ANY KIND. SENSOPIA DISCLAIMS ANY WARRANTY INCLUDING, WITHOUT LIMITATION, SATISFACTORY QUALITY OR ACCURACY OF DIMENSIONS.

A-404 Available Space

800 Oak Ridge Turnpike, 37830 Oak Ridge, Tennessee, US
TOTAL AREA: 1961.02 sq ft • LIVING AREA: 1961.02 sq ft • FLOORS: 1 • ROOMS: 9



▼ Photos/A-404 Available Space



THIS FLOOR PLAN IS PROVIDED WITHOUT WARRANTY OF ANY KIND. SENSOPIA DISCLAIMS ANY WARRANTY INCLUDING, WITHOUT LIMITATION, SATISFACTORY QUALITY OR ACCURACY OF DIMENSIONS.

A-404 Available Space

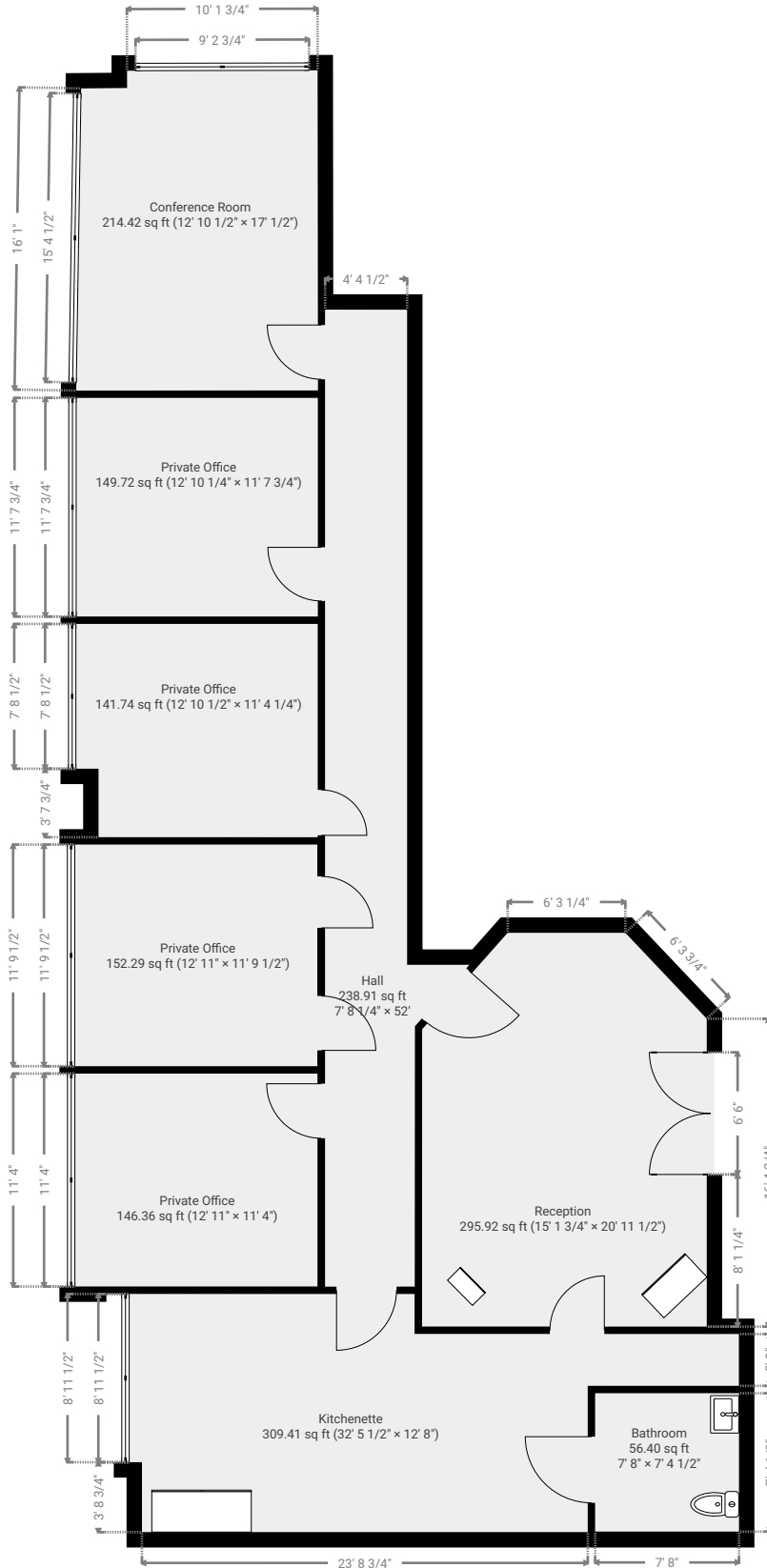
800 Oak Ridge Turnpike, 37830 Oak Ridge, Tennessee, US

TOTAL AREA: 1961.02 sq ft • LIVING AREA: 1961.02 sq ft • FLOORS: 1 • ROOMS: 9



▼ 4th Floor

TOTAL AREA: 1961.02 sq ft • LIVING AREA: 1961.02 sq ft • ROOMS: 9



THIS FLOOR PLAN IS PROVIDED WITHOUT WARRANTY OF ANY KIND. SENSOPIA DISCLAIMS ANY WARRANTY INCLUDING, WITHOUT LIMITATION, SATISFACTORY QUALITY OR ACCURACY OF DIMENSIONS.



1:117
Page 4/9

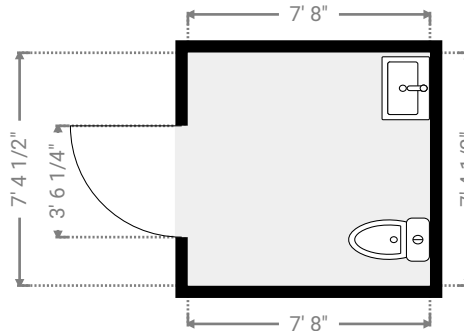
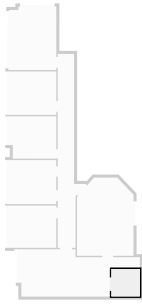
A-404 Available Space

800 Oak Ridge Turnpike, 37830 Oak Ridge, Tennessee, US
TOTAL AREA: 1961.02 sq ft • LIVING AREA: 1961.02 sq ft • FLOORS: 1 • ROOMS: 9



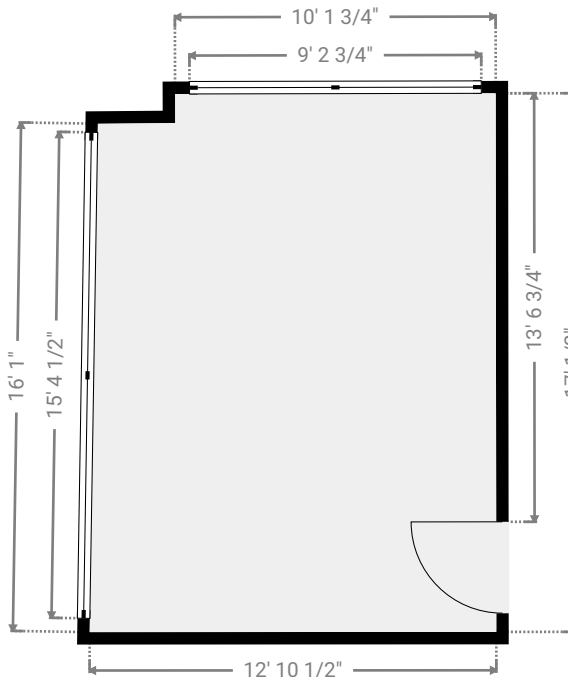
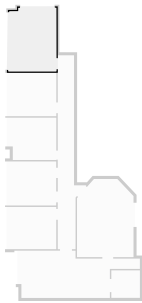
▼ Bathroom 4th Floor

WIDTH: 7' 8" • LENGTH: 7' 4 1/2" • CEILING HEIGHT: 8' 11 1/2"
AREA: 56.40 sq ft • PERIMETER: 30' 1/2"

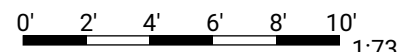


▼ Conference Room 4th Floor

WIDTH: 12' 10 1/2" • LENGTH: 17' 1/2" • CEILING HEIGHT: 8' 11 1/2"
AREA: 214.42 sq ft • PERIMETER: 59' 6 1/4"



THIS FLOOR PLAN IS PROVIDED WITHOUT WARRANTY OF ANY KIND. SENSOPIA DISCLAIMS ANY WARRANTY INCLUDING, WITHOUT LIMITATION, SATISFACTORY QUALITY OR ACCURACY OF DIMENSIONS.



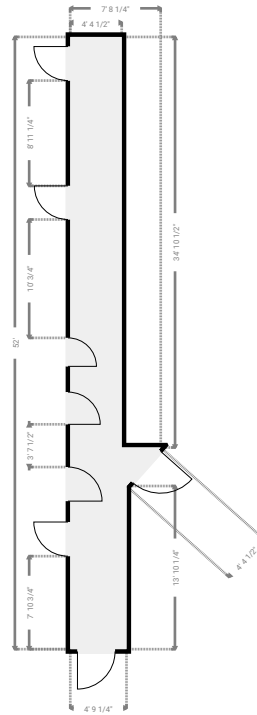
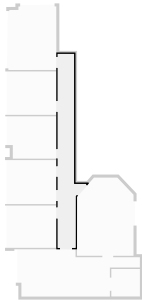
A-404 Available Space

800 Oak Ridge Turnpike, 37830 Oak Ridge, Tennessee, US
TOTAL AREA: 1961.02 sq ft • **LIVING AREA:** 1961.02 sq ft • **FLOORS:** 1 • **ROOMS:** 9



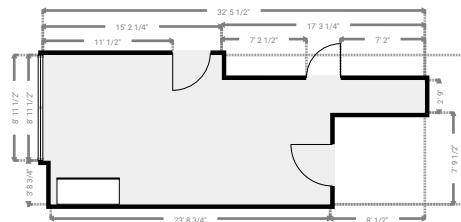
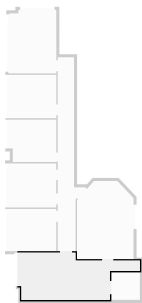
▼ Hall 4th Floor

WIDTH: 7' 8 1/4" • **LENGTH:** 52' • **CEILING HEIGHT:** 8' 11 1/2"
AREA: 238.91 sq ft • **PERIMETER:** 117' 7"



▼ Kitchenette 4th Floor

WIDTH: 32' 5 1/2" • **LENGTH:** 12' 8" • **CEILING HEIGHT:** 8' 11 1/2"
AREA: 309.41 sq ft • **PERIMETER:** 90' 3"



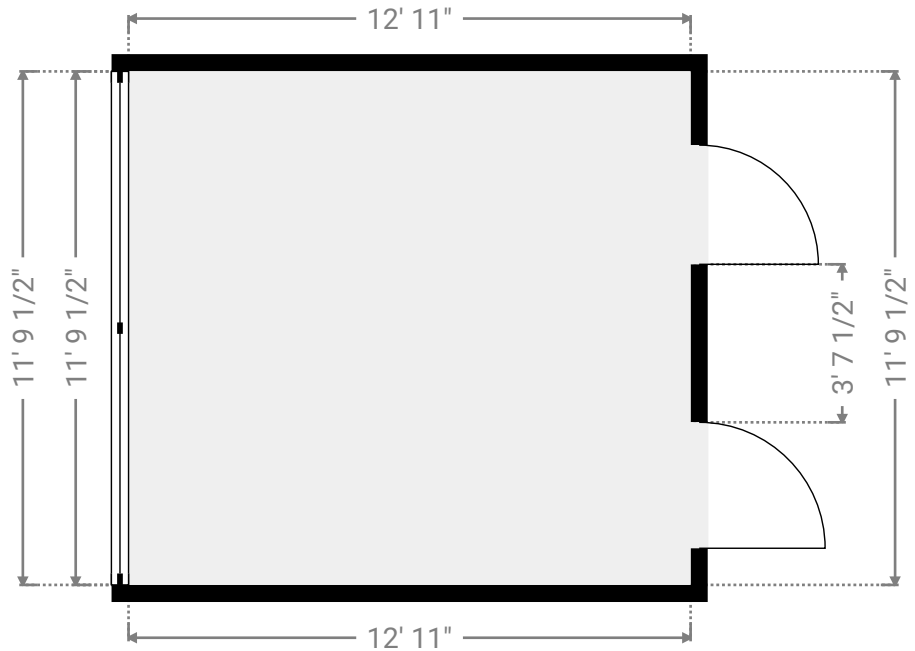
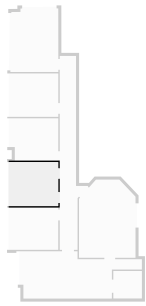
A-404 Available Space

800 Oak Ridge Turnpike, 37830 Oak Ridge, Tennessee, US
TOTAL AREA: 1961.02 sq ft • LIVING AREA: 1961.02 sq ft • FLOORS: 1 • ROOMS: 9



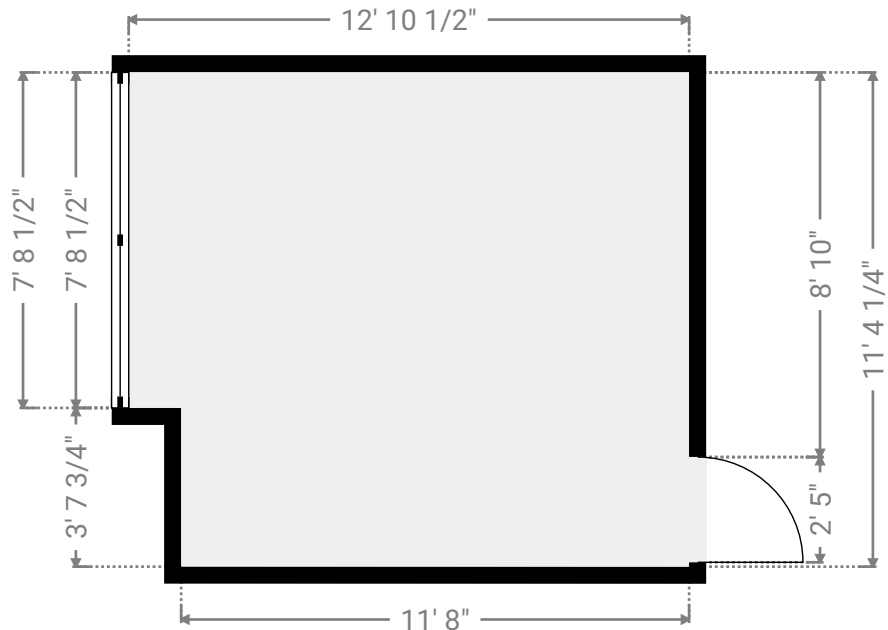
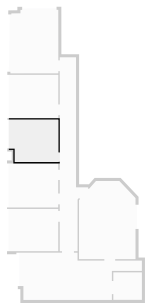
▼ Private Office 4th Floor

WIDTH: 12' 11" • LENGTH: 11' 9 1/2" • CEILING HEIGHT: 8' 11 1/2"
AREA: 152.29 sq ft • PERIMETER: 49' 5"



▼ Private Office 4th Floor

WIDTH: 12' 10 1/2" • LENGTH: 11' 4 1/4" • CEILING HEIGHT: 8' 11 1/2"
AREA: 141.74 sq ft • PERIMETER: 48' 5 1/2"



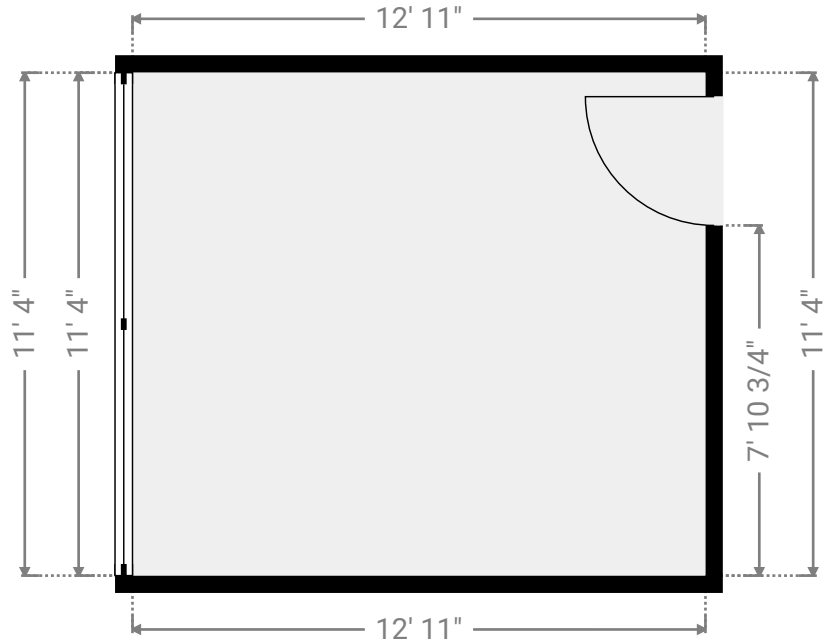
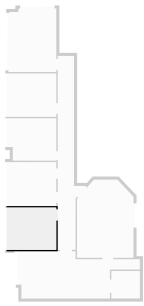
A-404 Available Space

800 Oak Ridge Turnpike, 37830 Oak Ridge, Tennessee, US
TOTAL AREA: 1961.02 sq ft • LIVING AREA: 1961.02 sq ft • FLOORS: 1 • ROOMS: 9



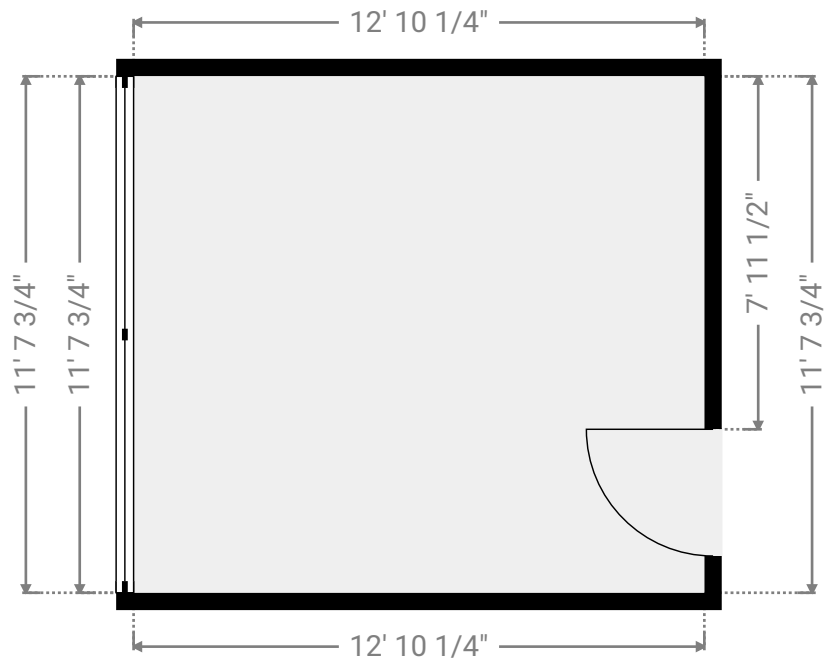
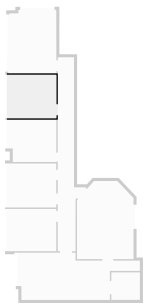
▼ Private Office 4th Floor

WIDTH: 12' 11" • LENGTH: 11' 4" • CEILING HEIGHT: 8' 11 1/2"
AREA: 146.36 sq ft • PERIMETER: 48' 6"



▼ Private Office 4th Floor

WIDTH: 12' 10 1/4" • LENGTH: 11' 7 3/4" • CEILING HEIGHT: 8' 11 1/2"
AREA: 149.72 sq ft • PERIMETER: 49'



THIS FLOOR PLAN IS PROVIDED WITHOUT WARRANTY OF ANY KIND. SENSOPIA DISCLAIMS ANY WARRANTY INCLUDING, WITHOUT LIMITATION, SATISFACTORY QUALITY OR ACCURACY OF DIMENSIONS.



A-404 Available Space

800 Oak Ridge Turnpike, 37830 Oak Ridge, Tennessee, US
TOTAL AREA: 1961.02 sq ft • LIVING AREA: 1961.02 sq ft • FLOORS: 1 • ROOMS: 9



▼ Reception 4th Floor

WIDTH: 15' 1 3/4" • LENGTH: 20' 11 1/2" • CEILING HEIGHT: 8' 11 1/2"
AREA: 295.92 sq ft • PERIMETER: 66' 9 1/2"

