

# 192 East Bay, Suite 210

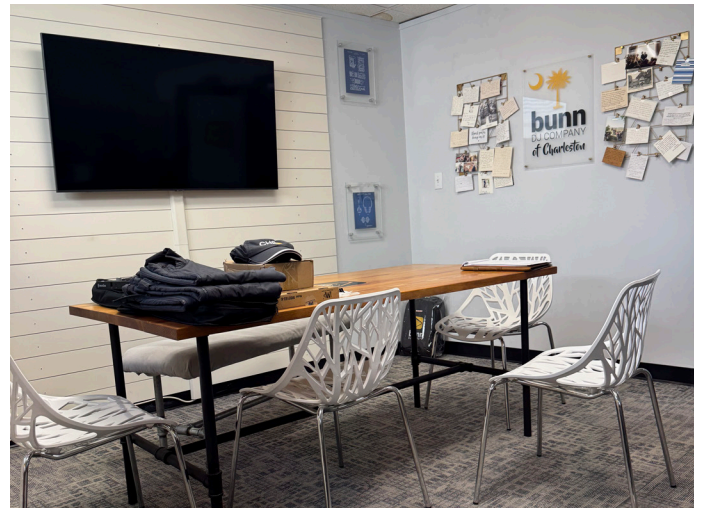
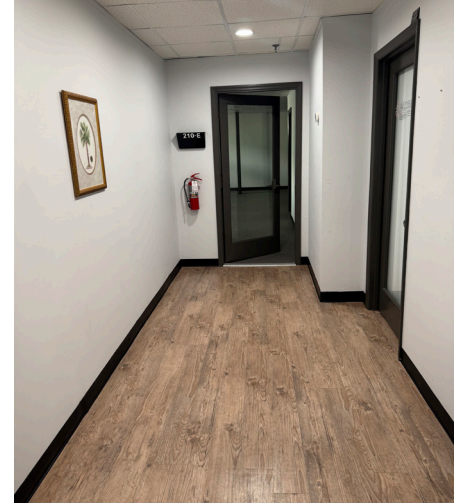
±2,136 SF Office Suite

Charleston  
South Carolina, 29401

Located in the heart of Downtown Charleston



# Interior Photos



# Location



# Highlights

192 East Bay Street is a three-story building in the French Quarter of Downtown Charleston featuring office suites on its upper two floors. On the ground floor, Slightly North of Broad (S.N.O.B.), a well-known Charleston restaurant, has been serving Southern cuisine for over 30 years

- + Beautiful views of downtown Charleston
- + Numerous walkable entertainment, shopping and dining locations
- + The building entrance has large mirrors and exposed brick walls leading to the elevator
- + Regime fees are \$2,800/month
- + Parking space located at Church and Market available at \$180/mo
- + Suite 210 consists of five executive suites A-E.
- + Space A (208 SF) is currently leased to a tenant on a month-to-month basis for \$880/mo
- + Space B (180 SF) has a 1-year lease with an option to renew for a 2nd year paying \$550/mo
- + Suite C (400 SF) is owner leased month to month at a current rate of \$1,400/mo
- + Suite D (148 SF) is currently listed 'For Lease'
- + Suite E (1168 SF) is currently vacant



±2,136

Square Feet

\$525,000

Sale Price

## Contact Us

### Charles Carmody

Senior Vice President

+1 843 577 1155

charles.carmody@cbre.com

### Ryan Carmody

Vice President

+1 843 577 1162

ryan.carmody@cbre.com

© 2026 CBRE, Inc. All rights reserved. This information has been obtained from sources believed reliable, but has not been verified for accuracy or completeness. You should conduct a careful, independent investigation of the property and verify all information. Any reliance on this information is solely at your own risk. CBRE and the CBRE logo are service marks of CBRE, Inc. All other marks displayed on this document are the property of their respective owners, and the use of such logos does not imply any affiliation with or endorsement of CBRE. Photos herein are the property of their respective owners. Use of these images without the express written consent of the owner is prohibited.