



HYMEADOW OFFICE PARK

12343 HYMEADOW DR, SUITE 3A, AUSTIN, TX 78750

FOR LEASE

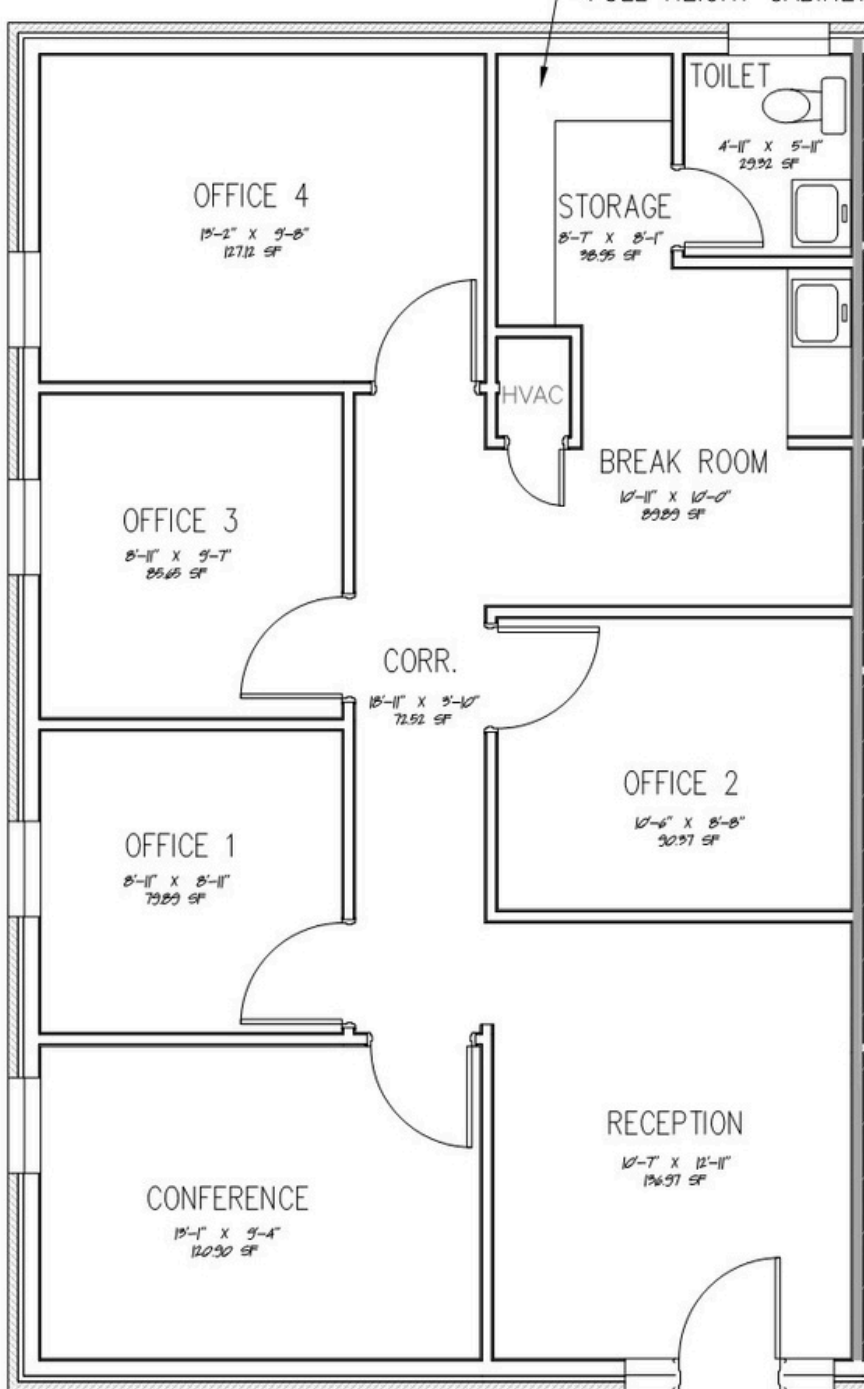
[VIDEO TOUR LINK - CLICK HERE](#)



- SIZE : 1,010 SF
- GROSS RENT : \$2,200 PER MONTH
- WITH 3% ANNUAL INCREASES
- SEPARATE TENANT EXPENSES :
ELECTRICITY & JANITORIAL
- TERM : 2-3 YEARS PREFERRED
- AVAILABILITY : IMMEDIATELY



CHAD JEWELL // 512-633-7703 MOBILE
CHAD@AUSTINOFFICESPACE.COM



SUITE DETAILS :

- PRIVATE OFFICE LAYOUT
- NICE RECEPTION AREA + 5 OFFICES
- ONE OFFICE LARGE ENOUGH FOR A CONFERENCE ROOM
- KITCHENETTE WITH ROOM FOR A FULL SIZE FRIDGE
- PRIVATE RESTROOM
- AMPLE CABINET STORAGE

PROPERTY DETAILS :

- FRESHLY PAINTED AND READY FOR MOVE-IN
- EASY FRONT DOOR PARKING
- 4 RESERVED PARKING SPACES WITH ADDITIONAL UNRESERVED AVAILABLE
- 24/7 HVAC WITH YOUR OWN CONTROLS