

OFFICE-FLEX SPACE FOR LEASE

2500 Lehigh Avenue

GLENVIEW, ILLINOIS



NAIHiffman
Commercial Real Estate Services, Worldwide

Jason J. Wurtz
Executive Vice President
630 693 0692
jwurtz@hiffman.com

Bennett Baker
Associate Broker
630 317 0751
bbaker@hiffman.com

2500 LEHIGH AVENUE GLENVIEW | FOR LEASE



31,100 SF Office-Flex Building Available

Single Tenant or Divisible to 5,000+ SF

PROPERTY HIGHLIGHTS

31,100 RSF, Two-Story Class A Office-Flex Building conveniently situated in North Shore Glenview.

- 23,506 SF - 31,100 SF of Office
- 7,968 SF – 15,868 SF of Warehouse
- Furniture Available
- Existing Executive Offices & Board Room
- Abundant On-Site Parking
- 120/208 3 phase for wire 1200A
- High image market with an amazing walkability score to nearby nature areas



WALKING DISTANCE TO
DINING, SHOPPING, AND
METRA



MONUMENT SIGNAGE



EASY ACCESS TO I-294 & I-94
VIA WILLOW ROAD EXCHANGE



0.7 MILES TO METRA
MD-M LINE GLENVIEW
STATION

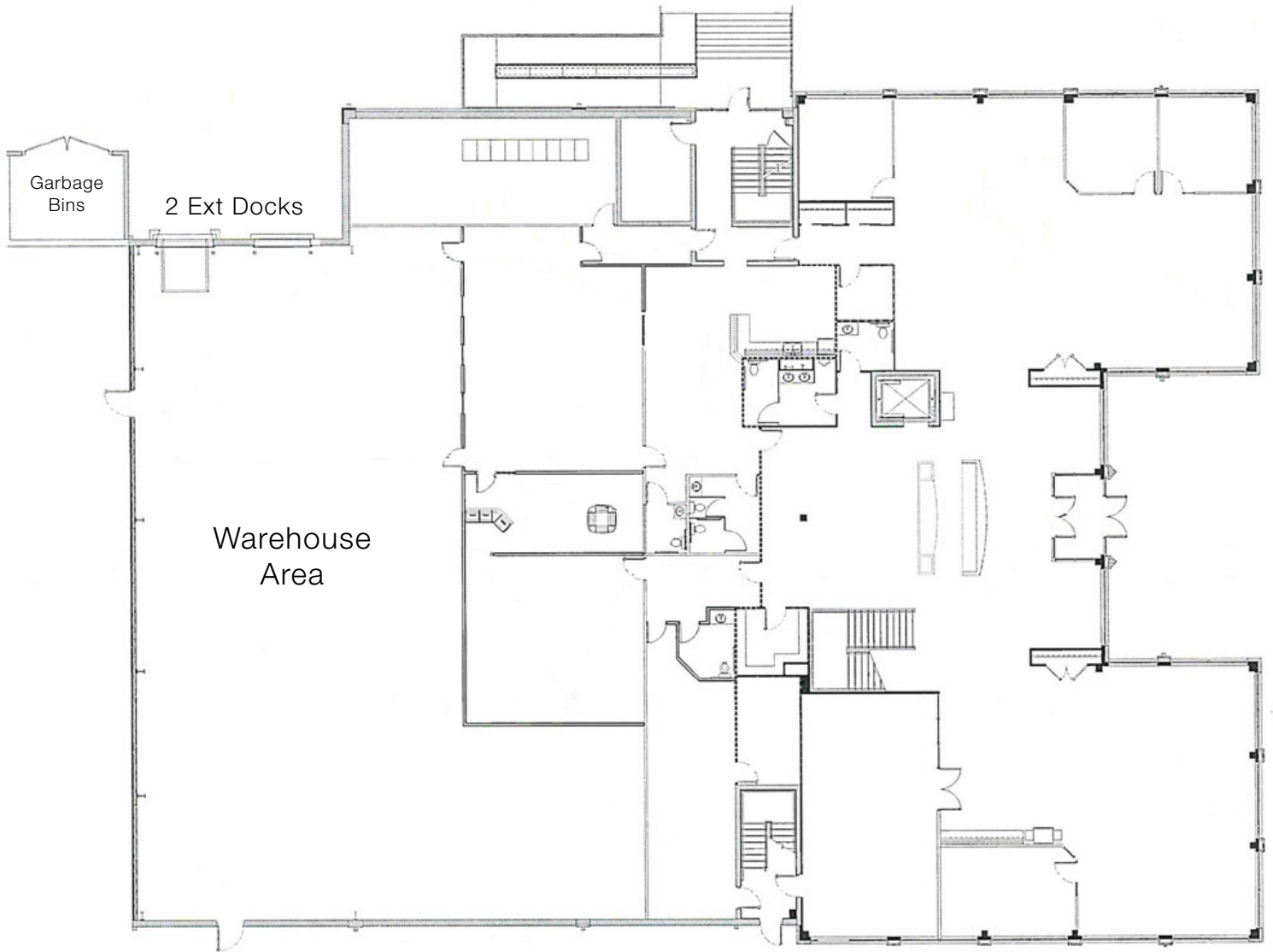


TWO EXCLUSIVE
TRUCK HIGH DOCKS

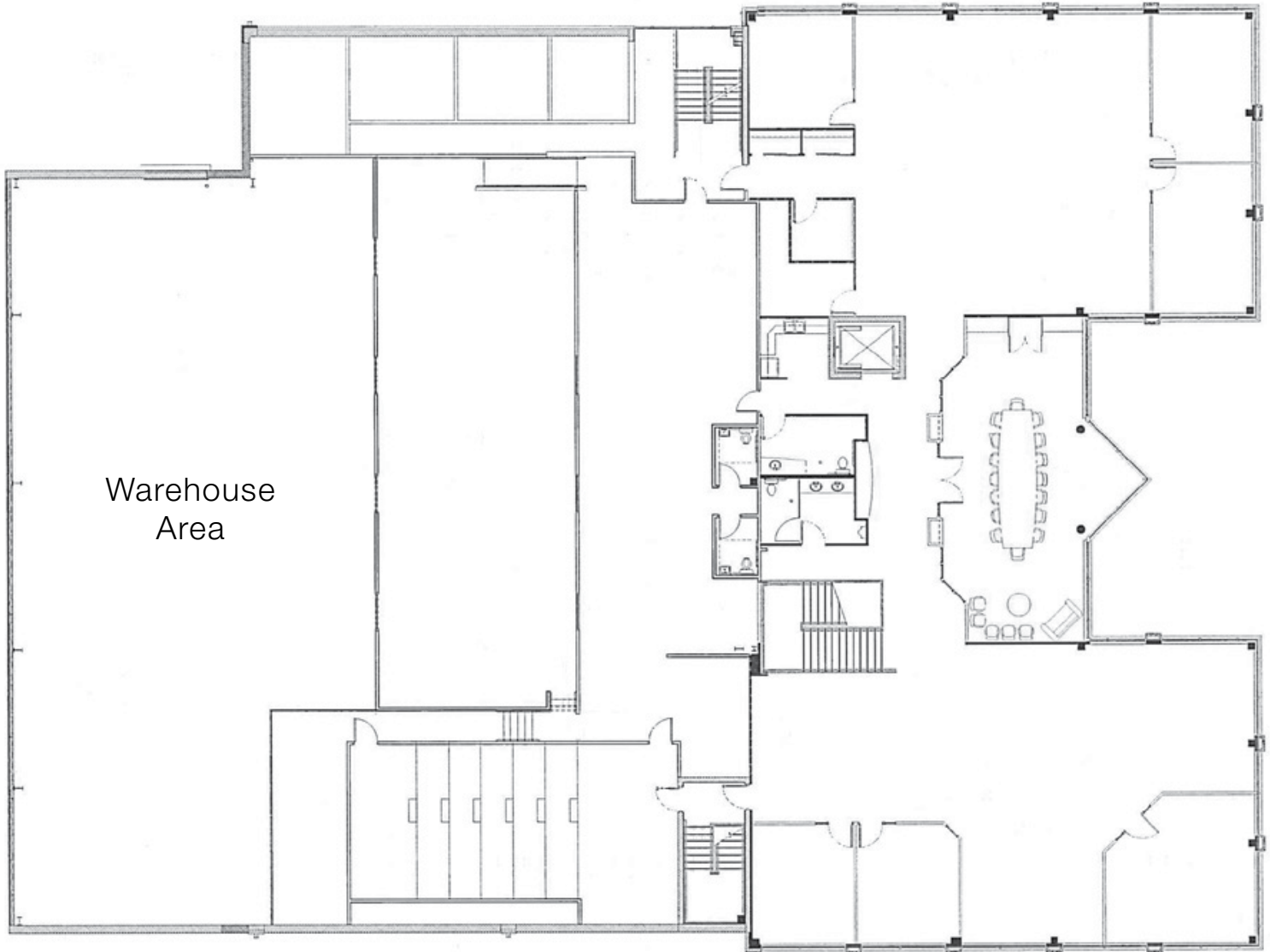


2.6 / 1,000 SF
PARKING RATIO

1st FLOOR



2nd FLOOR



2500 LEHIGH AVENUE GLENVIEW | FOR LEASE



2500 LEHIGH AVENUE GLENVIEW | FOR LEASE

LOCATION, LOCATION, LOCATION

Immediate walkable access to the best amenities in the area, including over 60 retail and restaurant options and outdoor amenities

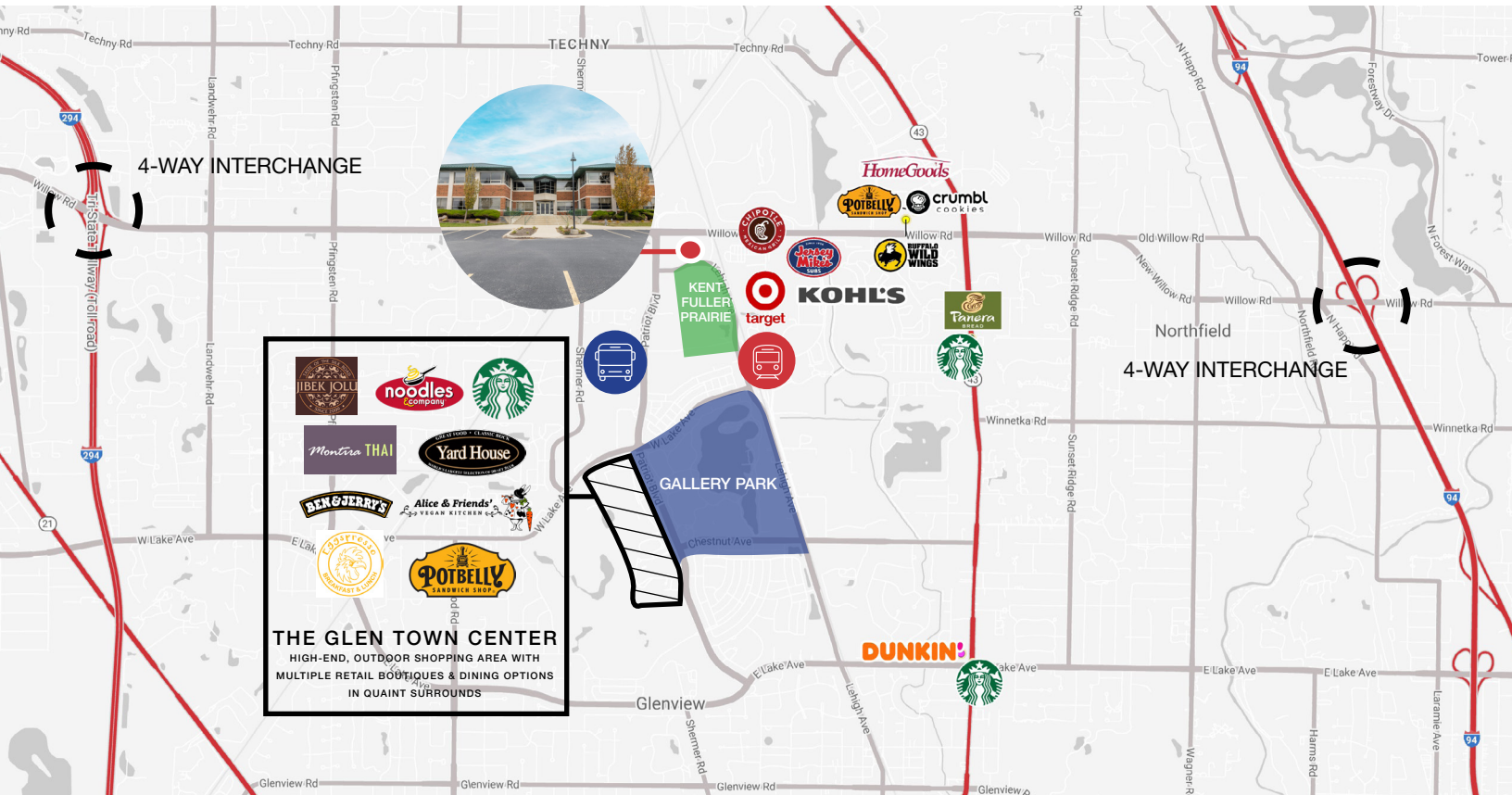
- Walkable (0.5 miles) to Metra MD-M Line Glenview Station
- Pace Bus Stop located in front of property on Patriot Boulevard
- Walkable to **Kent Fuller Prairie Reserve** (32 acre nature preserve located directly behind 2601 Patriot) & **Gallery Park** (140 acre park, biking/walking paths and pond)
- 2.5 miles to I-294 & Willow Road 4-way interchange
- 3 miles to I-94 & Willow Road 4-way interchange
- Over 60 retail & restaurant options within walking distance



THE KENT FULLER AIR STATION PRAIRIE



GALLERY PARK





Jason Wurtz

630 693 0692

jwurtz@hiffman.com

Bennett Baker

630 317 0751

bbaker@hiffman.com



ONE OAKBROOK TERRACE SUITE 400
OAKBROOK TERRACE IL 60181

HIFFMAN.COM
630 932 1234