



MEDICAL / OFFICE SPACE FOR LEASE

129 CLOVE BRANCH ROAD, EAST FISHKILL, NY 12533



MEDICAL / OFFICE NEAR TACONIC STATE PARKWAY

ADDRESS: 129 Clove Branch Road
East Fishkill, NY 12533
(Near NYS Route 82)

LOCATION: **Taconic State Parkway**
(2.1 Miles - 4 Minutes)
Interstate 84 16N/S
(6 Miles - 9 Minutes)

LOT SIZE: 3.3 ± Acres

ZONING: B-1: General Business District

SPACE AVAILABLE: Space A: 3,300 ± SF
Space B: 1,000 ± SF

ASKING RENT: \$27 Per SF



PROPERTY OVERVIEW

CR Properties is pleased to offer Office and Storage space For Lease. Located on 129 Clove Branch Road in East Fishkill, 4 minutes from the Taconic State Parkway & 6 miles from Interstate 84 16N/S. The office space has a private entrance. There is 300'+ of frontage on County Route 29, views of Red Wing Park, and handicap accessibility with walk-in entrance and on-site parking.



CR Properties Group, LLC
295 Main Street
Poughkeepsie, NY 12601
www.crproperties.com



ALL DATA BELIEVED TO BE ACCURATE BUT NOT WARRANTED

For more information:

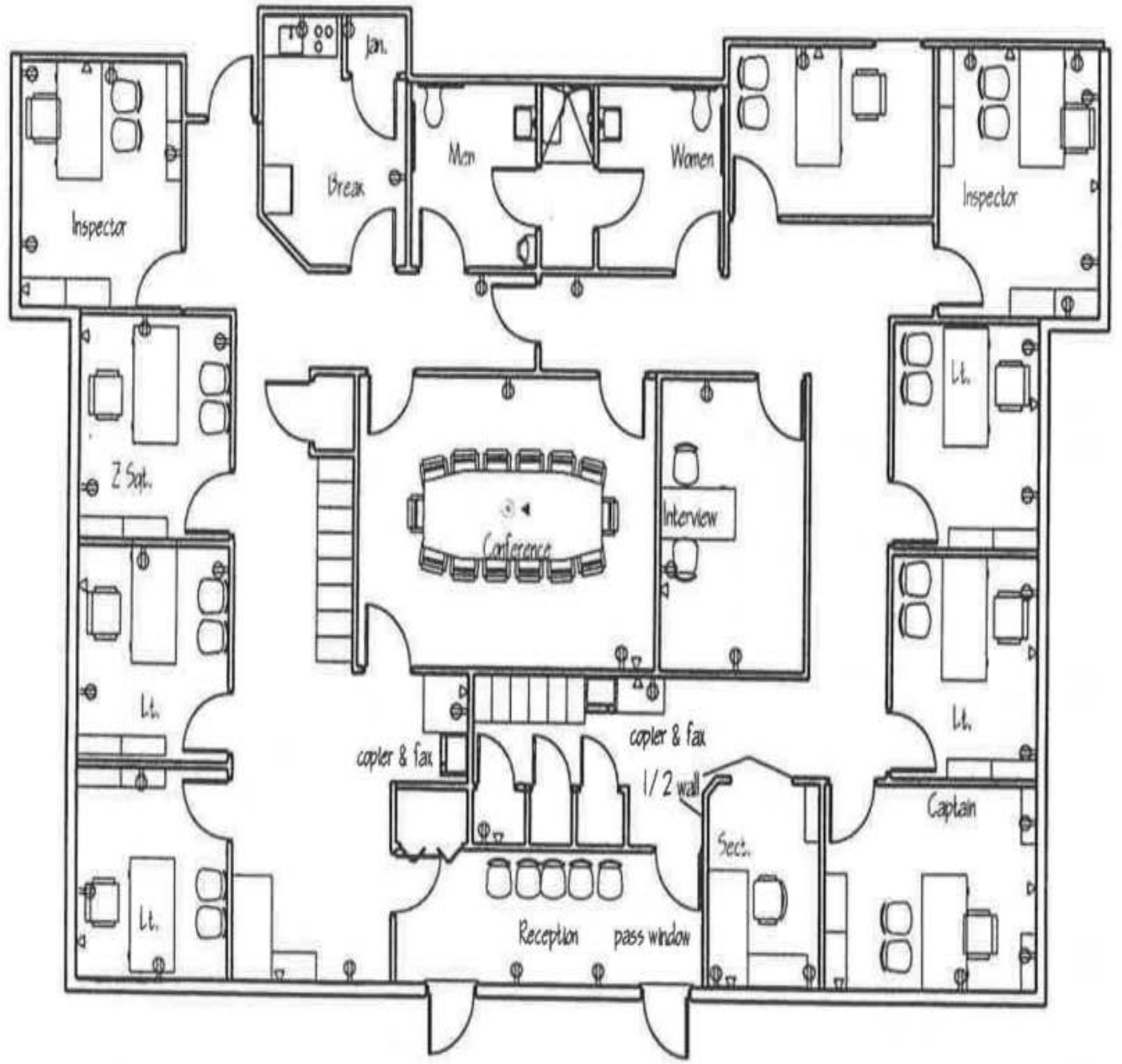
Thomas M. Cervone
845.485.3100
tom@crproperties.com



FLOOR PLAN

129 CLOVE BRANCH ROAD, EAST FISHKILL, NY 12533

RECEPTION ROOM, PRIVATE OFFICES, KITCHEN, BATHROOMS



CR Properties Group, LLC
295 Main Street
Poughkeepsie, NY 12601
www.crproperties.com



ALL DATA BELIEVED TO BE ACCURATE BUT NOT WARRANTED

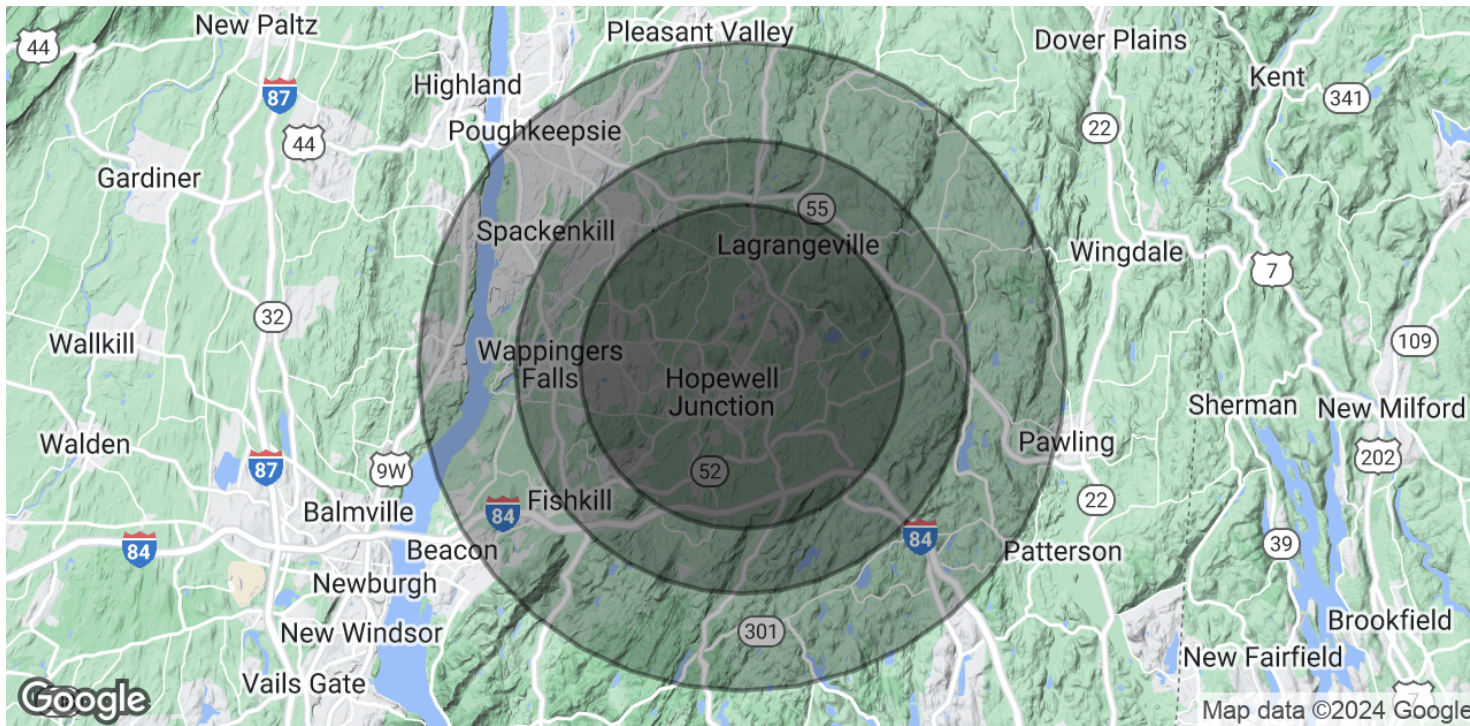
For more information:
Thomas M. Cervone
845.485.3100
tom@crproperties.com



AREA DEMOGRAPHICS & STATISTICS

129 CLOVE BRANCH ROAD, EAST FISHKILL, NY 12533

HOUSEHOLD | POPULATION | INCOME VALUES



POPULATION

	5 MILES	7 MILES	10 MILES
Total Population	47,985	88,629	174,671
Average Age	39.8	39.8	39.5
Average Age (Male)	39.1	38.6	38.3
Average Age (Female)	39.3	39.4	39.9

HOUSEHOLDS & INCOME

	5 MILES	7 MILES	10 MILES
Total Households	15,355	28,412	59,906
# of Persons per HH	3.1	3.1	2.9
Average HH Income	\$109,011	\$107,454	\$98,881
Average House Value	\$380,416	\$379,157	\$369,284

* Demographic data derived from 2020 ACS - US Census



CR Properties Group, LLC
 295 Main Street
 Poughkeepsie, NY 12601
www.crproperties.com



ALL DATA BELIEVED TO BE ACCURATE BUT NOT WARRANTED

For more information:

Thomas M. Cervone
 845.485.3100
tom@crproperties.com