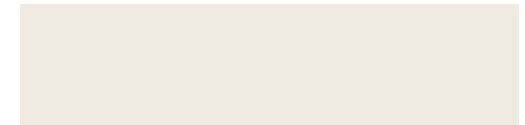
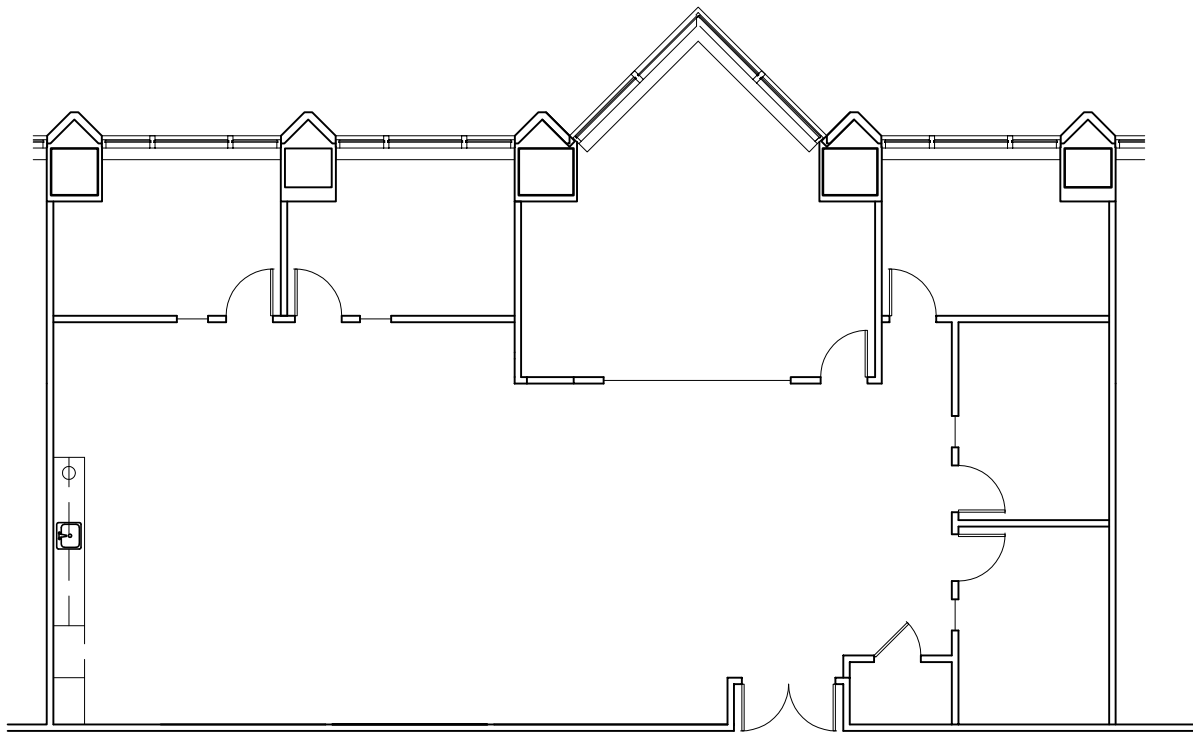
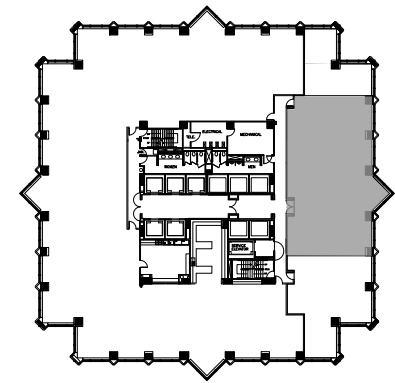


# TRUIST PLACE

401 East Jackson Street | Tampa

Suite 1650 | 3,155 SF

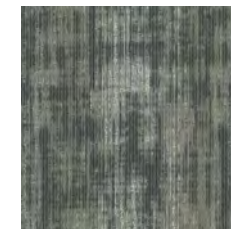
*Spec Suite*



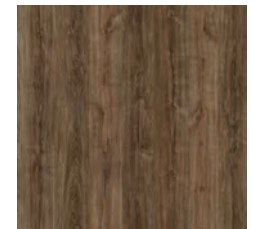
PAINT



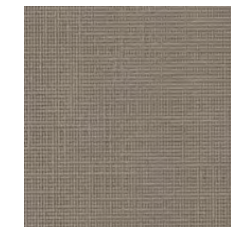
VINYL BASE



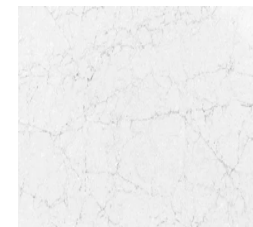
CARPET



VINYL FLOORING



MILLWORK



COUNTERTOP

Disclaimer: The above floor plan is not to scale.  
The available space shown is believed to be correct but is subject to change.

LAUREN COUP | 813-673-6006  
SVP, TAMPA MARKET LEADER

BRAD HEETER | 813-673-6003  
SR. LEASING REPRESENTATIVE

