

Workplace Co.

145 LEADENHALL STREET

LONDON, EC3V 4QT

THEWORKPLACECOMPANY.CO.UK | 020 7993 8075

145 LEADENHALL STREET

145 Leadenhall Street has recently undergone a comprehensive refurbishment of the common areas, WCs and the entrance hall. The available space is split across two floors and can be taken separately or together. The 1,730 sq ft office on the 4th floor comprises workstations, a kitchenette and a meeting room suite. The client facing suite has three meeting rooms, ranging from a 6-15 person boardroom. The 5th floor is fully fitted with workstations and a kitchenette. If both floors are taken, tenants will have full use of the meeting room suite.

Available via Assignment/Sublease until January 2028 or a new lease from the Landlord for a term to be agreed.

Floor	SQFT	Rent	Rates	Service	£ Monthly	£ Annually
4th Floor	1,730	£57	£23.12	£24.37	£15,076	£180,906
5th Floor	1,012	£68	£23.12	£24.70	£9,767	£117,210

Key Features

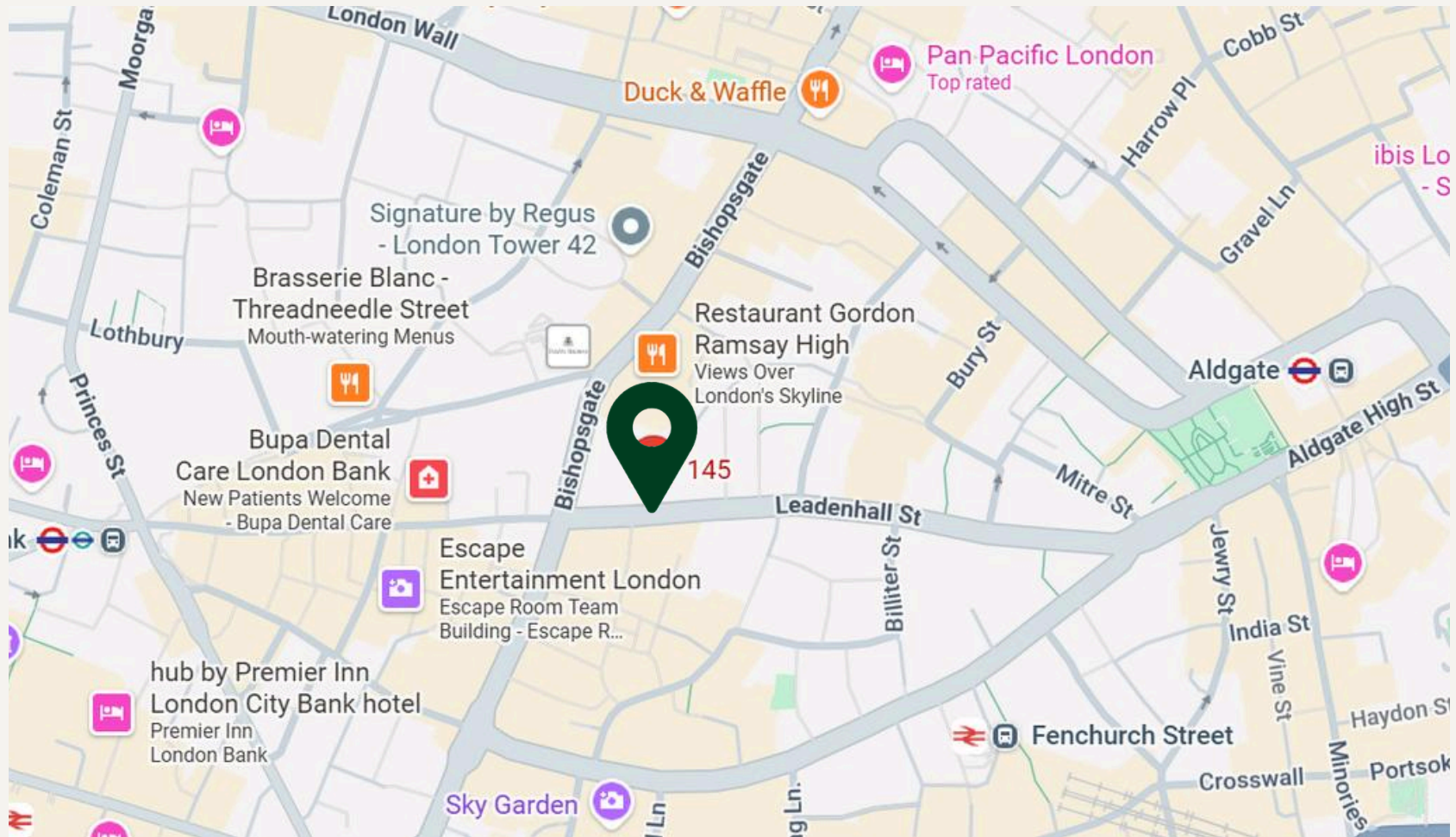
- Fully Fitted
- Air Conditioned
- Bike Storage & Shower
- Facilities
- Kitchenette
- Manned Reception
- Lift Access
- 3 Meeting Rooms

Nearby Stations

-  Bank (5 mins walk)
-  Fenchurch Street (6 mins walk)
-  Aldgate (7 mins walk)

145 LEADENHALL STREET

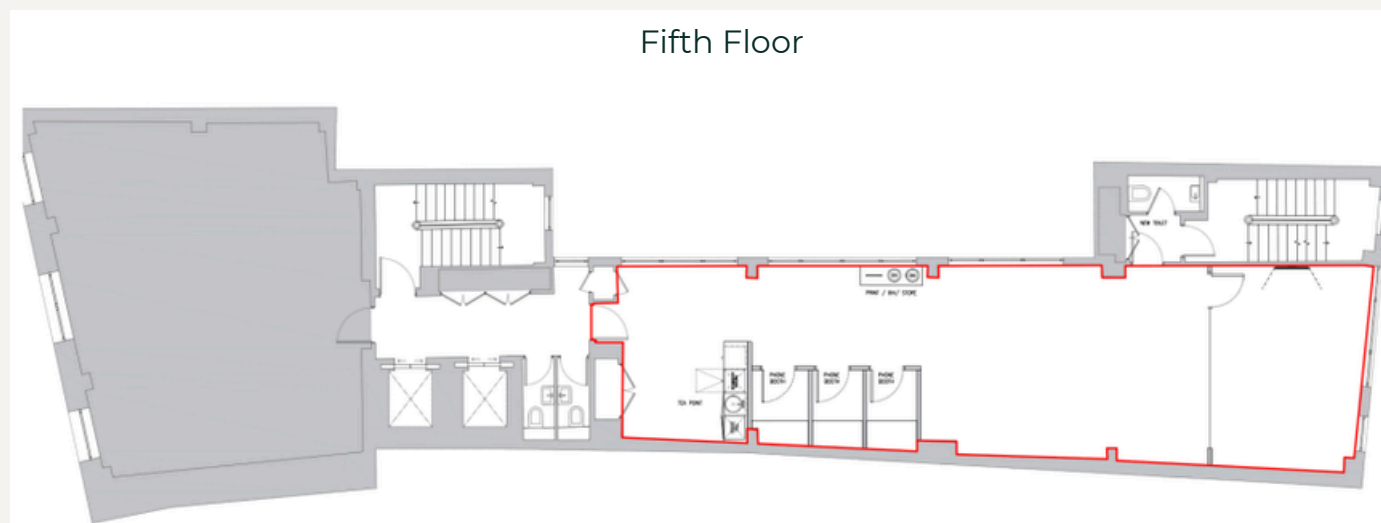
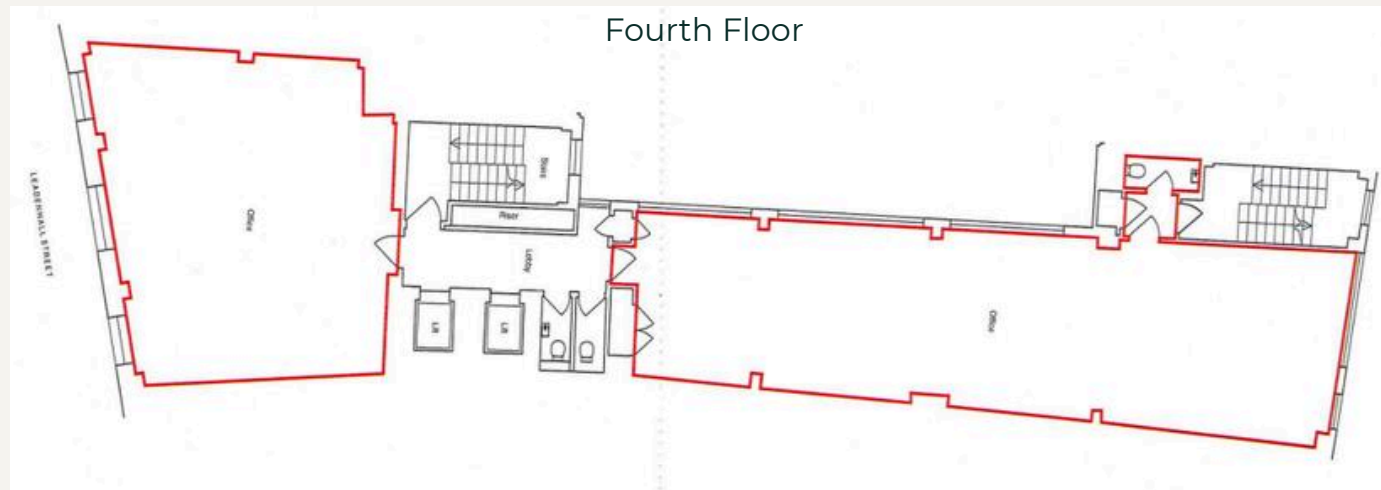
145 Leadenhall Street is a stone's throw away from the Lloyds Building and Leadenhall Market. It is within a 5 minute walk to Bank, Liverpool Street and Monument stations and a 10 minute walk to Fenchurch Street, Cannon Street and Moorgate stations.



GALLERY



Floor Plan



Workplace Co.

VIEWINGS

Oliver Bowder - Senior Surveyor

DD: 02079938075 / **M:** 07712209524

E: ob@theworkplacecompany.co.uk

Billy Mayes - Surveyor

DD: 02035976478 / **M:** 07733770559

E: bm@theworkplacecompany.co.uk

THEWORKPLACECOMPANY.CO.UK | 020 7993 8075

Misrepresentation Act 1967: These particulars are believed to be correct but their accuracy is not guaranteed and they do not form part of any contract. Unless otherwise stated, all prices and rents are quoted exclusive of VAT