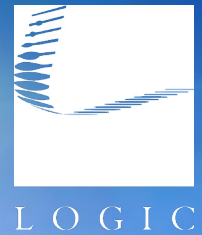


For Sale

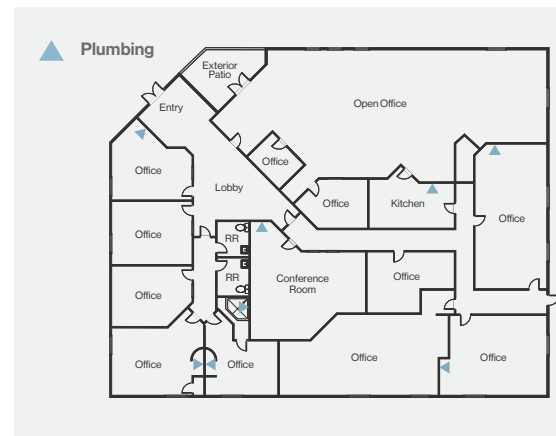
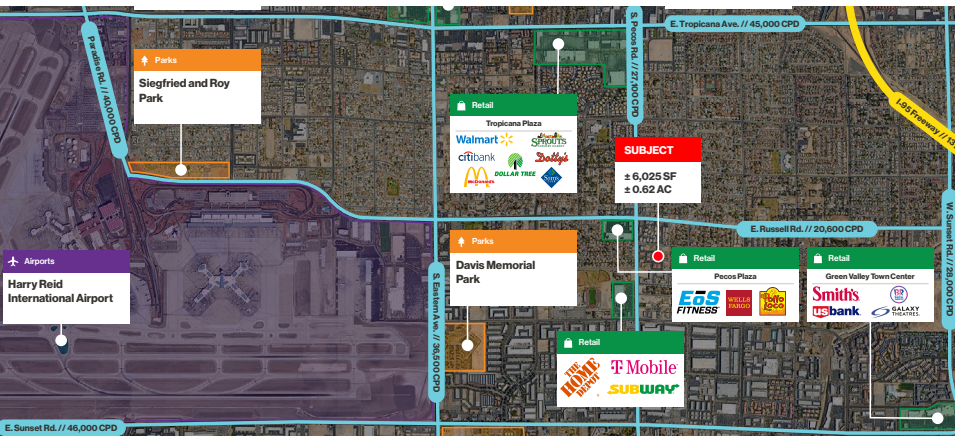
S. Pecos Rd. & E. Russell Rd.



5852 S. Pecos Rd., Las Vegas, NV 89120



Additional Listings



\$1,700,000
Offering Price



± 6,025 SF
Total Square Footage



\$282 PSF
Price Per Square Foot



± 0.62 AC
Total Acreage

- Owner-user medical or traditional office building
- Clean professional medical / traditional office park
- Built in 1998
- Clark County Zoning: C-P (Commercial Professional)



Scott Donaghe, SIOR
Senior Vice President
S.0172934
C. 310.880.8054
sdonaghe@logicCRE.com



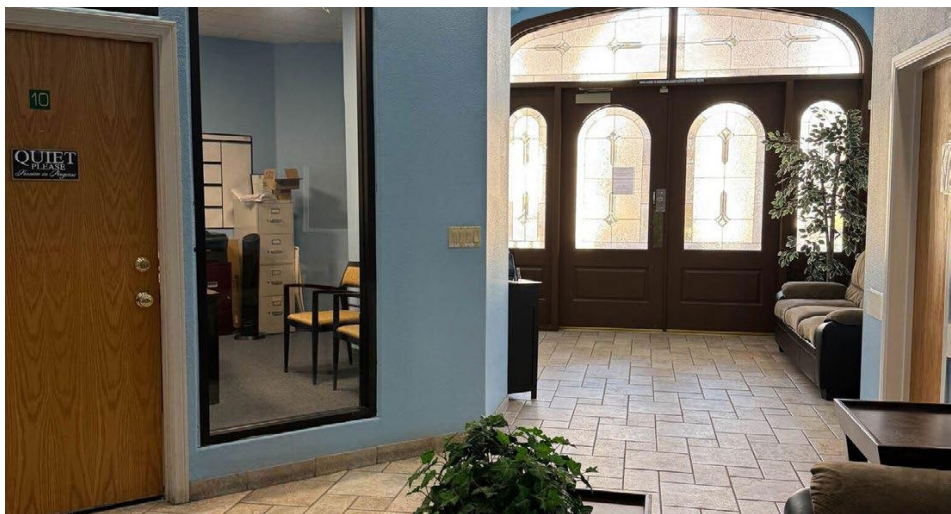
Adrian Pak
Vice President
S.0200217
C. 702.538.6802
apak@logicCRE.com

Click for a Virtual Tour

702.888.3500 | LogicCRE.com | 3900 S. Hualapai Way, Suite 200, Las Vegas, NV 89147

The information herein was obtained from sources deemed reliable; however LOGIC Commercial Real Estate makes no guarantees, warranties or representation as to the completeness or accuracy thereof.





702.888.3500 | LogicCRE.com | 3900 S. Hualapai Way, Suite 200, Las Vegas, NV 89147

The information herein was obtained from sources deemed reliable; however LOGIC Commercial Real Estate makes no guarantees, warranties or representation as to the completeness or accuracy thereof.

