

PACIFIC I-80 INDUSTRIAL PARK

INTERSTATE BUSINESS PARK | IMMEDIATE PROXIMITY TO I-80
TOOELE COUNTY'S NEWEST MASTER-PLANNED BUSINESS PARK
201 GSL DRIVE, TOOELE COUNTY, UTAH

432,469 SF | Proposed State-of-the-Art Industrial Build-to-Suit Opportunity
within the Utah Inland Port Authority Project Area



Pacific Industrial Building John Cannon Drive - SLC



JAMES MERRILL | 801.232.4119
james.merrill@crcnationwide.com

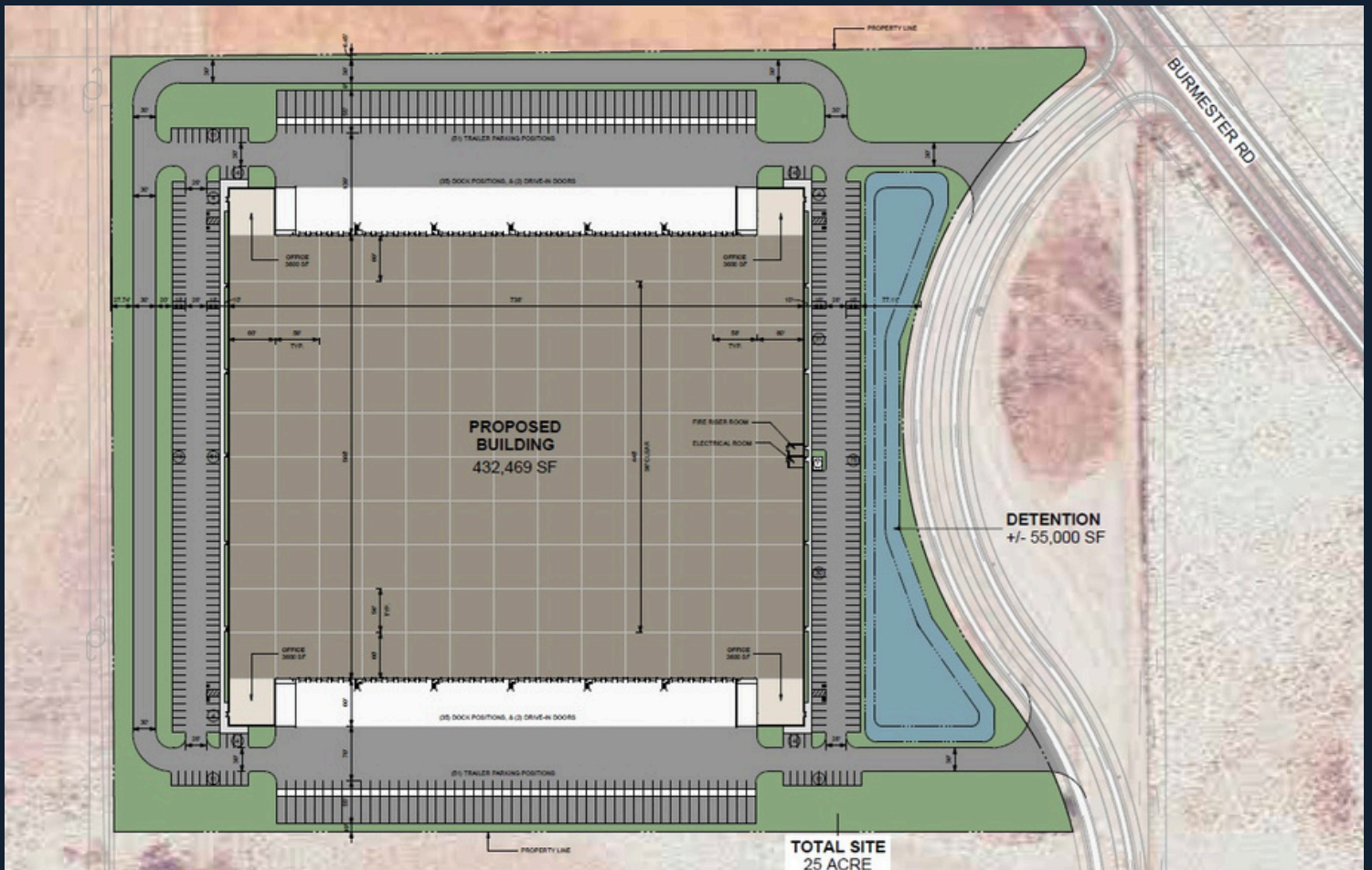
PACIFIC I-80 INDUSTRIAL PARK

INTERSTATE BUSINESS PARK
201 GSL DRIVE, TOOELE COUNTY, UTAH
WWW.INTERSTATEBUSINESSPARK.COM

BUILDING FEATURES

- 432,469 Square Feet
- 3,600 SF Office Space
- 25 Acres
- 36' Clear Height
- 4,000 Amps
- 196' Truck Court
- 101 Trailer Positions
- 56' Column Spacing
- 60' Speed Bay
- ESFR Fire Suppression

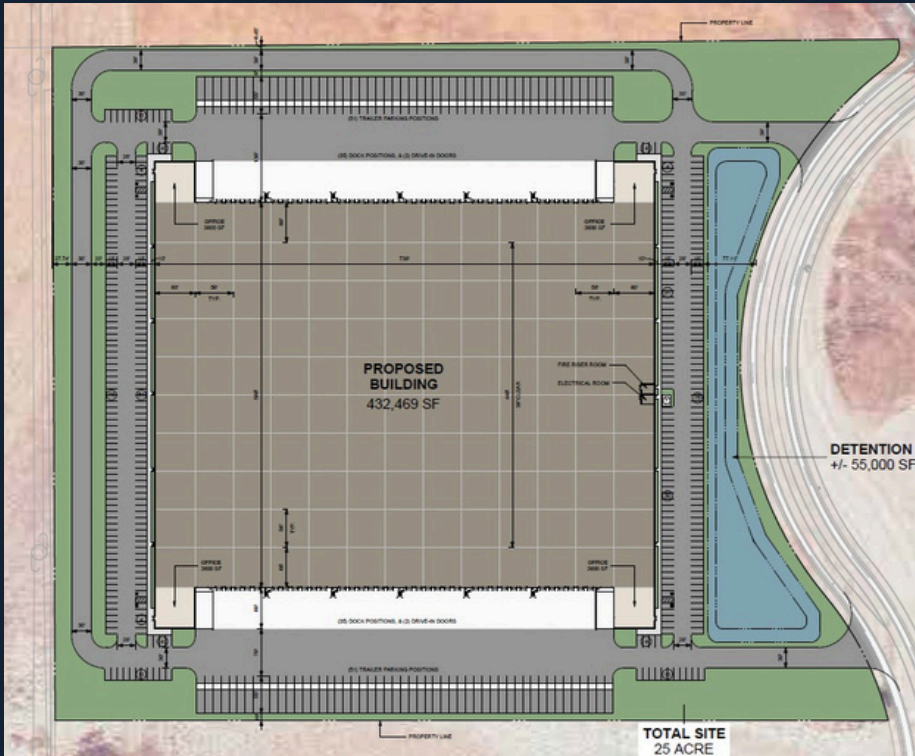
SITE PLAN



JAMES MERRILL | 801.232.4119
james.merrill@crcnationwide.com

PACIFIC I-80 INDUSTRIAL PARK

INTERSTATE BUSINESS PARK
201 GSL DRIVE, TOOELE COUNTY, UTAH
WWW.INTERSTATEBUSINESSPARK.COM



SITE PLAN

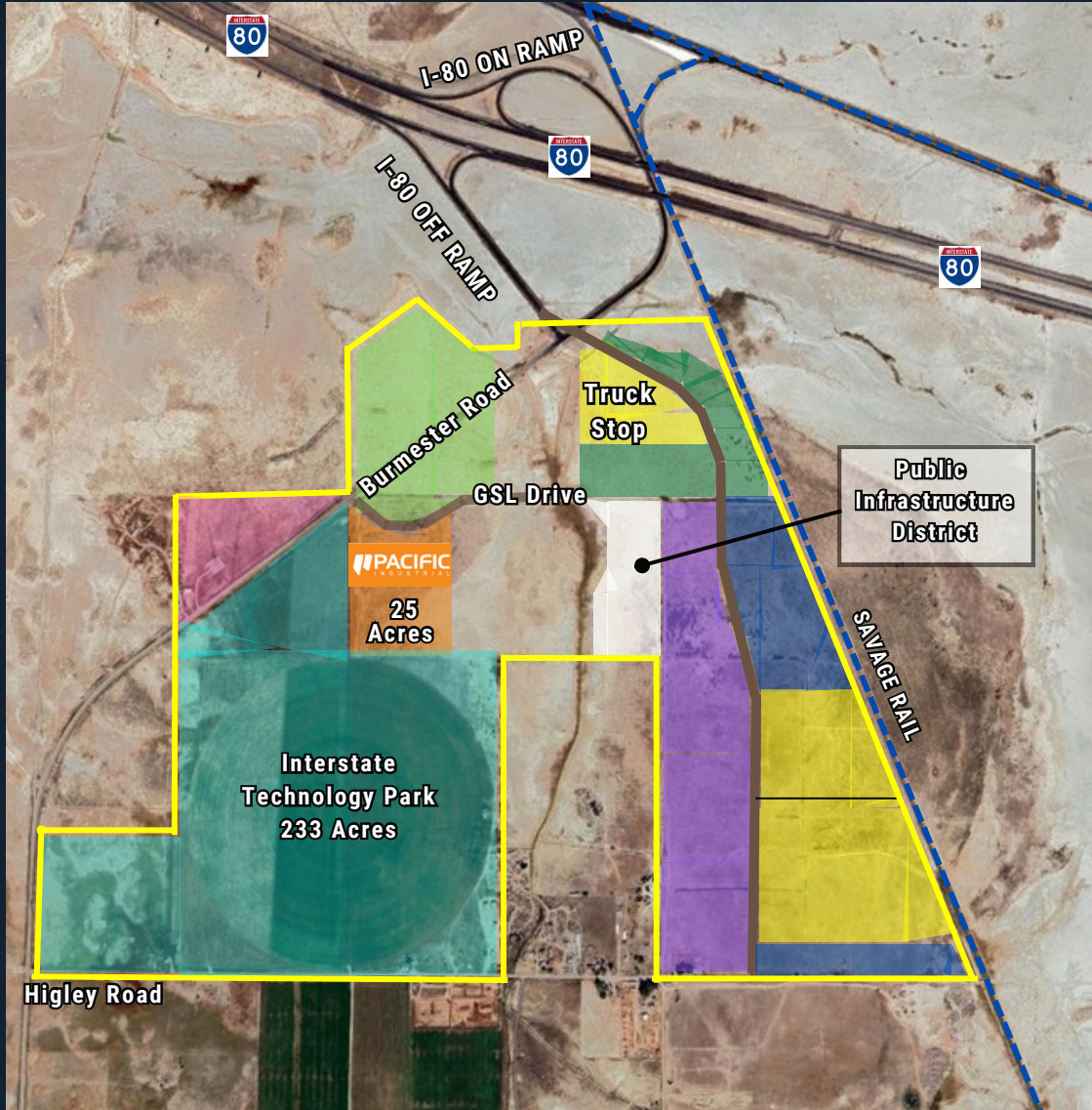
OFFICE SPACE FLOOR PLAN 3,600 SF



JAMES MERRILL | 801.232.4119
james.merrill@crcnationwide.com

PACIFIC I-80 INDUSTRIAL PARK

INTERSTATE BUSINESS PARK
201 GSL DRIVE, TOOELE COUNTY, UTAH
WWW.INTERSTATEBUSINESSPARK.COM



LOCATION FEATURES

- Immediate Access to I-80
- Within the Utah Inland Port Authority
- 15 Minutes to Salt Lake Industrial Corridors NWQ
- 20 Minutes to Union Pacific Hub
- 20 Minutes to Salt Lake International Airport
- 30 Minutes to Downtown Salt Lake City



JAMES MERRILL | 801.232.4119
james.merrill@crcnationwide.com

PACIFIC I-80 INDUSTRIAL PARK

INTERSTATE BUSINESS PARK
201 GSL DRIVE, TOOELE COUNTY, UTAH
WWW.INTERSTATEBUSINESSPARK.COM



DRIVE TIMES

 1-80 2 MINUTES	 GRANTSVILLE 5 MINUTES	 UNION PACIFIC HUB 20 MINUTES	 TOOELE 25 MINUTES	 SALT LAKE AIRPORT 20 MINUTES	 DOWNTOWN SALT LAKE 30 MINUTES
---	--	---	--	--	--



JAMES MERRILL | 801.232.4119
james.merrill@crcnationwide.com

PACIFIC I-80
INDUSTRIAL PARK

INTERSTATE BUSINESS PARK | IMMEDIATE PROXIMITY TO I-80
TOOELE COUNTY'S NEWEST MASTER-PLANNED BUSINESS PARK
201 GSL DRIVE, TOOELE COUNTY, UTAH
www.interstatebusinesspark.com

432,469 SF | Proposed State-of-the-Art Industrial Build-to-Suit Opportunity
within the Utah Inland Port Authority Project Area



Pacific Industrial Building John Cannon Drive - SLC



JAMES MERRILL | 801.232.4119
james.merrill@crcnationwide.com