



ETON BUSINESS PARK

21122 NORDHOFF ST, UNIT A/B
CHATSWORTH, CA

SPACE AVAILABLE | 3,036 SF

\$5,434 MG
PER MONTH (\$1.79 PSF)

6 MONTHS HALF RENT
(SUBJECT TO TENANT'S
CREDIT AND MINIMUM
3-YEAR LEASE TERM)

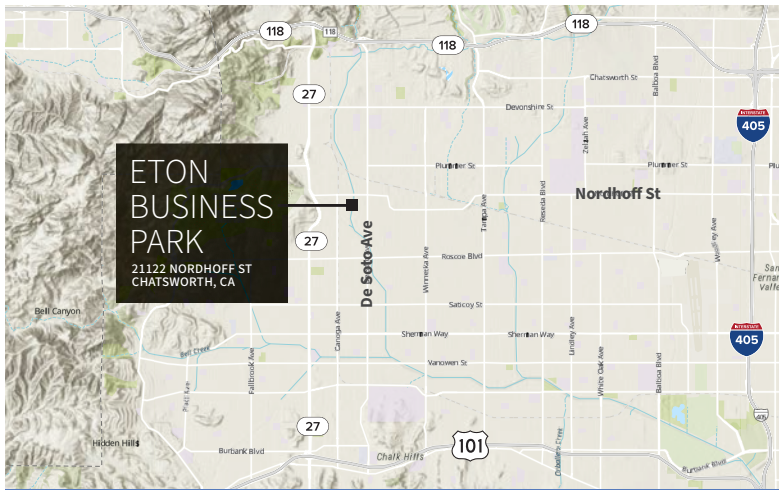


NEWMARK

Jeff Abraham, SIOR
Executive Managing Director
t 818 921 8528
jeff.abraham@nmrk.com
CA RE License #01830909

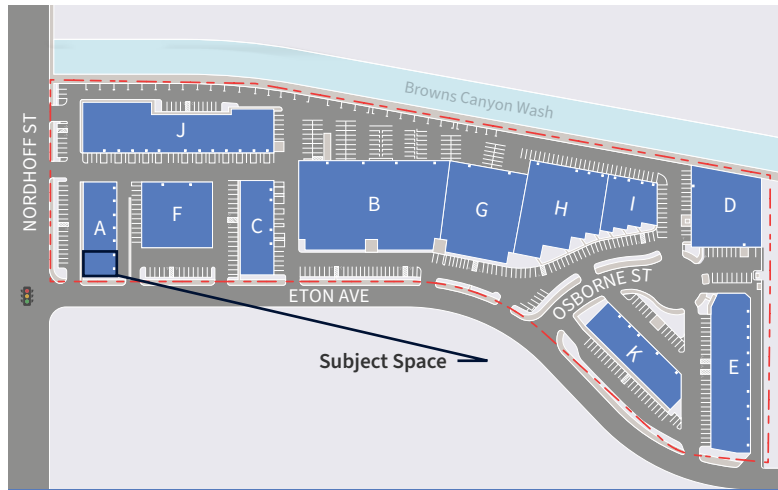
Javier Galvan
Associate Director
t 818 921 8532
javier.galvan@nmrk.com
CA RE License #02116539

Corporate License #01355491

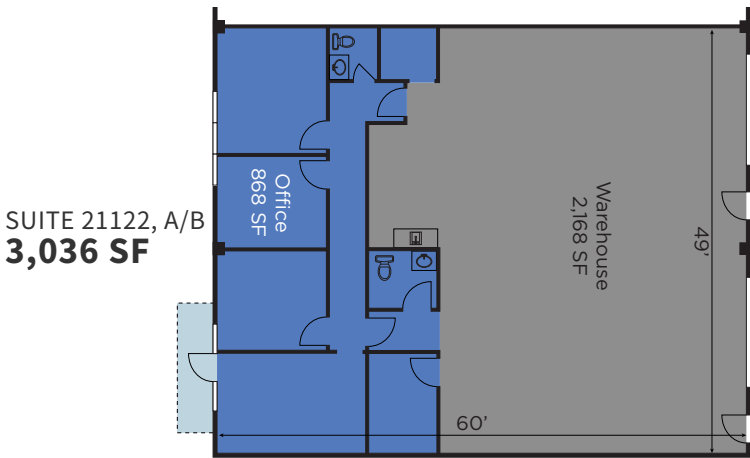


ETON BUSINESS PARK
21122 NORDHOFF ST
CHATSWORTH, CA

REGIONAL MAP



SITE PLAN



SUITE 21122, A/B
3,036 SF

FLOOR PLAN

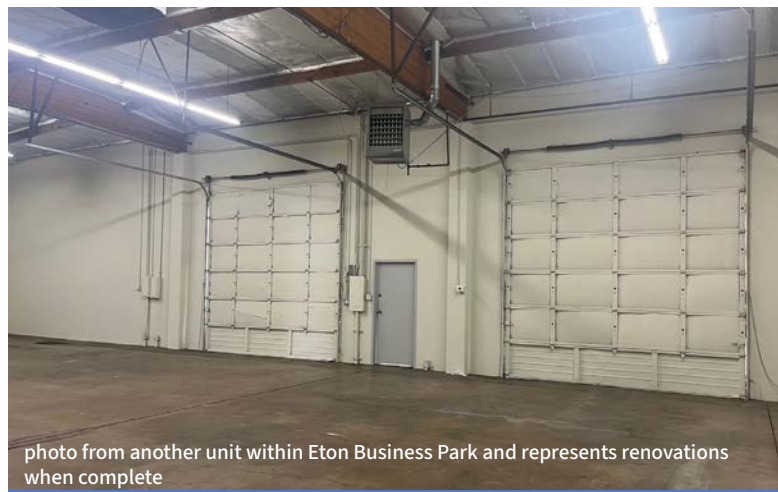


photo from another unit within Eton Business Park and represents renovations when complete

INTERIOR PHOTO

SUITE ATTRIBUTES



2 rear ground level loading doors



16-foot minimum warehouse clearance



Clear span warehouse



868 SF functional office space



200 Amps
120/208 Volts



3.5 miles from 118 Freeway and 5.2 miles from 101 Freeway



1.65:1,000 SF parking (5 spaces)



20 minutes from 405 Freeway, providing access to Greater Los Angeles



3 miles from Westfield Topanga



Jeff Abraham, SIOR
Executive Managing Director
t 818 921 8528
jeff.abraham@nmrk.com
CA RE License #01830909

Javier Galvan
Associate Director
t 818 921 8532
javier.galvan@nmrk.com
CA RE License #02116539

Corporate License #01355491