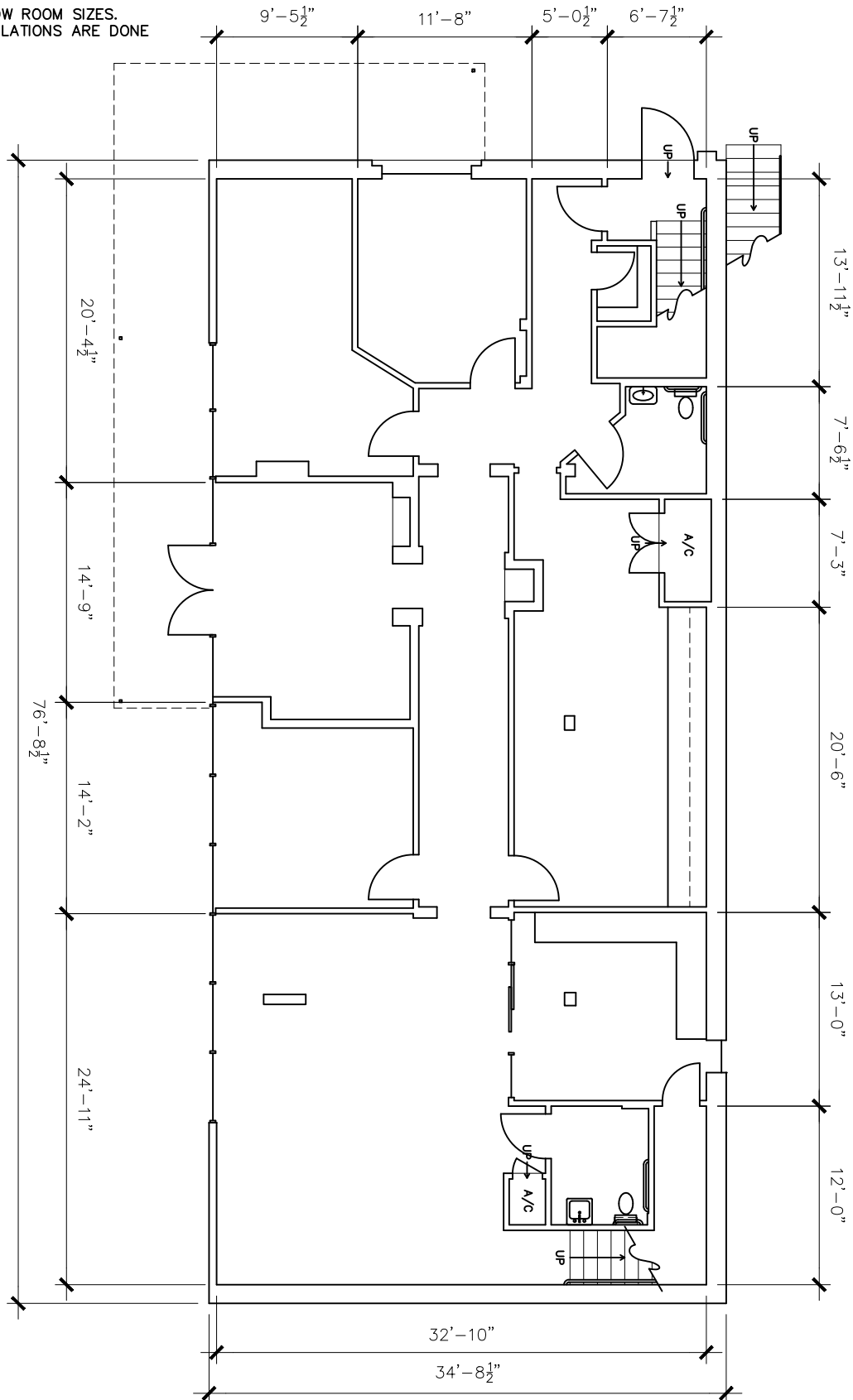
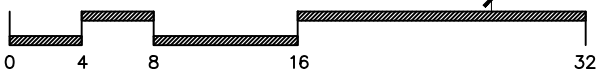


NOTE:

DIMENSIONS ARE TO SHOW ROOM SIZES.
SQUARE FOOTAGE CALCULATIONS ARE DONE
TO BOMA STANDARDS.



SCALE: 3/32" = 1'-0"



Drawing for:
 Cushman & Wakefield
 405 Colorado St.
 Ste. 2300
 Austin, TX 78701

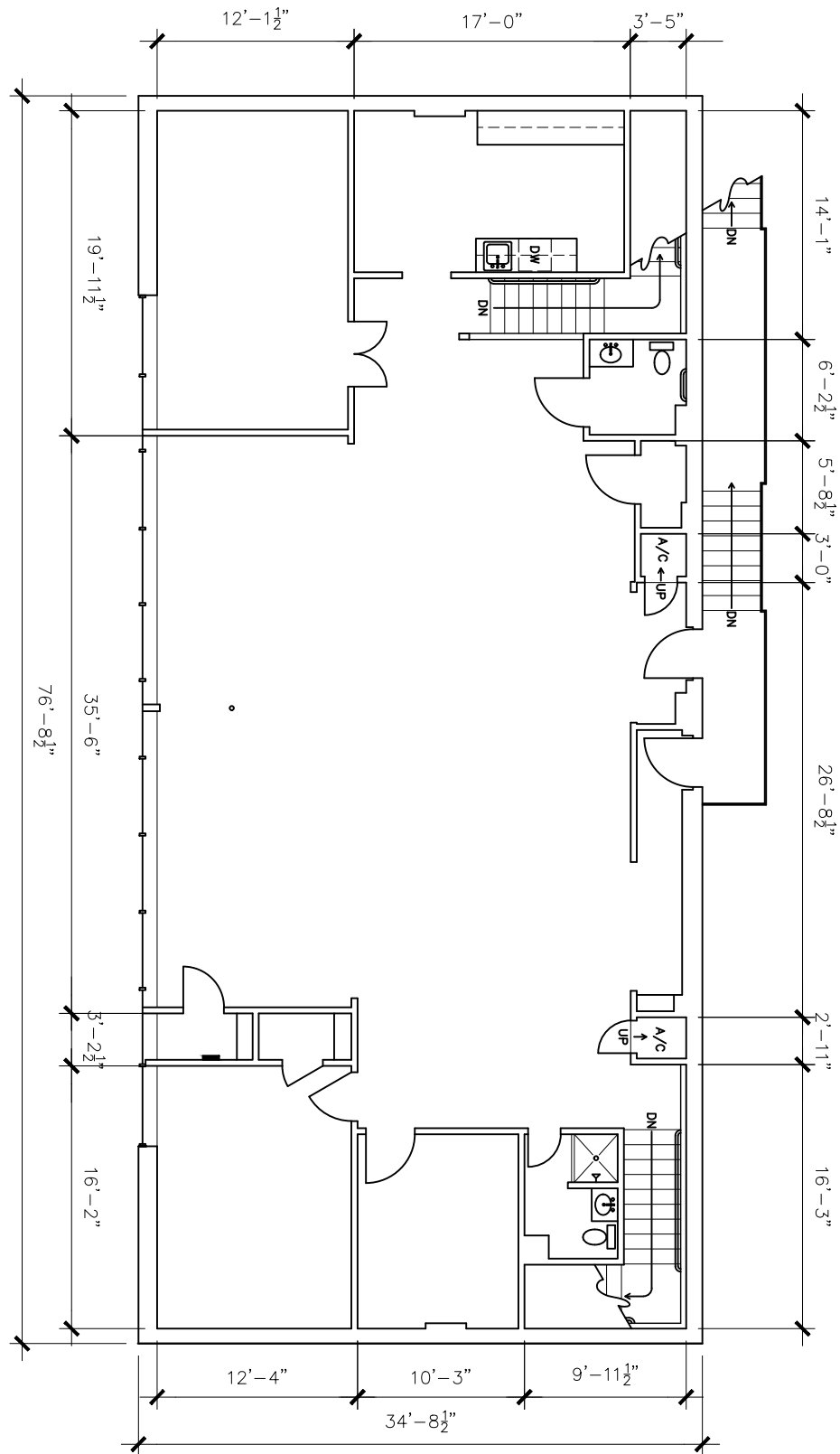
FIRST FLOOR
 1101 W. ANDERSON LN.
 AUSTIN, TEXAS
 EXTERIOR GROSS AREA: 5,322 S.F.

THE MEASUREMENTS, FLOOR PLANS,
 AND CALCULATIONS ARE ACCURATE
 USING BOMA MEASUREMENT
 STANDARDS.
 ANSI/BOMA Z65.3 - 2018
 GROSS - LEASING METHOD
 Project No.: 24113.01
 Date: December 20, 2024
 ©2024

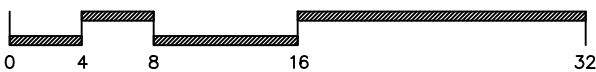
AUSTIN ★ TEXAS
 DIMENSIONSFLOORPLANS.COM
 PHONE: (512) 342-0114

NOTE:

DIMENSIONS ARE TO SHOW ROOM SIZES.
SQUARE FOOTAGE CALCULATIONS ARE DONE
TO BOMA STANDARDS.



SCALE: 3/32" = 1'-0"



Drawing for:
 Cushman & Wakefield
 405 Colorado St.
 Ste. 2300
 Austin, TX 78701

SECOND FLOOR
 1101 W. ANDERSON LN.
 AUSTIN, TEXAS
 EXTERIOR GROSS AREA: 5,322 S.F.

THE MEASUREMENTS, FLOOR PLANS,
 AND CALCULATIONS ARE ACCURATE
 USING BOMA MEASUREMENT
 STANDARDS.
 ANSI/BOMA Z65.3 - 2018
 GROSS 1 - LEASING METHOD
 Project No.: 24113.01
 Date: December 20, 2024
 ©2024

DIMENSIONS
 FLOORPLANS

AUSTIN ★ TEXAS
 DIMENSIONSFLOORPLANS.COM
 PHONE: (512) 342-0114