



Howard O'Hare Business Center

200 HOWARD AVENUE - SUITE 238
DES PLAINES, IL 60018

SPACE AVAILABLE

4,353 SF

WAREHOUSE

700 SF

NET LEASE RATE

Subject to Offer

OPEX

\$7.56 Total, 2025 Budget

PROPERTY HIGHLIGHTS

- Industrial / Flex Property
- Multi-tenant, single story complex
- Great window lines
- Abundant surface parking
- Large training room
- 13 mins. to Rosemont Entertainment District
- 8 mins. to O'Hare terminal
- 14 mins. to South Cargo Entrance
- 4 mins. to I-90

For more information, please contact:

Thomas Gath

Managing Director

t +1(773)957-1415

thomas.gath@nmrk.com

8750 W Bryn Mawr Ave Suite 350

Chicago, IL 60631



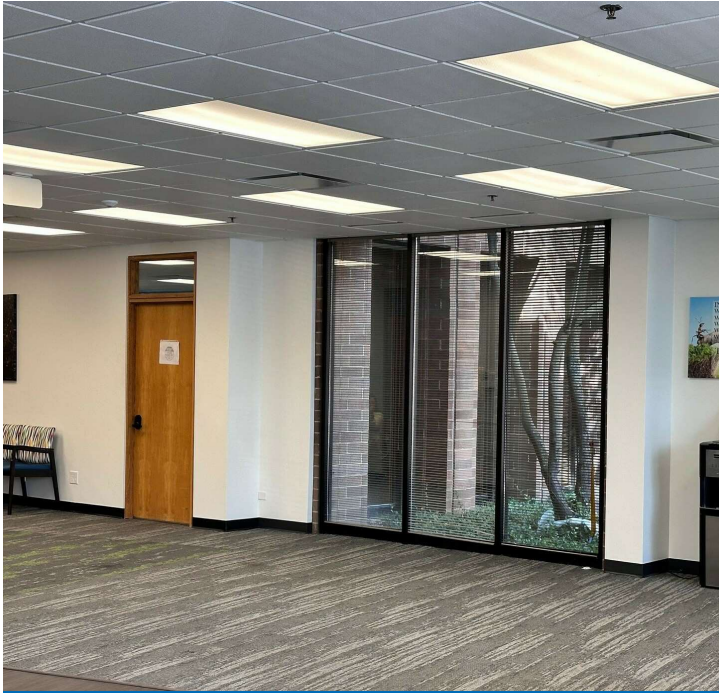
nmrk.com

NEWMARK

Licensed in Illinois as Newmark Midwest Region, LLC

The information contained herein has been obtained from sources deemed reliable but has not been verified and no guarantee, warranty or representation, either express or implied, is made with respect to such information. Terms of sale or lease and availability are subject to change or withdrawal without notice.

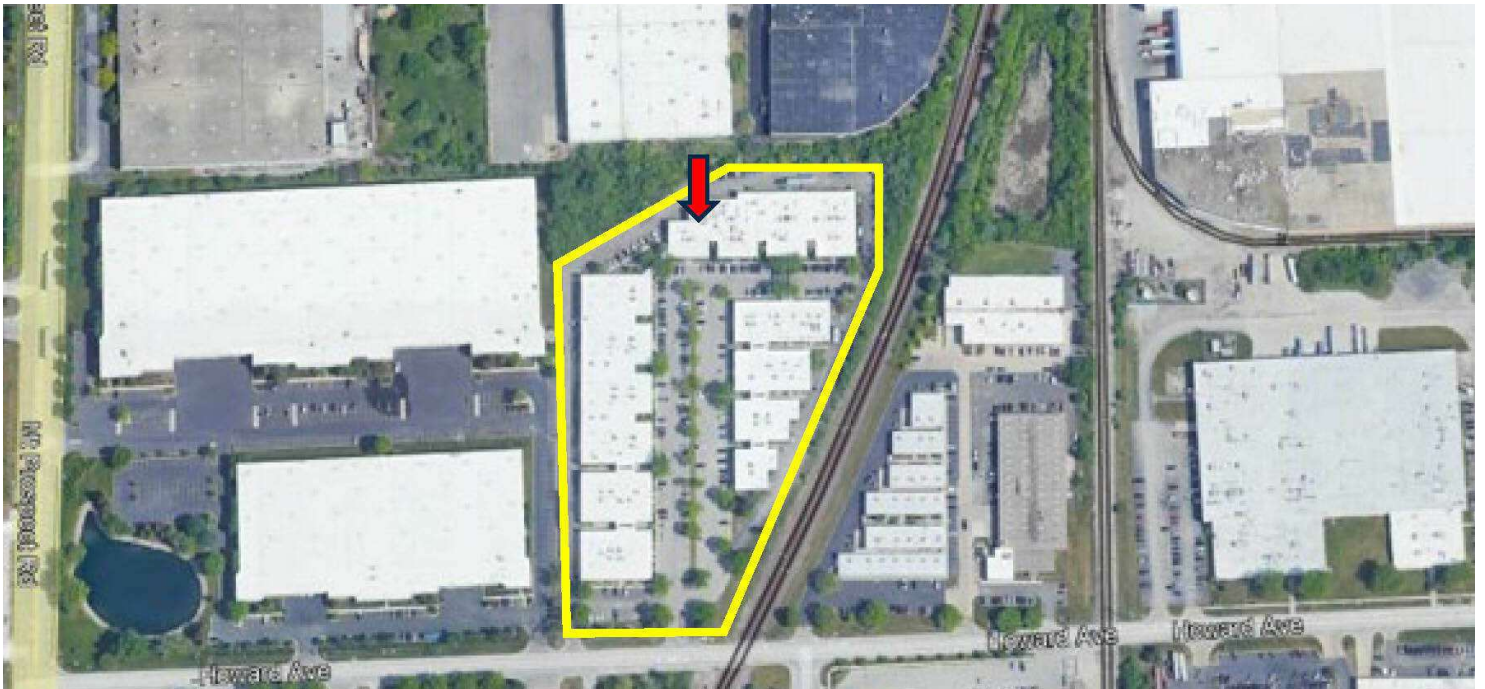
HOWARD O'HARE BUSINESS CENTER / 200 HOWARD AVENUE - SUITE 238, DES PLAINES, IL 60018



Office

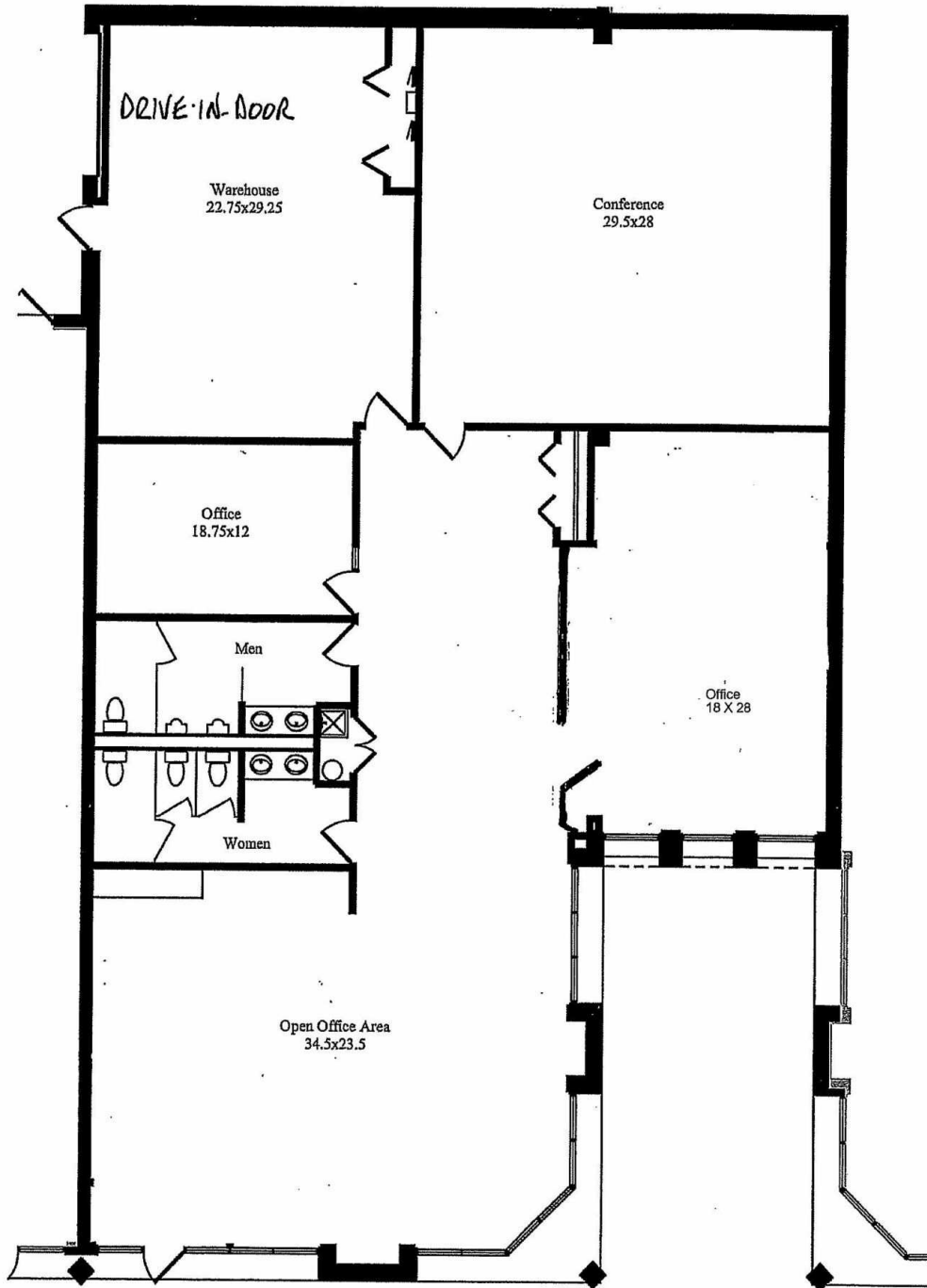


Office



Site Map

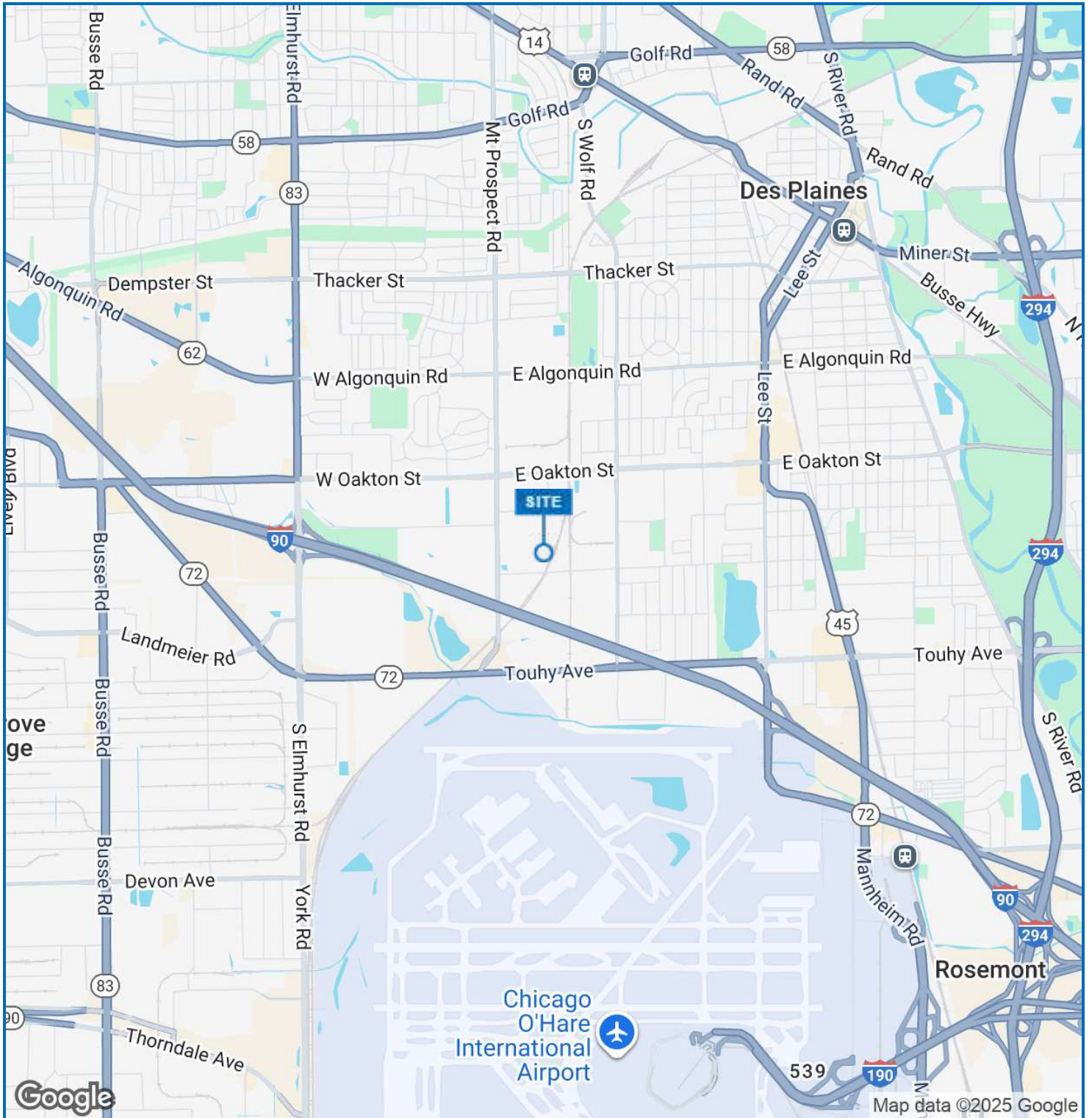
Thomas Gath
Managing Director
t +1(773)957-1415
thomas.gath@nmrk.com



Floor Plan

Thomas Gath
Managing Director
t +1(773)957-1415
thomas.gath@nmrk.com

HOWARD O'HARE BUSINESS CENTER / 200 HOWARD AVENUE - SUITE 238, DES PLAINES, IL 60018



Thomas Gath
Managing Director
t +1(773)957-1415
thomas.gath@nmrk.com

NEWMARK