



## OAKWOOD SQUARE

2714 Easton St NE  
Canton, Ohio 44721

Lease Rate	\$7.00-18.00/SF (NNN)
CAM	\$3.68/SF
Lot Size	13.44 Acres
Zoning	PLA-B2
Year built	1982-1983
Year Renovated	2017
Parking	1,255 spaces
Traffic Counts	18,147 AADT 8,805 - Easton 9,342 - Middlebranch

### Jared Sanford

P 330 354 3466  
jared@naispring.com

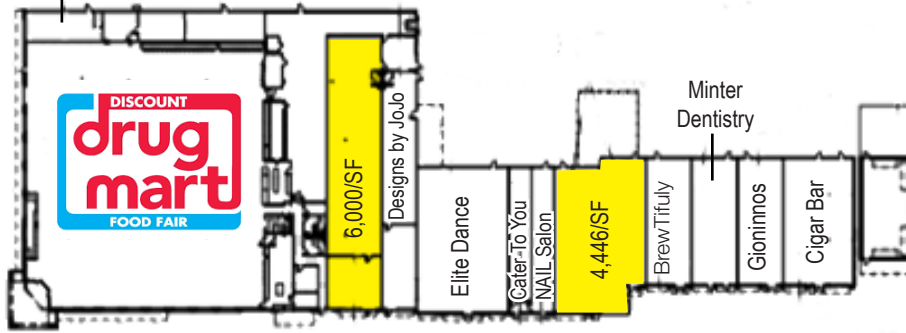
### Property Highlights

- 2710-B - 6,000/SF open retail/storage area, with 17'4" ceiling height to trusses and shared dock. \$7.00/SF/NNN
- 2680 - 2,900/SF retail space. \$16.00/SF/NNN
- 2700 - 4,446/SF Former restaurant space with patio seating, 24' hood. \$18.00/SF/NNN.
- Highly visible retail development in the heart of Plain Township.
- Other tenants include: Discount Drug Mart, Anytime Fitness, Mercy Medical, The Bistro, John's Bar, Samantha's, Tlaquepaque, Gionino's Pizza, and The Basement.
- Plain Township Amphitheater located at Oakwood Square DORA District.
- Tenant exclusions apply.

### Sean Sanford

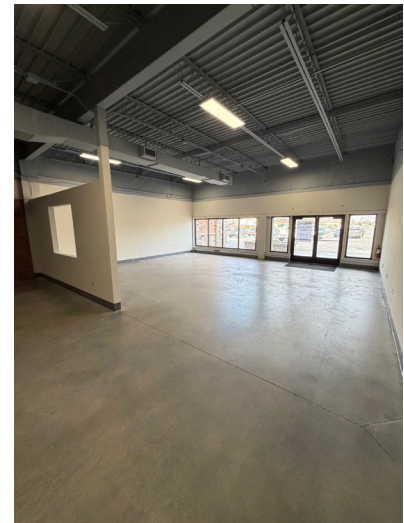
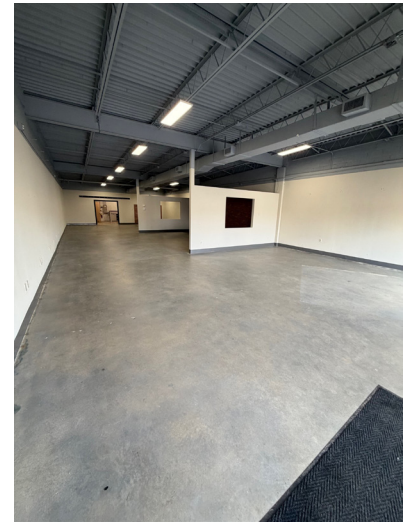
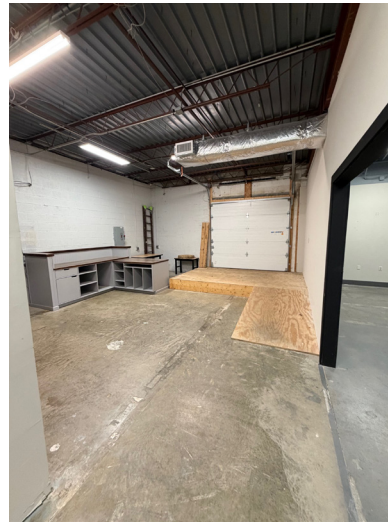
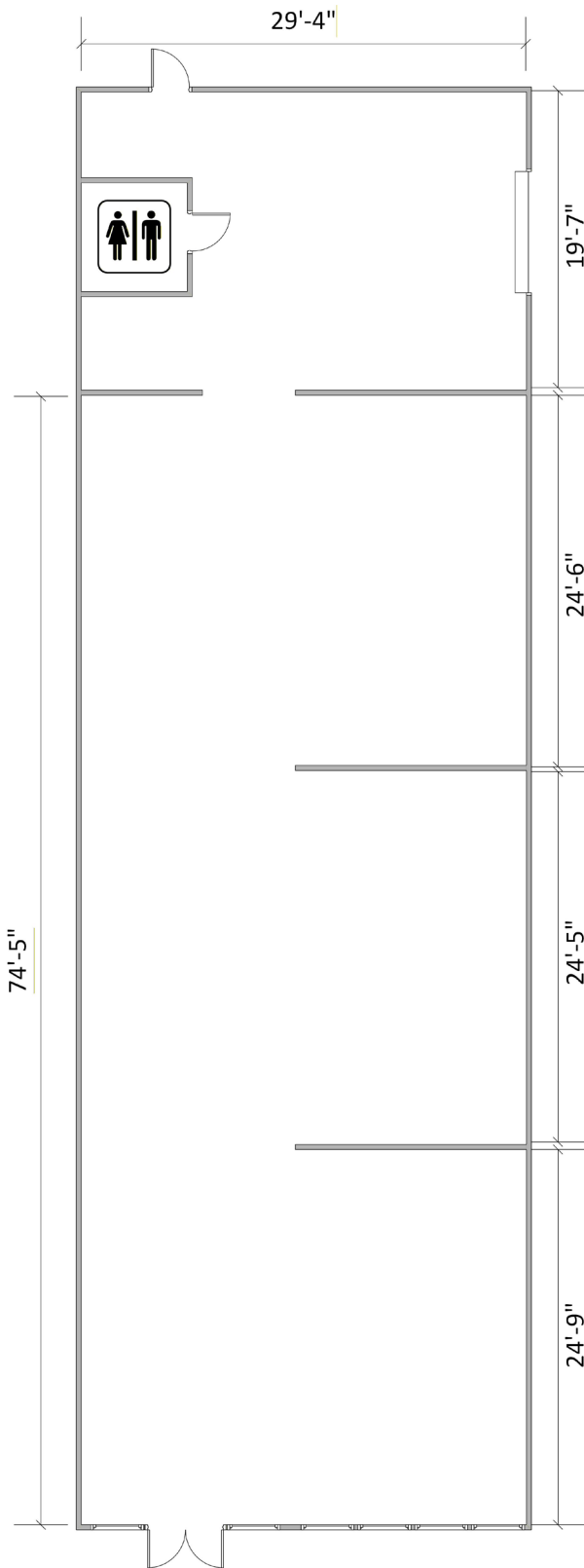
P 330 284 0331  
sean@naispring.com

TugBoats Sports Bar

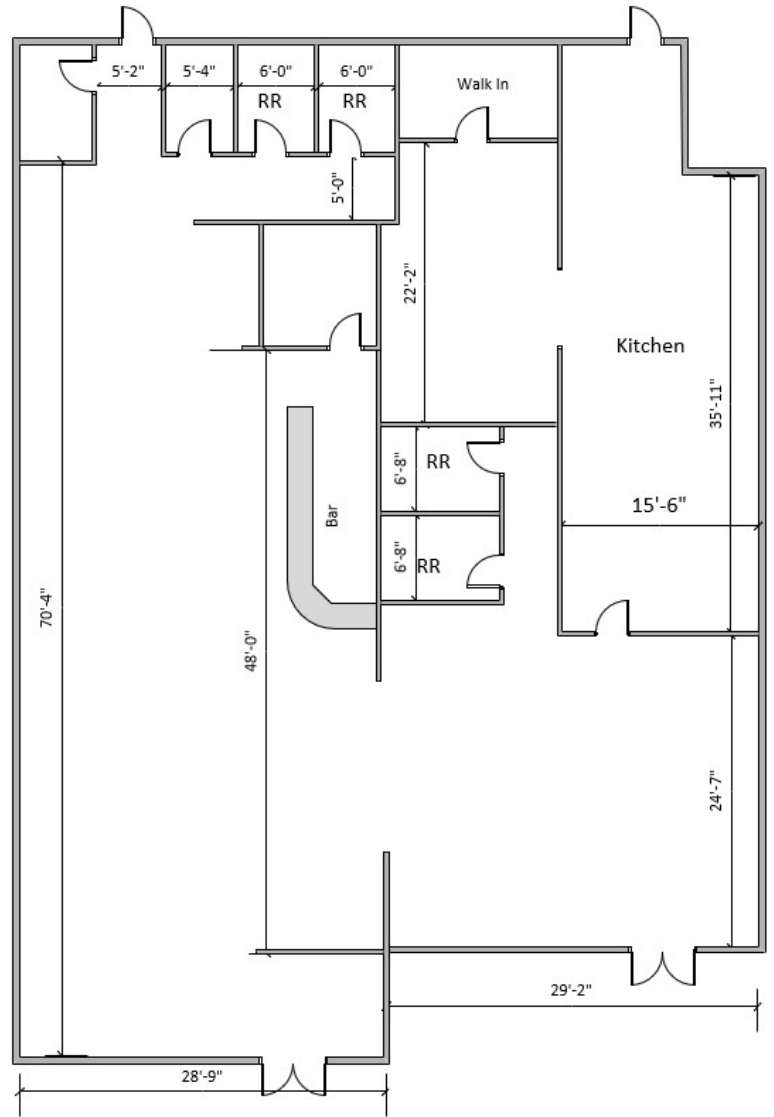


TENANTS	SQ. FT.
Discount Drug Mart	28,500
Tug Boats Sports Bar	1,780
<b>AVAILABLE</b>	<b>6,000</b>
Designs By JoJo's Creations	3,000
Elite Dance	4,800
Cater to You	1,120
Nail Salon	1,200
<b>AVAILABLE</b>	<b>4,446</b>
BrewTifuly	2,113
Minter Dentistry	2,100
Gionino's Pizza	2,100
Cigar Room	3,172
Tlaquepaque Restaurant	5,372
<b>AVAILABLE</b>	<b>2,900</b>
Anytime Fitness	7,507
Little Angels	2,616
The Basement	5,685
The Bistro	5,250
John's Bar & Grill	4,381
Jason's Place	7,200
Back 9 Golf	2,400
Elevate Chiropractor	2,400
Samantha's	5,066
Mercy Medical	6,500

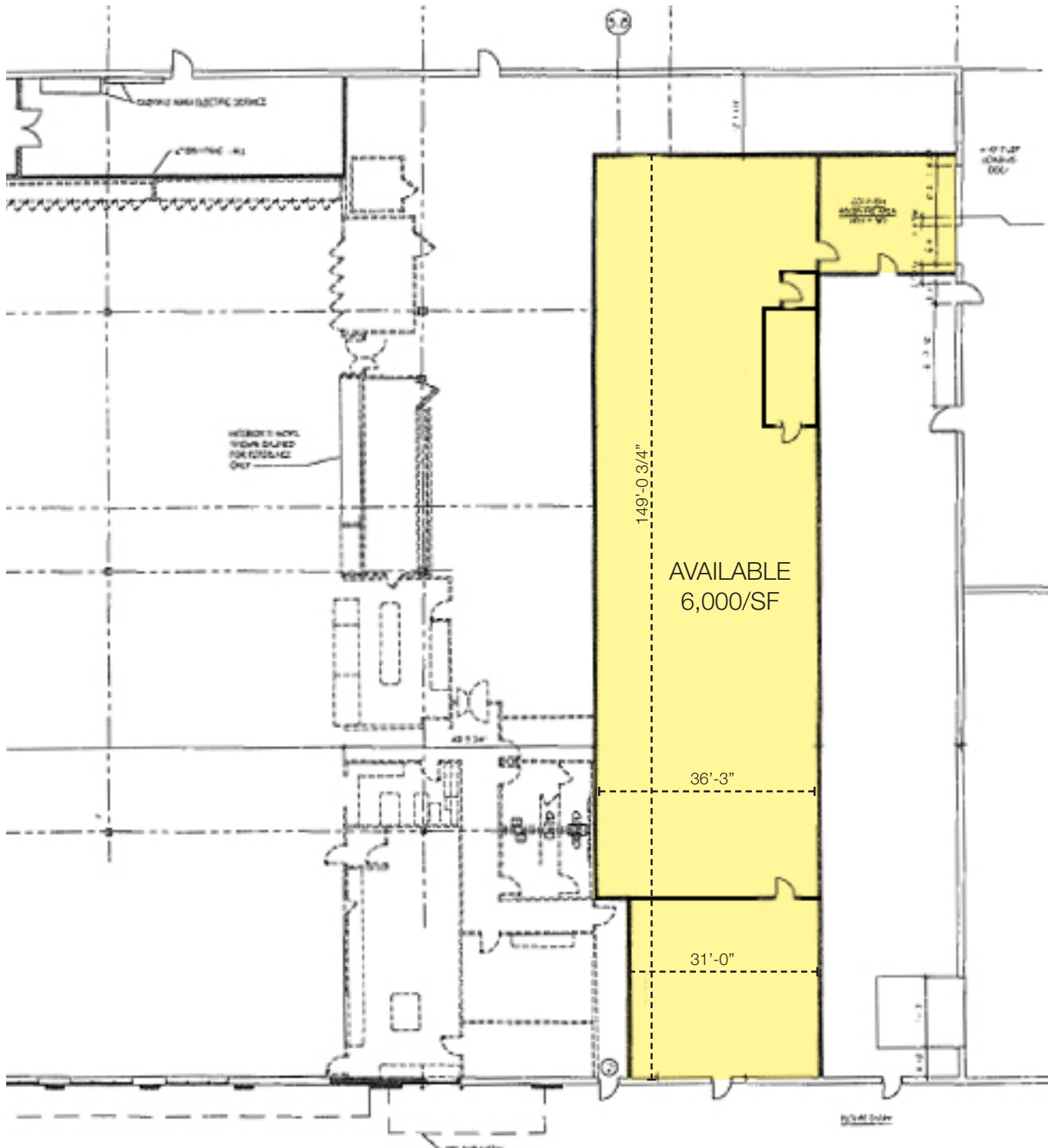




\*DIMENSIONS ARE APPROXIMATE. THIS INFORMATION IS FROM RELIABLE SOURCES BUT IS NOT GUARANTEED AND IS SUBJECT TO CHANGE



\*DIMENSIONS ARE APPROXIMATE. THIS INFORMATION IS FROM RELIABLE SOURCES BUT IS NOT GUARANTEED AND IS SUBJECT TO CHANGE



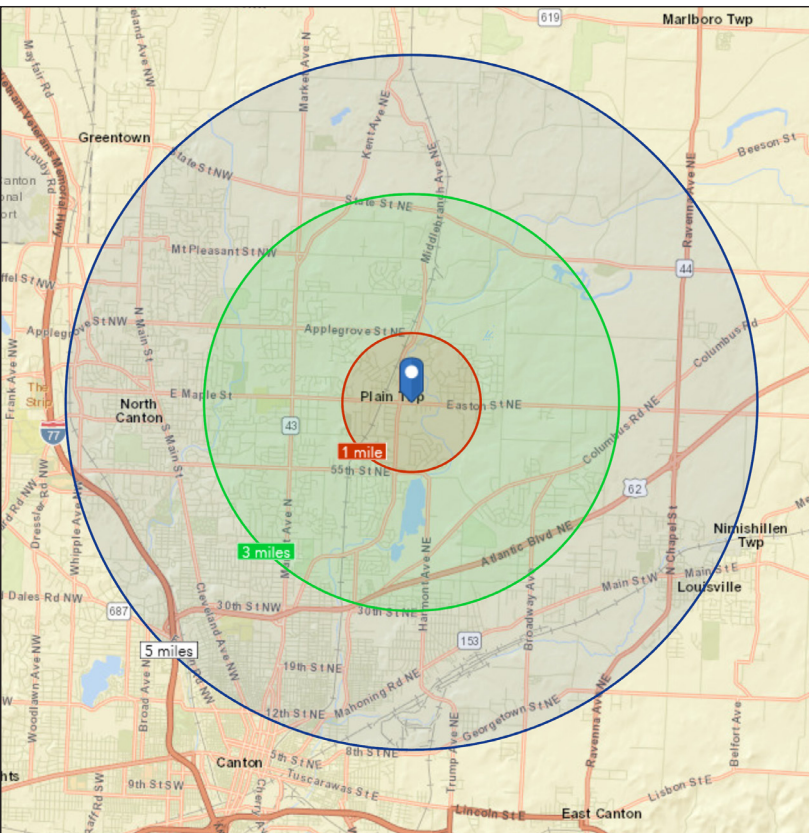
\*DIMENSIONS ARE APPROXIMATE. THIS INFORMATION IS FROM RELIABLE SOURCES BUT IS NOT GUARANTEED AND IS SUBJECT TO CHANGE

NO WARRANTY OR REPRESENTATION, EXPRESS OR IMPLIED, IS MADE AS TO THE ACCURACY OF THE INFORMATION CONTAINED HEREIN, AND THE SAME IS SUBMITTED SUBJECT TO ERRORS, OMISSIONS, & CHANGES. NO WARRANTIES ARE BEING MADE REGARDING MINERAL INTERESTS OR SURFACE RIGHTS, AND ANY SUCH INFORMATION THERETO SHOULD BE VERIFIED WITH A QUALIFIED ATTORNEY.

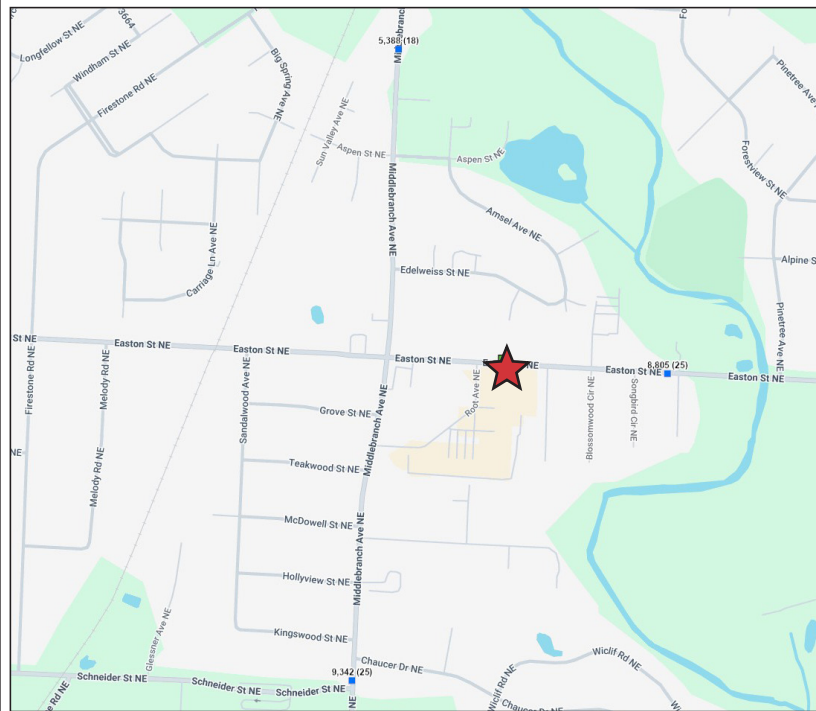


### Demographics 2025

	1 Mile	3 Miles	5 Miles
Population	5,029	34,575	108,440
Households	2,038	13,741	46,217
Families	1,454	9,389	27,666
Average Household Size	2.47	2.41	2.28
Owner Occupied Housing Units	1,780	11,217	30,797
Renter Occupied Housing Units	258	2,524	15,420
Median Age	45.2	44.4	42.2
Median Household Income	\$86,013	\$78,101	\$64,566
Average Household Income	\$106,413	\$97,008	\$84,852



### Traffic Count Map



NO WARRANTY OR REPRESENTATION, EXPRESS OR IMPLIED, IS MADE AS TO THE ACCURACY OF THE INFORMATION CONTAINED HEREIN, AND THE SAME IS SUBMITTED SUBJECT TO ERRORS, OMISSIONS, & CHANGES. NO WARRANTIES ARE BEING MADE REGARDING MINERAL INTERESTS OR SURFACE RIGHTS, AND ANY SUCH INFORMATION THERETO SHOULD BE VERIFIED WITH A QUALIFIED ATTORNEY.