

NEW LEASES SIGNED!

NOW OPEN!



peak Credit Union

the do WAY WEST

SISTERS COFFEE CO

drybar



# JACKSTRAW

## Ground Floor Commercial Leasing Opportunities

RETAIL & RESTAURANT SPACE

310 SW INDUSTRIAL WAY, BEND, OR 97702

COMPASS COMMERCIAL

REAL ESTATE SERVICES



ABOUT

JACKSTRAW



## Property Information

**4.7 ACRES | 480,000 SF | 7 STORIES**

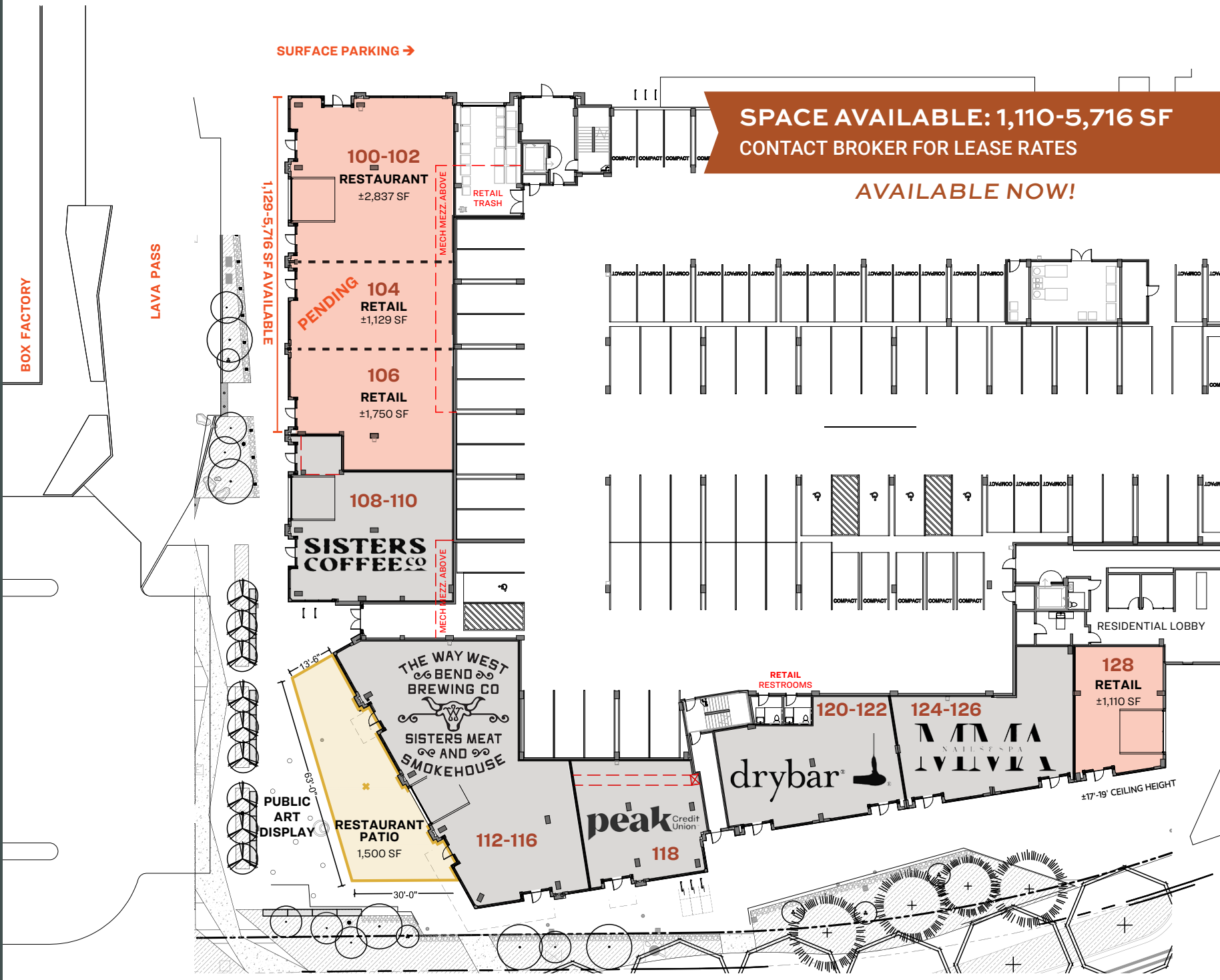
- 313 residential units
- Mix of rental townhomes and apartments
- 10,207 SF of ground floor commercial with opportunities for restaurant or retail spaces
- Environmentally friendly building
- Lava Pass - a community focused living-street for retailers, pedestrians, cyclists and low-speed motor vehicles between Box Factory and Jackstraw
- Residential amenities include pet facilities and rooftop terraces
- Ample parking to be shared with retail and residential

**COMMERCIAL SPACE: 1,110-5,716 SF**  
CONTACT BROKER FOR LEASE RATES

**AVAILABLE NOW!**

# 2 FLOOR PLAN

# JACKSTRAW



**SPACE AVAILABLE: 1,110-5,716 SF**  
**CONTACT BROKER FOR LEASE RATES**

**AVAILABLE NOW!**

SW INDUSTRIAL WAY

# 3 LOCATION

Jackstraw is centrally located to access a full range of outdoor recreation, including parks, trails, the Deschutes river, lakes, and more.

- ➔ Surrounded by beautifully converted mill buildings, which now house retail and restaurants with a unique historical charm
- ➔ Ideally situated between The Old Mill District to the south and downtown Bend to the north, making it a bridge between two quintessential shopping districts
- ➔ Adjacent to the Box Factory for diverse dining, shopping, and entertainment options
- ➔ Close to the Deschutes River and outdoor recreation areas for active lifestyles
- ➔ Across the street from Market of Choice, an Oregon grocer offering the finest and freshest organic, natural, and conventional products
- ➔ Conveniently located near major transportation routes, making commuting a breeze, whether by car, bike, or public transit
- ➔ Just a few blocks from Hwy 97/Bend Parkway, the main thoroughfare to and from Bend

**95**  
BIKE SCORE  
Bikers Paradise

**76**  
WALK SCORE  
Very Walkable



# JACKSTRAW



Rendering of Lava Pass for illustrative purposes only. Final design may vary.

**COMPASS**  
COMMERCIAL

**REAL ESTATE  
SERVICES**

**FOR COMMERCIAL LEASING INFORMATION, CONTACT:**

**Russell Huntamer, CCIM**

[rhuntamer@compasscommercial.com](mailto:rhuntamer@compasscommercial.com)

541.419.2634

**Jay Lyons, SIOR, CCIM**

[jlyons@compasscommercial.com](mailto:jlyons@compasscommercial.com)

541.410.6519

**Eli Harrison, Broker**

[eharrison@compasscommercial.com](mailto:eharrison@compasscommercial.com)

541.977.2890

Brokers are licensed in the state of Oregon. This information has been furnished from sources we deem reliable, but for which we assume no liability. This is an exclusive listing. The information contained herein is given in confidence with the understanding that all negotiations pertaining to this property be handled through Compass Commercial Real Estate Services. All measurements are approximate.