

REDEVELOPMENT OPPORTUNITY FOR SALE \$749,000



350 S. Ronald Reagan Blvd
Longwood, FL 32750

All information contained herein is from sources deemed reliable;
however, no presentation or warranty is made to the accuracy thereof.

Michael R. Curtin, Broker – Manager
Hive Commercial Realty
Office: 407-476-3923
Cell: 203-240-4121
Michael.Curtin@HiveRealtors.com



REDEVELOPMENT OPPORTUNITY FOR SALE

350 S. Ronald Reagan Blvd
Longwood, FL 32750



DESCRIPTION:

- **1.29 acre** with 246' frontage
- High traffic corridor on Ronald Reagan near Lyman High School and close to Major Industrial Park
- Redevelopment for new Light Industrial / Flex Warehouse space, Retail Strip or Professional Offices
- New 350 Unit Multifamily Complex currently under development within 1 mile

PRICE: \$749,000

DEMOGRAPHICS	1 mile	3 miles	5 miles
Total Population	7,082	78,694	206,235
Total Households	2,713	31,576	83,220
Average HH Income	\$73,101	\$72,824	\$86,000

TRAFFIC COUNTS	VPD
South Ronald Reagan	23,095
SR-434	40,000
Dog Track Road	18,900

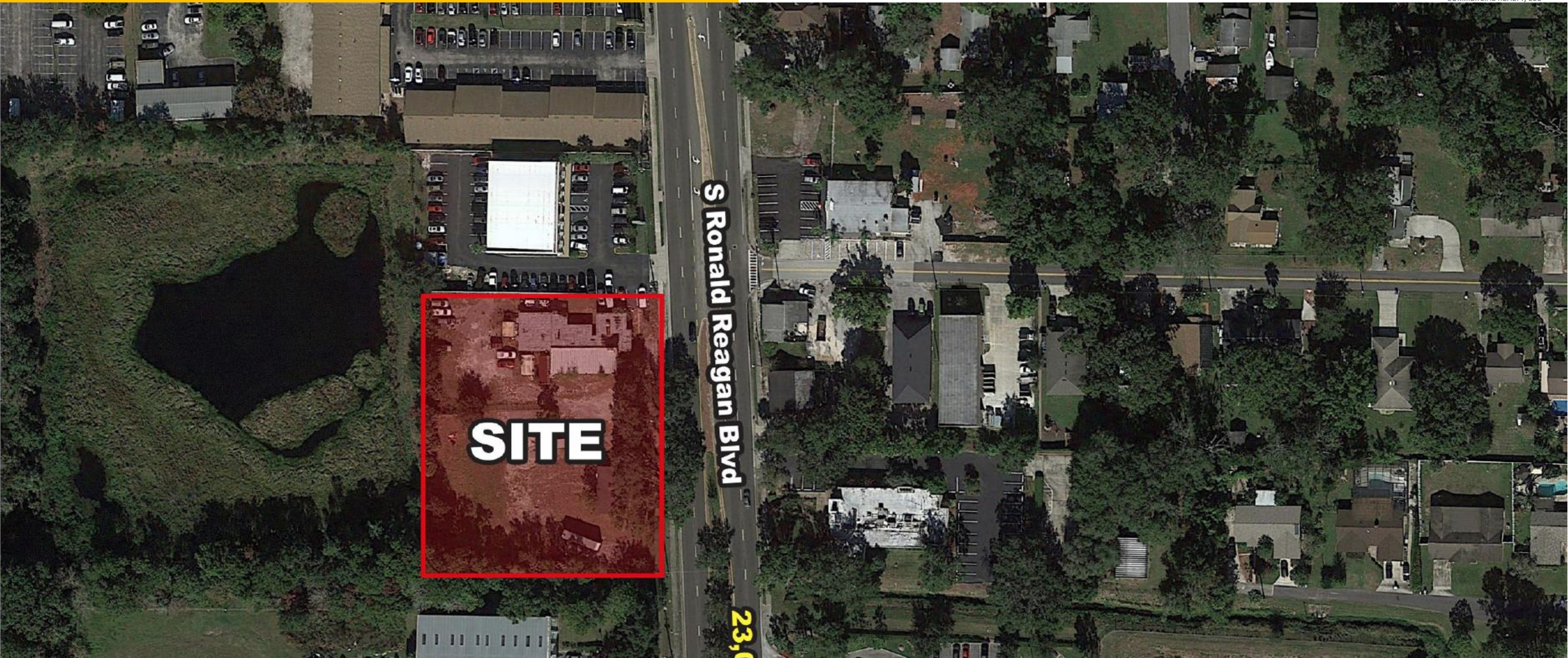
SOURCE: (Esri, 2019)

Michael R. Curtin | O: 407-476-3923 | C: 203-240-4121 | Michael.Curtin@HiveRealtors.com

All information contained herein is from sources deemed reliable; however, no presentation or warranty is made to the accuracy thereof.

REDEVELOPMENT OPPORTUNITY FOR SALE

350 S. Ronald Reagan Blvd
Longwood, FL 32750



Michael R. Curtin | O: 407-476-3923 | C: 203-240-4121 | Michael.Curtin@HiveRealtors.com

All information contained herein is from sources deemed reliable; however, no presentation or warranty is made to the accuracy thereof.

REDEVELOPMENT OPPORTUNITY FOR SALE

350 S. Ronald Reagan Blvd
Longwood, FL 32750



Michael R. Curtin | O: 407-476-3923 | C: 203-240-4121 | Michael.Curtin@HiveRealtors.com

All information contained herein is from sources deemed reliable; however, no presentation or warranty is made to the accuracy thereof.

REDEVELOPMENT OPPORTUNITY FOR SALE

350 S. Ronald Reagan Blvd
Longwood, FL 32750



POSSIBLE USAGE



SAMPLE RENDERING

