

INDUSTRIAL FOR LEASE | 13,000 SF

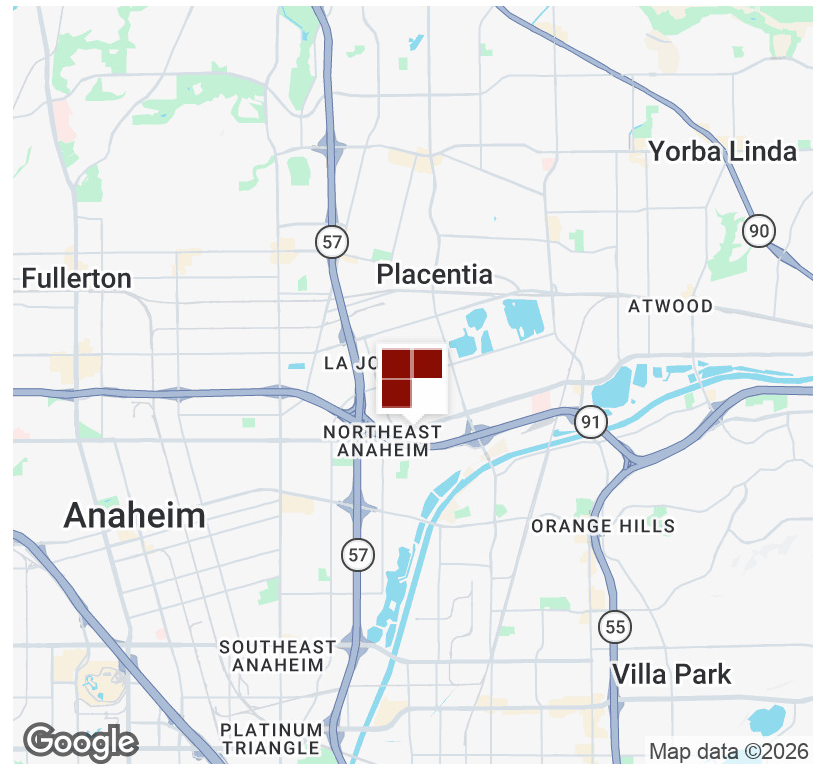
2886 EAST BLUE STAR STREET ANAHEIM, CA 92806

COMPETITIVE GROSS LEASE RATES | NO CAMS



PROPERTY HIGHLIGHTS

- Approximately 13,000 SF Unit Zoned Industrial
- 3,500 SF Office/Showroom
- Three Ground Level Doors (3) 12'x 14'
- 600 Amp, 120/240v
- 16' Minimum Clearance
- Fire Sprinklers



MATTHEW ROSSMAN
DIRECTOR OF MARKETING
714.783.2107
CA DRE #01794680
matt@bryanindprop.com

BRYAN INDUSTRIAL PROPERTIES
146 E. ORANGETHORPE AVENUE
ANAHEIM, CA 92801
BRYANINDPROP.COM
CA DRE #00002442



The information contained herein has been obtained from sources we deem reliable. However, no warranties or representations, expressed or implied, are made as to the accuracy of any information contained herein, and the information is subject to errors and omissions. This information is also subject to price, rental or other conditions, withdrawal without notice, and to any special listing conditions by our principals.

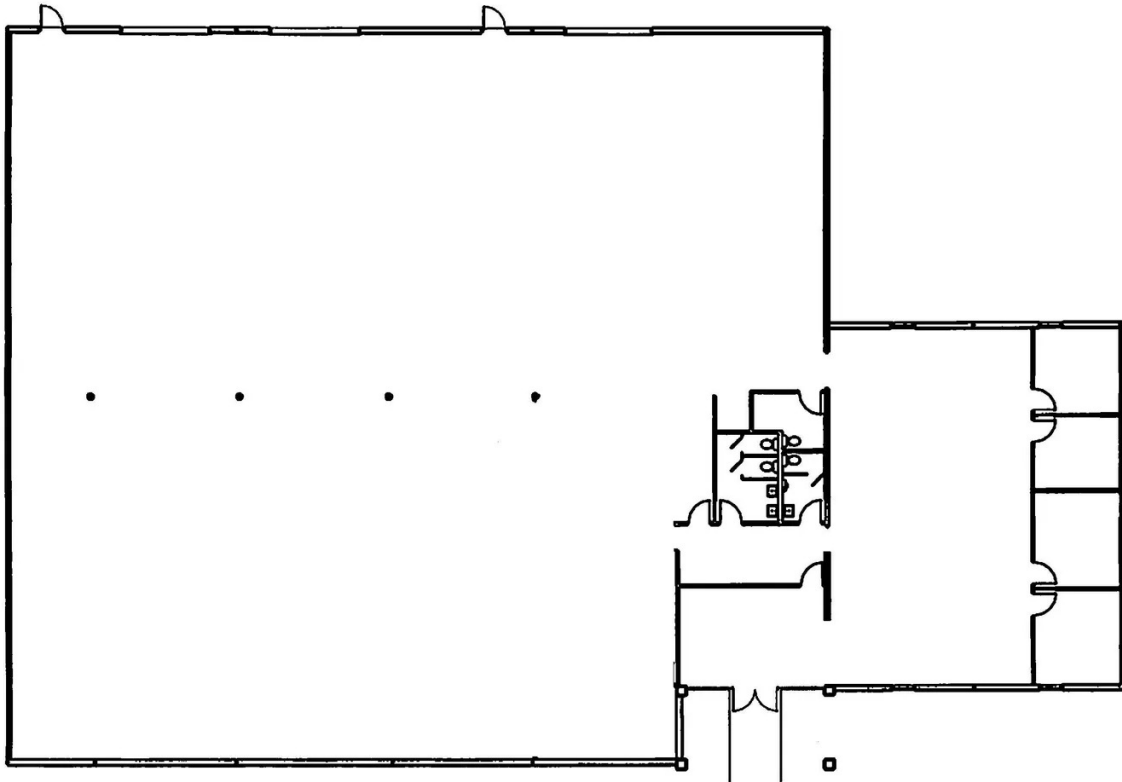
INDUSTRIAL FOR LEASE | 13,000 SF

2886 EAST BLUE STAR STREET ANAHEIM, CA 92806

FLOOR PLAN



2886 EAST BLUE STAR STREET
ANAHEIM, CA 92806



MATTHEW ROSSMAN
DIRECTOR OF MARKETING
714.783.2107
CA DRE #01794680
matt@bryanindprop.com

BRYAN INDUSTRIAL PROPERTIES
146 E. ORANGETHORPE AVENUE
ANAHEIM, CA 92801
BRYANINDPROP.COM
CA DRE #00002442



The information contained herein has been obtained from sources we deem reliable. However, no warranties or representations, expressed or implied, are made as to the accuracy of any information contained herein, and the information is subject to errors and omissions. This information is also subject to price, rental or other conditions, withdrawal without notice, and to any special listing conditions by our principals.