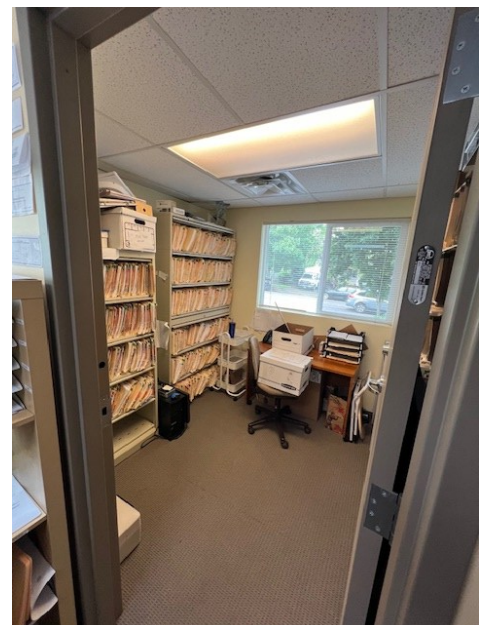


Additional Photos

2326 NW LOVEJOY STREET, PORTLAND, OR 97210



STEVE HAGAN

Director
Licensed in Oregon
C: 503.490.4152
O: 503.222.5100
shagan@dougbean.com

Doug Bean & Associates, Inc. | 1200 NW Naito Parkway #180 | Portland, OR 97209

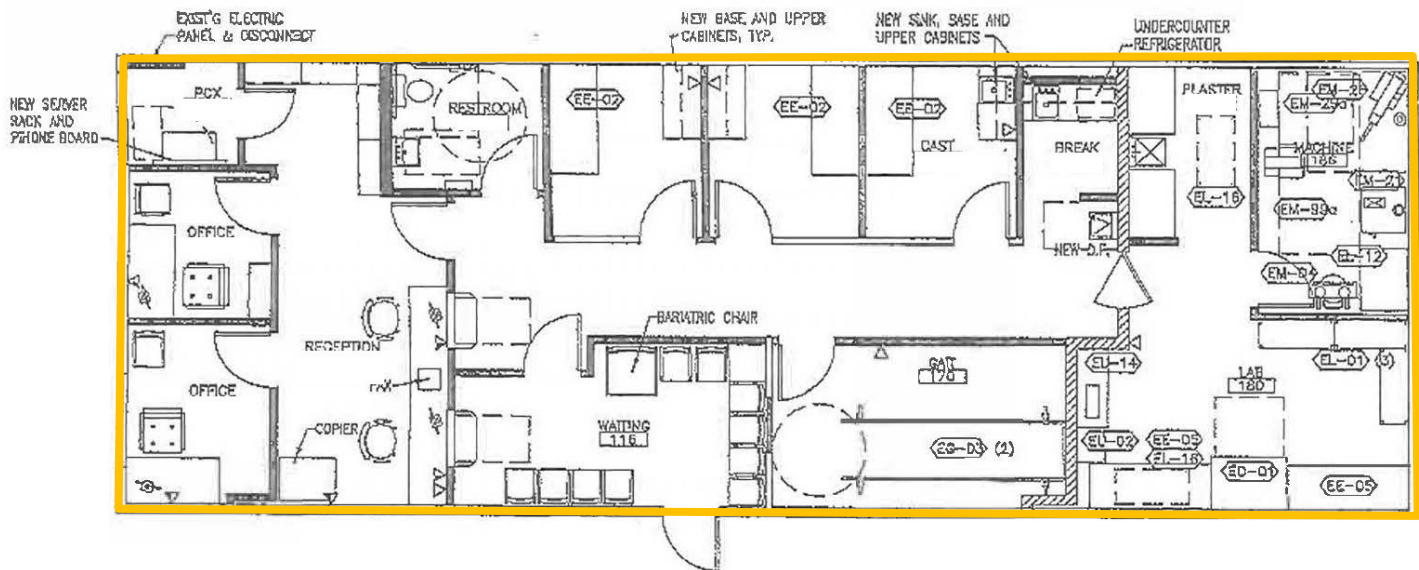
DOUGBEAN.COM

Information contained herein has been obtained from others and is considered to be reliable. However, a prospective purchaser or lessee is expected to verify all information to their own satisfaction



1,852 RSF (+/-)

2326 NW LOVEJOY STREET, PORTLAND, OR 97210



STEVE HAGAN

Director
Licensed in Oregon
C: 503.490.4152
O: 503.222.5100
shagan@dougbear.com

Doug Bean & Associates, Inc. | 1200 NW Naito Parkway #180 | Portland, OR 97209

DOUGBEAN.COM

Information contained herein has been obtained from others and is considered to be reliable. However, a prospective purchaser or lessee is expected to verify all information to their own satisfaction



Map

2326 NW LOVEJOY STREET, PORTLAND, OR 97210



In the heart of the
Nob Hill / West End District



Walk Score® 96
Walker's Paradise



Excellent Transit Access
Streetcar & Bus Lines Nearby

STEVE HAGAN

Director
Licensed in Oregon
C: 503.490.4152
O: 503.222.5100
shagan@dougbear.com

Doug Bean & Associates, Inc. | 1200 NW Naito Parkway #180 | Portland, OR 97209

DOUGBEAN.COM

Information contained herein has been obtained from others and is considered to be reliable. However, a prospective purchaser or lessee is expected to verify all information to their own satisfaction

