



# 1231 S PARKER RD

DENVER, CO 80231

1,205 SF | OFFICE / MEDICAL CONDO

Professional Space in a Prime Denver Location

PRICE RECENTLY REDUCED  
TO \$313,000



Move-in ready space ideal for your business.



### DESIGNED FOR PROFESSIONALS

Functional layout with 3 private rooms, reception area, and open space.



### RECENTLY REMODELED

Modern finishes and a professional atmosphere throughout.



### GROUND-LEVEL ACCESS

No stairs—easy access for clients and staff.



### AMPLE PARKING

Convenient on-site parking for you and your clients.



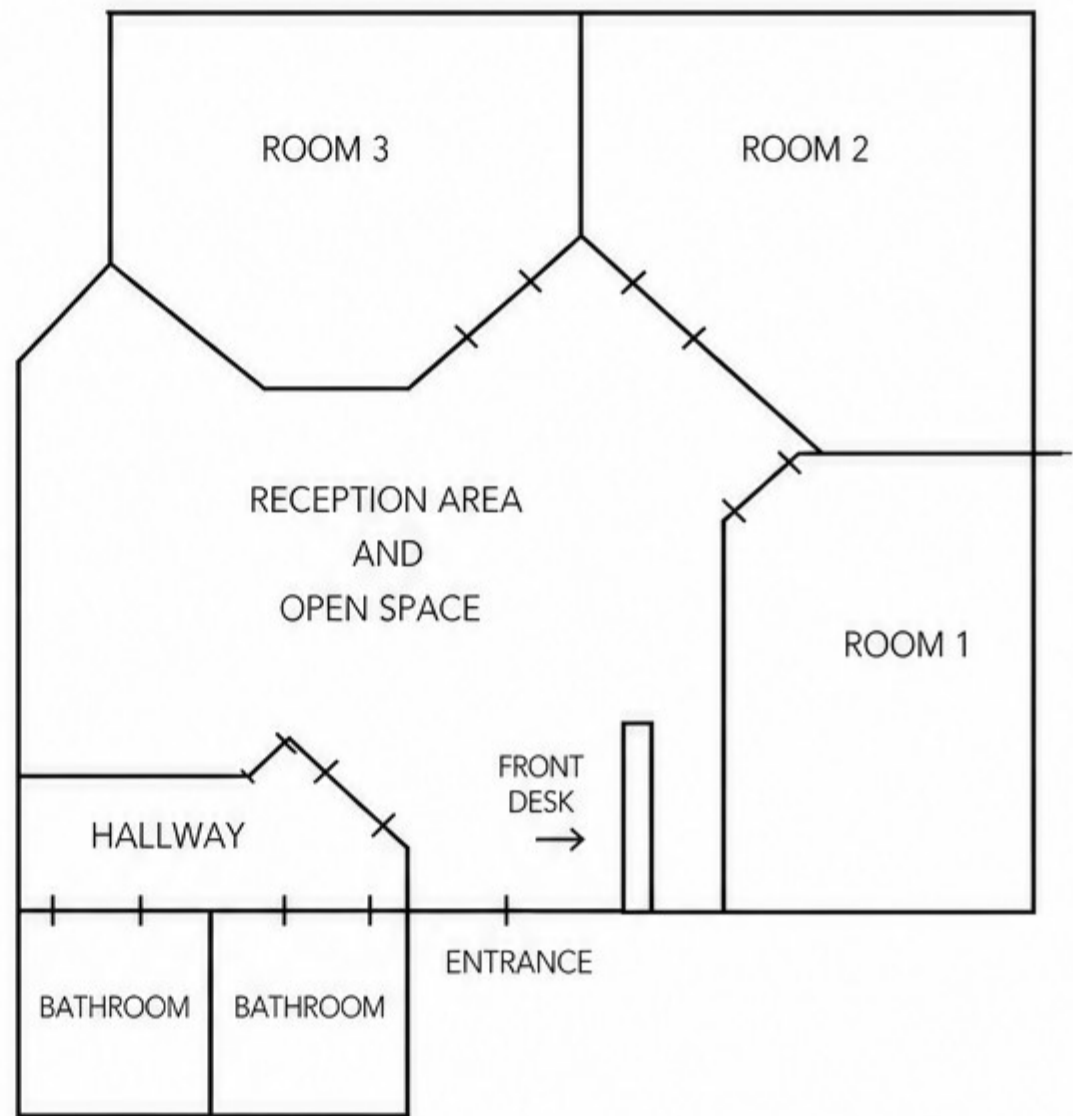
### PRIME LOCATION

High visibility and easy access near Parker Rd & Leetsdale Dr.



### FLEXIBLE USE

Ideal for medical, legal, therapy, accounting, and other professional services.



### PERFECT FOR YOUR BUSINESS

This versatile office/medical condo offers the ideal environment for professionals who value convenience, accessibility, and a welcoming space for clients.

### IDEAL FOR:

- Medical & Wellness Practices
- Law Offices
- Therapy / Counseling
- Accounting & Financial Services
- Consulting & More



TURN-KEY SPACE.  
GREAT LOCATION.  
ENDLESS POSSIBILITIES.  
YOUR BUSINESS BELONGS HERE.



SCHEDULE A SHOWING TODAY!

This opportunity won't last long.



KRISTINE NGUYEN

(720) 227-3978 office

